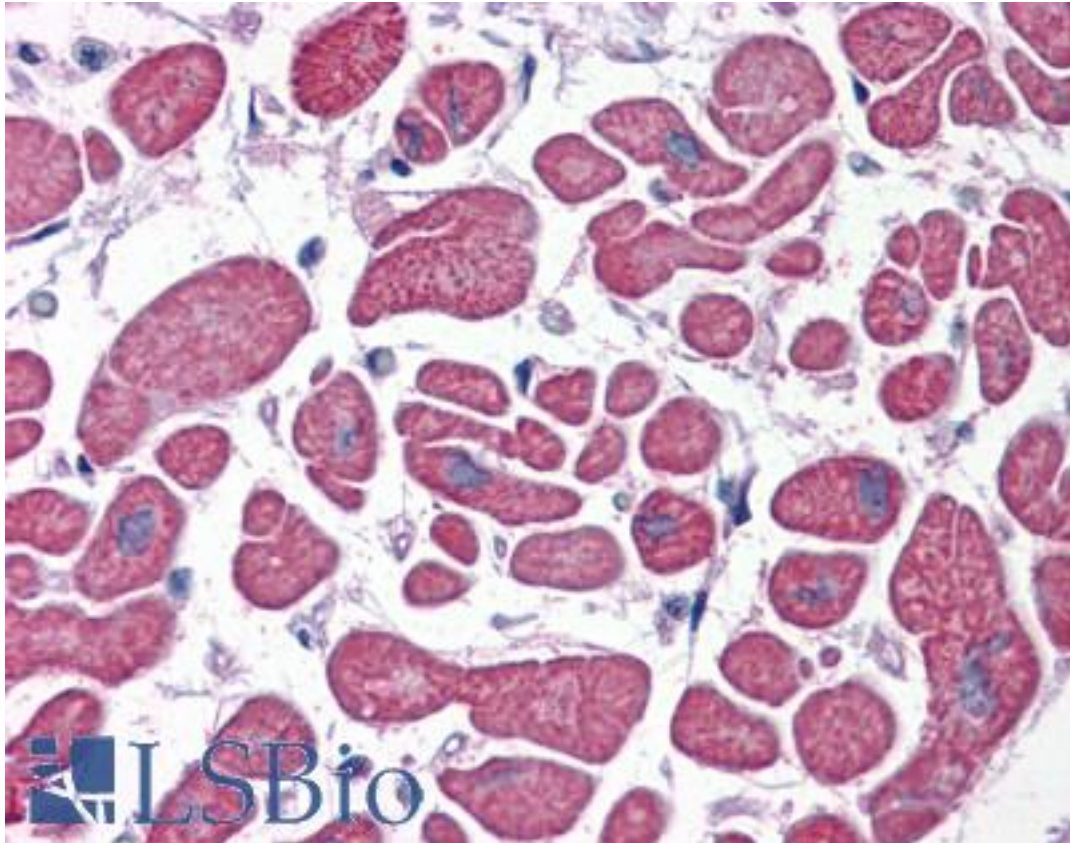


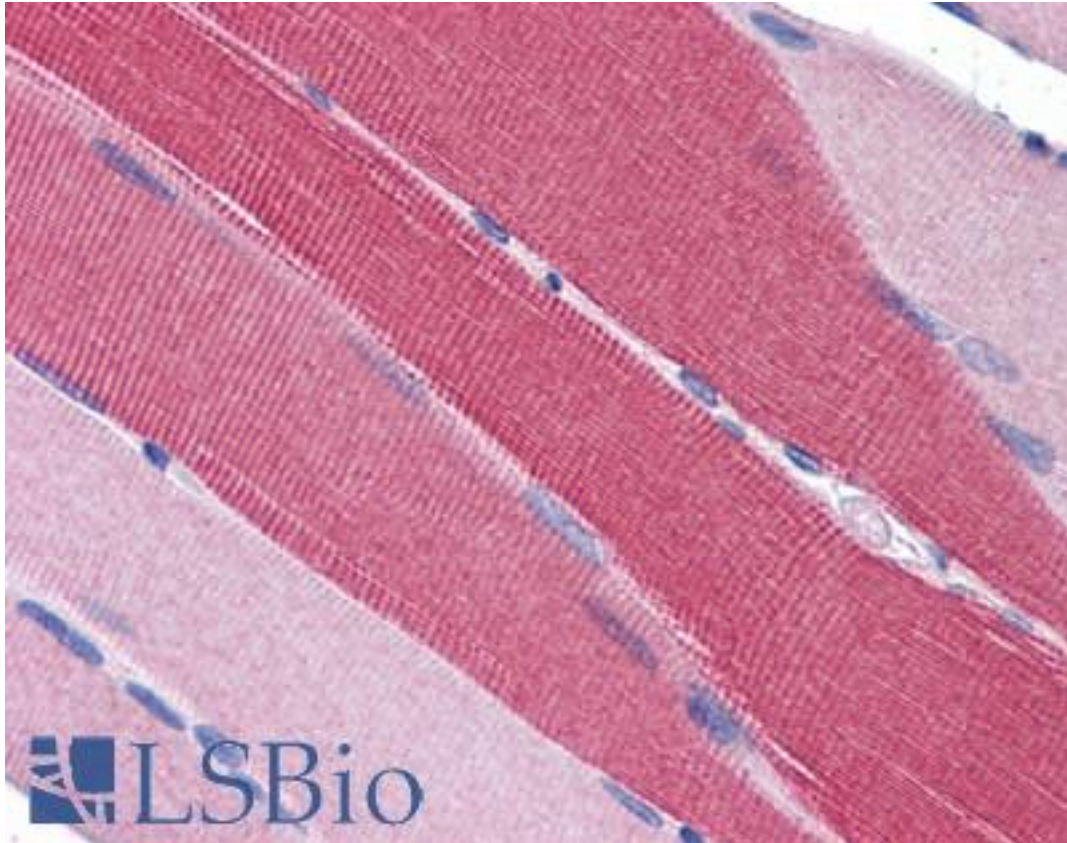
PDE4D Goat anti-Human Polyclonal (C-Terminus) Antibody - LS-B3940 - LSBio	
CatalogID:	LS-B3940
Validation:	This antibody replaces catalog number LS-C55250. It has been validated for use in the following assays: IHC-P.
Target:	phosphodiesterase 4D, cAMP-specific (PDE4D)
Synonyms:	PDE4D Antibody, ACRDYS2 Antibody, DPDE3 Antibody, HSPDE4D Antibody, PDE43 Antibody, Pde-ivd Antibody, PDE4DN2 Antibody, Phosphodiesterase 4d Antibody, STRK1 Antibody
Family / Subfamily:	Phosphodiesterase / PDE - cAMP-specific
Host	PDE4D antibody was produced in Goat
Clonality:	Polyclonal
Immunogen Species:	PDE4D antibody was raised against Human
Antigen Type:	Synthetic peptide
Immunogen:	PDE4D antibody was raised against synthetic peptide QPEACVIDDRSPDT from the C-terminus of human PDE4D (NP_001184151.1; NP_001184150.1; NP_006194.2; NP_001098101.1; NP_001184152.1; NP_001159371.1). Percent identity by BLAST analysis: Human, Gorilla, Gibbon, Marmoset (100%); Monkey, Bat, Rabbit (93%); Bovine (86%).
Specificity:	Human PDE4D. This antibody is expected to recognize all reported isoforms.
Epitope:	C-Terminus
Reactivity:	Human, Gorilla, Gibbon
Predicted Reactivity:	Monkey, Bat, Rabbit
Purification:	Immunoaffinity purified
Presentation:	Tris-buffered saline, pH 7.3, 0.5% BSA, 0.02% sodium azide
Recommended Storage:	Store at -20°C. Minimize freezing and thawing.
Uses:	IHC - Paraffin (5 µg/ml), Western blot (0.1 - 1 µg/ml), ELISA (1:128000) (Optimal dilution to be determined by the researcher)
Size:	50 µg
Concentration:	0.5 mg/ml

Immunohistochemistry Image:



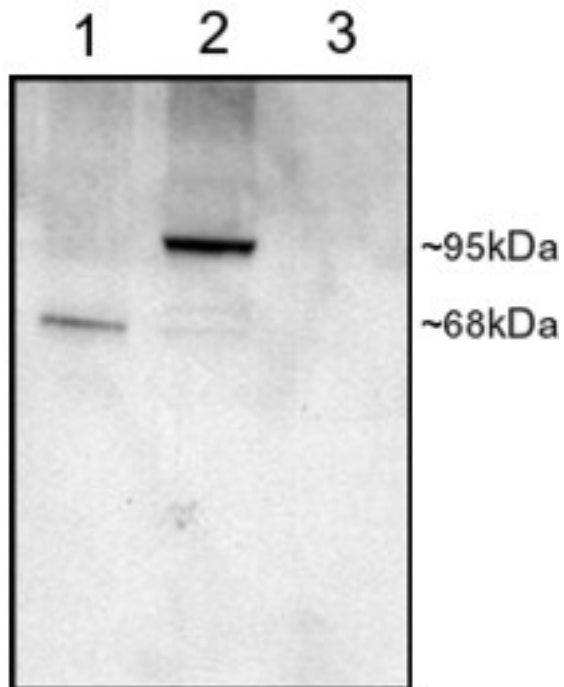
Anti-PDE4D antibody IHC of human heart. Immunohistochemistry of formalin-fixed, paraffin-embedded tissue after heat-induced antigen retrieval. Antibody LS-B3940 concentration 5 ug/ml.

Immunohistochemistry Image:



Anti-PDE4D antibody IHC of human skeletal muscle. Immunohistochemistry of formalin-fixed, paraffin-embedded tissue after heat-induced antigen retrieval. Antibody LS-B3940 concentration 5 ug/ml.

Western Blot Image:



Antibody staining (1 ug/ml) of COS cell lysates (25 ug protein): transfected with Human PDE4D1 (1), transfected with Human PDE4D3 (2), untransfected (3). Primary incubation was 1 hour. Detected by chemiluminescence.

Requested From:

Japan

Laboratory Reagent For In Vitro Research Use Only

Not for resale without prior written consent from LifeSpan BioSciences, Inc.

Created on 9/23/2014

© 2014 LifeSpan BioSciences