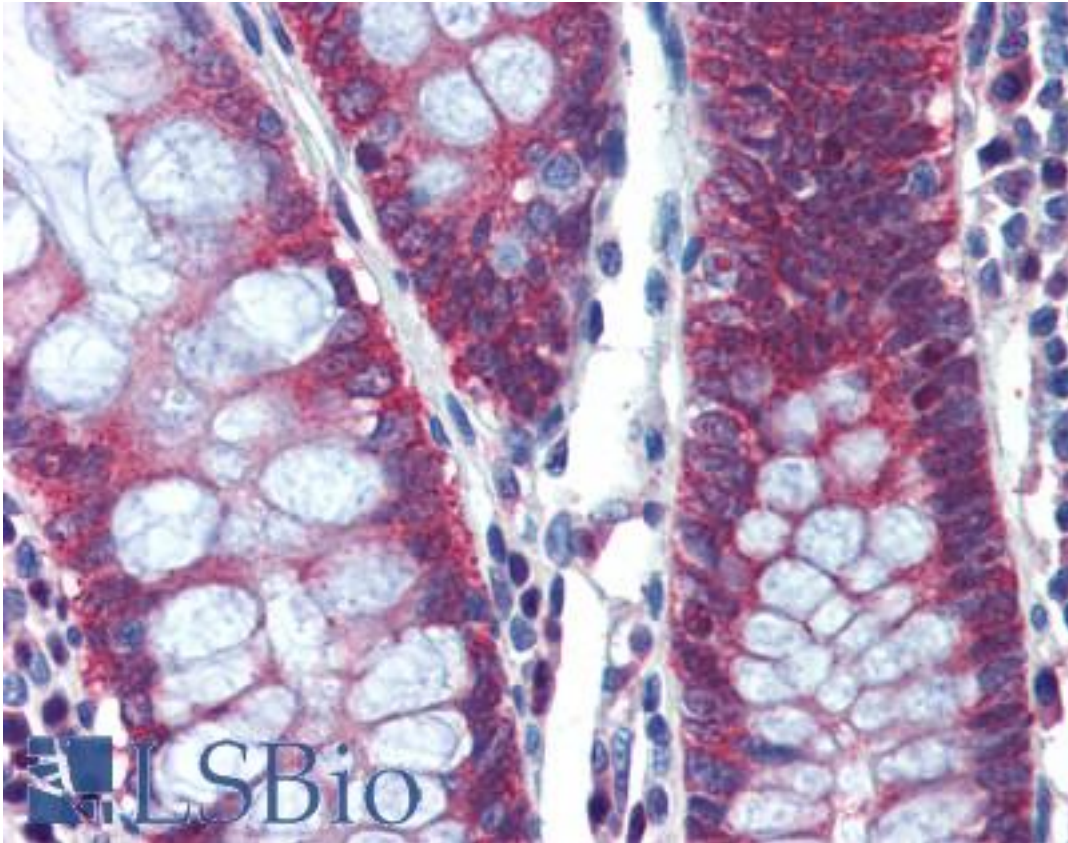


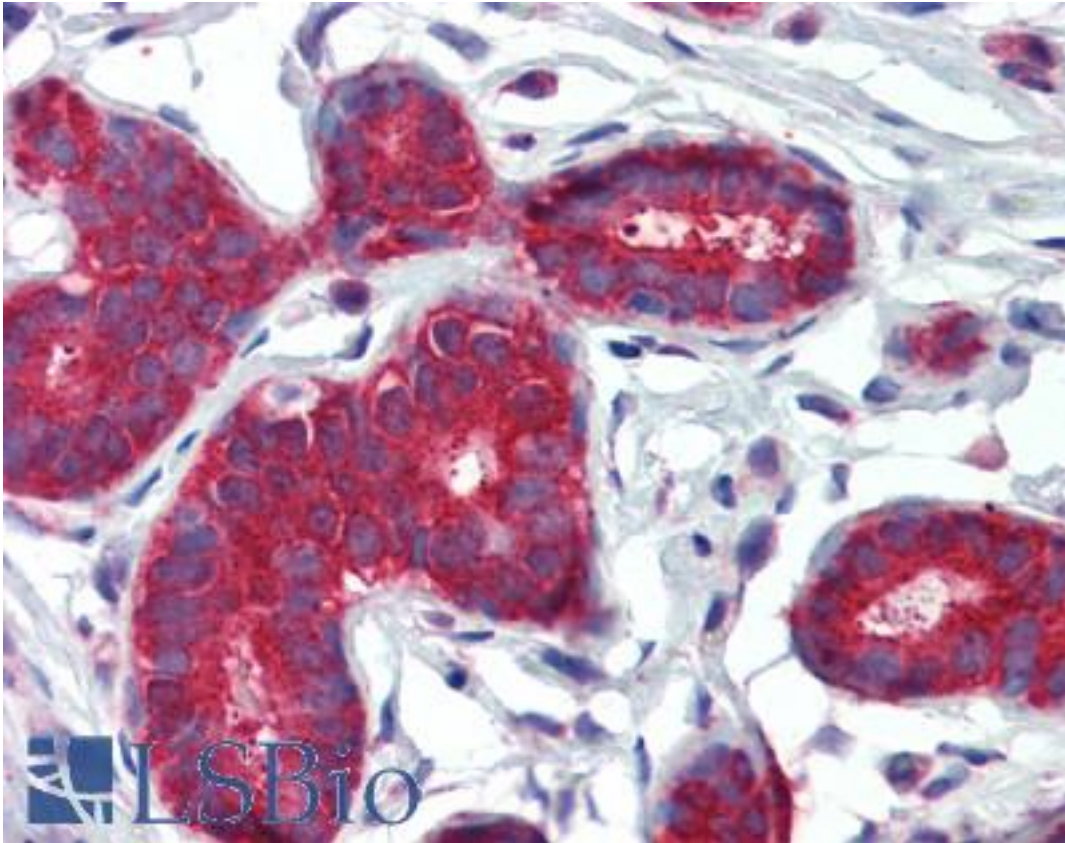
PTCH1 / Patched Goat anti-Human Polyclonal (C-Terminus) Antibody - LS-B3939 - LSBio	
CatalogID:	LS-B3939
Validation:	This antibody replaces catalog number LS-C55338. It has been validated for use in the following assays: IHC-P.
Target:	patched 1 (PTCH1)
Synonyms:	PTCH1 Antibody, NBCCS Antibody, Patched 1 Antibody, Patched homolog 1 Antibody, Protein patched homolog 1 Antibody, PTC1 Antibody, PTCH Antibody, PTCH protein +12b Antibody, PTCH protein -10 Antibody, PTCH protein -3,4,5 Antibody, Patched Antibody, Patched protein homolog 1 Antibody, BCNS Antibody, HPE7 Antibody, Patched homolog Antibody, PTC Antibody, PTCH protein +4 Antibody, PTCH11 Antibody
Host	PTCH1 antibody was produced in Goat
Clonality:	Polyclonal
Immunogen Species:	PTCH1 / Patched antibody was raised against Human
Antigen Type:	Synthetic peptide
Immunogen:	PTCH1 / Patched antibody was raised against synthetic peptide ELQDVECEERPR from the C-terminus of human PTCH1 (NP_000255.1; NP_001077072.1; NP_001077071.1; NP_001077073.1; NP_001077074.1; NP_001077075.1; NP_001077076.1). Percent identity by BLAST analysis: Human, Gorilla, Monkey, Marmoset, Elephant, Panda, Dog, Bat, Horse (100%); Gibbon, Mouse, Rat, Rabbit, Opossum, Lizard (92%); Hamster, Bovine, Chicken, Xenopus (83%).
Specificity:	Human PTCH1. This antibody is expected to recognise all reported isoforms. Variants (NP_001077073.1; NP_001077074.1; NP_001077075.1; NP_001077076.1) encode the same isoform.
Epitope:	C-Terminus
Reactivity:	Human, Gorilla, Monkey, Bat, Dog, Horse
Predicted Reactivity:	Gibbon, Mouse, Rat, Rabbit
Purification:	Immunoaffinity purified
Presentation:	Tris-buffered saline, pH 7.3, 0.5% BSA, 0.02% sodium azide
Recommended Storage:	Store at -20°C. Minimize freezing and thawing.
Uses:	IHC - Paraffin (3.75 µg/ml), ELISA (1:8000) (Optimal dilution to be determined by the researcher)
Size:	50 µg
Concentration:	0.5 mg/ml

Immunohistochemistry Image:



Anti-PTCH1 antibody IHC of human colon. Immunohistochemistry of formalin-fixed, paraffin-embedded tissue after heat-induced antigen retrieval. Antibody LS-B3939 concentration 3.75 ug/ml.

Immunohistochemistry Image:



Anti-PTCH1 antibody IHC of human breast. Immunohistochemistry of formalin-fixed, paraffin-embedded tissue after heat-induced antigen retrieval. Antibody LS-B3939 concentration 3.75 ug/ml.

Requested From:

Japan

Laboratory Reagent For In Vitro Research Use Only

Not for resale without prior written consent from LifeSpan BioSciences, Inc.

Created on 9/23/2014

© 2014 LifeSpan BioSciences