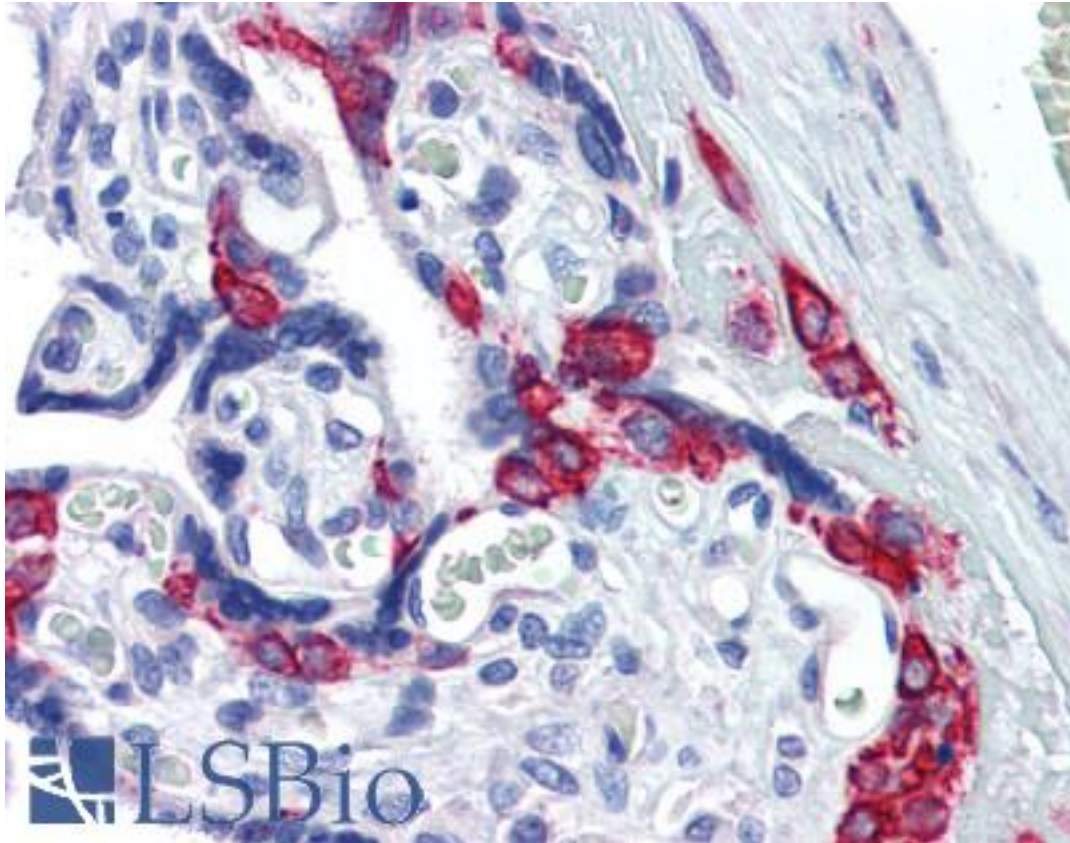


**SERPINE1 / PAI-1 Goat anti-Human Polyclonal (Internal) Antibody - LS-B3936 - LSBio**

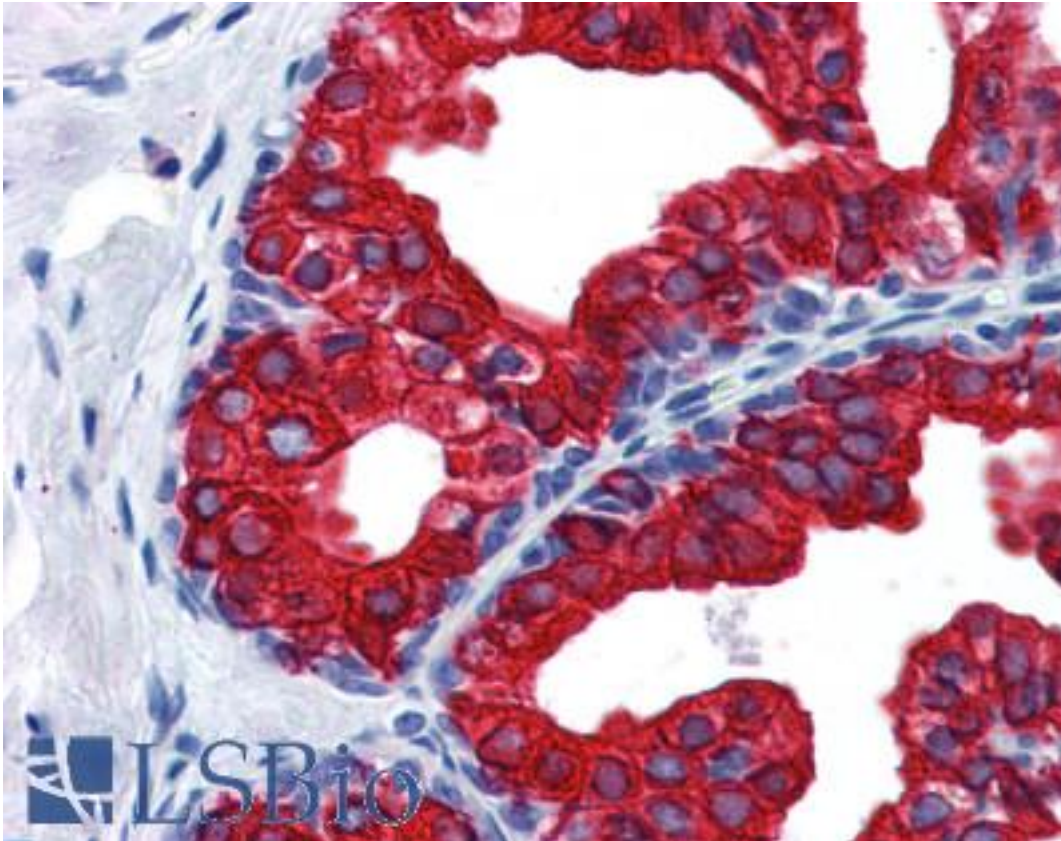
<b>CatalogID:</b>	LS-B3936
<b>Validation:</b>	This antibody replaces catalog number LS-C20187. It has been validated for use in the following assays: IHC-P.
<b>Target:</b>	serpin peptidase inhibitor, clade E (nexin, plasminogen activator inhibitor type 1), member 1 (SERPINE1)
<b>Synonyms:</b>	SERPINE1 Antibody, PAI1 Antibody, PLANH1 Antibody, PAI-1 Antibody, Serpin E1 Antibody
<b>Family / Subfamily:</b>	Serine Protease Inhibitor
<b>Host</b>	SERPINE1 antibody was produced in Goat
<b>Clonality:</b>	Polyclonal
<b>Immunogen Species:</b>	SERPINE1 / PAI-1 antibody was raised against Human
<b>Antigen Type:</b>	Synthetic peptide
<b>Immunogen:</b>	SERPINE1 / PAI-1 antibody was raised against synthetic peptide C-GFKIDDKGMALRH from an internal region of human SERPINE1 / PAI-1 (NP_000593.1; NP_001158885.1). Percent identity by BLAST analysis: Human, Gorilla, Monkey (100%); Gibbon, Marmoset (93%); Elephant, Horse (80%).
<b>Specificity:</b>	Human SERPINE1 / PAI-1. This antibody is expected to recognise both reported isoforms.
<b>Epitope:</b>	Internal
<b>Reactivity:</b>	Human, Gorilla
<b>Predicted Reactivity:</b>	Gibbon, Monkey
<b>Purification:</b>	Immunoaffinity purified
<b>Presentation:</b>	Tris-buffered saline, pH 7.3, 0.5% BSA, 0.02% sodium azide
<b>Recommended Storage:</b>	Store at -20°C. Minimize freezing and thawing.
<b>Uses:</b>	IHC - Paraffin (2.5 µg/ml), Western blot (0.1 - 0.3 µg/ml), ELISA (1:32000) (Optimal dilution to be determined by the researcher)
<b>Size:</b>	50 µg
<b>Concentration:</b>	0.5 mg/ml

**Immunohistochemistry Image:**



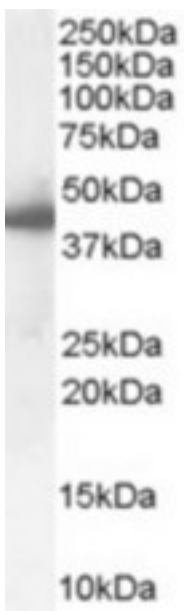
Anti-SERPINE1 / PAI-1 antibody IHC of human placenta. Immunohistochemistry of formalin-fixed, paraffin-embedded tissue after heat-induced antigen retrieval. Antibody LS-B3936 concentration 2.5 ug/ml.

**Immunohistochemistry Image:**



Anti-SERPINE1 / PAI-1 antibody IHC of human prostate. Immunohistochemistry of formalin-fixed, paraffin-embedded tissue after heat-induced antigen retrieval. Antibody LS-B3936 concentration 2.5 ug/ml.

**Western Blot Image:**



(0.1 ug/ml) staining of Human Liver lysate (35 ug protein in RIPA buffer). Primary incubation was 1 hour. Detected by chemiluminescence.

<b>Requested From:</b>	Japan
Laboratory Reagent For In Vitro Research Use Only	
Not for resale without prior written consent from LifeSpan BioSciences, Inc.	
Created on 9/23/2014	
© 2014 LifeSpan BioSciences	