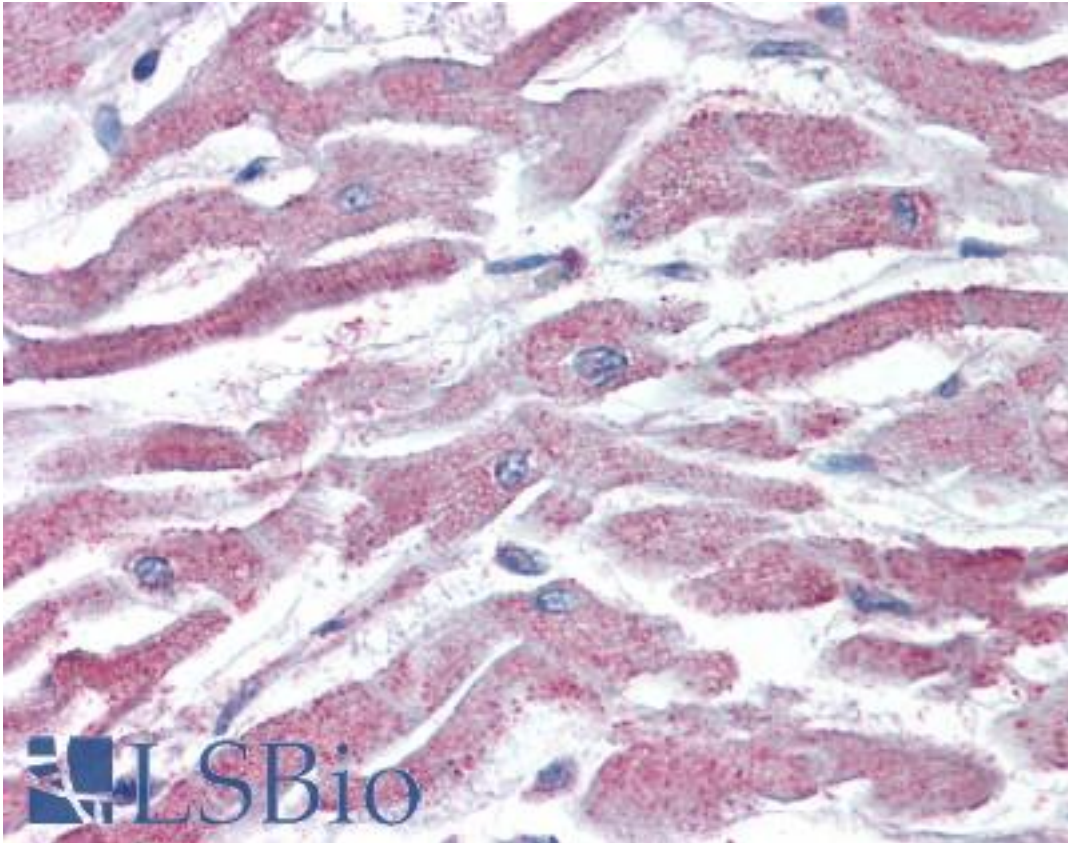


AKT3 Goat anti-Human Polyclonal (Internal) Antibody - LS-B3935 - LSBio

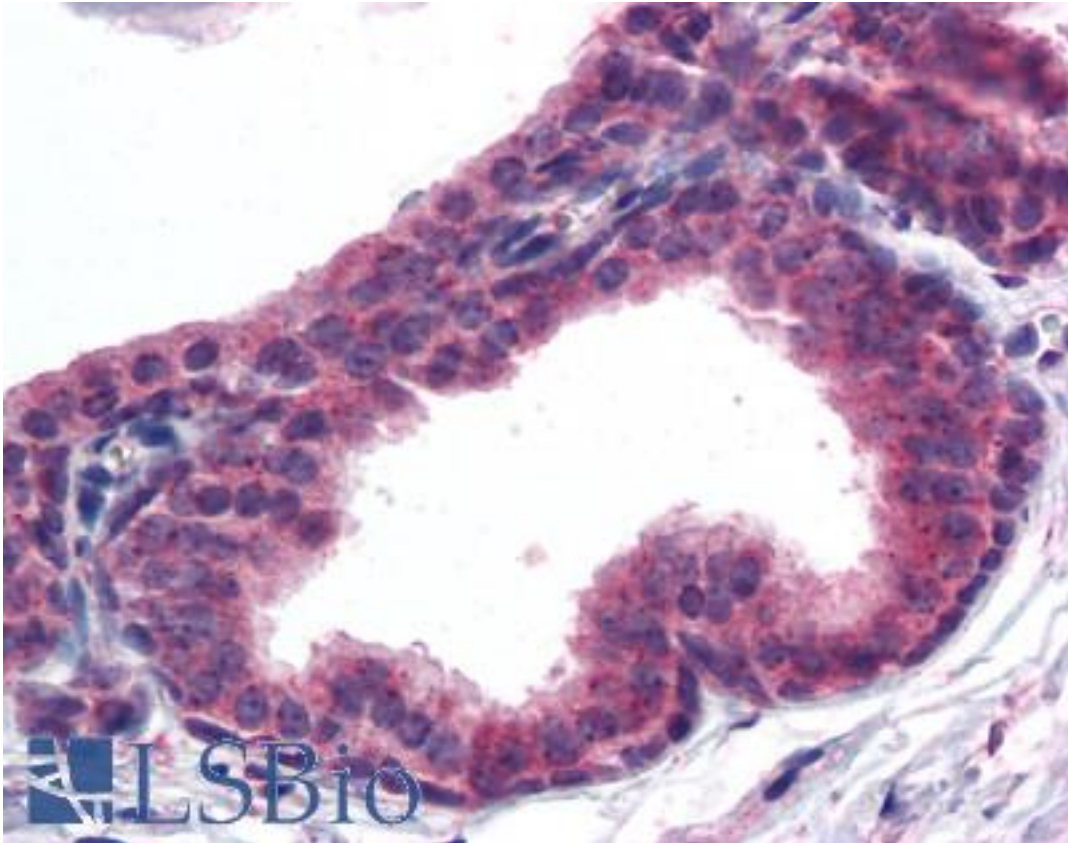
CatalogID:	LS-B3935
Validation:	This antibody replaces catalog number LS-C20121. It has been validated for use in the following assays: IHC-P.
Target:	v-akt murine thymoma viral oncogene homolog 3 (AKT3)
Synonyms:	AKT3 Antibody, AKT3/PKBgamma Antibody, PRKBG Antibody, PKB gamma Antibody, Protein kinase Akt-3 Antibody, RAC-gamma Antibody, MPPH Antibody, PKB-GAMMA Antibody, PKBG Antibody, Protein kinase B gamma Antibody, RAC-PK-gamma Antibody, STK-2 Antibody
Family / Subfamily:	Protein Kinase / RAC/AKT
Host	AKT3 antibody was produced in Goat
Clonality:	Polyclonal
Immunogen Species:	AKT3 antibody was raised against Human
Antigen Type:	Synthetic peptide
Immunogen:	AKT3 antibody was raised against synthetic peptide CSPTSQIDNIGEEEM from an internal region of human AKT3 (NP_005456.1; NP_859029.1). Percent identity by BLAST analysis: Human, Gorilla, Gibbon, Monkey, Marmoset, Mouse, Rat, Elephant, Panda, Bovine, Dog, Bat, Horse, Rabbit, Pig, Opossum, Turkey, Chicken, Platypus (100%); Hamster, Zebrafish (93%); Stickleback (80%).
Specificity:	Human AKT3. This antibody is expected to recognise an epitope corresponding to aa 119-133 of both isoforms of human AKT3 protein. This antibody does not cross-react with human AKT1/2. Reported variants represent identical protein (NP_859029.1; NP_001193658.1).
Epitope:	Internal
Reactivity:	Human, Gorilla, Gibbon, Monkey, Mouse, Rat, Bat, Bovine, Dog, Horse, Pig, Rabbit, Chicken
Predicted Reactivity:	Hamster, Zebrafish
Purification:	Immunoaffinity purified
Presentation:	Tris-buffered saline, pH 7.3, 0.5% BSA, 0.02% sodium azide
Recommended Storage:	Store at -20°C. Minimize freezing and thawing.
Uses:	IHC - Paraffin (5 µg/ml), Western blot (1 - 3 µg/ml), ELISA (1:16000) (Optimal dilution to be determined by the researcher)
Size:	50 µg
Concentration:	0.5 mg/ml

Immunohistochemistry Image:



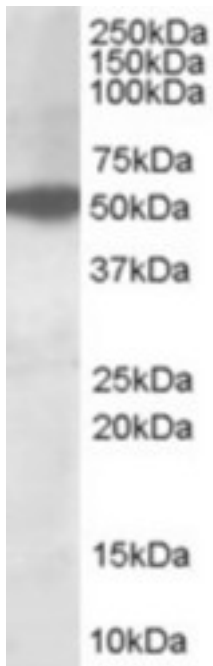
Anti-AKT3 antibody IHC of human heart. Immunohistochemistry of formalin-fixed, paraffin-embedded tissue after heat-induced antigen retrieval. Antibody LS-B3935 concentration 5 ug/ml.

Immunohistochemistry Image:



Anti-AKT3 antibody IHC of human prostate. Immunohistochemistry of formalin-fixed, paraffin-embedded tissue after heat-induced antigen retrieval. Antibody LS-B3935 concentration 5 ug/ml.

Western Blot Image:



Staining (1 ug/ml) of HepG2 lysate (35 ug protein in RIPA buffer). Primary incubation was 1 hour. Detected by chemiluminescence.

Requested From:

Japan

Laboratory Reagent For In Vitro Research Use Only

Not for resale without prior written consent from LifeSpan BioSciences, Inc.

Created on 9/23/2014

© 2014 LifeSpan BioSciences