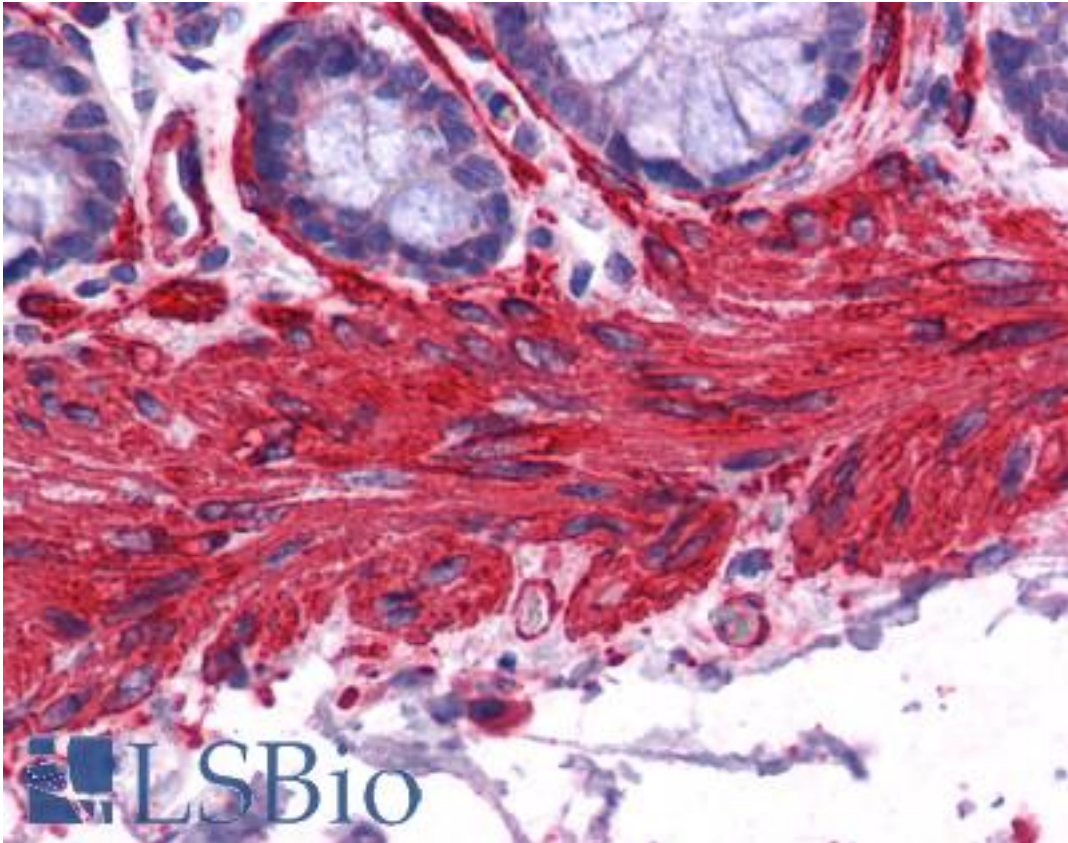


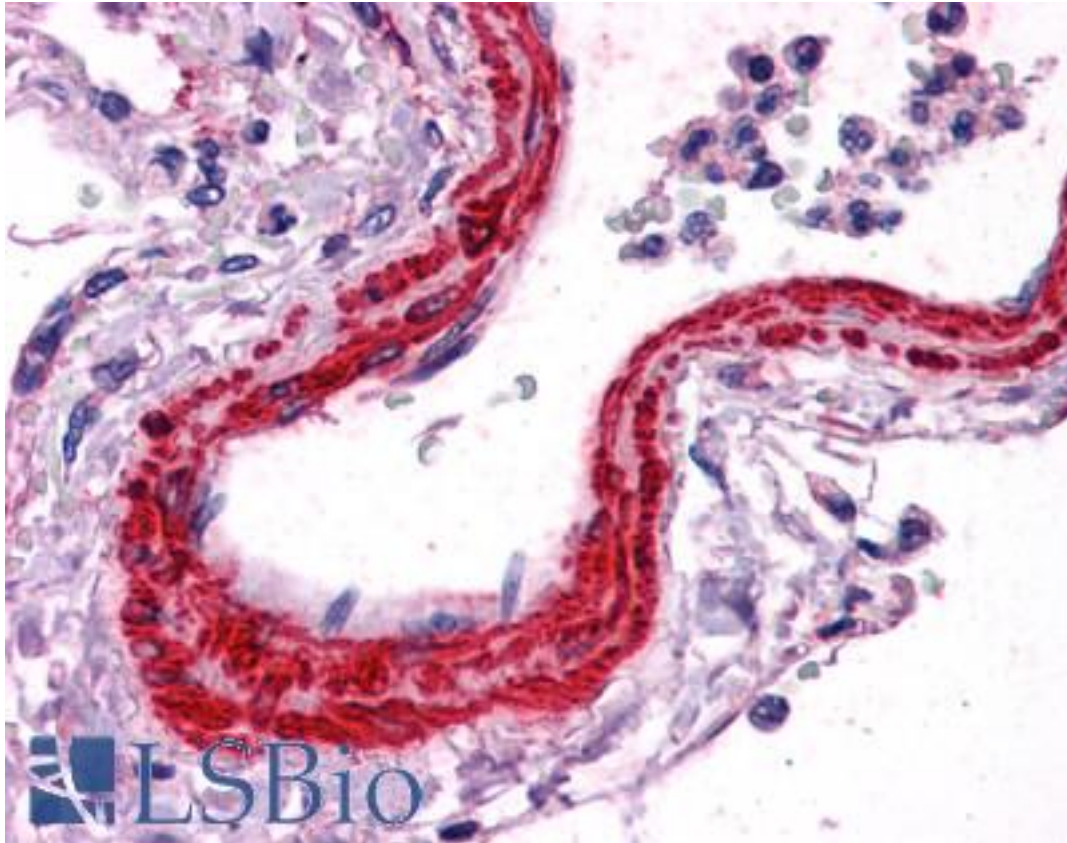
| ACTA2 / Smooth Muscle Actin Goat anti-Human Polyclonal (N-Terminus) Antibody - LS-B3933 - LSBio | |
|---|--|
| CatalogID: | LS-B3933 |
| Validation: | This antibody replaces catalog number LS-C54442. It has been validated for use in the following assays: IHC-P. |
| Target: | actin, alpha 2, smooth muscle, aorta (ACTA2) |
| Synonyms: | ACTA2 Antibody, ACTVS Antibody, Alpha-actin-2 Antibody, Alpha-cardiac actin Antibody, AAT6 Antibody, Actin, aortic smooth muscle Antibody, ACTSA Antibody, Smooth Muscle Actin Antibody, MYMY5 Antibody |
| Host | ACTA2 antibody was produced in Goat |
| Clonality: | Polyclonal |
| Immunogen Species: | ACTA2 / Smooth Muscle Actin antibody was raised against Human |
| Antigen Type: | Synthetic peptide |
| Immunogen: | ACTA2 / Smooth Muscle Actin antibody was raised against synthetic peptide EEEDSTALVC from the N-terminus of human ACTA2 (NP_001604.1; NP_001135417.1). Percent identity by BLAST analysis: Human, Gorilla, Orangutan, Gibbon, Monkey, Marmoset, Mouse, Rat, Hamster, Elephant, Panda, Dog, Bat, Bovine, Horse, Rabbit, Pig, Turkey, Chicken, Platypus (100%); Xenopus, Seq squirt, Phytophthora, Tunicate, Shewanella (80%). |
| Specificity: | Human ACTA2. Variants NP_001604.1 and NP_001135417.1 encode the same protein. |
| Epitope: | N-Terminus |
| Reactivity: | Human, Gorilla, Orangutan, Gibbon, Monkey, Mouse, Rat, Bat, Bovine, Dog, Hamster, Horse, Pig, Rabbit, Chicken |
| Purification: | Immunoaffinity purified |
| Presentation: | Tris-buffered saline, pH 7.3, 0.5% BSA, 0.02% sodium azide |
| Recommended Storage: | Store at -20°C. Minimize freezing and thawing. |
| Uses: | IHC - Paraffin (2.5 µg/ml), Western blot (0.3 - 1 µg/ml), ELISA (1:4000) (Optimal dilution to be determined by the researcher) |
| Size: | 50 µg |
| Concentration: | 0.5 mg/ml |

Immunohistochemistry Image:



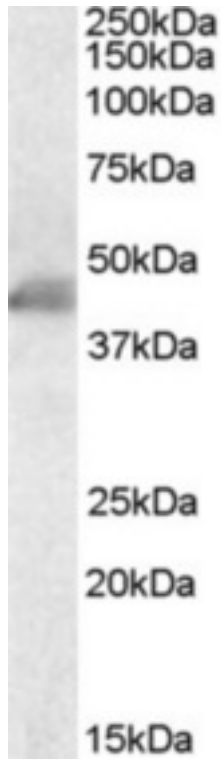
Anti-ACTA2 antibody IHC of human colon, smooth muscle. Immunohistochemistry of formalin-fixed, paraffin-embedded tissue after heat-induced antigen retrieval. Antibody LS-B3933 concentration 2.5 ug/ml.

Immunohistochemistry Image:



Anti-ACTA2 antibody IHC of human vessel. Immunohistochemistry of formalin-fixed, paraffin-embedded tissue after heat-induced antigen retrieval. Antibody LS-B3933 concentration 2.5 ug/ml.

Western Blot Image:



Antibody staining (0.1 ug/ml) of Human Duodenum lysate (RIPA buffer, 35 ug total protein per lane). Primary incubated for 1 hour. Detected by Western blot of chemiluminescence.

Requested From:

Japan

Laboratory Reagent For In Vitro Research Use Only

Not for resale without prior written consent from LifeSpan BioSciences, Inc.

Created on 9/23/2014

© 2014 LifeSpan BioSciences