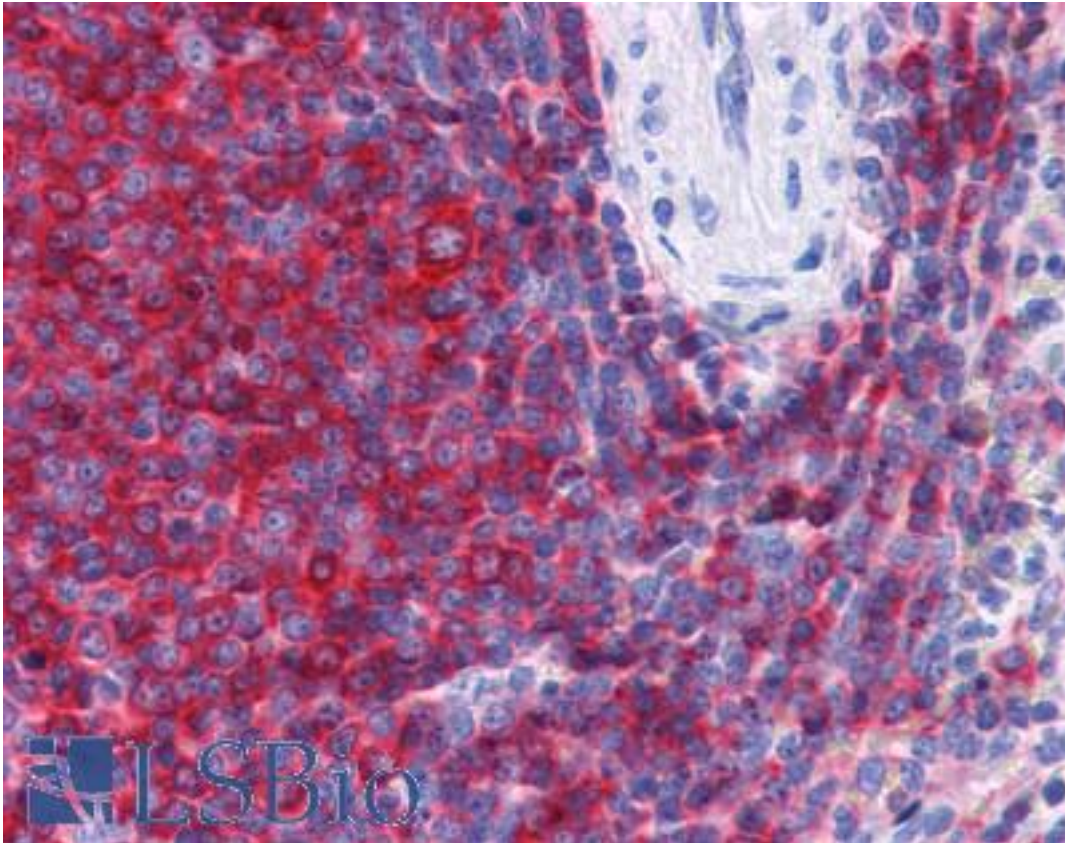


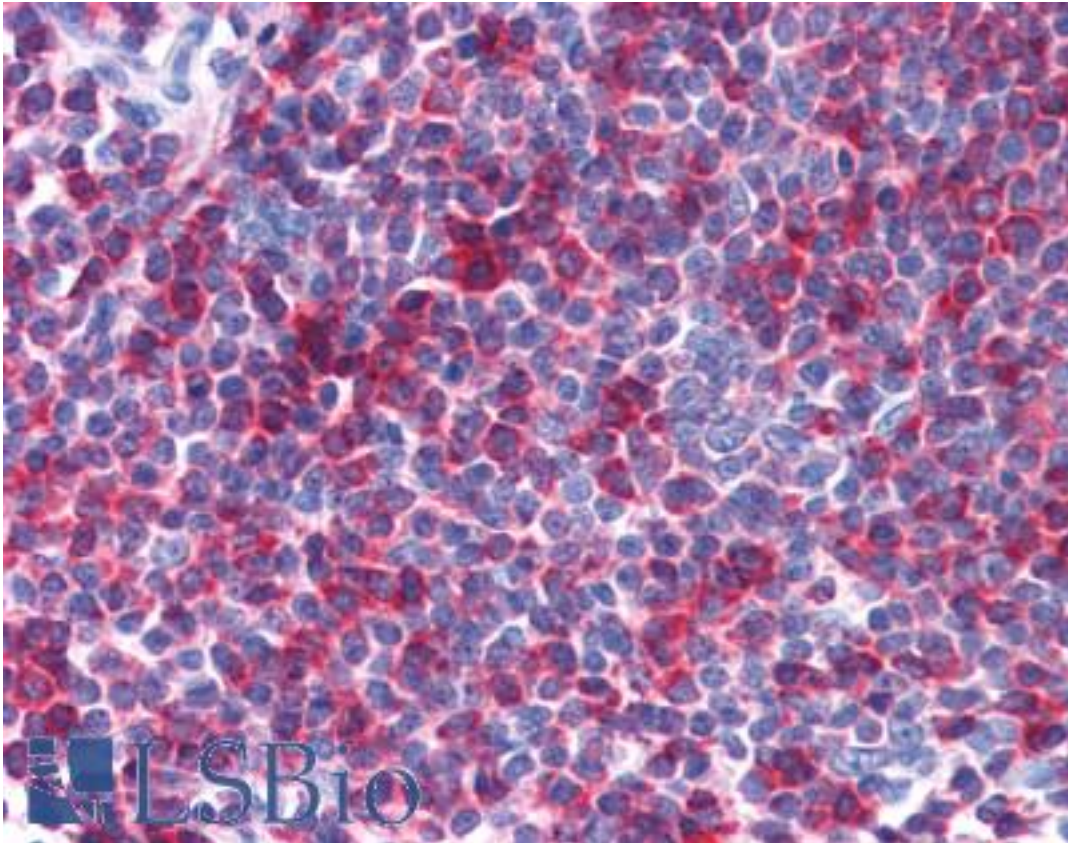
SH3BP1 Goat anti-Human Polyclonal (C-Terminus) Antibody - LS-B3930 - LSBio	
<b>CatalogID:</b>	LS-B3930
<b>Validation:</b>	This antibody replaces catalog number LS-C55462. It has been validated for use in the following assays: IHC-P.
<b>Target:</b>	SH3-domain binding protein 1 (SH3BP1)
<b>Synonyms:</b>	SH3BP1 Antibody, 3BP-1 Antibody, ARHGAP43 Antibody, SH3-domain binding protein 1 Antibody, SH3 domain binding protein 1 Antibody, SH3 domain-binding protein 1 Antibody
<b>Host</b>	SH3BP1 antibody was produced in Goat
<b>Clonality:</b>	Polyclonal
<b>Immunogen Species:</b>	SH3BP1 antibody was raised against Human
<b>Antigen Type:</b>	Synthetic peptide
<b>Immunogen:</b>	SH3BP1 antibody was raised against synthetic peptide C-PQPRPRSLASETN from the C-terminus of human SH3BP1 (NP_061830.3). Percent identity by BLAST analysis: Human, Gibbon, Monkey, Panda (100%); Bovine, Dog (92%); Elephant, Opossum (85%).
<b>Specificity:</b>	Human SH3BP1.
<b>Epitope:</b>	C-Terminus
<b>Reactivity:</b>	Human, Gibbon, Monkey
<b>Predicted Reactivity:</b>	Bovine, Dog
<b>Purification:</b>	Immunoaffinity purified
<b>Presentation:</b>	Tris-buffered saline, pH 7.3, 0.5% BSA, 0.02% sodium azide
<b>Recommended Storage:</b>	Store at -20°C. Minimize freezing and thawing.
<b>Uses:</b>	IHC - Paraffin (2.5 µg/ml), Western blot (1 - 3 µg/ml), ELISA (1:16000) (Optimal dilution to be determined by the researcher)
<b>Size:</b>	50 µg
<b>Concentration:</b>	0.5 mg/ml

**Immunohistochemistry Image:**



Anti-SH3BP1 antibody IHC of human spleen. Immunohistochemistry of formalin-fixed, paraffin-embedded tissue after heat-induced antigen retrieval. Antibody LS-B3930 concentration 2.5 ug/ml.

**Immunohistochemistry Image:**



Anti-SH3BP1 antibody IHC of human tonsil. Immunohistochemistry of formalin-fixed, paraffin-embedded tissue after heat-induced antigen retrieval. Antibody LS-B3930 concentration 2.5 ug/ml.

**Western Blot Image:**



Antibody staining (1 ug/ml) of Human Brain lysate (RIPA buffer, 35 ug total protein per lane). Primary incubated for 1 hour. Detected by Western blot of chemiluminescence.

**Requested From:**

Japan

Laboratory Reagent For In Vitro Research Use Only

Not for resale without prior written consent from LifeSpan BioSciences, Inc.

Created on 9/23/2014

© 2014 LifeSpan BioSciences