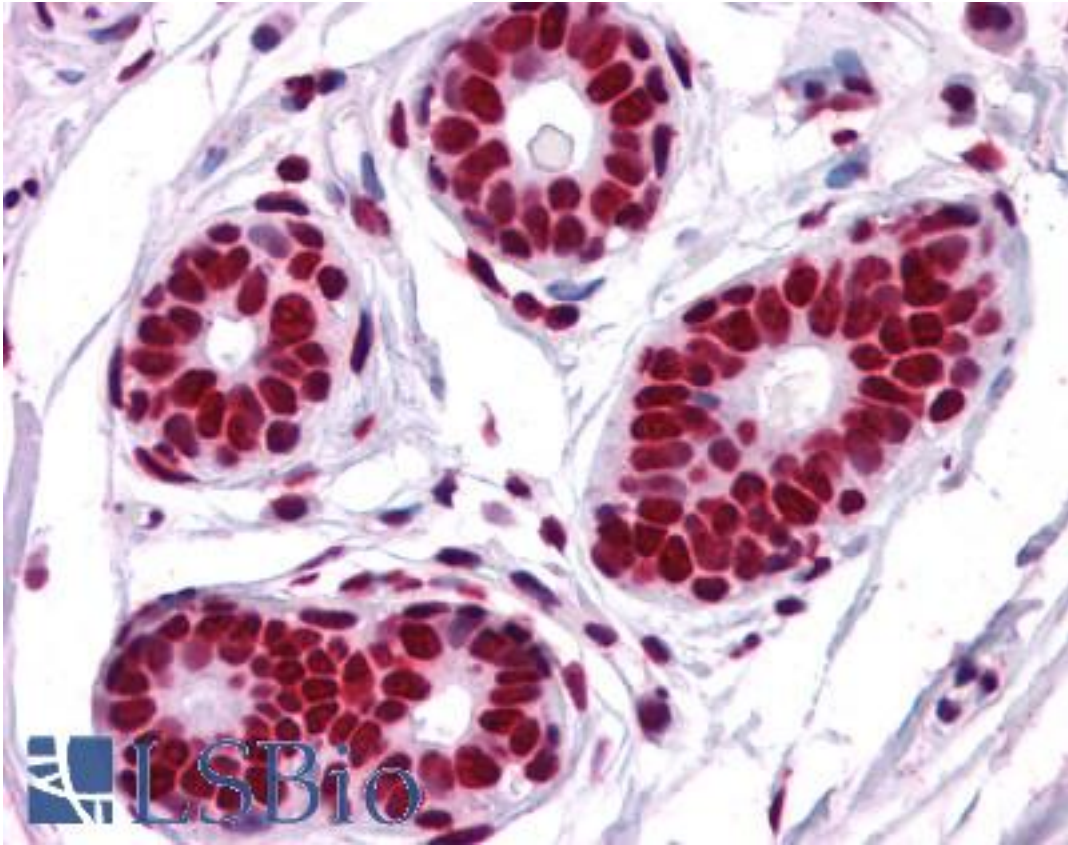


TRIM28 / KAP-1 Goat anti-Human Polyclonal (C-Terminus) Antibody - LS-B3928 - LSBio

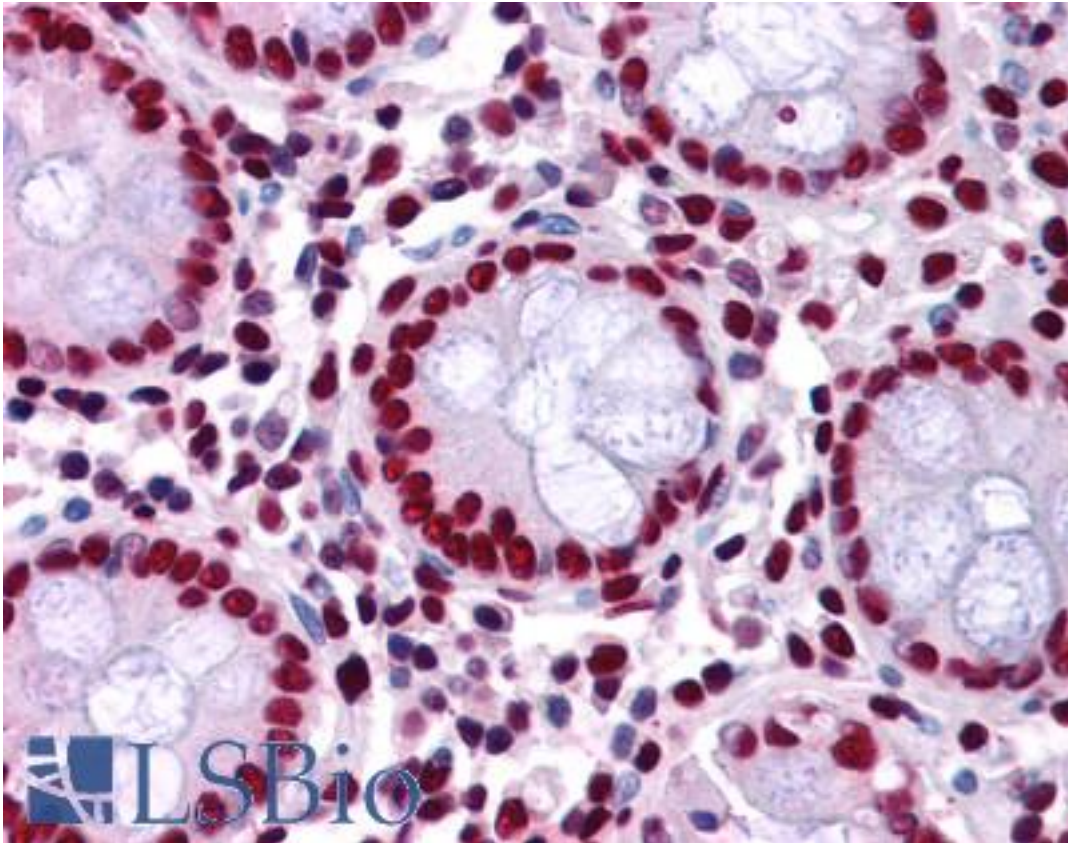
CatalogID:	LS-B3928
Validation:	This antibody replaces catalog number LS-C20171. It has been validated for use in the following assays: IHC-P.
Target:	tripartite motif containing 28 (TRIM28)
Synonyms:	TRIM28 Antibody, E3 SUMO-protein ligase TRIM28 Antibody, KRIP-1 Antibody, Nuclear corepressor KAP-1 Antibody, KAP-1 Antibody, KAP1 Antibody, KRAB-interacting protein 1 Antibody, TIF1B Antibody, RNF96 Antibody, TIF1-beta Antibody, TIF1beta Antibody, Tripartite motif-containing 28 Antibody, KRAB-associated protein 1 Antibody, RING finger protein 96 Antibody, TF1B Antibody, Tif1beta zinc finger protein Antibody, Tripartite motif containing 28 Antibody
Family / Subfamily:	Tripartite Motif / TIF1
Host	TRIM28 antibody was produced in Goat
Clonality:	Polyclonal
Immunogen Species:	TRIM28 / KAP-1 antibody was raised against Human
Antigen Type:	Synthetic peptide
Immunogen:	TRIM28 / KAP-1 antibody was raised against synthetic peptide C-SSQELSGGPGDGP from the C-terminus of human TRIM28 (NP_005753.1). Percent identity by BLAST analysis: Human, Gorilla, Gibbon, Monkey, Marmoset (100%); Mouse, Rat, Bat (92%); Panda, Dog, Rabbit, Horse (85%).
Specificity:	Human TRIM28.
Epitope:	C-Terminus
Reactivity:	Human, Gorilla, Gibbon, Monkey
Predicted Reactivity:	Mouse, Rat, Bat
Purification:	Immunoaffinity purified
Presentation:	Tris-buffered saline, pH 7.3, 0.5% BSA, 0.02% sodium azide
Recommended Storage:	Store at -20°C. Minimize freezing and thawing.
Uses:	IHC - Paraffin (2.5 µg/ml), Immunofluorescence, Western blot (0.2 - 1 µg/ml), ELISA (Optimal dilution to be determined by the researcher)
Size:	50 µg
Concentration:	0.5 mg/ml

Immunohistochemistry Image:



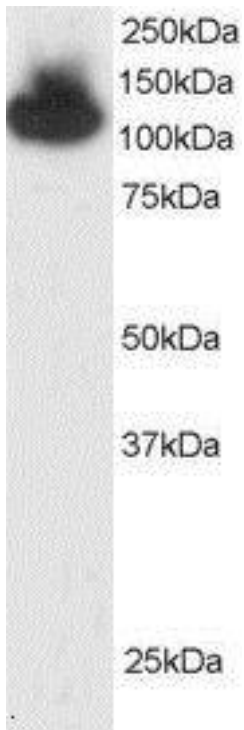
Anti-TRIM28 antibody IHC of human breast. Immunohistochemistry of formalin-fixed, paraffin-embedded tissue after heat-induced antigen retrieval. Antibody LS-B3928 concentration 2.5 ug/ml.

Immunohistochemistry Image:



Anti-TRIM28 antibody IHC of human colon. Immunohistochemistry of formalin-fixed, paraffin-embedded tissue after heat-induced antigen retrieval. Antibody LS-B3928 concentration 2.5 ug/ml.

Western Blot Image:



Staining (0.5 ug/ml) of HepG2 lysate (RIPA buffer, 30 ug total protein per lane). Primary incubated for 1 hour. Detected by chemiluminescence.

Requested From:

Japan

Laboratory Reagent For In Vitro Research Use Only

Not for resale without prior written consent from LifeSpan BioSciences, Inc.

Created on 9/23/2014

© 2014 LifeSpan BioSciences