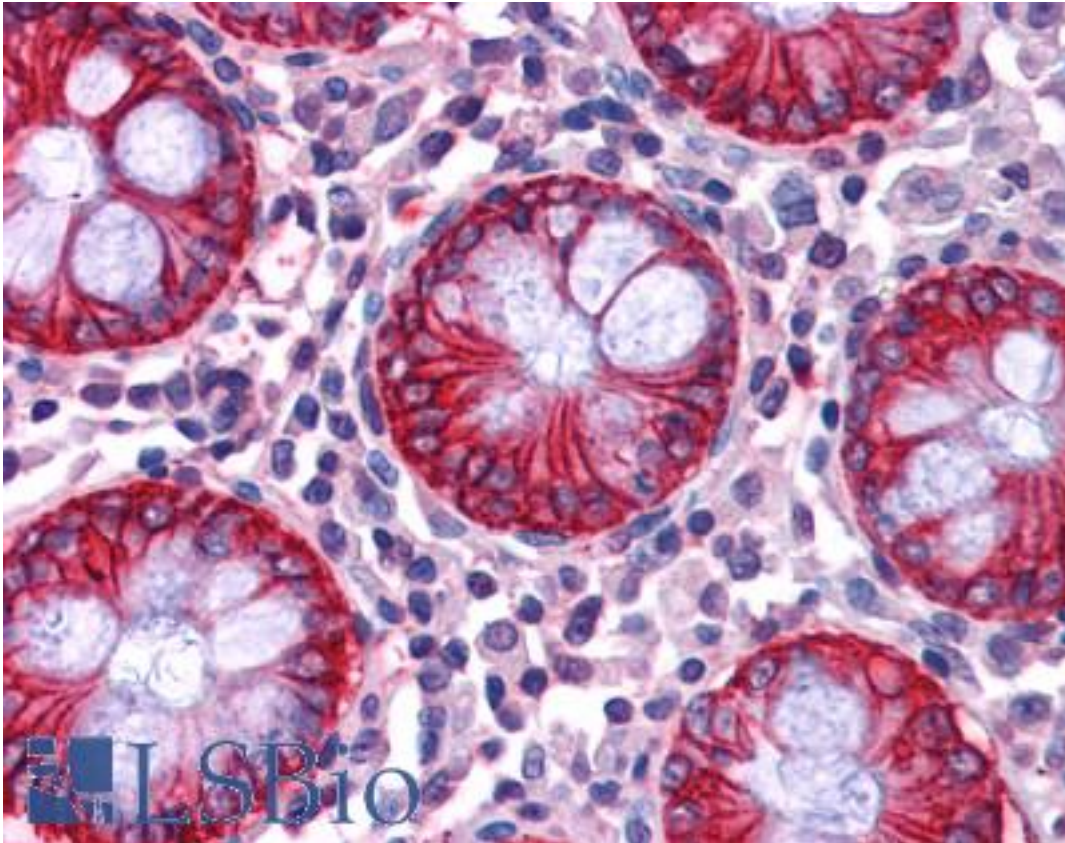


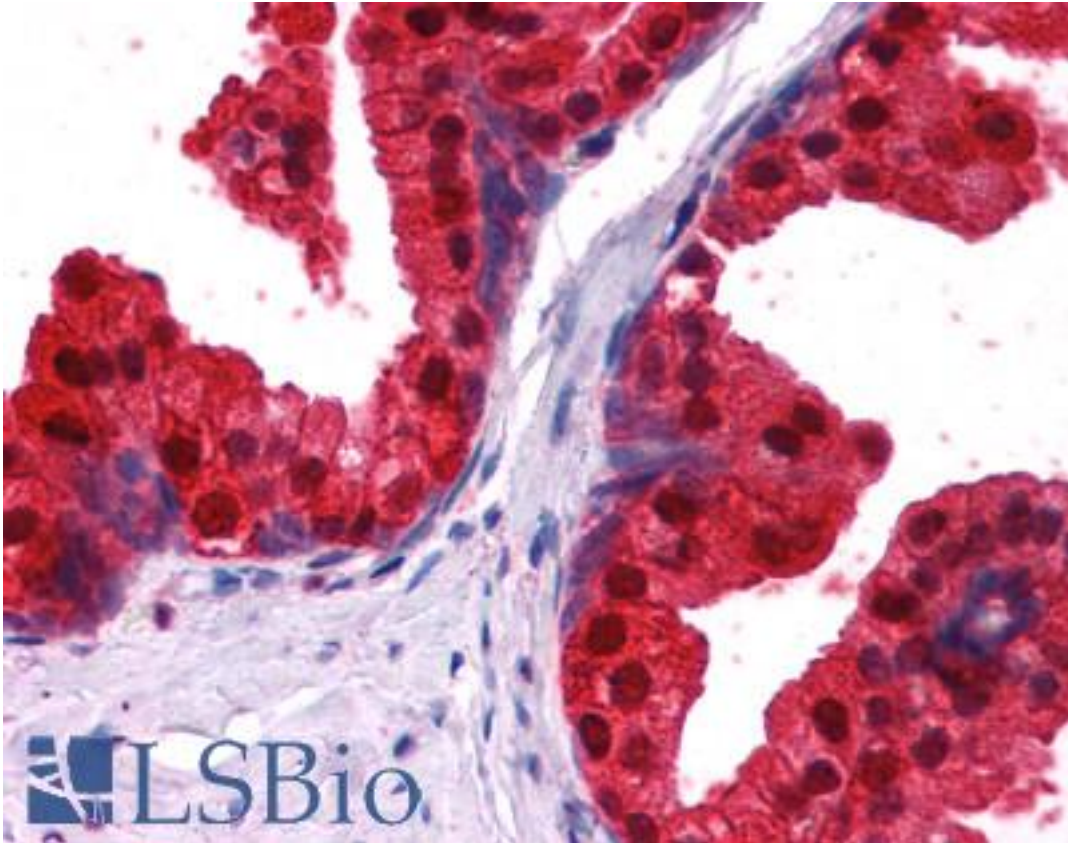
NDRG1 Goat anti-Human Polyclonal (C-Terminus) Antibody - LS-B3927 - LSBio	
CatalogID:	LS-B3927
Validation:	This antibody replaces catalog number LS-C55152. It has been validated for use in the following assays: IHC-P.
Target:	N-myc downstream regulated 1 (NDRG1)
Synonyms:	NDRG1 Antibody, CMT4D Antibody, DRG-1 Antibody, GC4 Antibody, HMSNL Antibody, Protein regulated by oxygen-1 Antibody, PROXY1 Antibody, Protein NDRG1 Antibody, TARG1 Antibody, TDD5 Antibody, NDR1 Antibody, RTP Antibody, CAP43 Antibody, N-myc downstream regulated 1 Antibody, NMSL Antibody, RIT42 Antibody
Host	NDRG1 antibody was produced in Goat
Clonality:	Polyclonal
Immunogen Species:	NDRG1 antibody was raised against Human
Antigen Type:	Synthetic peptide
Immunogen:	NDRG1 antibody was raised against synthetic peptide GNSAGPKSMEVSC from the C-terminus of human NDRG1 (NP_006087.2; NP_001128714.1). Percent identity by BLAST analysis: Human, Rabbit (100%); Gorilla, Gibbon, Monkey, Mouse, Rat, Hamster, Elephant, Panda, Dog, Bat (92%); Marmoset (85%).
Specificity:	Human NDRG1. The variants (NP_006087.2; NP_001128714.1) encode the same protein
Epitope:	C-Terminus
Reactivity:	Human, Rabbit
Predicted Reactivity:	Gorilla, Gibbon, Monkey, Mouse, Rat, Bat, Dog, Hamster
Purification:	Immunoaffinity purified
Presentation:	Tris-buffered saline, pH 7.3, 0.5% BSA, 0.02% sodium azide
Recommended Storage:	Store at -20°C. Minimize freezing and thawing.
Uses:	IHC - Paraffin (2.5 µg/ml), Western blot (1:32000) & (0.1 - 0.3 µg/ml), ELISA (1:32000) (Optimal dilution to be determined by the researcher)
Size:	50 µg
Concentration:	0.5 mg/ml

Immunohistochemistry Image:



Anti-NDRG1 antibody IHC of human colon. Immunohistochemistry of formalin-fixed, paraffin-embedded tissue after heat-induced antigen retrieval. Antibody LS-B3927 concentration 2.5 ug/ml.

Immunohistochemistry Image:



Anti-NDRG1 antibody IHC of human prostate. Immunohistochemistry of formalin-fixed, paraffin-embedded tissue after heat-induced antigen retrieval. Antibody LS-B3927 concentration 2.5 ug/ml.

Western Blot Image:



Antibody staining (0.1 ug/ml) of Human Kidney lysate (RIPA buffer, 35 ug total protein per lane). Primary incubated for 1 hour. Detected by Western blot of chemiluminescence.

Requested From:

Japan

Laboratory Reagent For In Vitro Research Use Only

Not for resale without prior written consent from LifeSpan BioSciences, Inc.

Created on 9/23/2014

© 2014 LifeSpan BioSciences