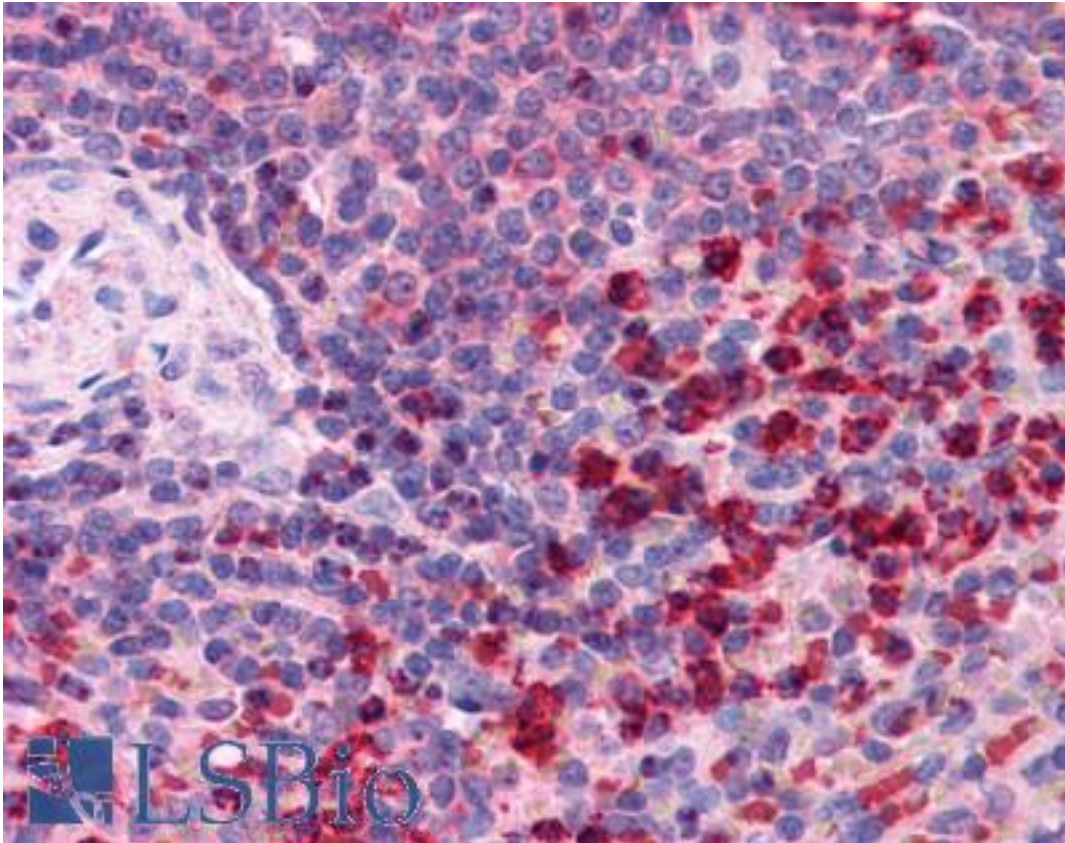


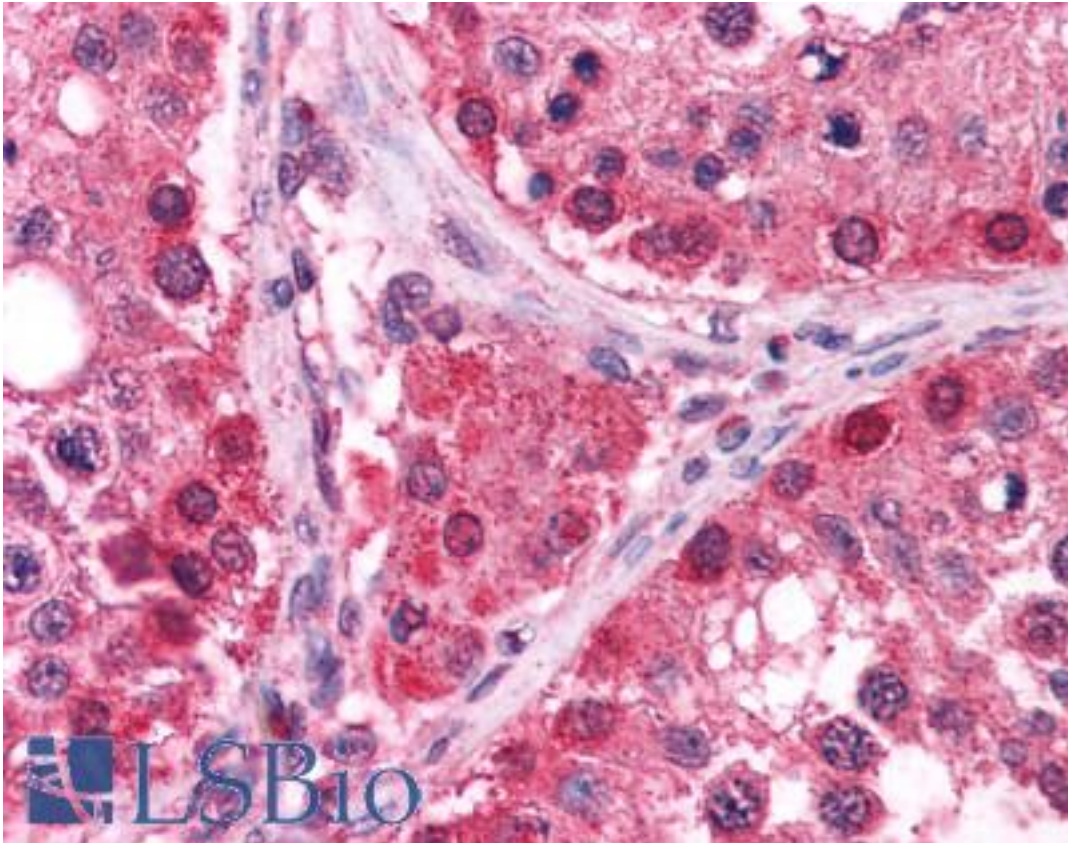
TRXR1 / TXNRD1 Goat anti-Human Polyclonal (C-Terminus) Antibody - LS-B3926 - LSBio	
<b>CatalogID:</b>	LS-B3926
<b>Validation:</b>	This antibody replaces catalog number LS-C55584. It has been validated for use in the following assays: IHC-P.
<b>Target:</b>	thioredoxin reductase 1 (TXNRD1)
<b>Synonyms:</b>	TXNRD1 Antibody, GRIM12 Antibody, KDRF Antibody, Oxidoreductase Antibody, TRXR1 Antibody, Thioredoxin reductase GRIM-12 Antibody, Thioredoxin reductase 1 Antibody, TR Antibody, GRIM-12 Antibody, Thioredoxin reductase Antibody, Thioredoxin reductase TR1 Antibody, TR1 Antibody, TXNR Antibody
<b>Host</b>	TXNRD1 antibody was produced in Goat
<b>Clonality:</b>	Polyclonal
<b>Immunogen Species:</b>	TRXR1 / TXNRD1 antibody was raised against Human
<b>Antigen Type:</b>	Synthetic peptide
<b>Immunogen:</b>	TRXR1 / TXNRD1 antibody was raised against synthetic peptide TKRSGASILQAGC from the C-terminus of human TXNRD1 (NP_003321.2; NP_877393.1; NP_877419.1; NP_877420.1; NP_001087240.1). Percent identity by BLAST analysis: Human, Gorilla, Orangutan, Gibbon, Marmoset, Dog, Pig (100%); Elephant, Bat, Opossum (92%); Rabbit (85%).
<b>Specificity:</b>	Human TXNRD1. This antibody is expected to recognise reported isoform 1 (NP_003321.2), isoform 2 (NP_877393.1; NP_877419.1; NP_877420.1) and isoform 3 (NP_001087240.1)
<b>Epitope:</b>	C-Terminus
<b>Reactivity:</b>	Human, Gorilla, Orangutan, Gibbon, Monkey, Dog, Pig
<b>Predicted Reactivity:</b>	Bat
<b>Purification:</b>	Immunoaffinity purified
<b>Presentation:</b>	Tris-buffered saline, pH 7.3, 0.5% BSA, 0.02% sodium azide
<b>Recommended Storage:</b>	Store at -20°C. Minimize freezing and thawing.
<b>Uses:</b>	IHC - Paraffin (2.5 µg/ml), Western blot (1:32000) & (0.1 - 1 µg/ml), ELISA (1:32000) (Optimal dilution to be determined by the researcher)
<b>Size:</b>	50 µg
<b>Concentration:</b>	0.5 mg/ml

**Immunohistochemistry Image:**



Anti-TXNRD1 antibody IHC of human spleen. Immunohistochemistry of formalin-fixed, paraffin-embedded tissue after heat-induced antigen retrieval. Antibody LS-B3926 concentration 2.5 ug/ml.

**Immunohistochemistry Image:**



Anti-TXNRD1 antibody IHC of human testis. Immunohistochemistry of formalin-fixed, paraffin-embedded tissue after heat-induced antigen retrieval. Antibody LS-B3926 concentration 2.5 ug/ml.

**Western Blot Image:**



Antibody staining (0.1 ug/ml) of Human Placenta lysate (RIPA buffer, 35 ug total protein per lane). Primary incubated for 1 hour. Detected by Western blot of chemiluminescence.

**Requested From:**

Japan

Laboratory Reagent For In Vitro Research Use Only

Not for resale without prior written consent from LifeSpan BioSciences, Inc.

Created on 9/23/2014

© 2014 LifeSpan BioSciences