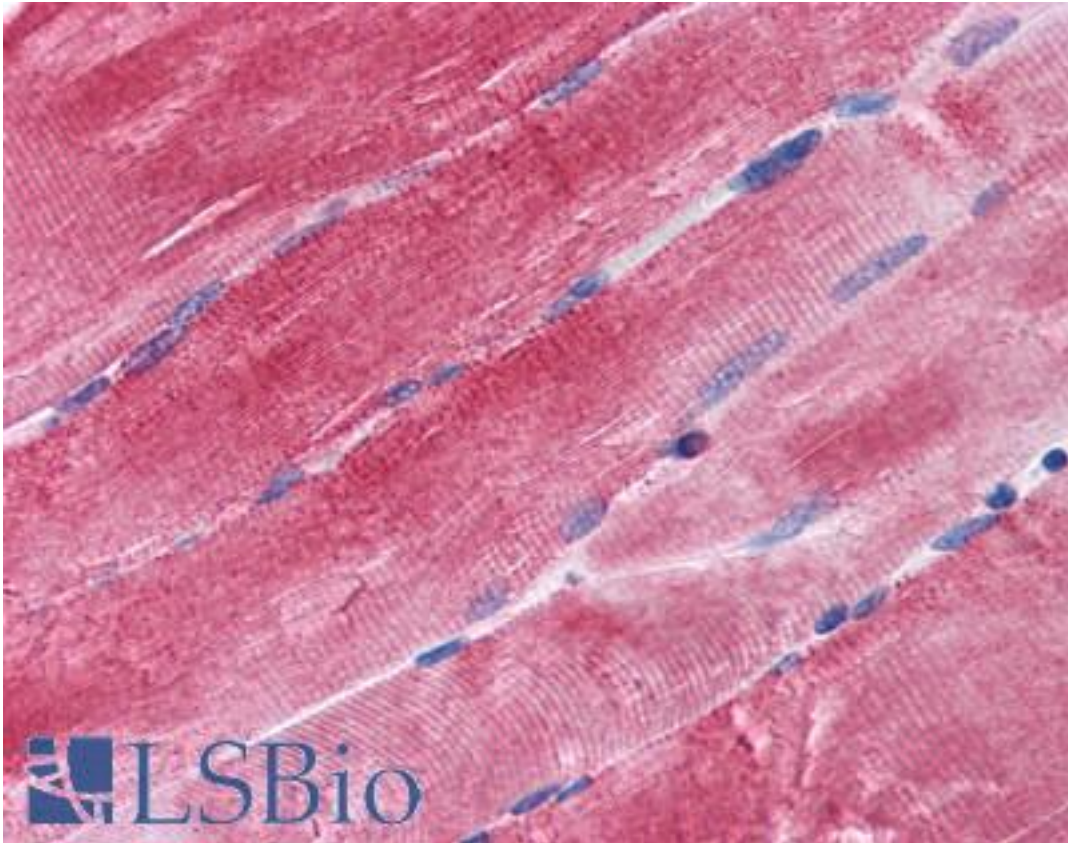


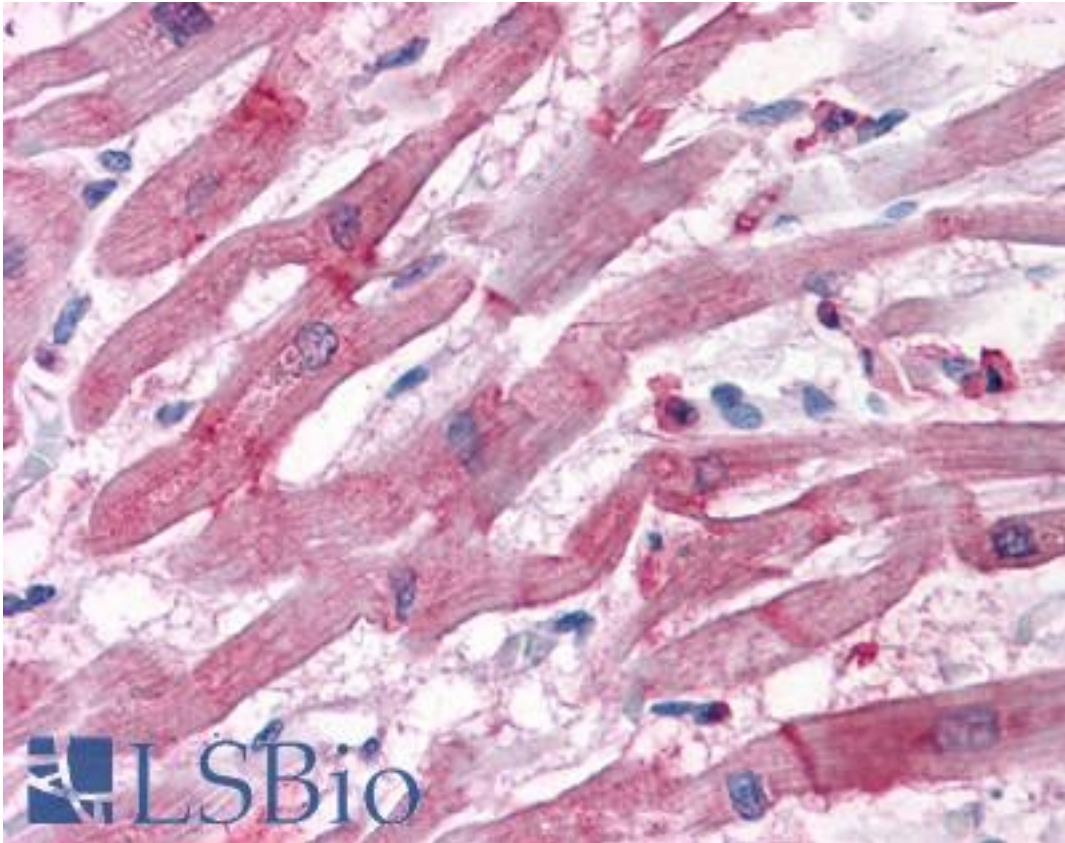
BAG3 / BAG-3 Goat anti-Human Polyclonal (C-Terminus) Antibody - LS-B3925 - LSBio	
CatalogID:	LS-B3925
Validation:	This antibody replaces catalog number LS-C54565. It has been validated for use in the following assays: IHC-P.
Target:	BCL2-associated athanogene 3 (BAG3)
Synonyms:	BAG3 Antibody, Bcl-2-associated athanogene 3 Antibody, Bcl-2-binding protein Bis Antibody, BCL2-binding athanogene 3 Antibody, BIS Antibody, BAG-3 Antibody, CAIR-1 Antibody, Docking protein cair1 Antibody, BCL2-associated athanogene 3 Antibody, Docking protein CAIR-1 Antibody
Host	BAG3 antibody was produced in Goat
Clonality:	Polyclonal
Immunogen Species:	BAG3 / BAG-3 antibody was raised against Human
Antigen Type:	Synthetic peptide
Immunogen:	BAG3 / BAG-3 antibody was raised against synthetic peptide C-SSMTDTPGNPAAP from the C-terminus of human BAG3 (NP_004272.2). Percent identity with other species by BLAST analysis: Human (100%), Gorilla (85%), Monkey (85%), Marmoset (85%).
Specificity:	Human BAG3.
Epitope:	C-Terminus
Reactivity:	Human
Purification:	Immunoaffinity purified
Presentation:	Tris-buffered saline, pH 7.3, 0.5% BSA, 0.02% sodium azide
Recommended Storage:	Store at -20°C. Minimize freezing and thawing.
Uses:	IHC - Paraffin (3.75 µg/ml), Western blot, ELISA (1:8000) (Optimal dilution to be determined by the researcher)
Size:	50 µg
Concentration:	0.5 mg/ml

Immunohistochemistry Image:



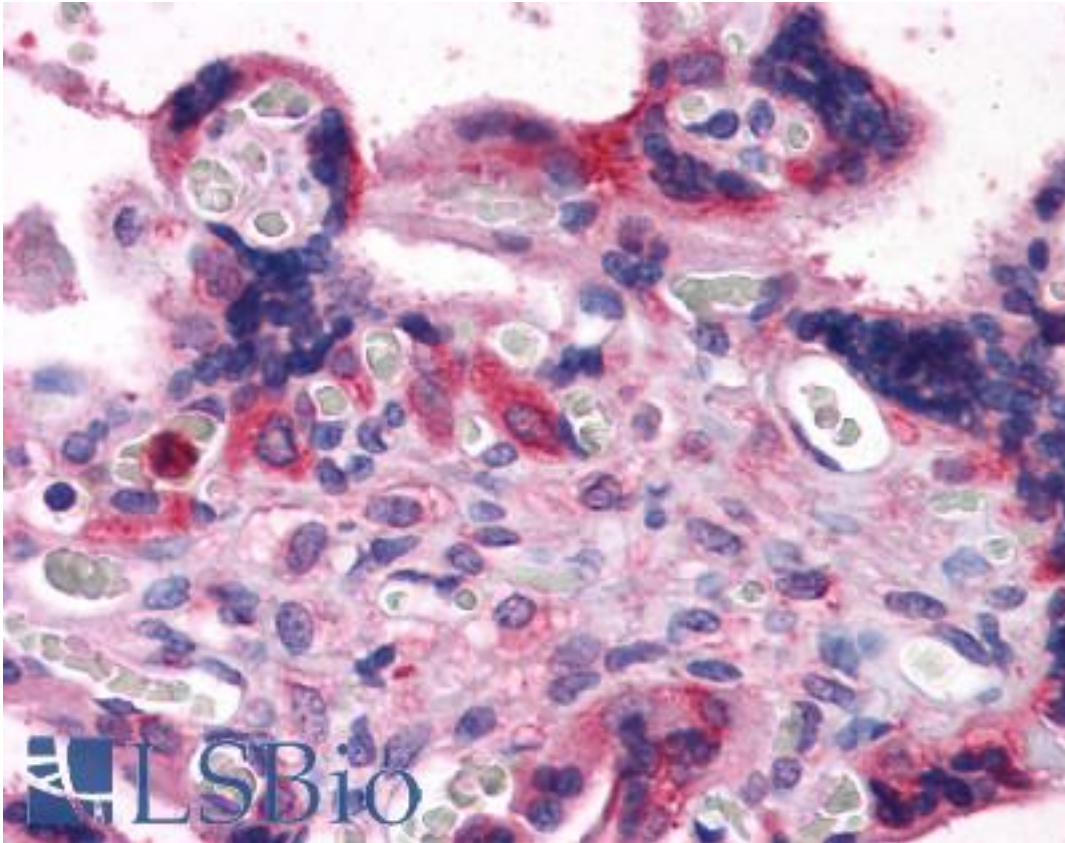
Anti-BAG3 antibody IHC of human skeletal muscle. Immunohistochemistry of formalin-fixed, paraffin-embedded tissue after heat-induced antigen retrieval. Antibody LS-B3925 concentration 3.75 ug/ml.

Immunohistochemistry Image:



Anti-BAG3 antibody IHC of human heart. Immunohistochemistry of formalin-fixed, paraffin-embedded tissue after heat-induced antigen retrieval. Antibody LS-B3925 concentration 3.75 ug/ml.

Immunohistochemistry Image:



Anti-BAG3 antibody IHC of human placenta. Immunohistochemistry of formalin-fixed, paraffin-embedded tissue after heat-induced antigen retrieval. Antibody LS-B3925 concentration 3.75 ug/ml.

Requested From:

Japan

Laboratory Reagent For In Vitro Research Use Only

Not for resale without prior written consent from LifeSpan BioSciences, Inc.

Created on 9/23/2014

© 2014 LifeSpan BioSciences