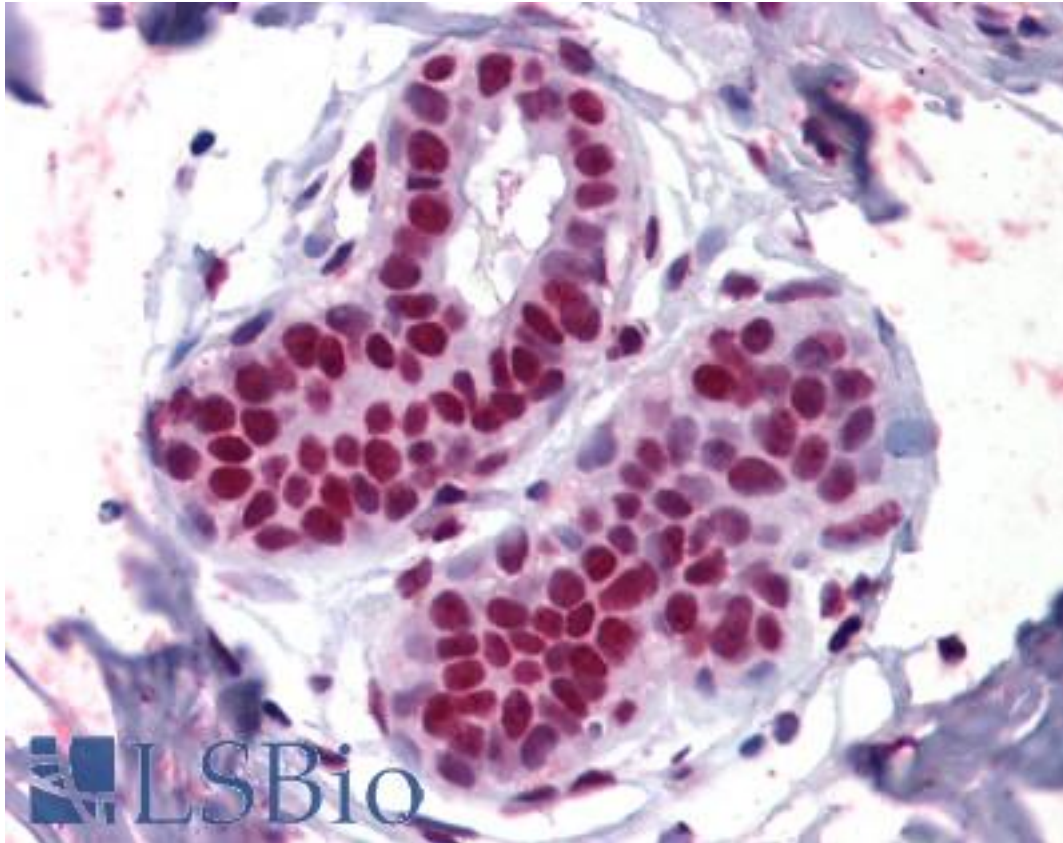


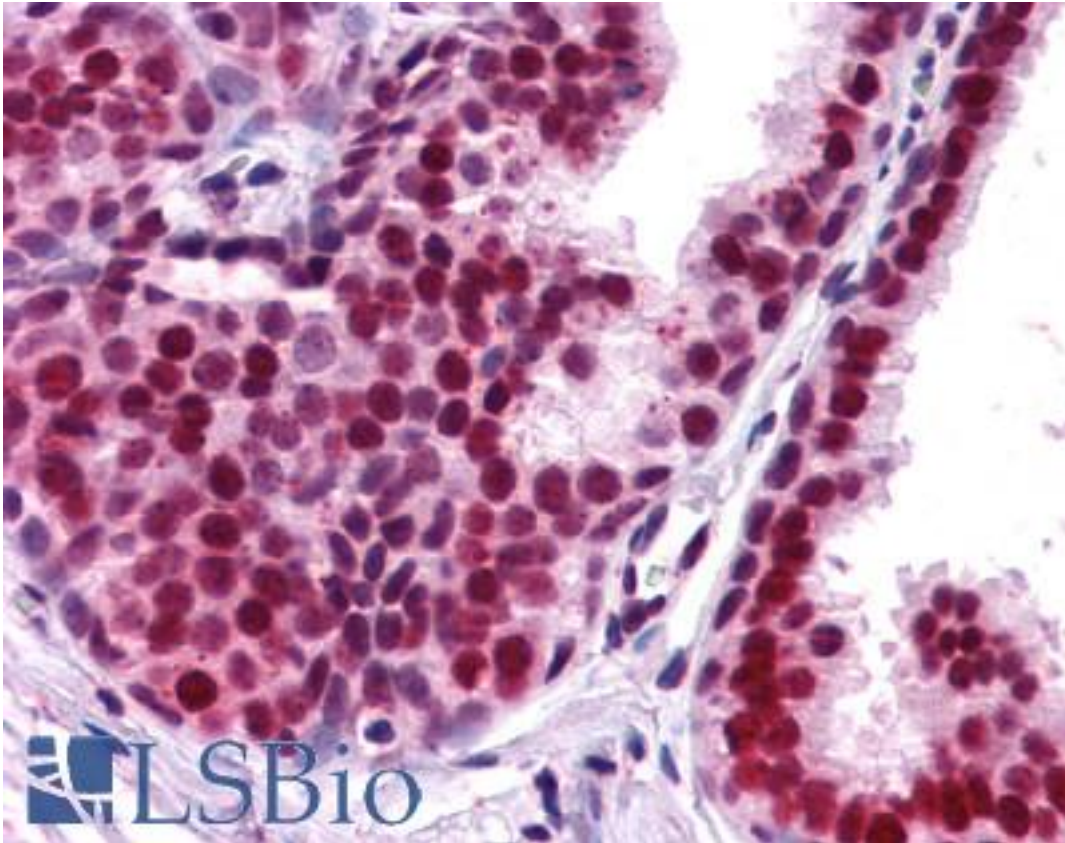
APEX1 / APE1 Goat anti-Human Polyclonal (N-Terminus) Antibody - LS-B3924 - LSBio	
CatalogID:	LS-B3924
Validation:	This antibody replaces catalog number LS-C20124. It has been validated for use in the following assays: IHC-P.
Target:	APEX nuclease (multifunctional DNA repair enzyme) 1 (APEX1)
Synonyms:	APEX1 Antibody, AP endonuclease class I Antibody, AP lyase Antibody, APE Antibody, APE-1 Antibody, APEN Antibody, APE1 Antibody, APEX nuclease Antibody, Redox factor-1 Antibody, AP endonuclease 1 Antibody, APEX Antibody, APX Antibody, Protein REF-1 Antibody, REF-1 Antibody, REF1 Antibody
Host	APEX1 antibody was produced in Goat
Clonality:	Polyclonal
Immunogen Species:	APEX1 / APE1 antibody was raised against Human
Antigen Type:	Synthetic peptide
Immunogen:	APEX1 / APE1 antibody was raised against synthetic peptide PKRGKKGAVAEDGD-C from the N-terminus of human APEX1 / APE1 (NP_001632.2). Percent identity by BLAST analysis: Human, Chimpanzee, Gorilla, Orangutan, Gibbon, Monkey (100%); Marmoset, Panda, Bat, Horse, Pig (93%); Rabbit (86%).
Specificity:	Human APEX1 / APE1. Reported variants represent identical protein (NP_001632.2; NP_542379.1; NP_542380.1).
Epitope:	N-Terminus
Reactivity:	Human, Chimpanzee, Gorilla, Orangutan, Gibbon
Predicted Reactivity:	Monkey, Bat, Horse, Pig
Purification:	Immunoaffinity purified
Presentation:	Tris-buffered saline, pH 7.3, 0.5% BSA, 0.02% sodium azide
Recommended Storage:	Store at -20°C. Minimize freezing and thawing.
Uses:	IHC - Paraffin (5 µg/ml), Western blot (0.2 - 1 µg/ml), ELISA (Optimal dilution to be determined by the researcher)
Size:	50 µg
Concentration:	0.5 mg/ml

Immunohistochemistry Image:



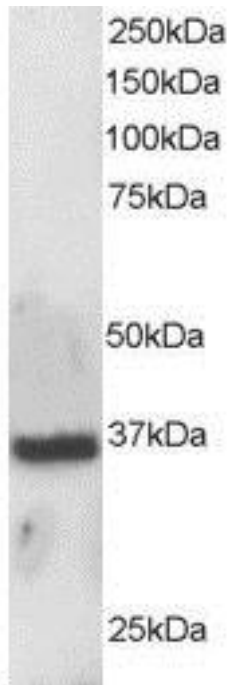
Anti-APEX1 / APE1 antibody IHC of human breast. Immunohistochemistry of formalin-fixed, paraffin-embedded tissue after heat-induced antigen retrieval. Antibody LS-B3924 concentration 5 ug/ml.

Immunohistochemistry Image:



Anti-APEX1 / APE1 antibody IHC of human prostate. Immunohistochemistry of formalin-fixed, paraffin-embedded tissue after heat-induced antigen retrieval. Antibody LS-B3924 concentration 5 ug/ml.

Western Blot Image:



Staining (0.5 ug/ml) of A431 lysate (RIPA buffer, 30 ug total protein per lane). Primary incubated for 1 hour. Detected using chemiluminescence.

Requested From:

Japan

Laboratory Reagent For In Vitro Research Use Only

Not for resale without prior written consent from LifeSpan BioSciences, Inc.

Created on 9/23/2014

© 2014 LifeSpan BioSciences