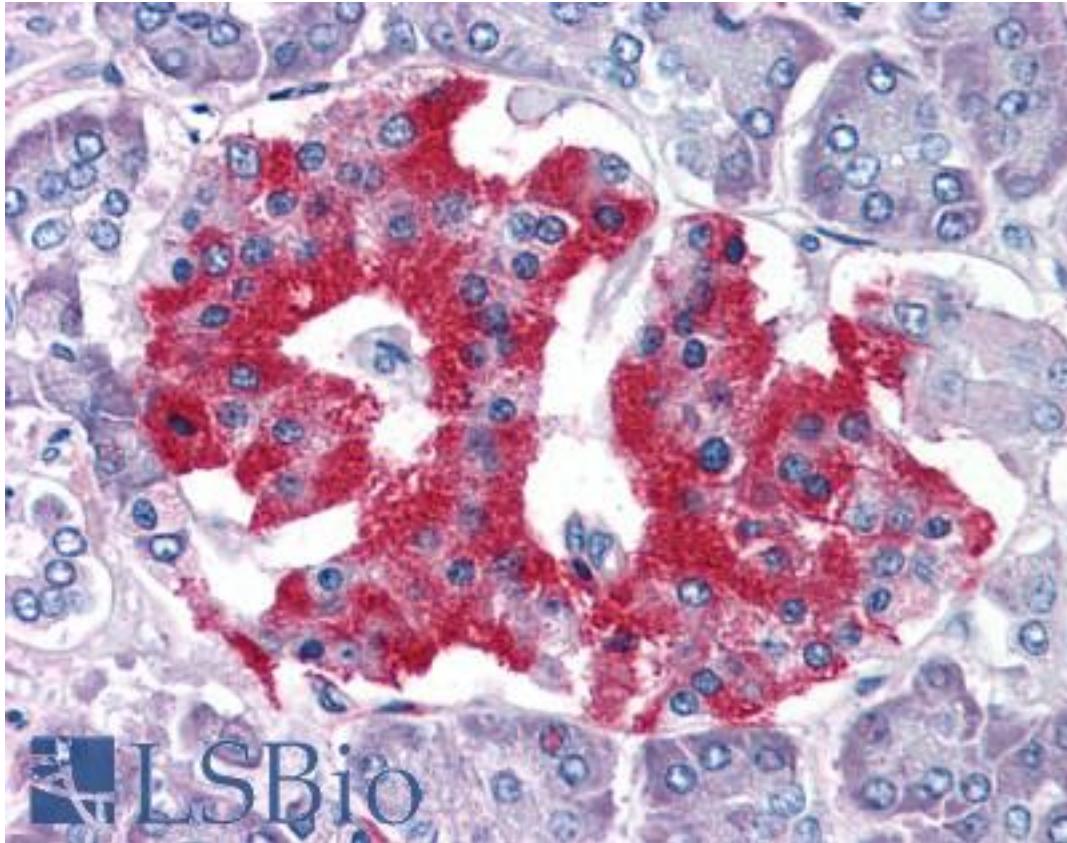


GRB2 Goat anti-Human Polyclonal (C-Terminus) Antibody - LS-B3923 - LSBio	
<b>CatalogID:</b>	LS-B3923
<b>Validation:</b>	This antibody replaces catalog number LS-C20165. It has been validated for use in the following assays: IHC-P.
<b>Target:</b>	growth factor receptor-bound protein 2 (GRB2)
<b>Synonyms:</b>	GRB2 Antibody, Abundant SRC homology Antibody, Adapter protein GRB2 Antibody, ASH Antibody, EGFRBP-GRB2 Antibody, MST084 Antibody, MSTP084 Antibody, Protein Ash Antibody, SH2/SH3 adapter GRB2 Antibody, Grb3-3 Antibody, HT027 Antibody, NCKAP2 Antibody
<b>Host</b>	GRB2 antibody was produced in Goat
<b>Clonality:</b>	Polyclonal
<b>Immunogen Species:</b>	GRB2 antibody was raised against Human
<b>Antigen Type:</b>	Synthetic peptide
<b>Immunogen:</b>	GRB2 antibody was raised against synthetic peptide C-PRNYVTPVNRNV from the C-terminus of human GRB2 (NP_002077.1; NP_987102.1). Percent identity by BLAST analysis: Human, Gorilla, Orangutan, Gibbon, Monkey, Marmoset, Mouse, Rat, Hamster, Elephant, Panda, Dog, Bat, Bovine, Horse, Rabbit, Pig (100%); Turkey, Chicken, Lizard, Xenopus, Salmon, Stickleback, Zebrafish (92%); Opossum (83%).
<b>Specificity:</b>	Human GRB2. This antibody is expected to recognize both reported isoforms (NP_002077.1 and NP_987102.1).
<b>Epitope:</b>	C-Terminus
<b>Reactivity:</b>	Human, Gorilla, Orangutan, Gibbon, Monkey, Mouse, Rat, Bat, Bovine, Dog, Hamster, Horse, Pig, Rabbit
<b>Predicted Reactivity:</b>	Chicken, Xenopus, Zebrafish
<b>Purification:</b>	Immunoaffinity purified
<b>Presentation:</b>	Tris-buffered saline, pH 7.3, 0.5% BSA, 0.02% sodium azide
<b>Recommended Storage:</b>	Store at -20°C. Minimize freezing and thawing.
<b>Usage Summary:</b>	Immunohistochemistry: In paraffin embedded Human Tonsil, stains mantle zone and to a lesser extent germinal centre.
<b>Uses:</b>	IHC - Paraffin (5 µg/ml), Western blot (1 - 3 µg/ml), ELISA (1:32000) (Optimal dilution to be determined by the researcher)
<b>Size:</b>	50 µg
<b>Concentration:</b>	0.5 mg/ml

**Immunohistochemistry Image:**



Anti-GRB2 antibody IHC of human pancreas. Immunohistochemistry of formalin-fixed, paraffin-embedded tissue after heat-induced antigen retrieval. Antibody LS-B3923 concentration 5 ug/ml.

**Western Blot Image:**



Staining (2 ug/ml) of Jurkat lysate (RIPA buffer, 35 ug total protein per lane). Primary incubated for 1 hour. Detected using chemiluminescence.

**Requested From:**

Japan

Laboratory Reagent For In Vitro Research Use Only

Not for resale without prior written consent from LifeSpan BioSciences, Inc.

Created on 9/23/2014

© 2014 LifeSpan BioSciences