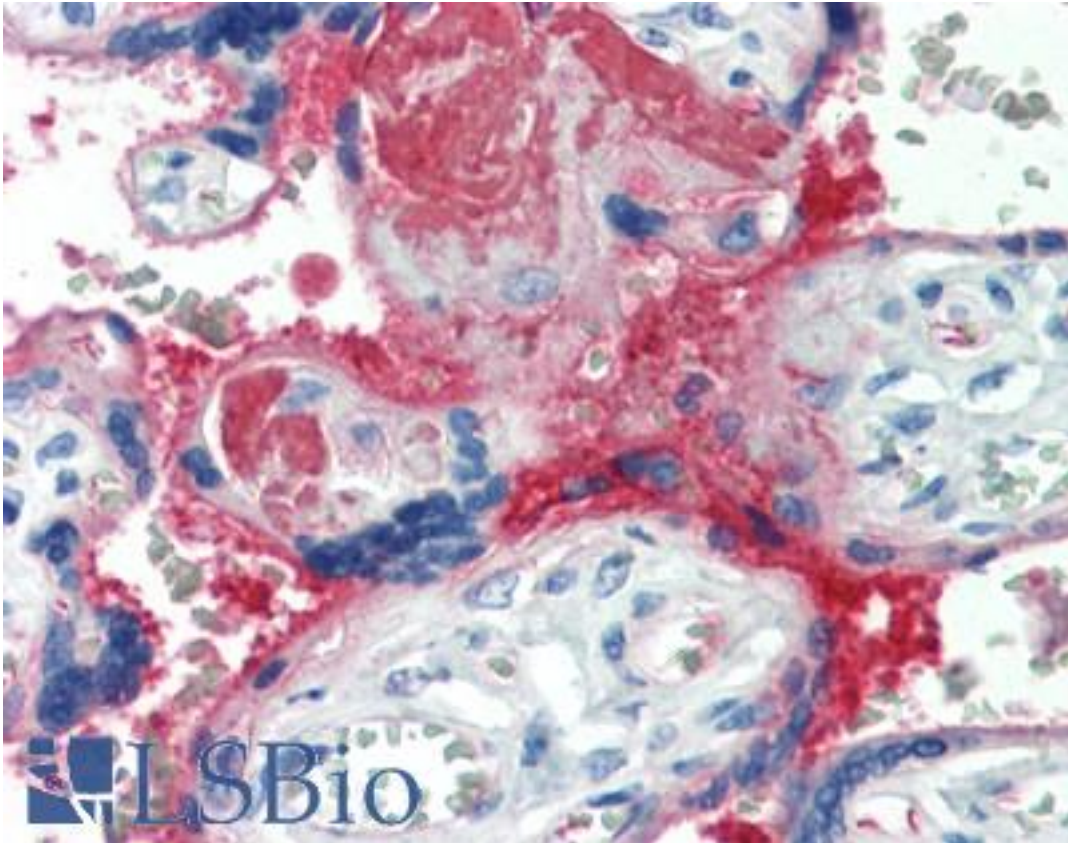


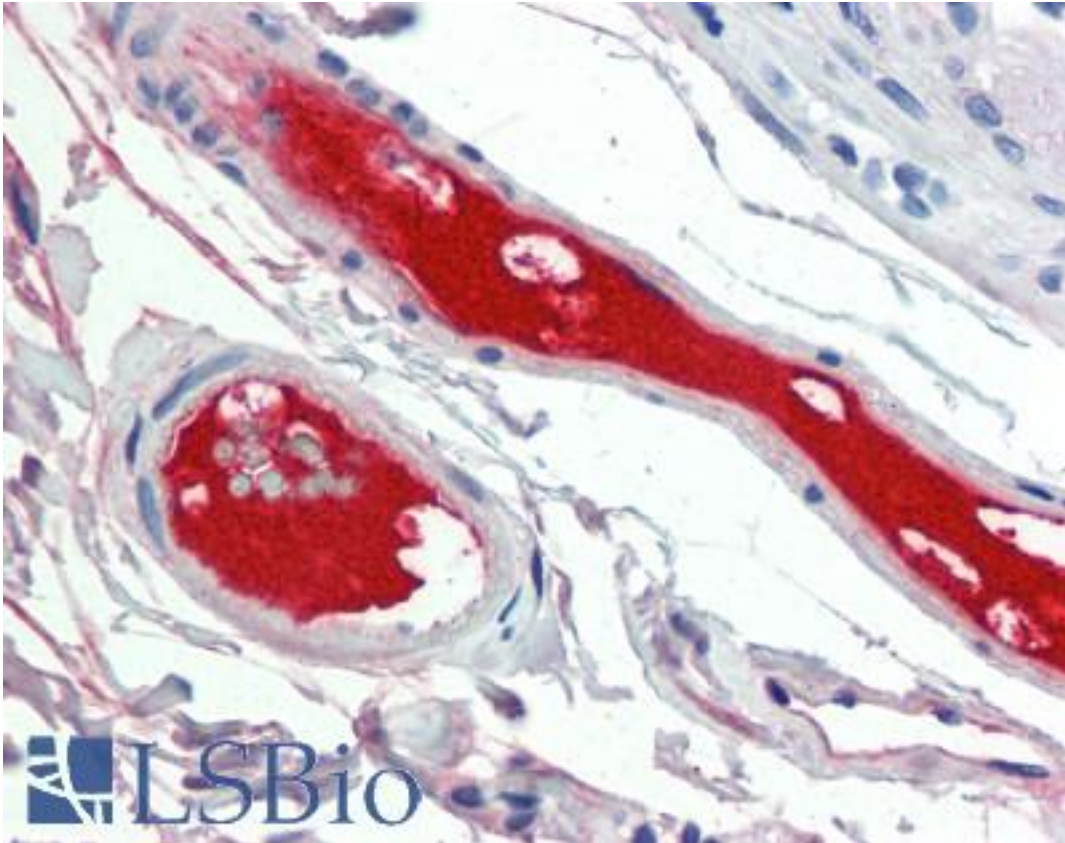
Complement C4d Rabbit anti-Human Polyclonal (Internal) (A24-T) Antibody - LS-B3921 - LSBio	
<b>CatalogID:</b>	LS-B3921
<b>Validation:</b>	This antibody replaces catalog number LS-C108159. It has been validated for use in the following assays: IHC-Fr, IHC-P.
<b>Target:</b>	Complement C4d
<b>Host</b>	Complement C4d antibody was produced in Rabbit
<b>Clonality:</b>	Polyclonal
<b>Clone Name:</b>	A24-T
<b>Immunogen Species:</b>	Complement C4d antibody was raised against Human
<b>Immunogen:</b>	Complement C4d antibody was raised against peptide derived from internal sequence of human C4.
<b>Specificity:</b>	Human Complement C4d
<b>Epitope:</b>	Internal
<b>Reactivity:</b>	Human
<b>Purification:</b>	Purified
<b>Presentation:</b>	20 mM Tris-HCl, pH 8.0, 20 mg/ml BSA, 0.05% sodium azide
<b>Recommended Storage:</b>	Long term: -20°C; Short term: +4°C. Avoid repeat freeze-thaw cycles.
<b>Usage Summary:</b>	Immunohistochemistry: LS-B3921 was validated for use in immunohistochemistry on a panel of 21 formalin-fixed, paraffin-embedded (FFPE) human tissues after heat induced antigen retrieval in pH 6.0 citrate buffer. After incubation with the primary antibody, slides were incubated with biotinylated secondary antibody, followed by alkaline phosphatase-streptavidin and chromogen. The stained slides were evaluated by a pathologist to confirm staining specificity. The optimal working dilution for LS-B3921 was determined to be 1:50.
<b>Uses:</b>	IHC - Paraffin (1:25 - 1:100), IHC - Frozen (1:100 - 1:200) (Optimal dilution to be determined by the researcher)
<b>Size:</b>	125 µl

**Immunohistochemistry Image:**



Anti-C4d antibody IHC of human placenta. Immunohistochemistry of formalin-fixed, paraffin-embedded tissue after heat-induced antigen retrieval. Antibody LS-B3921 dilution 1:25.

**Immunohistochemistry Image:**



Anti-C4d antibody IHC of human small intestine, vessels. Immunohistochemistry of formalin-fixed, paraffin-embedded tissue after heat-induced antigen retrieval. Antibody LS-B3921 dilution 1:25.

**Requested From:**

Japan

Laboratory Reagent For In Vitro Research Use Only

Not for resale without prior written consent from LifeSpan BioSciences, Inc.

Created on 9/23/2014

© 2014 LifeSpan BioSciences