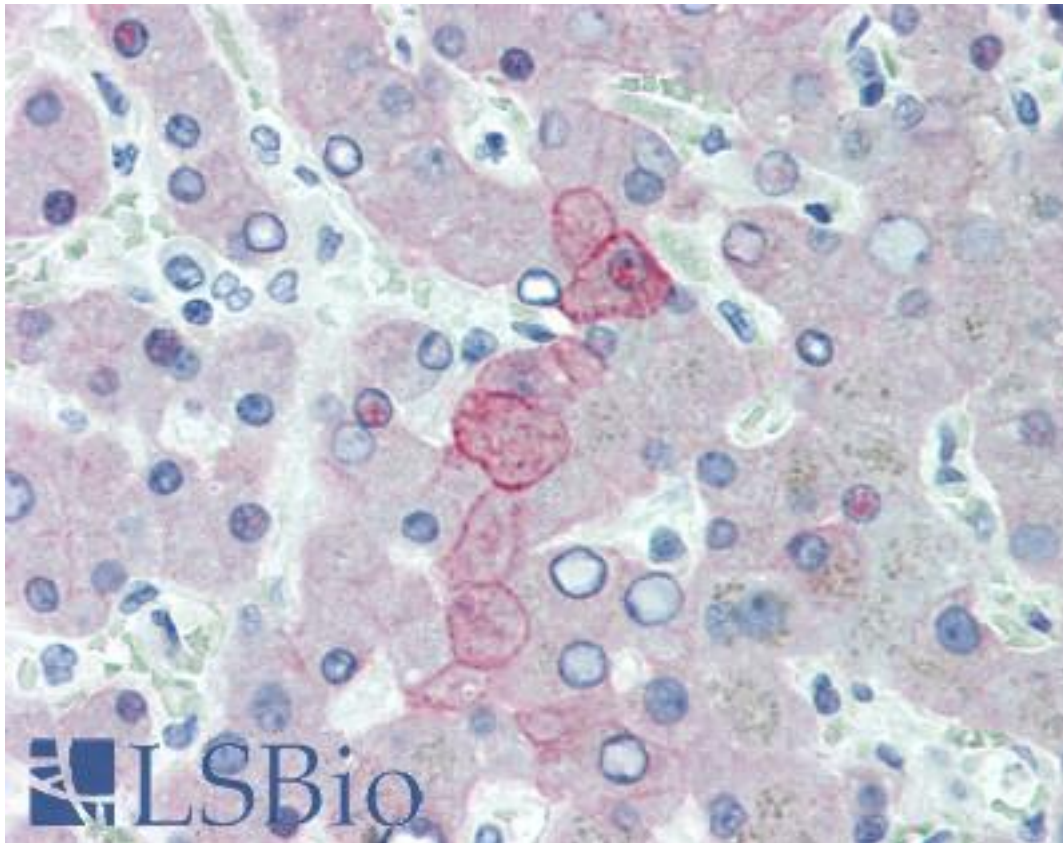


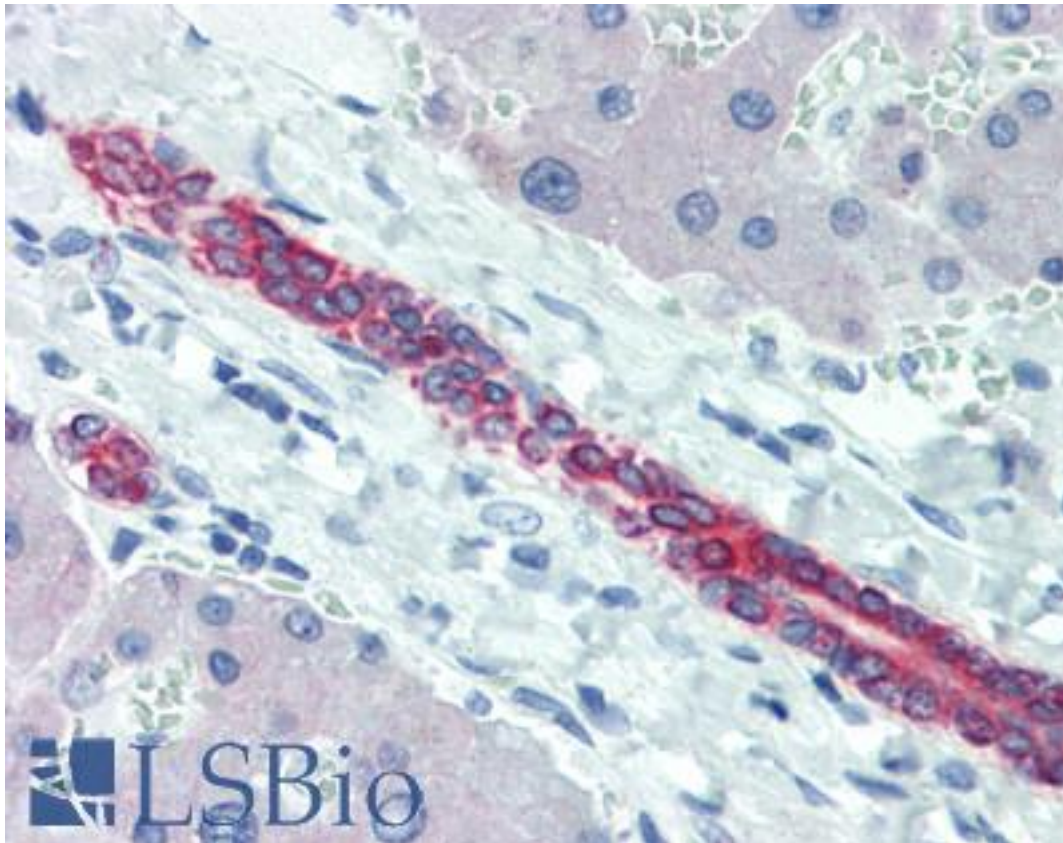
KRT8 / CK8 / Cytokeratin 8 Rabbit anti-Human Polyclonal (C-Terminus) (R15-K) Antibody - LS-B3915 - LSBio	
CatalogID:	LS-B3915
Validation:	This antibody replaces catalog number LS-C108153. It has been validated for use in the following assays: IHC-P.
Target:	keratin 8 (KRT8)
Synonyms:	KRT8 Antibody, CARD2 Antibody, CK-8 Antibody, CYK8 Antibody, Cytokeratin-8 Antibody, CK8 Antibody, K2C8 Antibody, K8 Antibody, KO Antibody, Keratin-8 Antibody, Type-II keratin Kb8 Antibody, Cytokeratin 8 Antibody, Keratin 8 Antibody
Family / Subfamily:	Keratin / not assigned-Keratin
Host	KRT8 antibody was produced in Rabbit
Clonality:	Polyclonal
Clone Name:	R15-K
Immunogen Species:	KRT8 / CK8 / Cytokeratin 8 antibody was raised against Human
Immunogen:	KRT8 / CK8 / Cytokeratin 8 antibody was raised against peptide derived from C-terminal region of human cytokeratin 8.
Specificity:	Human Cytokeratin 8
Epitope:	C-Terminus
Reactivity:	Human
Purification:	Purified
Presentation:	20 mM Tris-HCl, pH 8.0, 20 mg/ml BSA, 0.05% sodium azide
Recommended Storage:	Store at -20°C. Aliquot to avoid freeze/thaw cycles.
Usage Summary:	Immunohistochemistry: LS-B3915 was validated for use in immunohistochemistry on a panel of 21 formalin-fixed, paraffin-embedded (FFPE) human tissues after heat induced antigen retrieval in pH 6.0 citrate buffer. After incubation with the primary antibody, slides were incubated with biotinylated secondary antibody, followed by alkaline phosphatase-streptavidin and chromogen. The stained slides were evaluated by a pathologist to confirm staining specificity. The optimal working dilution for LS-B3915 was determined to be 1:50.
Uses:	IHC - Paraffin (1:25 - 1:100), IHC - Frozen (1:100 - 1:200) (Optimal dilution to be determined by the researcher)
Size:	125 µl

Immunohistochemistry Image:



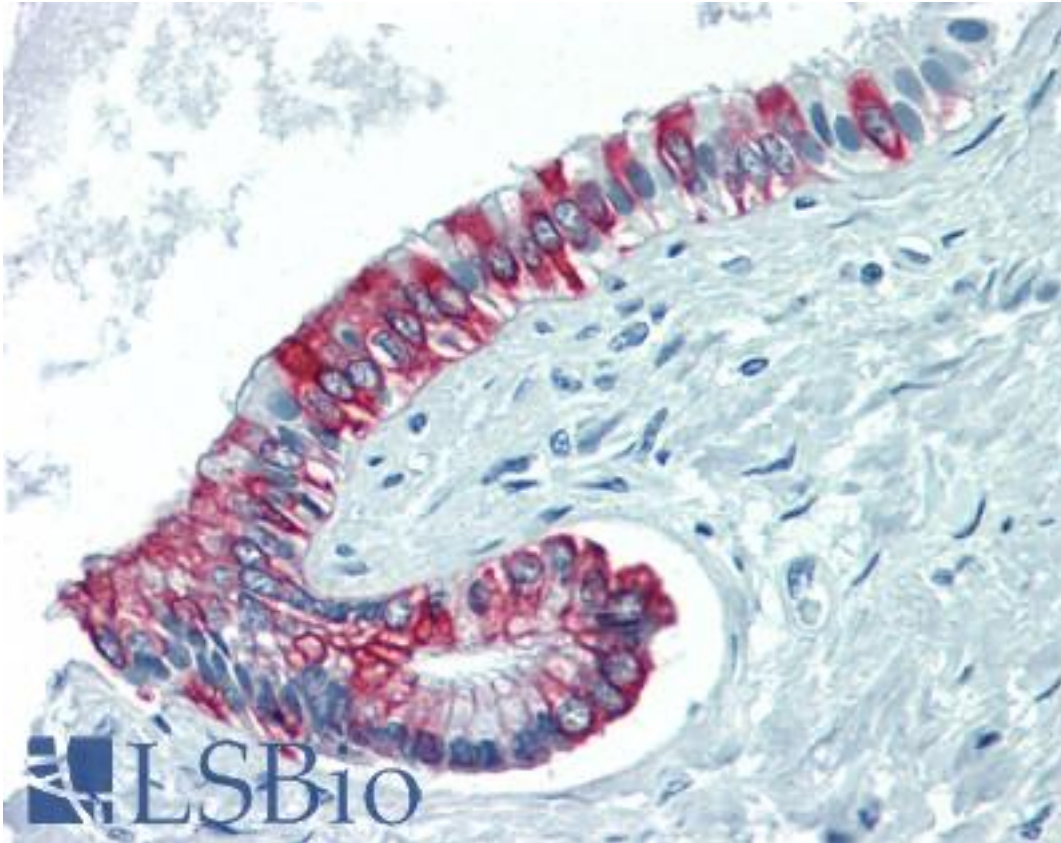
Anti-KRT8 / Cytokeratin 8 antibody IHC of human liver. Immunohistochemistry of formalin-fixed, paraffin-embedded tissue after heat-induced antigen retrieval. Antibody LS-B3915 dilution 1:25.

Immunohistochemistry Image:



Anti-KRT8 / Cytokeratin 8 antibody IHC of human liver, bile duct. Immunohistochemistry of formalin-fixed, paraffin-embedded tissue after heat-induced antigen retrieval. Antibody LS-B3915 dilution 1:25.

Immunohistochemistry Image:



Anti-KRT8 / Cytokeratin 8 antibody IHC of human pancreas, duct. Immunohistochemistry of formalin-fixed, paraffin-embedded tissue after heat-induced antigen retrieval. Antibody LS-B3915 dilution 1:25.

Requested From:

Japan

Laboratory Reagent For In Vitro Research Use Only

Not for resale without prior written consent from LifeSpan BioSciences, Inc.

Created on 9/23/2014

© 2014 LifeSpan BioSciences