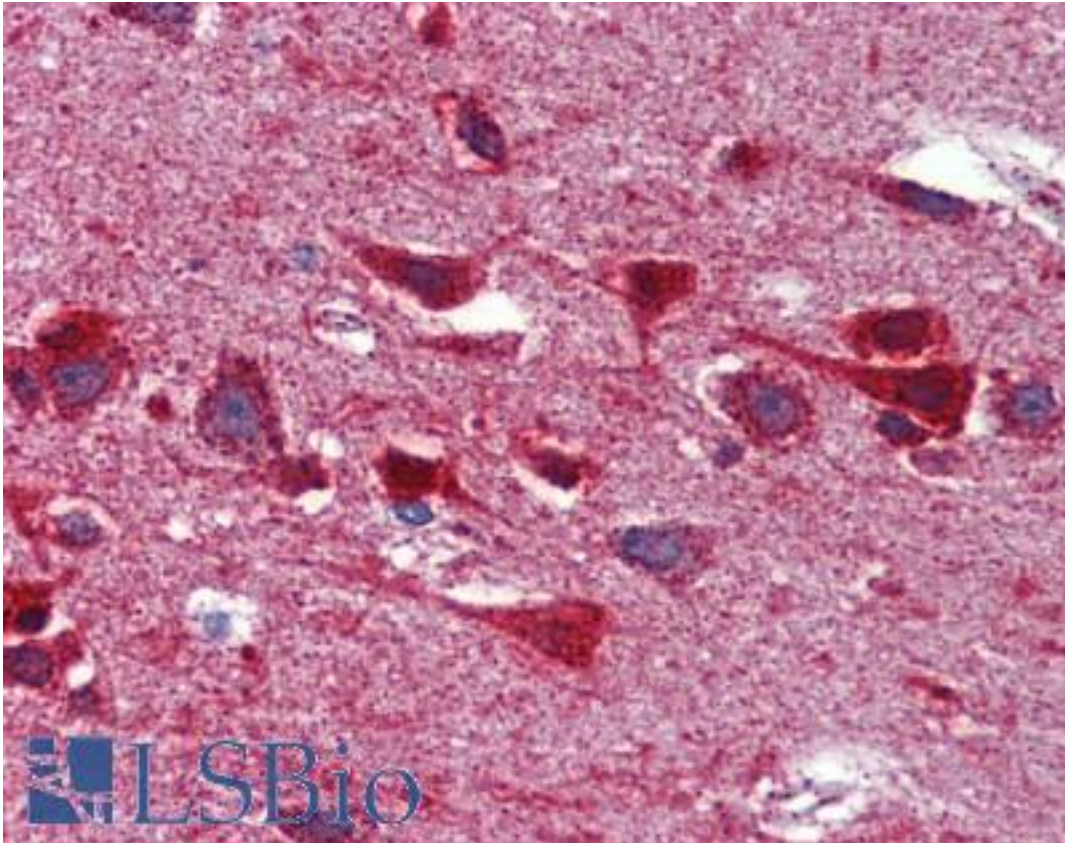


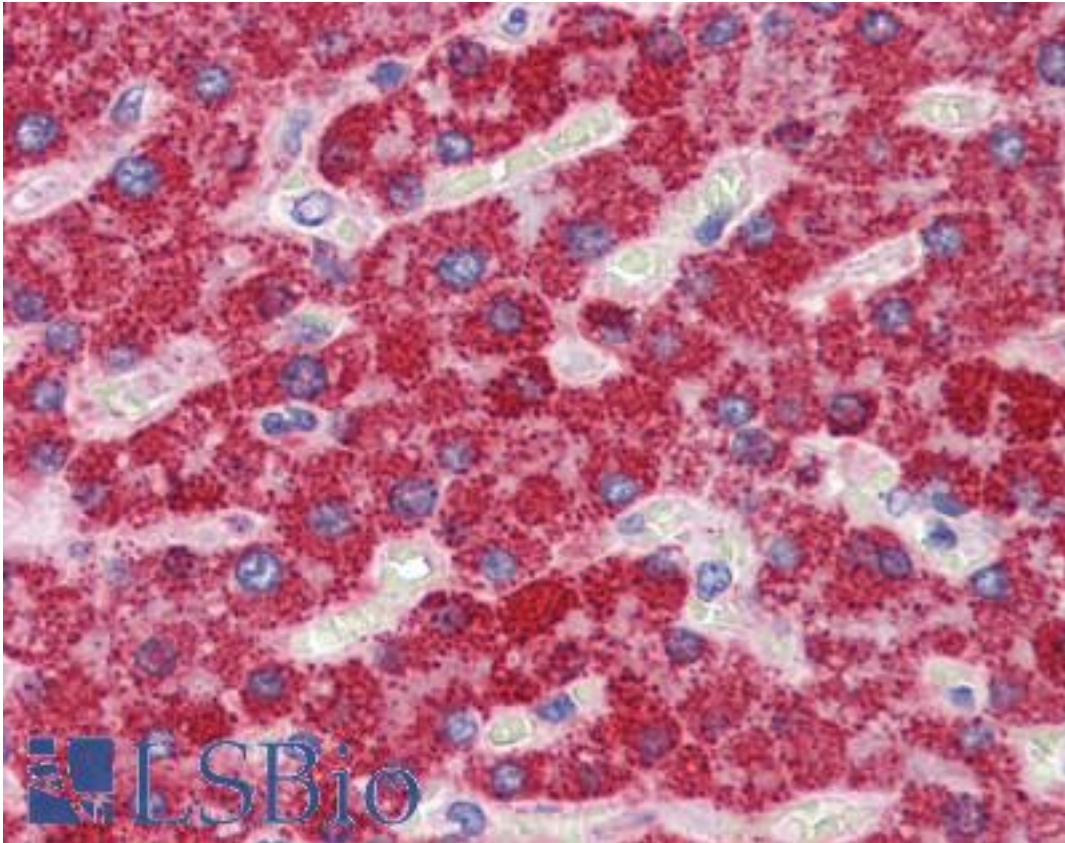
GOT2 Mouse anti-Human Monoclonal (3E9) Antibody - LS-B3906 - LSBio	
CatalogID:	LS-B3906
Validation:	This antibody replaces catalog number LS-C108821. It has been validated for use in the following assays: IHC-P.
Target:	glutamic-oxaloacetic transaminase 2, mitochondrial (GOT2)
Synonyms:	GOT2 Antibody, FABP-1 Antibody, MitAAT Antibody, Transaminase A Antibody, FABPpm Antibody, Fatty acid-binding protein Antibody, KAT4 Antibody, KATIV Antibody, Kynurenine aminotransferase IV Antibody, MAspAT Antibody
Host	GOT2 antibody was produced in Mouse
Clonality:	Monoclonal
Isotype:	IgG1
Clone Name:	3E9
Immunogen Species:	GOT2 antibody was raised against Human
Antigen Type:	Recombinant protein
Immunogen:	GOT2 antibody was raised against purified recombinant fragment of human GOT2 expressed in E. Coli.
Specificity:	Human GOT2
Reactivity:	Human, Monkey, Mouse, Rat
Purification:	Ascites
Presentation:	Ascites fluid, 0.03% sodium azide
Recommended Storage:	Long term: -20°C; Short term: +4°C. Avoid repeat freeze-thaw cycles.
Usage Summary:	Immunohistochemistry: LS-B3906 was validated for use in immunohistochemistry on a panel of 21 formalin-fixed, paraffin-embedded (FFPE) human tissues after heat induced antigen retrieval in pH 6.0 citrate buffer. After incubation with the primary antibody, slides were incubated with biotinylated secondary antibody, followed by alkaline phosphatase-streptavidin and chromogen. The stained slides were evaluated by a pathologist to confirm staining specificity. The optimal working dilution for LS-B3906 was determined to be 1:200.
Uses:	IHC - Paraffin (1:200), Immunofluorescence (1:200 - 1:1000), Western blot (1:500 - 1:2000), ELISA (1:10000) (Optimal dilution to be determined by the researcher)
Size:	50 µl

Immunohistochemistry Image:



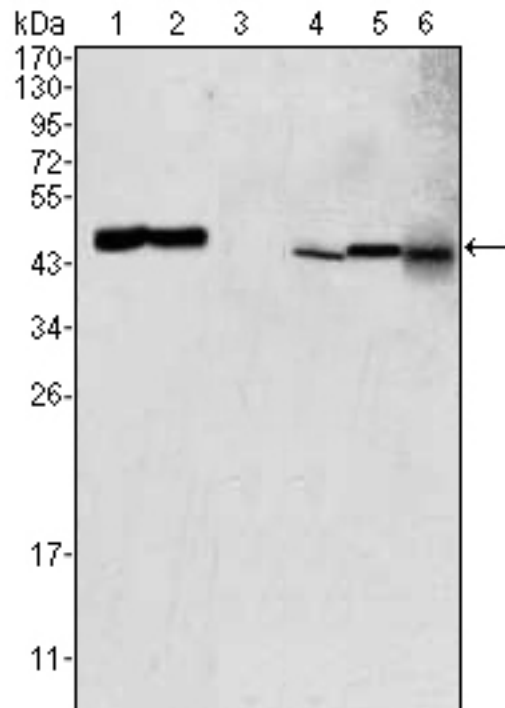
Anti-GOT2 antibody IHC of human brain, cortex. Immunohistochemistry of formalin-fixed, paraffin-embedded tissue after heat-induced antigen retrieval. Antibody LS-B3906 dilution 1:200.

Immunohistochemistry Image:



Anti-GOT2 antibody IHC of human liver. Immunohistochemistry of formalin-fixed, paraffin-embedded tissue after heat-induced antigen retrieval. Antibody LS-B3906 dilution 1:200.

Western Blot Image:



Western blot of GOT2 mouse mAb against HEK293 (1), PC-12 (2), HL-60 (3), BCBL-1 (4), HepG2 (5) and NIH/3T3 (6) cell lysate.

Requested From:

Japan

Laboratory Reagent For In Vitro Research Use Only

Not for resale without prior written consent from LifeSpan BioSciences, Inc.

Created on 9/23/2014

© 2014 LifeSpan BioSciences