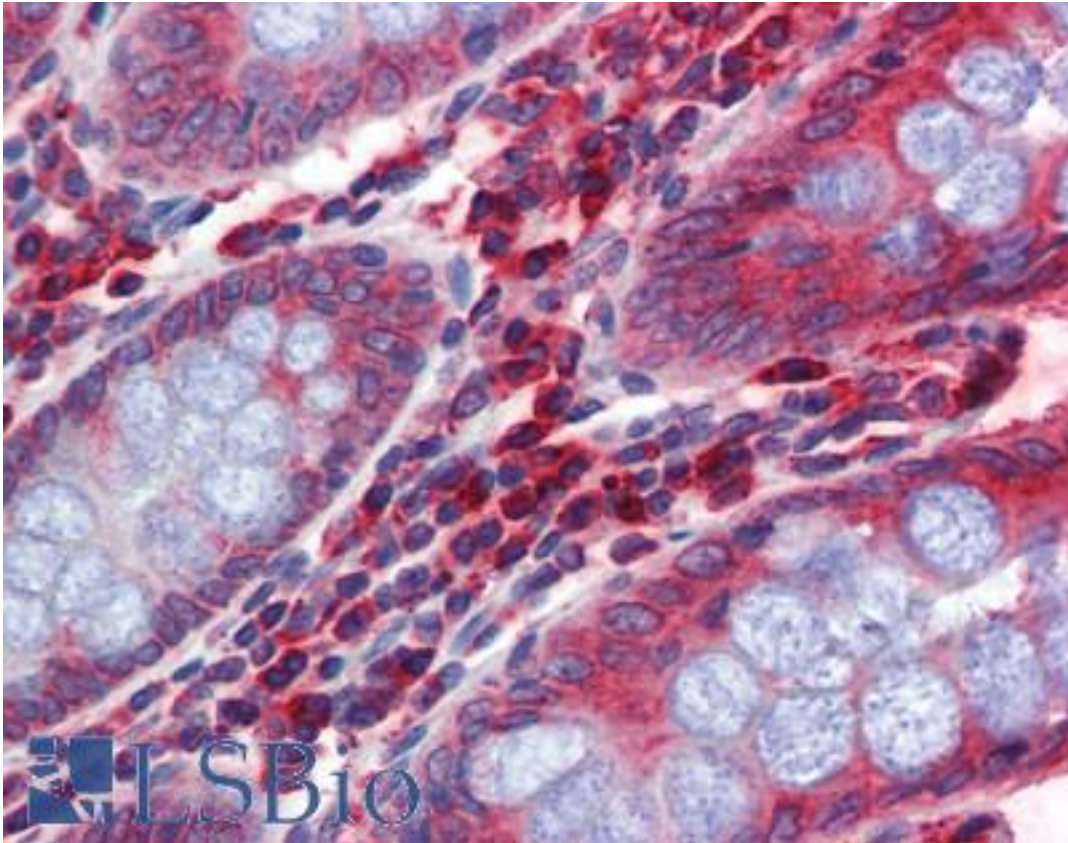


EPHB4 / EPH Receptor B4 Mouse anti-Human Monoclonal (Extracellular) (5B5) Antibody - LS-B3905 - LSBio

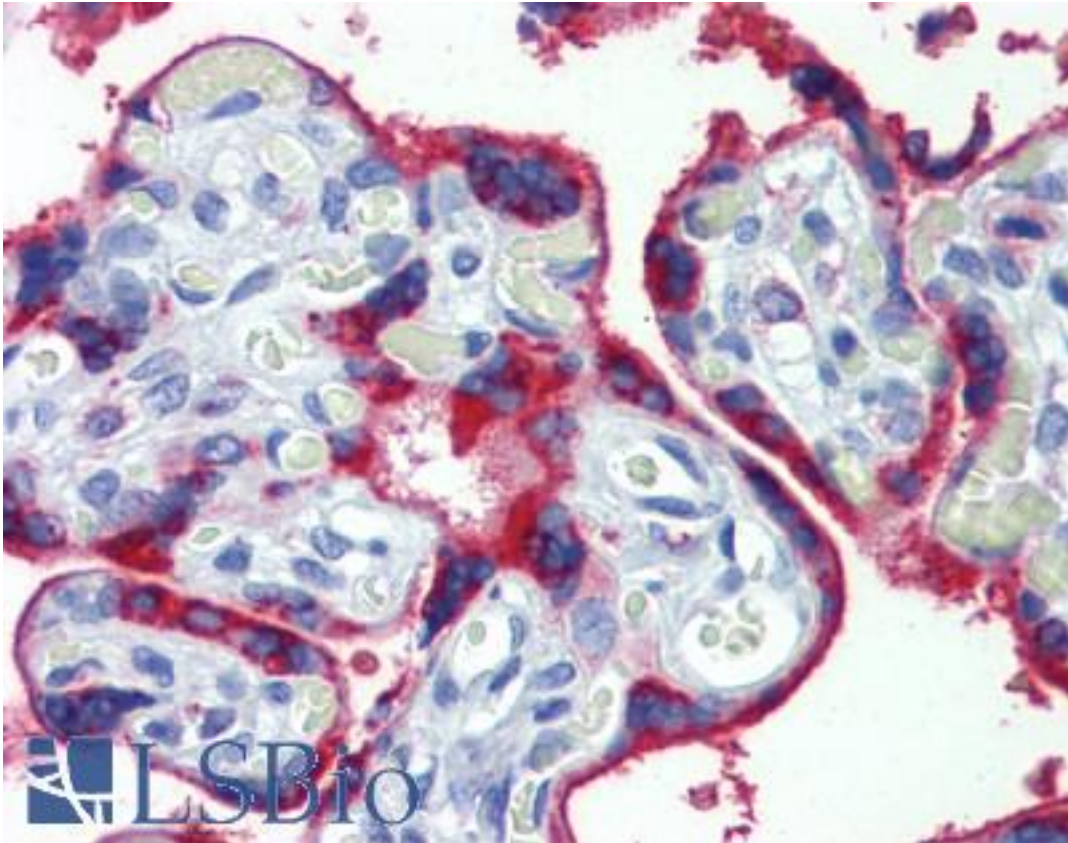
<b>CatalogID:</b>	LS-B3905
<b>Validation:</b>	This antibody replaces catalog number LS-C108805. It has been validated for use in the following assays: IHC-P.
<b>Target:</b>	EPH receptor B4 (EPHB4)
<b>Synonyms:</b>	EPHB4 Antibody, EPH receptor B4 Antibody, Ephrin receptor EphB4 Antibody, Ephrin type-B receptor 4 Antibody, HTK Antibody, MYK1 Antibody, TYRO11 Antibody, Soluble EPHB4 variant 1 Antibody, Soluble EPHB4 variant 3 Antibody, Hepatoma transmembrane kinase Antibody, MDK2 Antibody, Soluble EPHB4 variant 2 Antibody, Tyrosine-protein kinase TYRO11 Antibody
<b>Family / Subfamily:</b>	Protein Kinase / Ephrin Receptor
<b>Host</b>	EPHB4 antibody was produced in Mouse
<b>Clonality:</b>	Monoclonal
<b>Isotype:</b>	IgG1
<b>Clone Name:</b>	5B5
<b>Immunogen Species:</b>	EPHB4 / EPH Receptor B4 antibody was raised against Human
<b>Antigen Type:</b>	Recombinant protein
<b>Immunogen:</b>	EPHB4 / EPH Receptor B4 antibody was raised against purified recombinant extracellular fragment of human EPHB4 fused with hlgGfC tag expressed in HEK293 cell line.
<b>Specificity:</b>	Human EPHB4
<b>Epitope:</b>	Extracellular
<b>Reactivity:</b>	Human
<b>Purification:</b>	Ascites
<b>Presentation:</b>	Ascites fluid, 0.03% sodium azide
<b>Recommended Storage:</b>	Long term: -20°C; Short term: +4°C. Avoid repeat freeze-thaw cycles.
<b>Usage Summary:</b>	Immunohistochemistry: LS-B3905 was validated for use in immunohistochemistry on a panel of 21 formalin-fixed, paraffin-embedded (FFPE) human tissues after heat induced antigen retrieval in pH 6.0 citrate buffer. After incubation with the primary antibody, slides were incubated with biotinylated secondary antibody, followed by alkaline phosphatase-streptavidin and chromogen. The stained slides were evaluated by a pathologist to confirm staining specificity. The optimal working dilution for LS-B3905 was determined to be 1:200.
<b>Uses:</b>	IHC - Paraffin (1:200), Immunofluorescence (1:200 - 1:1000), Western blot (1:500 - 1:2000), ELISA (1:10000) (Optimal dilution to be determined by the researcher)
<b>Size:</b>	50 µl

**Immunohistochemistry Image:**



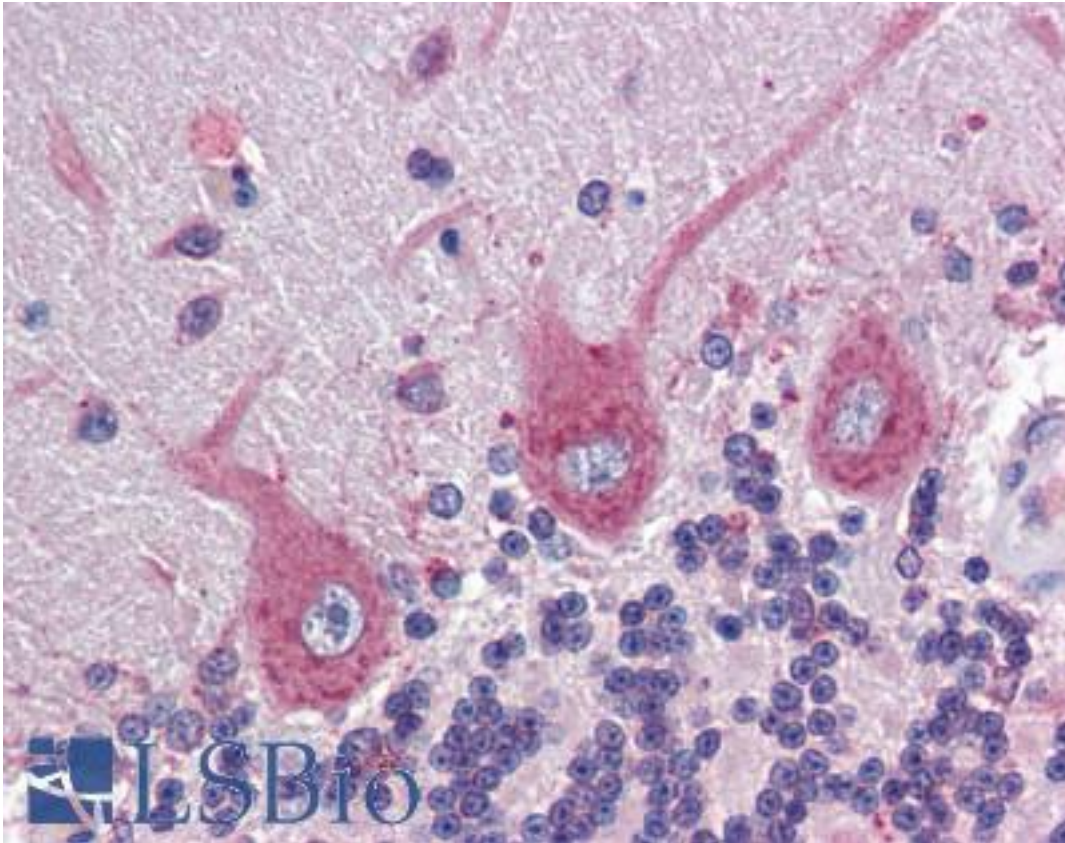
Anti-EPHB4 antibody IHC of human colon. Immunohistochemistry of formalin-fixed, paraffin-embedded tissue after heat-induced antigen retrieval. Antibody LS-B3905 dilution 1:200.

**Immunohistochemistry Image:**



Anti-EPHB4 antibody IHC of human placenta. Immunohistochemistry of formalin-fixed, paraffin-embedded tissue after heat-induced antigen retrieval. Antibody LS-B3905 dilution 1:200.

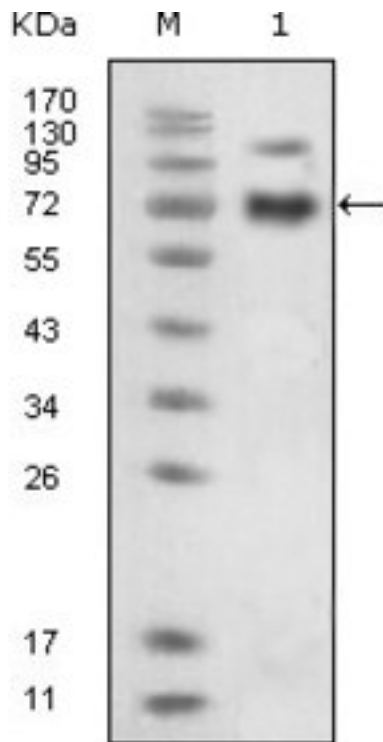
**Immunohistochemistry Image:**



Anti-EPHB4 antibody IHC of human brain, cerebellum. Immunohistochemistry of formalin-fixed, paraffin-embedded tissue after heat-induced antigen retrieval. Antibody LS-B3905 dilution 1:200.



**Western Blot Image:**



Western blot of anti-EphB4 monoclonal antibody against extracellular domain of human EphB4(aa16-539).

**Requested From:**

Japan

Laboratory Reagent For In Vitro Research Use Only

Not for resale without prior written consent from LifeSpan BioSciences, Inc.

Created on 9/23/2014

© 2014 LifeSpan BioSciences