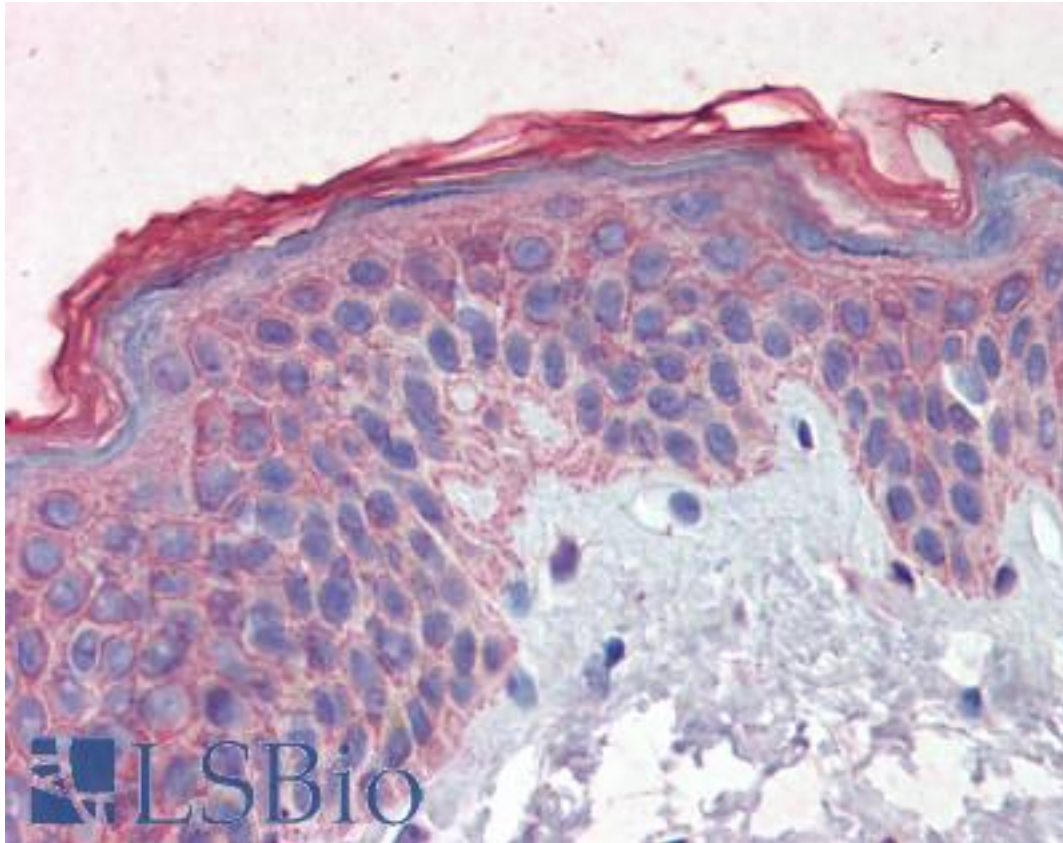


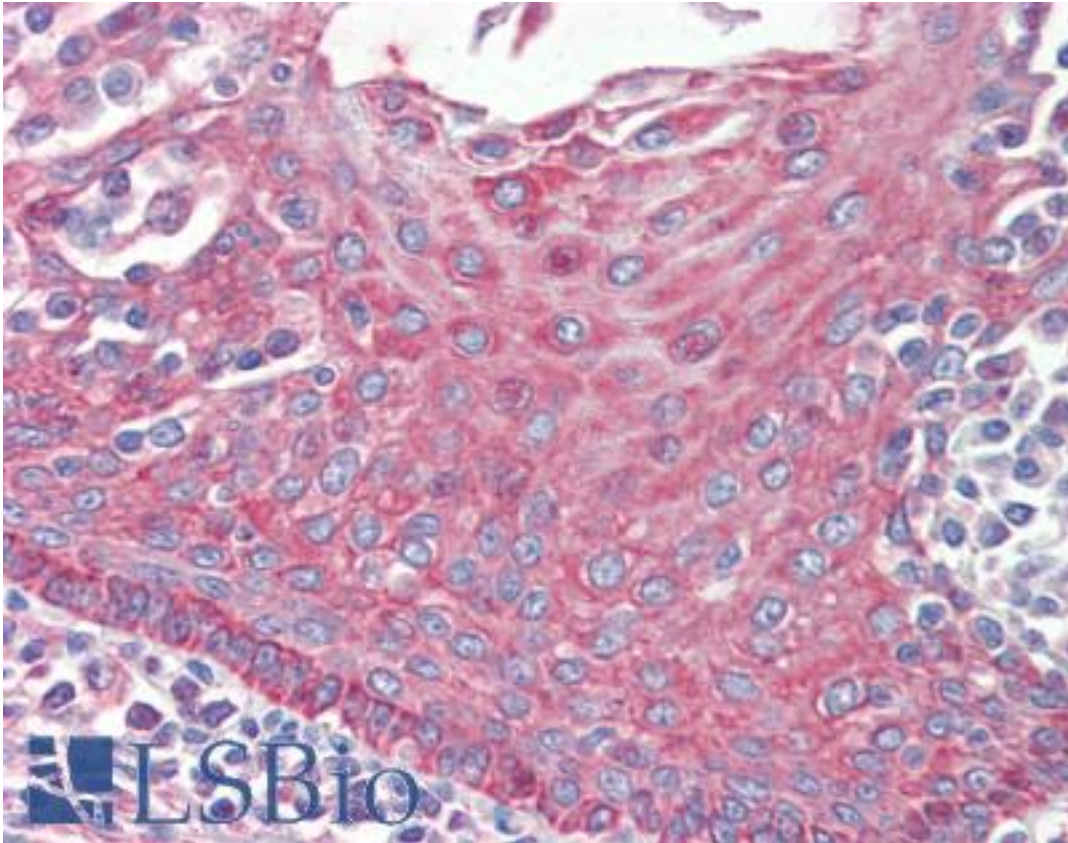
EPHB2 / EPH Receptor B2 Mouse anti-Human Monoclonal (aa17-200) (2D12C6) Antibody - LS-B3904 - LSBio	
<b>CatalogID:</b>	LS-B3904
<b>Validation:</b>	This antibody replaces catalog number LS-C108801. It has been validated for use in the following assays: IHC-P.
<b>Target:</b>	EPH receptor B2 (EPHB2)
<b>Synonyms:</b>	EPHB2 Antibody, CAPB Antibody, Cek5 Antibody, EK5 Antibody, ETECK Antibody, EPH tyrosine kinase 3 Antibody, DRT Antibody, ELK-related tyrosine kinase Antibody, Hek5 Antibody, EPH-like kinase 5 Antibody, EPHT3 Antibody, Nuk Antibody, PCBC Antibody, Tyrosine-protein kinase TYRO5 Antibody, Protein-tyrosine kinase HEK5 Antibody, Tyro5 Antibody, EPH receptor B2 Antibody, Ephrin type-B receptor 2 Antibody, EPTH3 Antibody
<b>Family / Subfamily:</b>	Protein Kinase / Ephrin Receptor
<b>Host</b>	EPHB2 antibody was produced in Mouse
<b>Clonality:</b>	Monoclonal
<b>Isotype:</b>	IgG2b
<b>Clone Name:</b>	2D12C6
<b>Immunogen Species:</b>	EPHB2 / EPH Receptor B2 antibody was raised against Human
<b>Antigen Type:</b>	Recombinant protein
<b>Immunogen:</b>	EPHB2 / EPH Receptor B2 antibody was raised against purified recombinant fragment of EphB2(aa17-200) expressed in E. Coli.
<b>Specificity:</b>	Human EPHB2
<b>Epitope:</b>	aa17-200
<b>Reactivity:</b>	Human
<b>Purification:</b>	Ascites
<b>Presentation:</b>	Ascites fluid, 0.03% sodium azide. Sourced in Ascites.
<b>Recommended Storage:</b>	Long term: -20°C; Short term: +4°C. Avoid repeat freeze-thaw cycles.
<b>Usage Summary:</b>	Immunohistochemistry: LS-B3904 was validated for use in immunohistochemistry on a panel of 21 formalin-fixed, paraffin-embedded (FFPE) human tissues after heat induced antigen retrieval in pH 6.0 citrate buffer. After incubation with the primary antibody, slides were incubated with biotinylated secondary antibody, followed by alkaline phosphatase-streptavidin and chromogen. The stained slides were evaluated by a pathologist to confirm staining specificity. The optimal working dilution for LS-B3904 was determined to be 1:200.
<b>Uses:</b>	IHC - Paraffin (1:200 - 1:400), Immunofluorescence (1:200 - 1:1000), Western blot (1:500 - 1:2000), ELISA (1:10000) (Optimal dilution to be determined by the researcher)
<b>Size:</b>	50 µl

**Immunohistochemistry Image:**



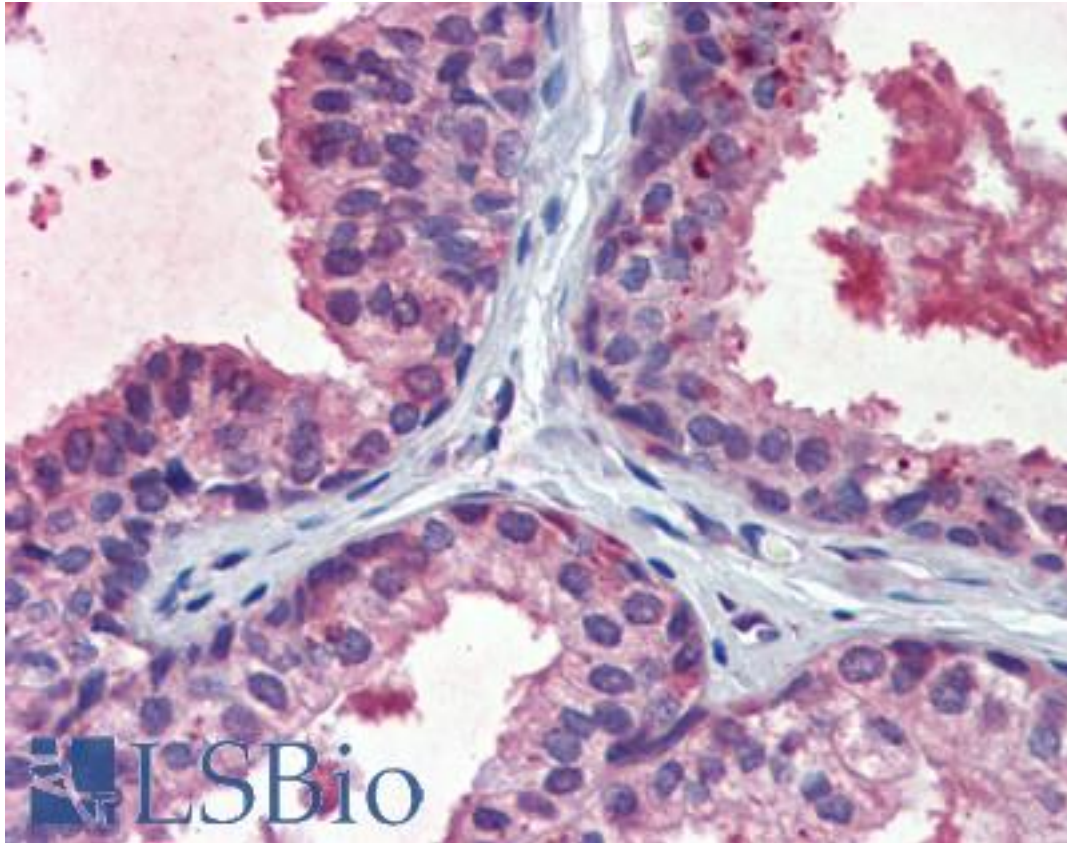
Anti-EPHB2 antibody IHC of human skin. Immunohistochemistry of formalin-fixed, paraffin-embedded tissue after heat-induced antigen retrieval. Antibody LS-B3904 dilution 1:200.

**Immunohistochemistry Image:**



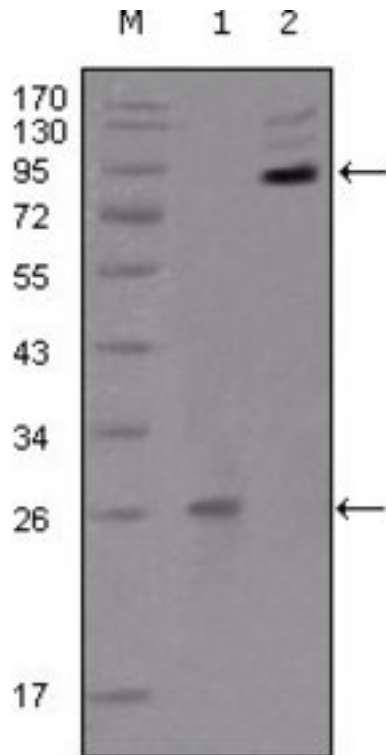
Anti-EPHB2 antibody IHC of human tonsil. Immunohistochemistry of formalin-fixed, paraffin-embedded tissue after heat-induced antigen retrieval. Antibody LS-B3904 dilution 1:200.

**Immunohistochemistry Image:**



Anti-EPHB2 antibody IHC of human prostate. Immunohistochemistry of formalin-fixed, paraffin-embedded tissue after heat-induced antigen retrieval. Antibody LS-B3904 dilution 1:200.

**Western Blot Image:**



Western blot of anti-EphB2 monoclonal antibody against truncated EphB2 recombinant protein(1) and extracellular EphB2(aa19-476)-hlgGFc transfected CHO-K1 cell lysate(2).

**Requested From:**

Japan

Laboratory Reagent For In Vitro Research Use Only

Not for resale without prior written consent from LifeSpan BioSciences, Inc.

Created on 9/23/2014

© 2014 LifeSpan BioSciences