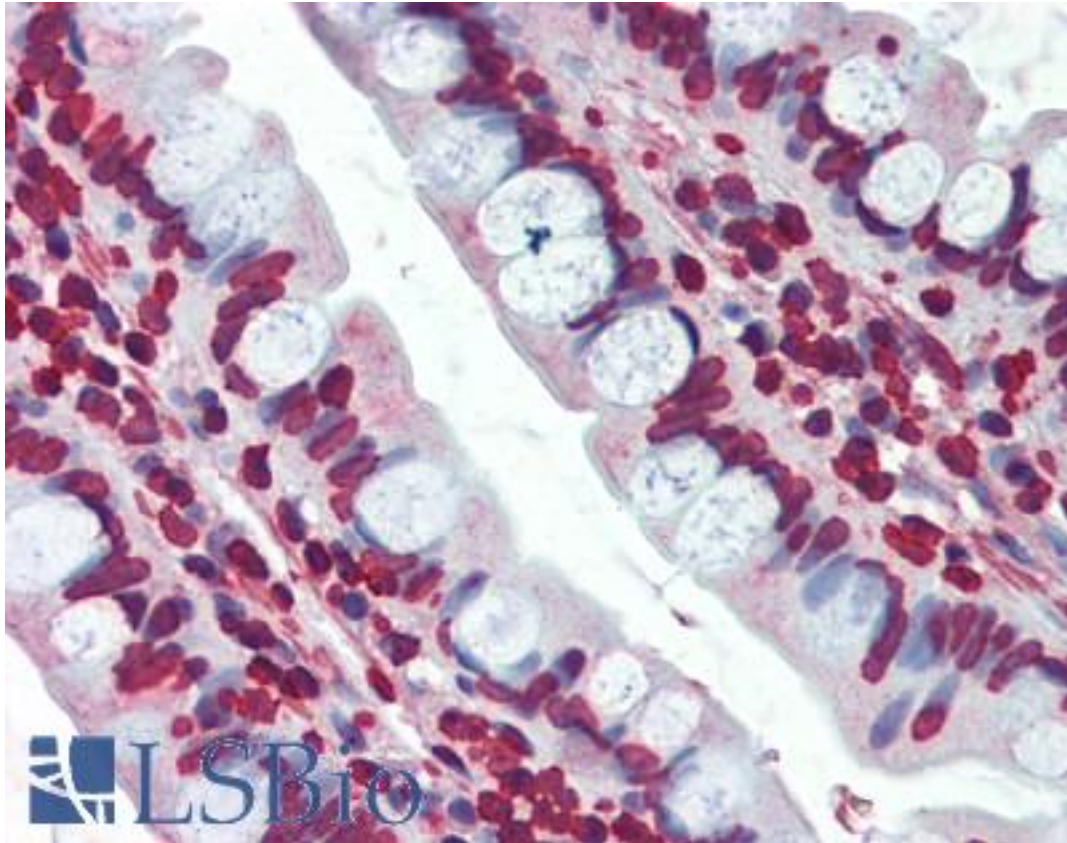


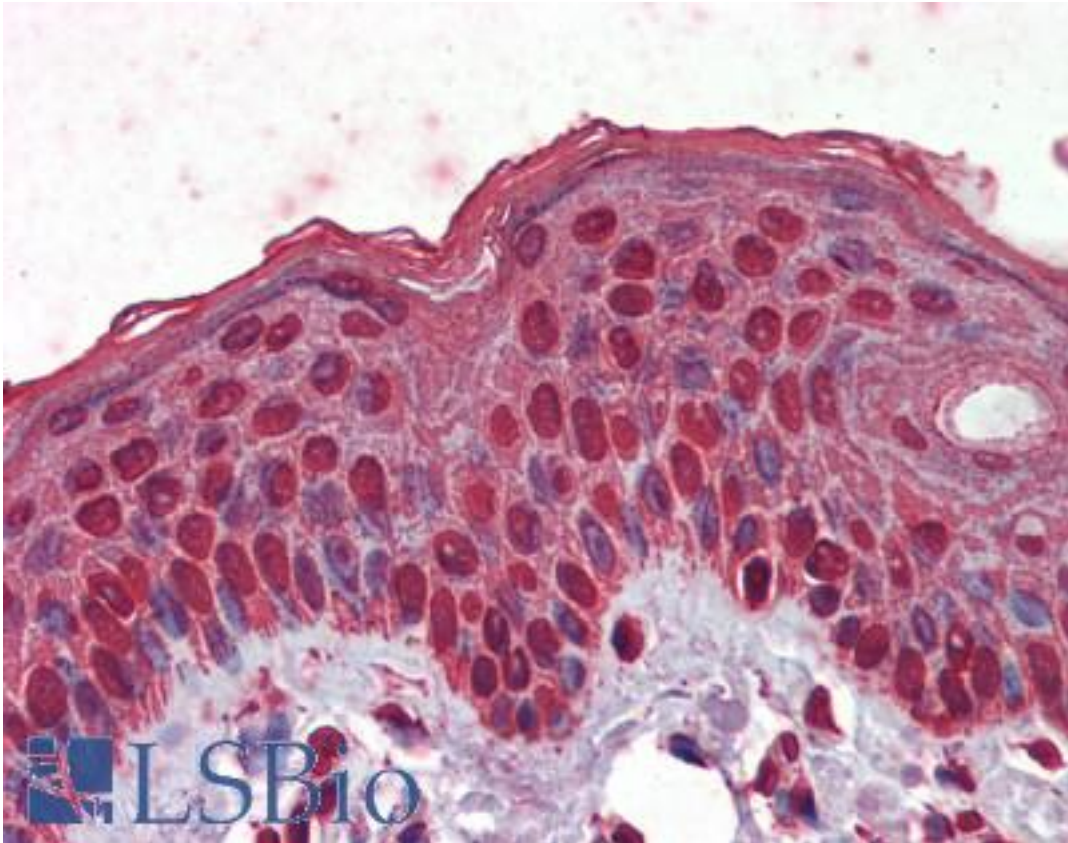
EPHA2 / EPH Receptor A2 Mouse anti-Human Monoclonal (1B3C7) Antibody - LS-B3903 - LSBio	
CatalogID:	LS-B3903
Validation:	This antibody replaces catalog number LS-C108798. It has been validated for use in the following assays: IHC-P.
Target:	EPH receptor A2 (EPHA2)
Synonyms:	EPHA2 Antibody, CTPA Antibody, EPH receptor A2 Antibody, Ephrin type-A receptor 2 Antibody, Epithelial cell kinase Antibody, ECK Antibody, Sek-2 Antibody, ARCC2 Antibody, Soluble EPHA2 variant 1 Antibody, CTPP1 Antibody
Family / Subfamily:	Protein Kinase / Ephrin Receptor
Host	EPHA2 antibody was produced in Mouse
Clonality:	Monoclonal
Isotype:	IgM
Clone Name:	1B3C7
Immunogen Species:	EPHA2 / EPH Receptor A2 antibody was raised against Human
Antigen Type:	Recombinant protein
Immunogen:	EPHA2 / EPH Receptor A2 antibody was raised against purified recombinant fragment of EphA2 expressed in E. Coli.
Specificity:	Human EPHA2
Reactivity:	Human
Purification:	Ascites
Presentation:	Ascites fluid, 0.03% sodium azide
Recommended Storage:	Long term: -20°C; Short term: +4°C. Avoid repeat freeze-thaw cycles.
Usage Summary:	Immunohistochemistry: LS-B3903 was validated for use in immunohistochemistry on a panel of 21 formalin-fixed, paraffin-embedded (FFPE) human tissues after heat induced antigen retrieval in pH 6.0 citrate buffer. After incubation with the primary antibody, slides were incubated with biotinylated secondary antibody, followed by alkaline phosphatase-streptavidin and chromogen. The stained slides were evaluated by a pathologist to confirm staining specificity. The optimal working dilution for LS-B3903 was determined to be 1:200.
Uses:	IHC - Paraffin (1:200 - 1:400), Western blot (1:500 - 1:2000), ELISA (1:10000) (Optimal dilution to be determined by the researcher)
Size:	50 µl

Immunohistochemistry Image:



Anti-EPHA2 antibody IHC of human small intestine. Immunohistochemistry of formalin-fixed, paraffin-embedded tissue after heat-induced antigen retrieval. Antibody LS-B3903 dilution 1:200.

Immunohistochemistry Image:



Anti-EPHA2 antibody IHC of human skin. Immunohistochemistry of formalin-fixed, paraffin-embedded tissue after heat-induced antigen retrieval. Antibody LS-B3903 dilution 1:200.

Western Blot Image:



Western blot of anti-human EphA2 monoclonal antibody against NIH3T3 cell lysate.

Requested From:

Japan

Laboratory Reagent For In Vitro Research Use Only

Not for resale without prior written consent from LifeSpan BioSciences, Inc.

Created on 9/23/2014

© 2014 LifeSpan BioSciences