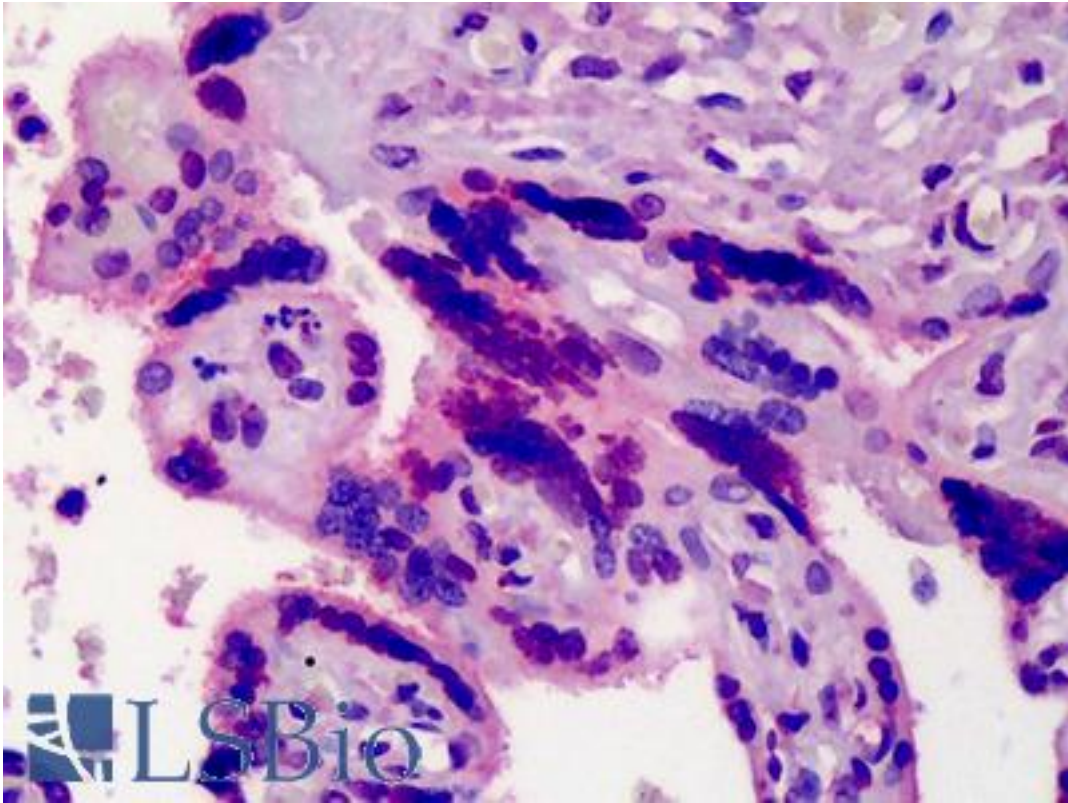


NOS3 / eNOS Mouse anti-Human Monoclonal (6H2) Antibody - LS-B3902 - LSBio

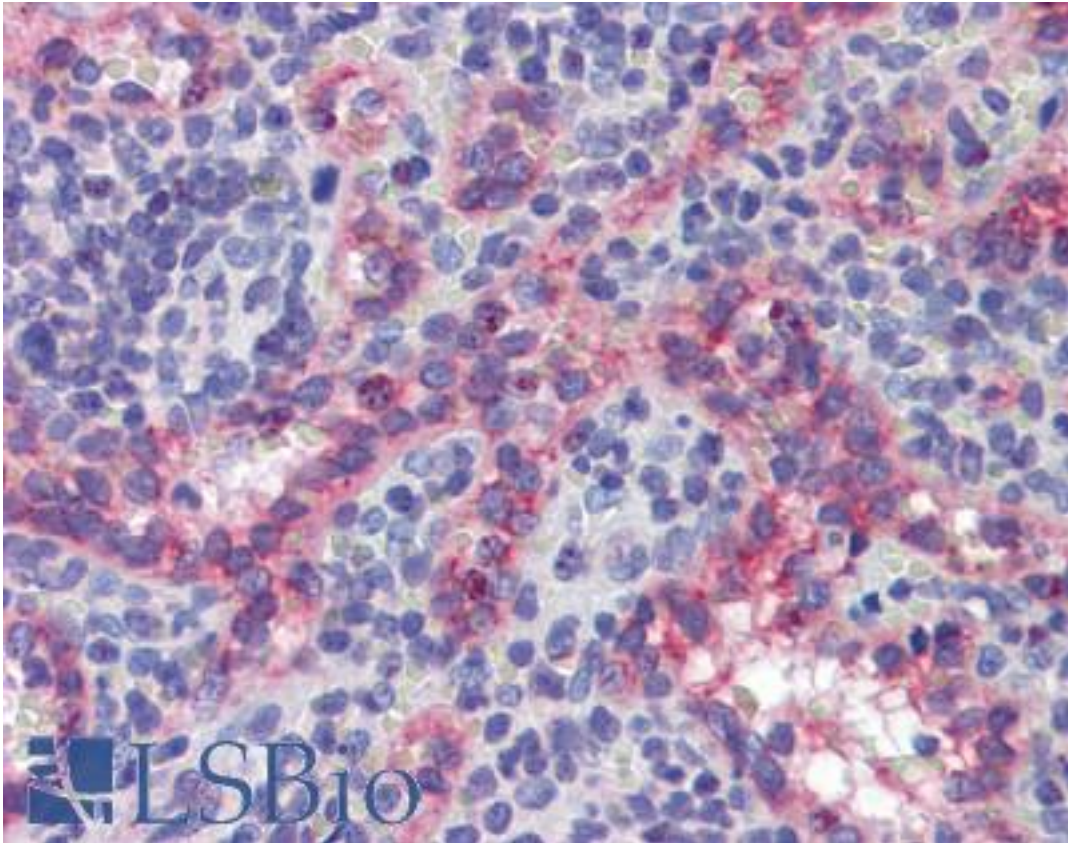
CatalogID:	LS-B3902
Validation:	This antibody replaces catalog number LS-C108797. It has been validated for use in the following assays: IHC-P.
Target:	nitric oxide synthase 3 (endothelial cell) (NOS3)
Synonyms:	NOS3 Antibody, Constitutive NOS Antibody, CNOS Antibody, Endothelial NOS Antibody, ECNOS Antibody, NOS type III Antibody, NOSIII Antibody, EC-NOS Antibody, ENOS Antibody, Nitric oxide synthase 3 Antibody
Host	NOS3 antibody was produced in Mouse
Clonality:	Monoclonal
Isotype:	IgG1
Clone Name:	6H2
Immunogen Species:	NOS3 / eNOS antibody was raised against Human
Antigen Type:	Recombinant protein
Immunogen:	NOS3 / eNOS antibody was raised against purified recombinant fragment of human eNOS expressed in E. Coli.
Specificity:	Human NOS3
Reactivity:	Human
Purification:	Ascites
Presentation:	Ascites fluid, 0.03% sodium azide
Recommended Storage:	Long term: -20°C; Short term: +4°C. Avoid repeat freeze-thaw cycles.
Usage Summary:	Immunohistochemistry: LS-B3902 was validated for use in immunohistochemistry on a panel of 21 formalin-fixed, paraffin-embedded (FFPE) human tissues after heat induced antigen retrieval in pH 6.0 citrate buffer. After incubation with the primary antibody, slides were incubated with biotinylated secondary antibody, followed by alkaline phosphatase-streptavidin and chromogen. The stained slides were evaluated by a pathologist to confirm staining specificity. The optimal working dilution for LS-B3902 was determined to be 1:100.
Uses:	IHC - Paraffin (1:100 - 1:200), ELISA (1:10000) (Optimal dilution to be determined by the researcher)
Size:	50 µl

Immunohistochemistry Image:



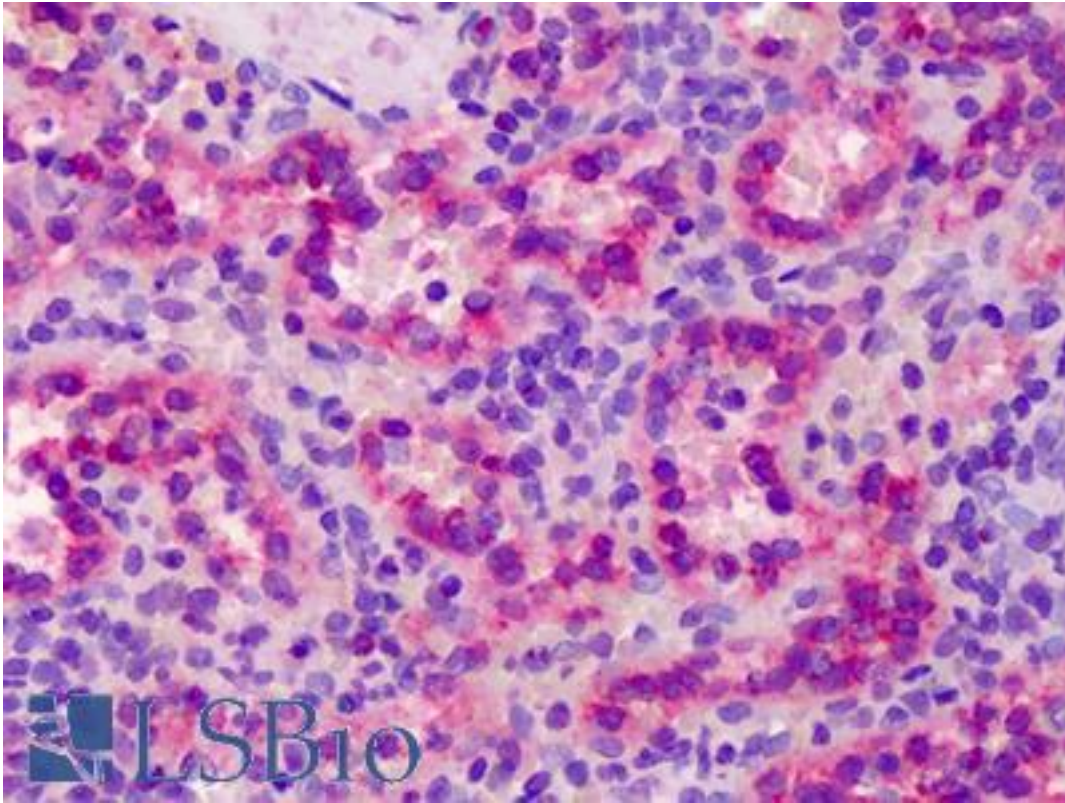
Anti-ENOS antibody IHC of human placenta. Immunohistochemistry of formalin-fixed, paraffin-embedded tissue after heat-induced antigen retrieval. Antibody LS-B3902 dilution 1:100.

Immunohistochemistry Image:



Anti-ENOS antibody IHC of human spleen. Immunohistochemistry of formalin-fixed, paraffin-embedded tissue after heat-induced antigen retrieval. Antibody LS-B3902 dilution 1:100.

Immunohistochemistry Image:



Anti-ENOS antibody IHC of human spleen. Immunohistochemistry of formalin-fixed, paraffin-embedded tissue after heat-induced antigen retrieval. Antibody LS-B3902 dilution 1:100.

Requested From:

Japan

Laboratory Reagent For In Vitro Research Use Only

Not for resale without prior written consent from LifeSpan BioSciences, Inc.

Created on 9/23/2014

© 2014 LifeSpan BioSciences