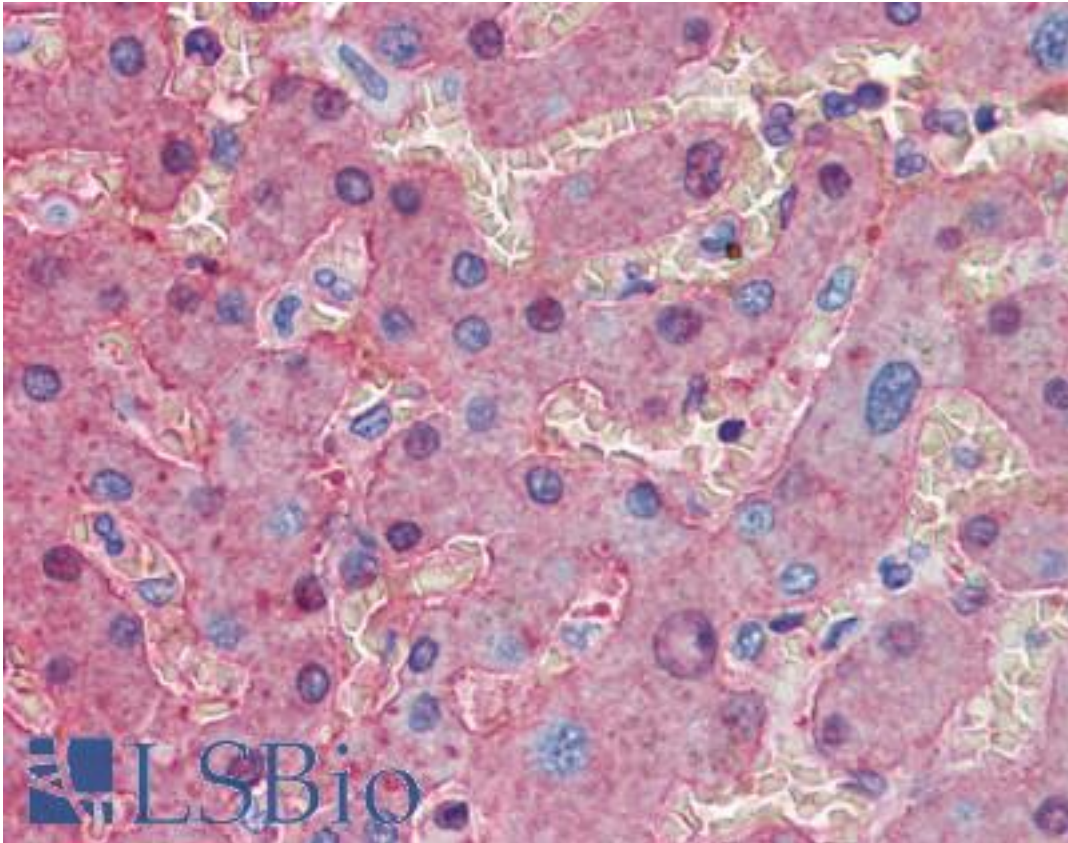


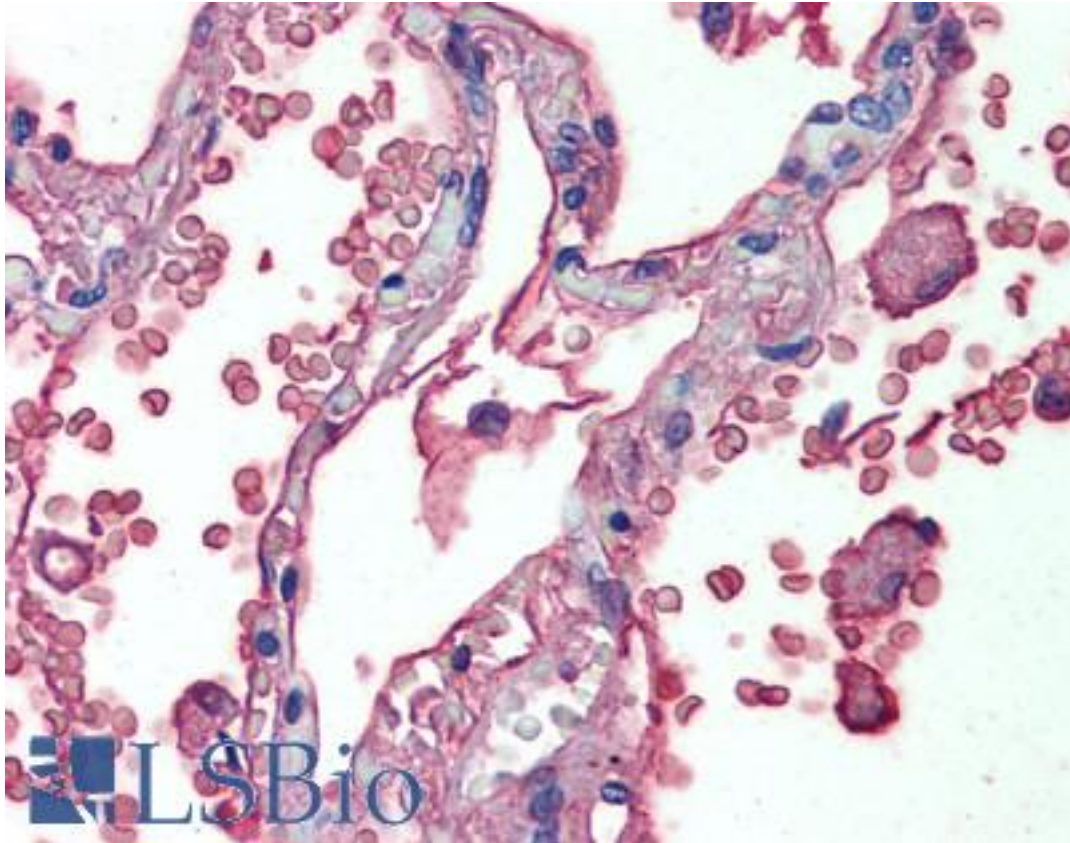
ALB / Serum Albumin Mouse anti-Human Monoclonal (2H3D1;8F6F9) Antibody - LS-B3900 - LSBio	
CatalogID:	LS-B3900
Validation:	This antibody replaces catalog number LS-C108824. It has been validated for use in the following assays: IHC-P.
Target:	albumin
Synonyms:	ALB Antibody, Albumin (32 AA) Antibody, Albumin (AA 34) Antibody, Albumin Antibody, Growth-inhibiting protein 20 Antibody, PRO1341 Antibody, PRO0883 Antibody, Serum albumin Antibody, PRO0903 Antibody
Host	ALB antibody was produced in Mouse
Clonality:	Monoclonal
Isotype:	IgG1
Clone Name:	2H3D1;8F6F9
Immunogen Species:	ALB / Serum Albumin antibody was raised against Human
Immunogen:	ALB / Serum Albumin antibody was raised against human sera albumin.
Specificity:	human albumin
Reactivity:	Human
Purification:	Ascites
Presentation:	Ascites fluid, 0.03% sodium azide
Recommended Storage:	Long term: -20°C; Short term: +4°C. Avoid repeat freeze-thaw cycles.
Usage Summary:	Immunohistochemistry: LS-B3900 was validated for use in immunohistochemistry on a panel of 21 formalin-fixed, paraffin-embedded (FFPE) human tissues after heat induced antigen retrieval in pH 6.0 citrate buffer. After incubation with the primary antibody, slides were incubated with biotinylated secondary antibody, followed by alkaline phosphatase-streptavidin and chromogen. The stained slides were evaluated by a pathologist to confirm staining specificity. The optimal working dilution for LS-B3900 was determined to be 1:200.
Uses:	IHC - Paraffin (1:200), Western blot (1:500 - 1:2000), ELISA (1:10000) (Optimal dilution to be determined by the researcher)
Size:	50 µl

Immunohistochemistry Image:



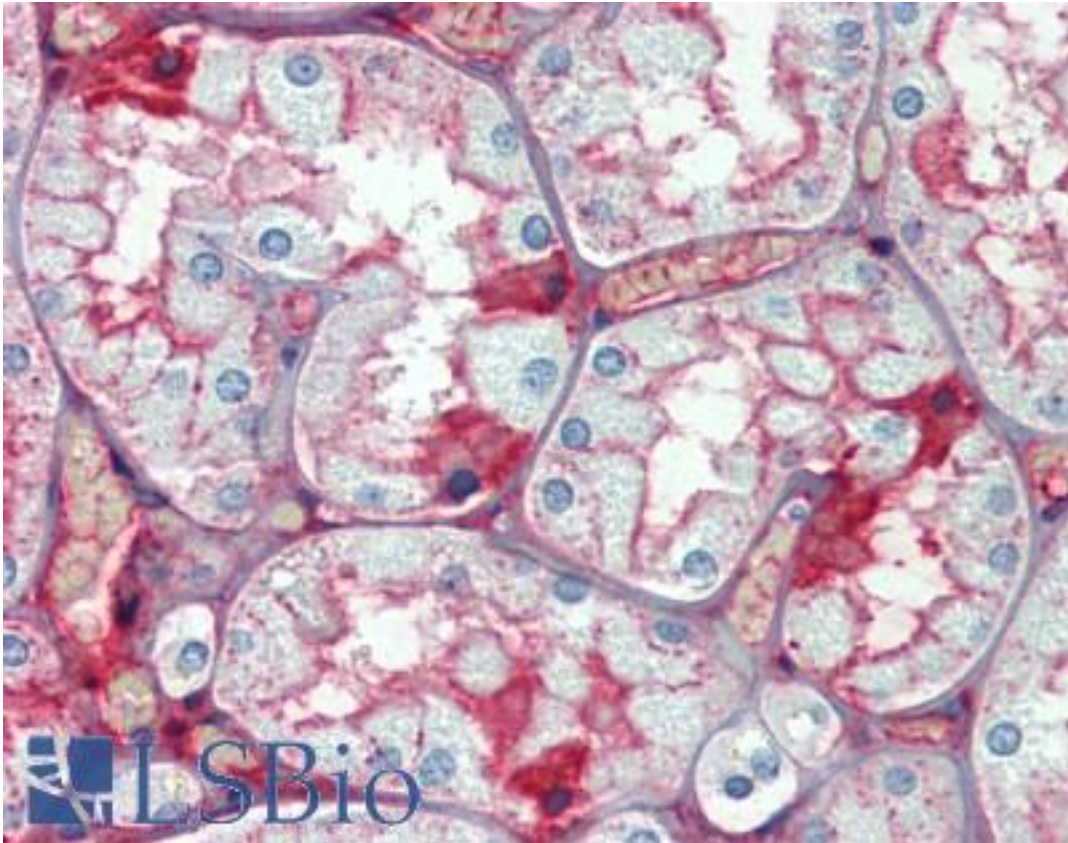
Anti-Serum Albumin antibody IHC of human liver. Immunohistochemistry of formalin-fixed, paraffin-embedded tissue after heat-induced antigen retrieval. Antibody LS-B3900 dilution 1:200.

Immunohistochemistry Image:



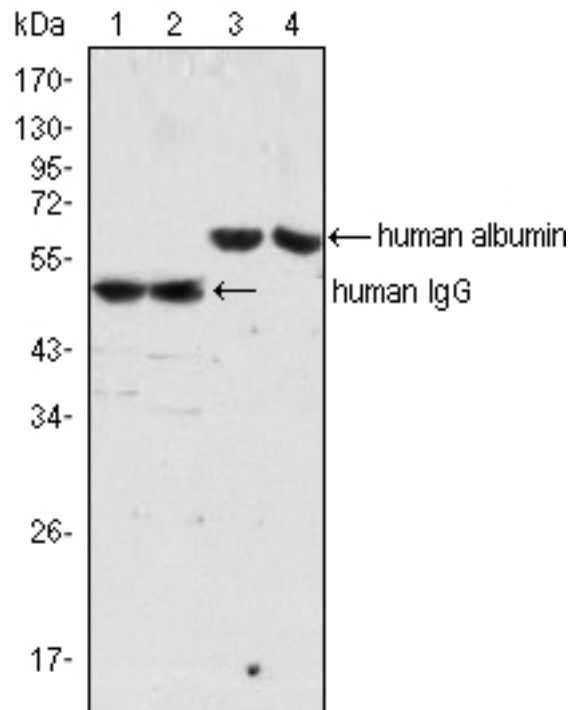
Anti-Serum Albumin antibody IHC of human lung. Immunohistochemistry of formalin-fixed, paraffin-embedded tissue after heat-induced antigen retrieval. Antibody LS-B3900 dilution 1:200.

Immunohistochemistry Image:



Anti-Serum Albumin antibody IHC of human kidney. Immunohistochemistry of formalin-fixed, paraffin-embedded tissue after heat-induced antigen retrieval. Antibody LS-B3900 dilution 1:200.

Western Blot Image:



Western blot of anti-human Albumin mAb (lane 3, 4) and anti-human IgG mAb (lane 1, 2) against human serum (lane 1, 3) and plasma (lane 2, 4).

Requested From:

Japan

Laboratory Reagent For In Vitro Research Use Only

Not for resale without prior written consent from LifeSpan BioSciences, Inc.

Created on 9/23/2014

© 2014 LifeSpan BioSciences