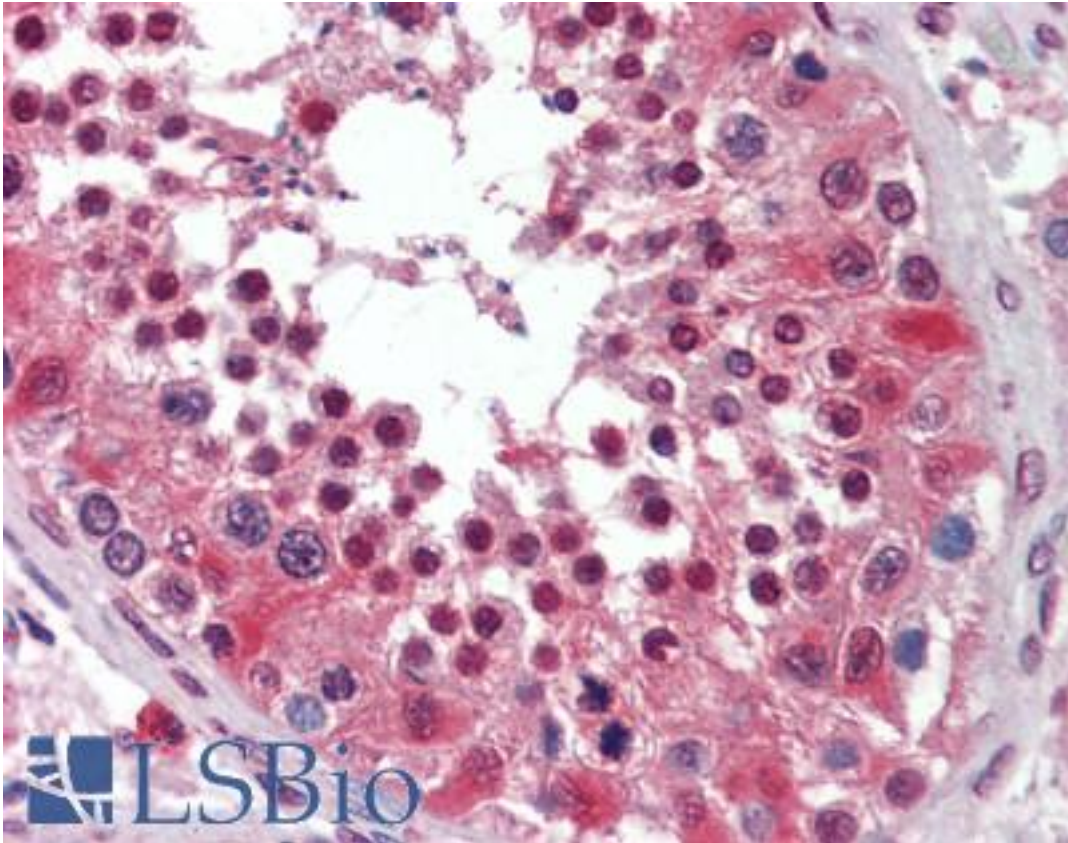


PEA3 / ETV4 Mouse anti-Human Monoclonal (1A2G3) Antibody - LS-B3895 - LSBio

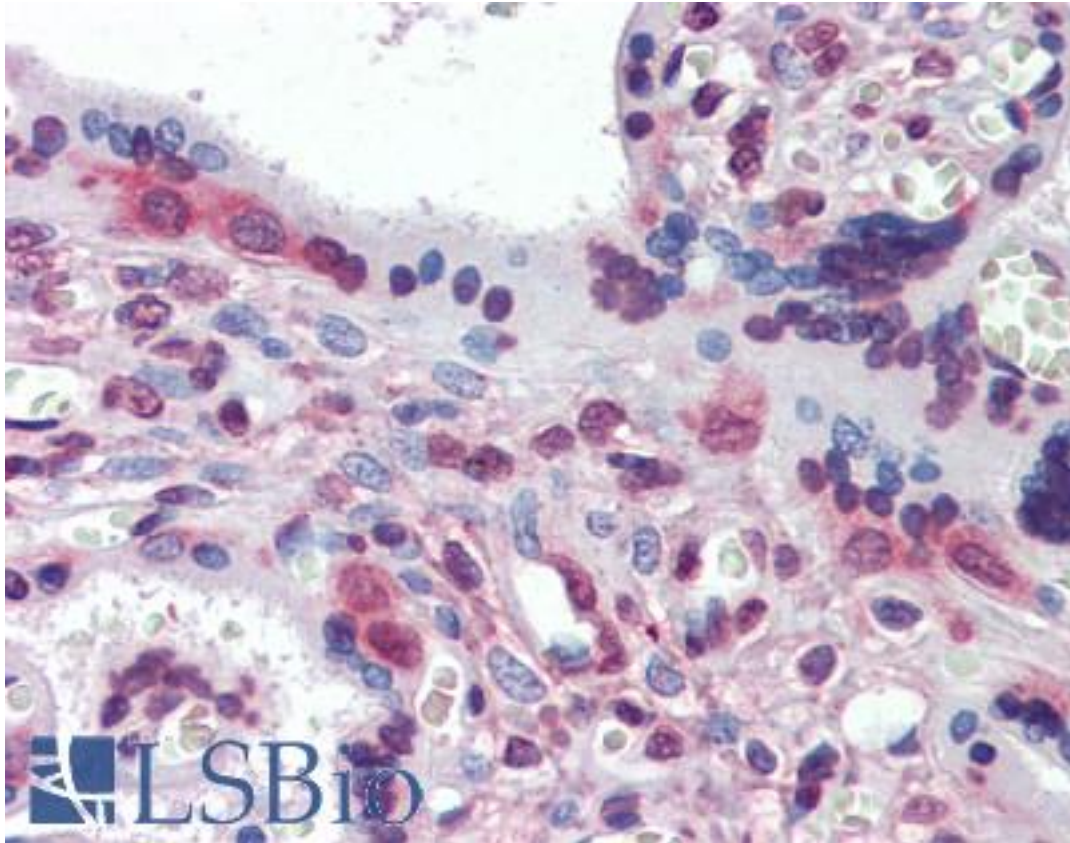
CatalogID:	LS-B3895
Validation:	This antibody replaces catalog number LS-C108868. It has been validated for use in the following assays: IHC-P.
Target:	ets variant 4 (ETV4)
Synonyms:	ETV4 Antibody, ETS translocation variant 4 Antibody, E1A-F Antibody, E1AF Antibody, Ets variant 4 Antibody, PEA3 Antibody, Protein PEA3 Antibody, PEAS3 Antibody
Host	ETV4 antibody was produced in Mouse
Clonality:	Monoclonal
Isotype:	IgG1
Clone Name:	1A2G3
Immunogen Species:	PEA3 / ETV4 antibody was raised against Human
Immunogen:	PEA3 / ETV4 antibody was raised against purified recombinant fragment of human ETV4 (aa50-109) expressed in E. coli.
Specificity:	Human ETV4
Reactivity:	Human
Purification:	Ascites
Presentation:	Ascites fluid, 0.03% sodium azide
Recommended Storage:	Long term: -20°C; Short term: +4°C. Avoid repeat freeze-thaw cycles.
Usage Summary:	Immunohistochemistry: LS-B3895 was validated for use in immunohistochemistry on a panel of 21 formalin-fixed, paraffin-embedded (FFPE) human tissues after heat induced antigen retrieval in pH 6.0 citrate buffer. After incubation with the primary antibody, slides were incubated with biotinylated secondary antibody, followed by alkaline phosphatase-streptavidin and chromogen. The stained slides were evaluated by a pathologist to confirm staining specificity. The optimal working dilution for LS-B3895 was determined to be 1:200.
Uses:	IHC - Paraffin (1:200), Western blot (1:500 - 1:2000), ELISA (1:10000) (Optimal dilution to be determined by the researcher)
Size:	50 µl

Immunohistochemistry Image:



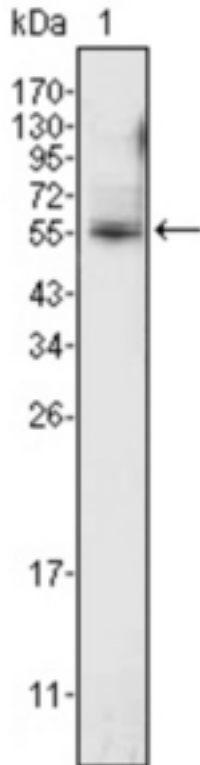
Anti-ETV4 / PEA3 antibody IHC of human testis. Immunohistochemistry of formalin-fixed, paraffin-embedded tissue after heat-induced antigen retrieval. Antibody LS-B3895 dilution 1:200.

Immunohistochemistry Image:



Anti-ETV4 / PEA3 antibody IHC of human placenta. Immunohistochemistry of formalin-fixed, paraffin-embedded tissue after heat-induced antigen retrieval. Antibody LS-B3895 dilution 1:200.

Western Blot Image:



Western blot of anti-ETV4 mAb against K562 cell lysate (1).

Requested From:

Japan

Laboratory Reagent For In Vitro Research Use Only

Not for resale without prior written consent from LifeSpan BioSciences, Inc.

Created on 9/23/2014

© 2014 LifeSpan BioSciences