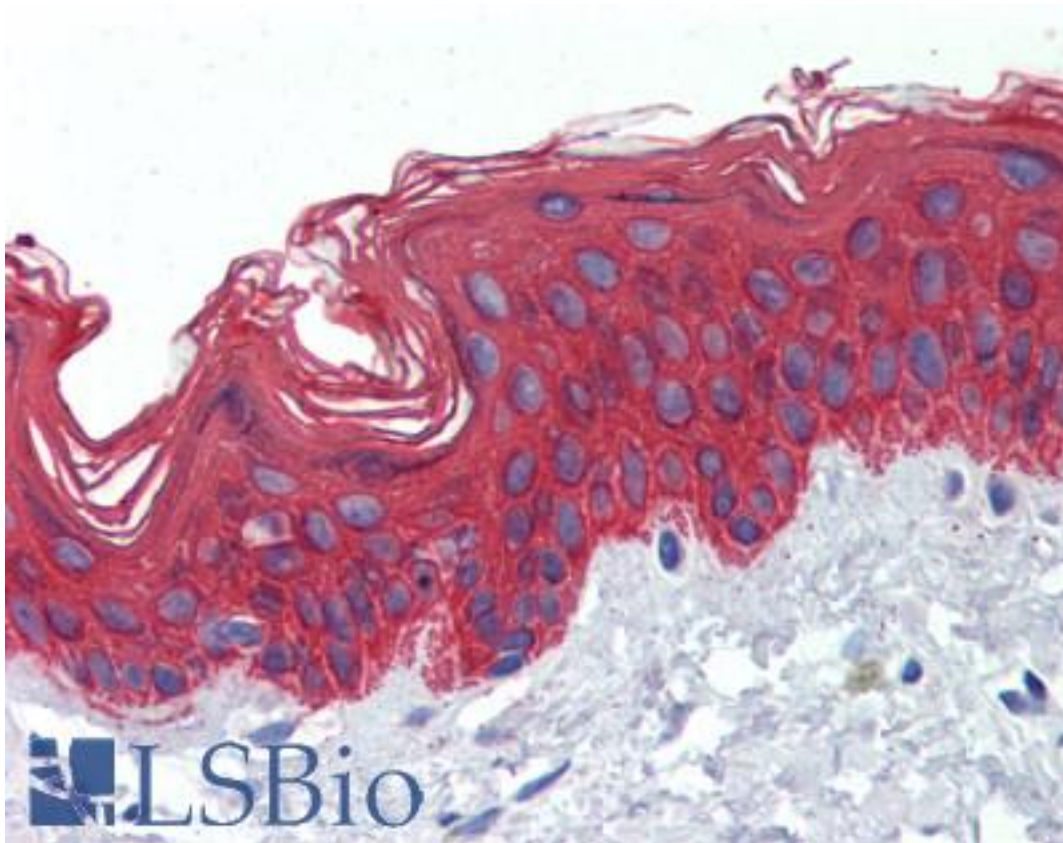


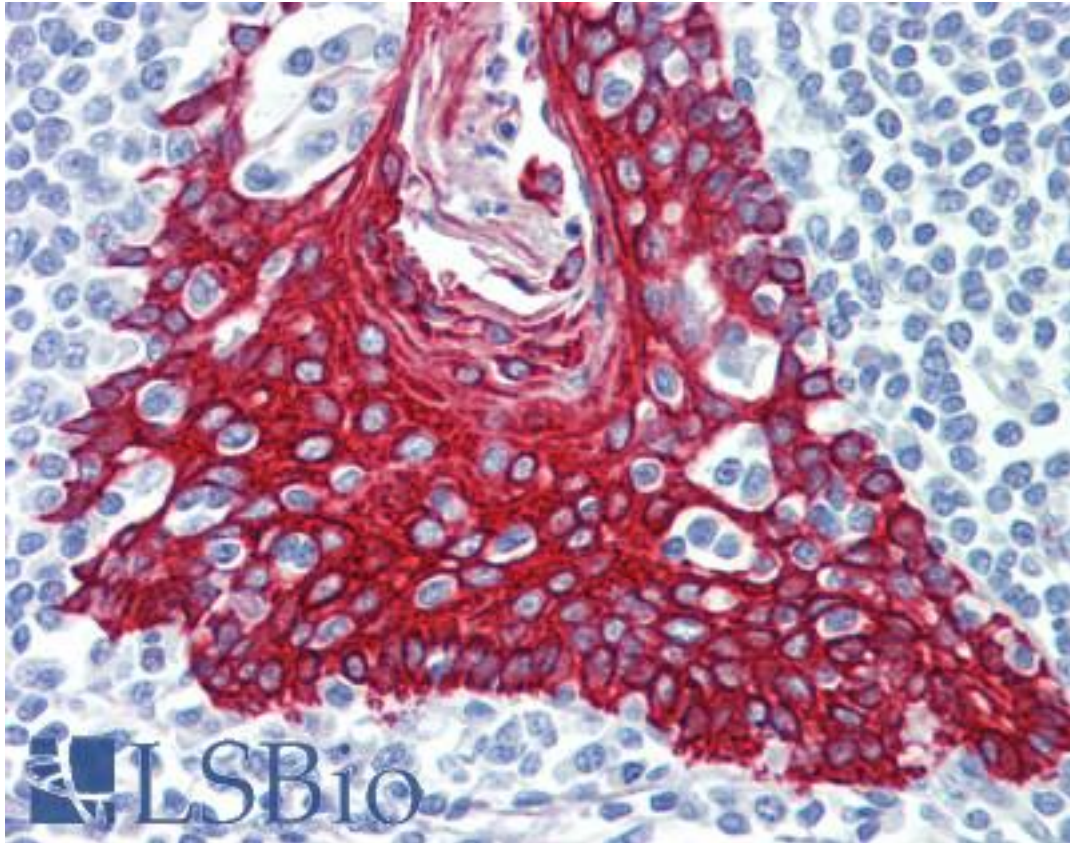
KRT5 / CK5 / Cytokeratin 5 Mouse anti-Human Monoclonal (1E1) Antibody - LS-B3891 - LSBio	
CatalogID:	LS-B3891
Validation:	This antibody replaces catalog number LS-C108789. It has been validated for use in the following assays: IHC-P.
Target:	keratin 5 (KRT5)
Synonyms:	KRT5 Antibody, 58 kd cytokeratin Antibody, 58 kDa cytokeratin Antibody, CK5 Antibody, CK-5 Antibody, Cytokeratin-5 Antibody, DDD Antibody, EBS2 Antibody, Keratin 5 Antibody, KRT5A Antibody, Type-II keratin Kb5 Antibody, Cytokeratin 5 Antibody, K5 Antibody, Keratin-5 Antibody
Family / Subfamily:	Keratin / not assigned-Keratin
Host	KRT5 antibody was produced in Mouse
Clonality:	Monoclonal
Isotype:	IgG1
Clone Name:	1E1
Immunogen Species:	KRT5 / CK5 / Cytokeratin 5 antibody was raised against Human
Antigen Type:	Recombinant protein
Immunogen:	KRT5 / CK5 / Cytokeratin 5 antibody was raised against purified recombinant fragment of Cytokeratin 5 expressed in E. Coli.
Specificity:	Human KRT5
Reactivity:	Human
Purification:	Ascites
Presentation:	Ascites fluid, 0.03% sodium azide
Recommended Storage:	Long term: -20°C; Short term: +4°C. Avoid repeat freeze-thaw cycles.
Usage Summary:	Immunohistochemistry: LS-B3891 was validated for use in immunohistochemistry on a panel of 21 formalin-fixed, paraffin-embedded (FFPE) human tissues after heat induced antigen retrieval in pH 6.0 citrate buffer. After incubation with the primary antibody, slides were incubated with biotinylated secondary antibody, followed by alkaline phosphatase-streptavidin and chromogen. The stained slides were evaluated by a pathologist to confirm staining specificity. The optimal working dilution for LS-B3891 was determined to be 1:200.
Uses:	IHC - Paraffin (1:200 - 1:400), Western blot (1:500 - 1:2000), ELISA (1:10000) (Optimal dilution to be determined by the researcher)
Size:	50 µl

Immunohistochemistry Image:



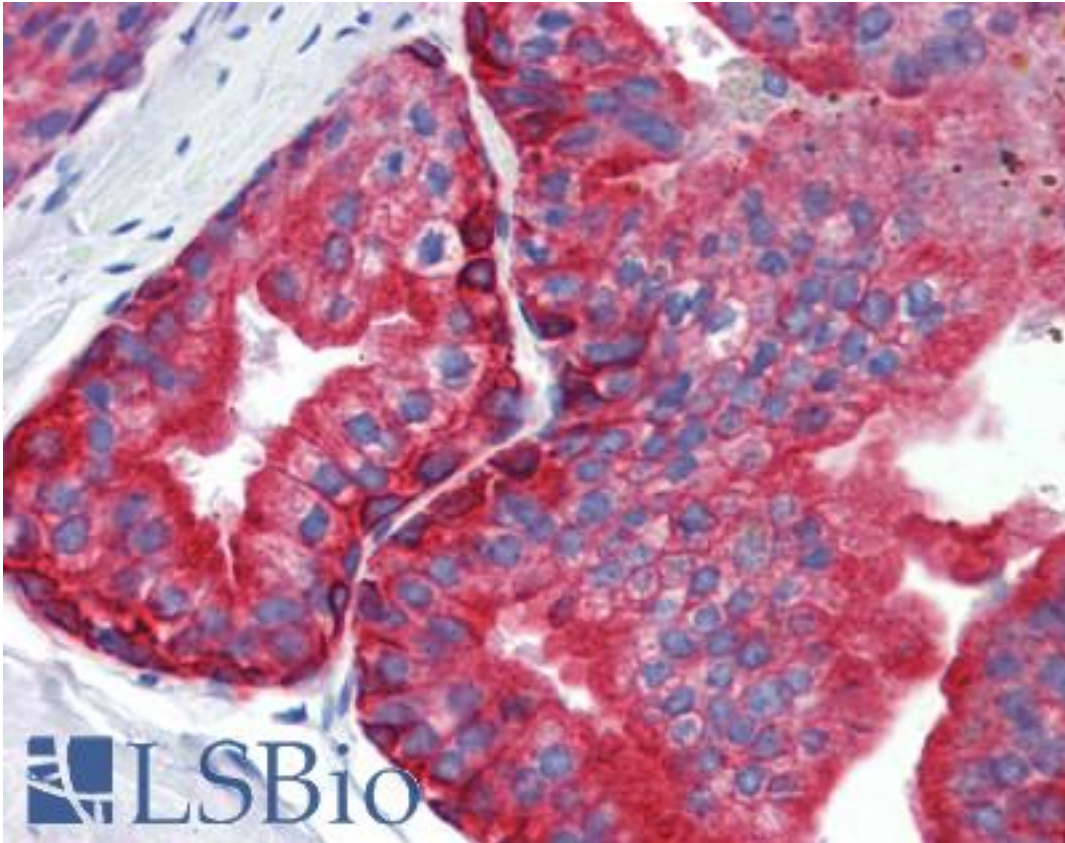
Anti-KRT5 / Cytokeratin 5 antibody IHC of human skin. Immunohistochemistry of formalin-fixed, paraffin-embedded tissue after heat-induced antigen retrieval. Antibody LS-B3891 dilution 1:200.

Immunohistochemistry Image:



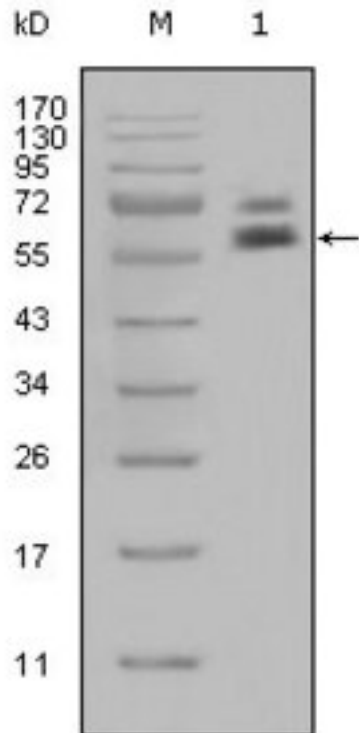
Anti-KRT5 / Cytokeratin 5 antibody IHC of human tonsil. Immunohistochemistry of formalin-fixed, paraffin-embedded tissue after heat-induced antigen retrieval. Antibody LS-B3891 dilution 1:200.

Immunohistochemistry Image:



Anti-KRT5 / Cytokeratin 5 antibody IHC of human prostate. Immunohistochemistry of formalin-fixed, paraffin-embedded tissue after heat-induced antigen retrieval. Antibody LS-B3891 dilution 1:200.

Western Blot Image:



Western blot of anti-CK5 monoclonal antibody against HeLa cell lysate(1).

Requested From:

Japan

Laboratory Reagent For In Vitro Research Use Only

Not for resale without prior written consent from LifeSpan BioSciences, Inc.

Created on 9/23/2014

© 2014 LifeSpan BioSciences