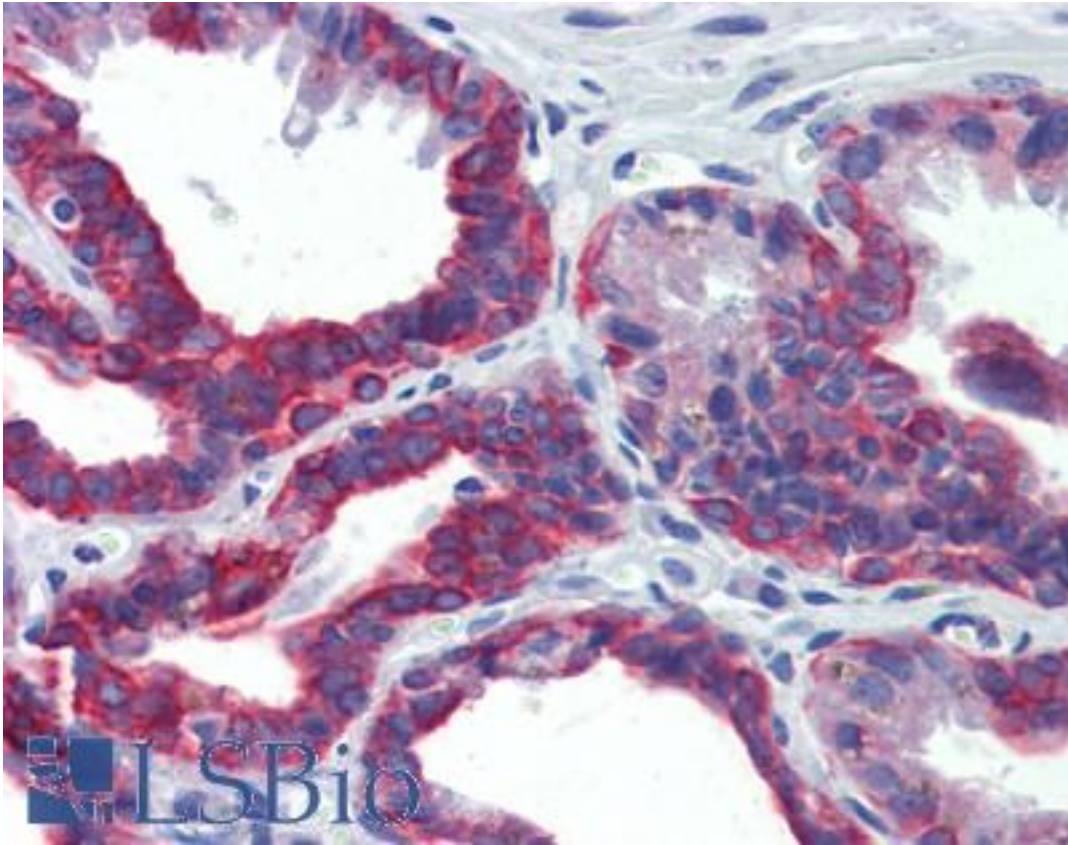


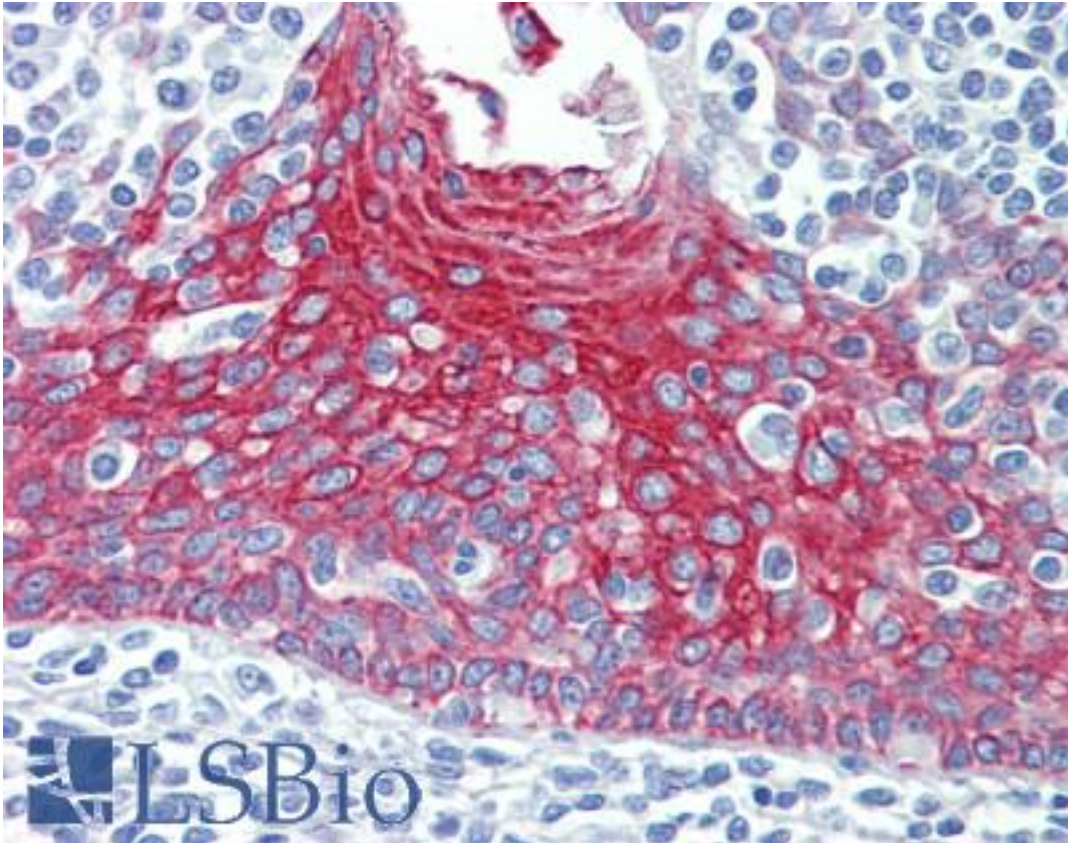
KRT7 / CK7 / Cytokeratin 7 Mouse anti-Human Monoclonal (5D12) Antibody - LS-B3889 - LSBio	
CatalogID:	LS-B3889
Validation:	This antibody replaces catalog number LS-C108785. It has been validated for use in the following assays: IHC-P.
Target:	keratin 7 (KRT7)
Synonyms:	KRT7 Antibody, CK-7 Antibody, Cytokeratin 7 Antibody, CK7 Antibody, K2C7 Antibody, K7 Antibody, Keratin 7 Antibody, Keratin-7 Antibody, SCL Antibody, Type II mesothelial keratin K7 Antibody, Cytokeratin-7 Antibody, Sarcolectin Antibody, Type-II keratin Kb7 Antibody
Host	KRT7 antibody was produced in Mouse
Clonality:	Monoclonal
Isotype:	IgG1
Clone Name:	5D12
Immunogen Species:	KRT7 / CK7 / Cytokeratin 7 antibody was raised against Human
Antigen Type:	Recombinant protein
Immunogen:	KRT7 / CK7 / Cytokeratin 7 antibody was raised against purified recombinant fragment of human CK7 expressed in E. Coli.
Specificity:	Human KRT7
Reactivity:	Human
Purification:	Ascites
Presentation:	Ascites fluid, 0.03% sodium azide. Sourced in Ascites.
Recommended Storage:	Long term: -20°C; Short term: +4°C. Avoid repeat freeze-thaw cycles.
Usage Summary:	Immunohistochemistry: LS-B3889 was validated for use in immunohistochemistry on a panel of 21 formalin-fixed, paraffin-embedded (FFPE) human tissues after heat induced antigen retrieval in pH 6.0 citrate buffer. After incubation with the primary antibody, slides were incubated with biotinylated secondary antibody, followed by alkaline phosphatase-streptavidin and chromogen. The stained slides were evaluated by a pathologist to confirm staining specificity. The optimal working dilution for LS-B3889 was determined to be 1:200.
Uses:	IHC - Paraffin (1:200 - 1:400), Western blot (1:500 - 1:2000), Flow Cytometry (1:200 - 1:400), ELISA (1:10000) (Optimal dilution to be determined by the researcher)
Size:	50 µl

Immunohistochemistry Image:



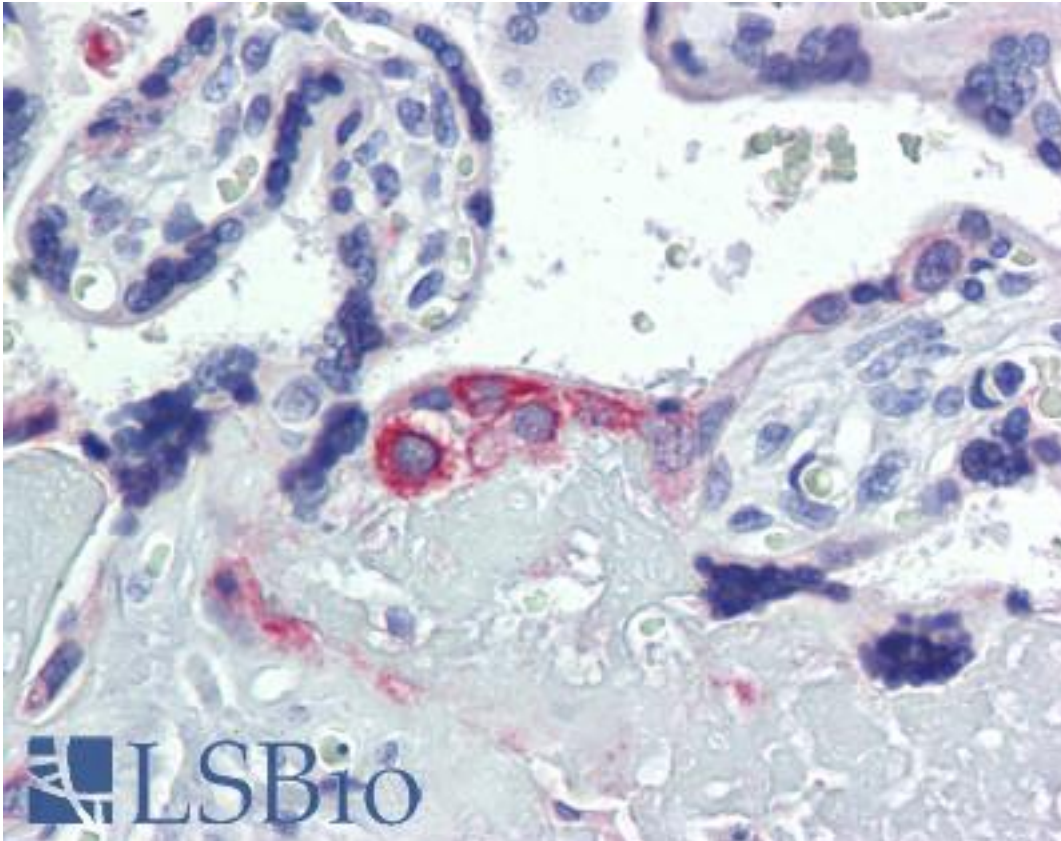
Anti-KRT7 / Cytokeratin 7 antibody IHC of human seminal vesicle. Immunohistochemistry of formalin-fixed, paraffin-embedded tissue after heat-induced antigen retrieval. Antibody LS-B3889 dilution 1:200.

Immunohistochemistry Image:



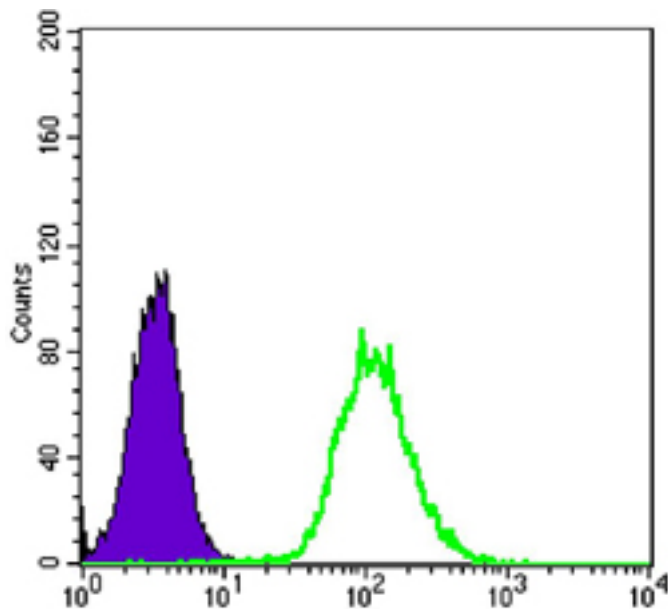
Anti-KRT7 / Cytokeratin 7 antibody IHC of human tonsil. Immunohistochemistry of formalin-fixed, paraffin-embedded tissue after heat-induced antigen retrieval. Antibody LS-B3889 dilution 1:200.

Immunohistochemistry Image:



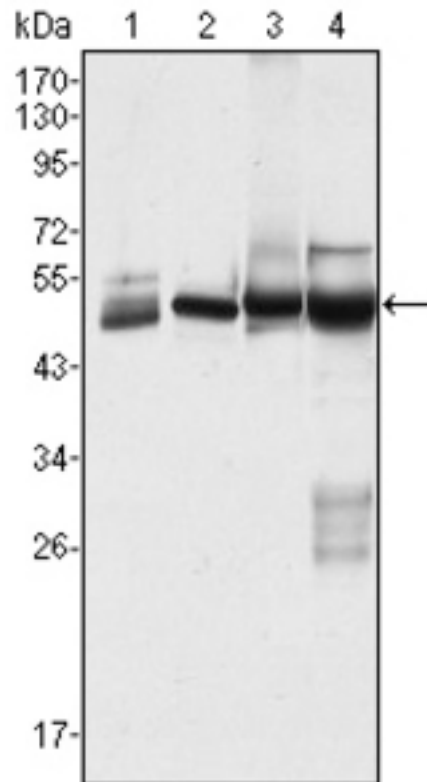
Anti-KRT7 / Cytokeratin 7 antibody IHC of human placenta. Immunohistochemistry of formalin-fixed, paraffin-embedded tissue after heat-induced antigen retrieval. Antibody LS-B3889 dilution 1:200.

Flow Cytometry Image:



Flow cytometry of HeLa cells using anti-CK7 mAb (green) and negative control (purple).

Western Blot Image:



Western blot of CK7 mouse mAb against HeLa (1), MCF-7 (2), A431 (3) and A549 (4) cell lysate.

Requested From:

Japan

Laboratory Reagent For In Vitro Research Use Only

Not for resale without prior written consent from LifeSpan BioSciences, Inc.

Created on 9/23/2014

© 2014 LifeSpan BioSciences