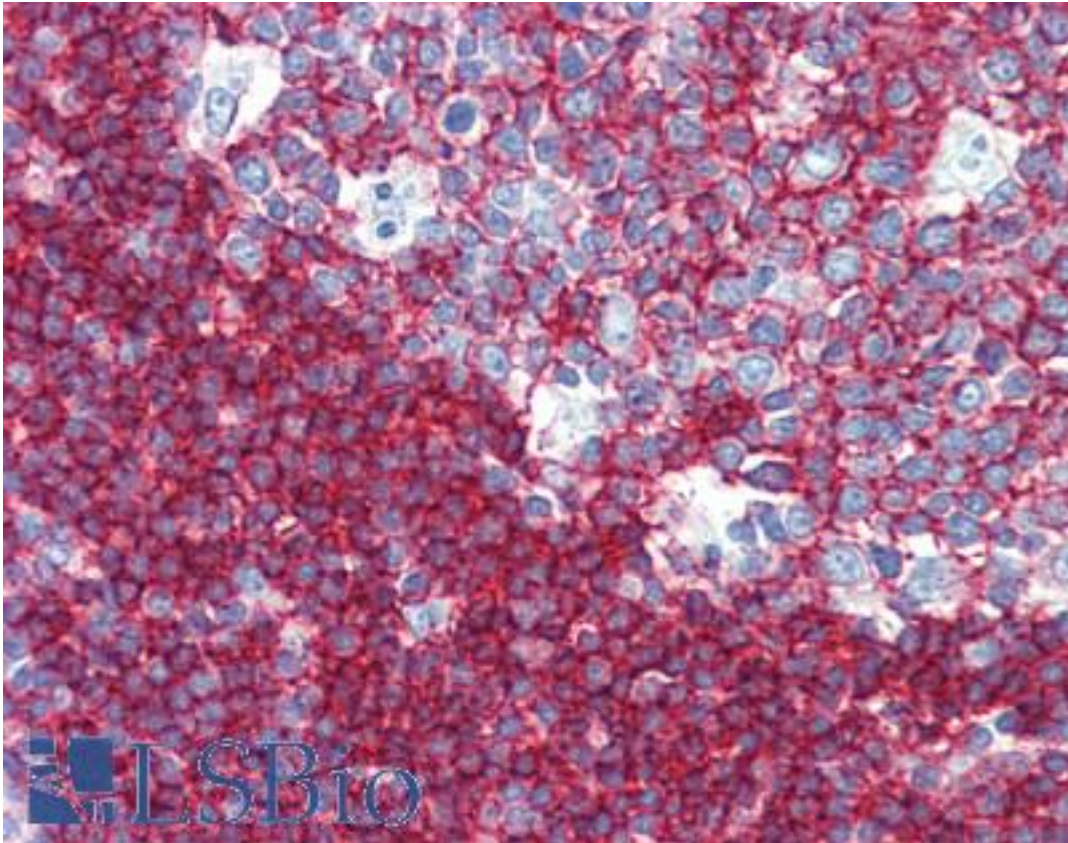


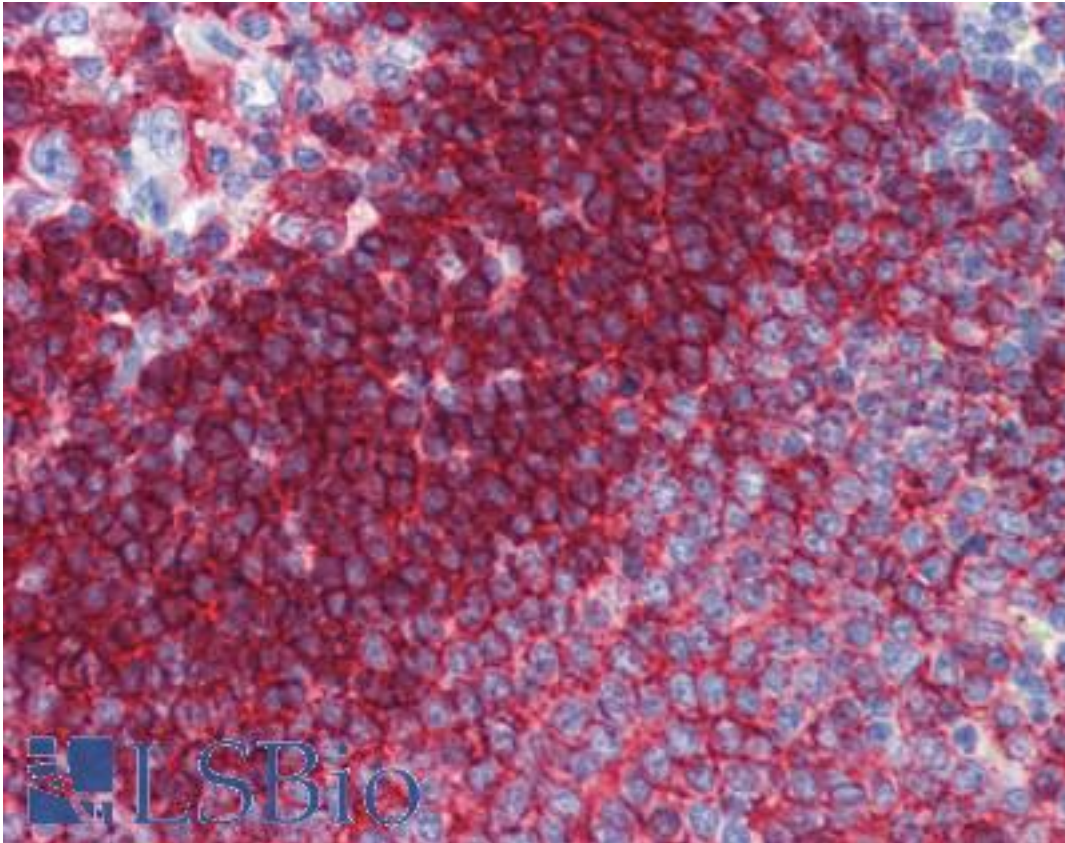
CD37 Mouse anti-Human Monoclonal (2B8) Antibody - LS-B3887 - LSBio	
CatalogID:	LS-B3887
Validation:	This antibody replaces catalog number LS-C108777. It has been validated for use in the following assays: IHC-P.
Target:	CD37 molecule
Synonyms:	CD37 Antibody, CD37 antigen Antibody, CD37 molecule Antibody, Leukocyte surface antigen CD37 Antibody, gp52-40 Antibody, TSPAN26 Antibody, Leukocyte antigen CD37 Antibody, Tetraspanin-26 Antibody, Tspan-26 Antibody
Family / Subfamily:	Tetraspan / not assigned-Tetraspan
Host	CD37 antibody was produced in Mouse
Clonality:	Monoclonal
Isotype:	IgG1
Clone Name:	2B8
Immunogen Species:	CD37 antibody was raised against Human
Antigen Type:	Recombinant protein
Immunogen:	CD37 antibody was raised against purified recombinant fragment of CD37 expressed in E. Coli.
Specificity:	Human CD37
Reactivity:	Human, Mouse
Purification:	Ascites
Presentation:	Ascites fluid, 0.03% sodium azide. Sourced in Ascites.
Recommended Storage:	Long term: -20°C; Short term: +4°C. Avoid repeat freeze-thaw cycles.
Usage Summary:	Immunohistochemistry: LS-B3887 was validated for use in immunohistochemistry on a panel of 21 formalin-fixed, paraffin-embedded (FFPE) human tissues after heat induced antigen retrieval in pH 6.0 citrate buffer. After incubation with the primary antibody, slides were incubated with biotinylated secondary antibody, followed by alkaline phosphatase-streptavidin and chromogen. The stained slides were evaluated by a pathologist to confirm staining specificity. The optimal working dilution for LS-B3887 was determined to be 1:200.
Uses:	IHC - Paraffin (1:200 - 1:400), Immunofluorescence (1:200 - 1:1000), ELISA (1:10000) (Optimal dilution to be determined by the researcher)
Size:	50 µl

Immunohistochemistry Image:



Anti-CD37 antibody IHC of human tonsil. Immunohistochemistry of formalin-fixed, paraffin-embedded tissue after heat-induced antigen retrieval. Antibody LS-B3887 dilution 1:200.

Immunohistochemistry Image:



Anti-CD37 antibody IHC of human spleen. Immunohistochemistry of formalin-fixed, paraffin-embedded tissue after heat-induced antigen retrieval. Antibody LS-B3887 dilution 1:200.

Requested From:

Japan

Laboratory Reagent For In Vitro Research Use Only

Not for resale without prior written consent from LifeSpan BioSciences, Inc.

Created on 9/23/2014

© 2014 LifeSpan BioSciences