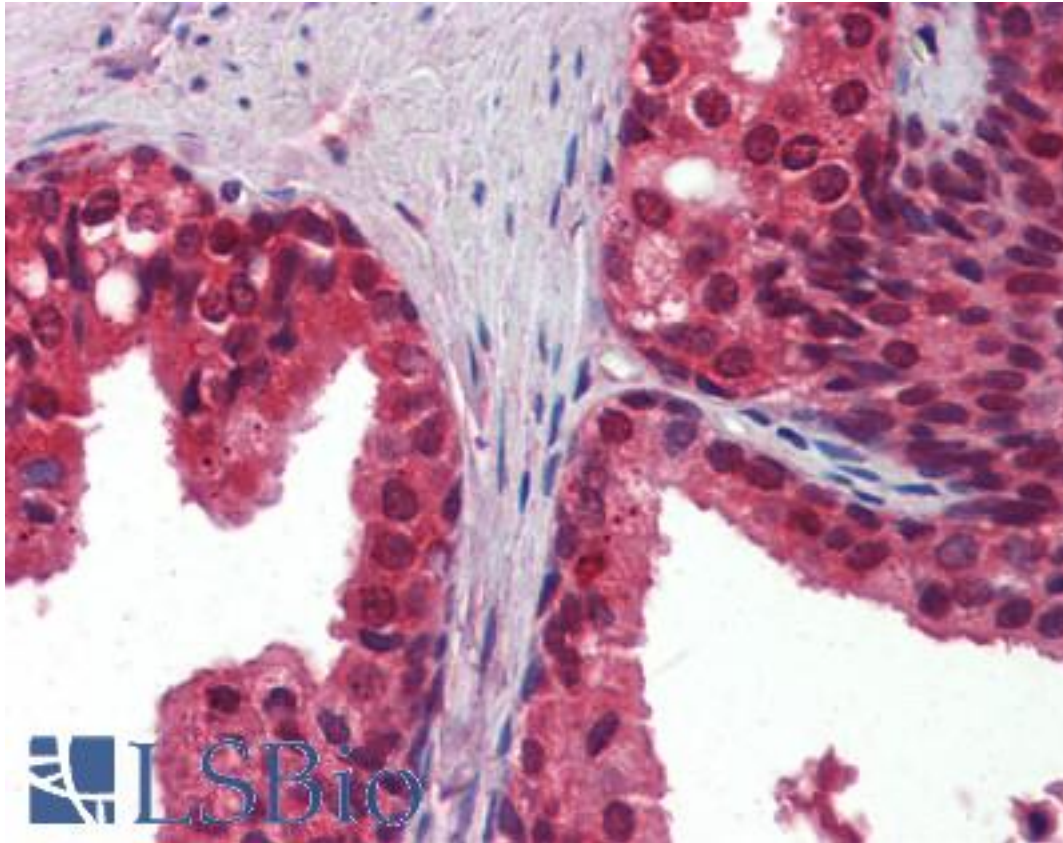


CANX / Calnexin Mouse anti-Human Monoclonal (3H4A7) Antibody - LS-B3886 - LSBio

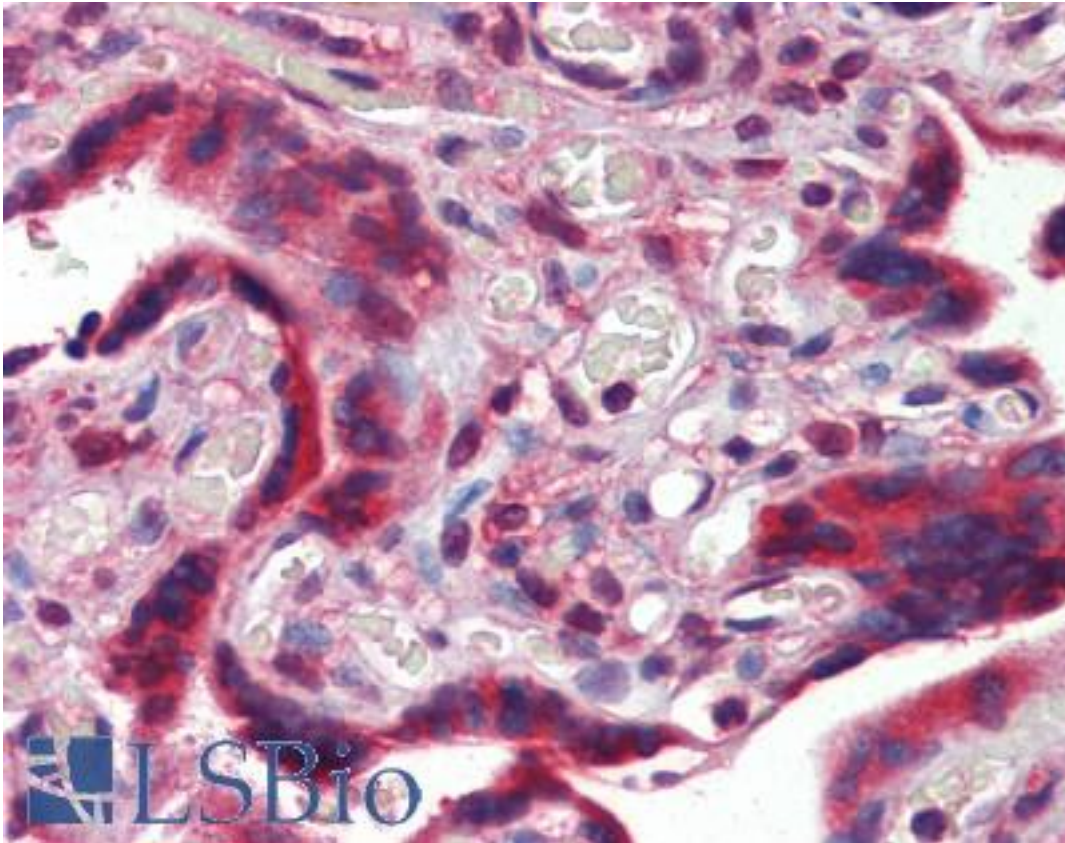
CatalogID:	LS-B3886
Validation:	This antibody replaces catalog number LS-C108774. It has been validated for use in the following assays: IHC-P.
Target:	calnexin (CANX)
Synonyms:	CANX Antibody, CNX Antibody, Calnexin Antibody, IP90 Antibody, p90 Antibody
Host	CANX antibody was produced in Mouse
Clonality:	Monoclonal
Isotype:	IgG2b
Clone Name:	3H4A7
Immunogen Species:	CANX / Calnexin antibody was raised against Human
Antigen Type:	Synthetic peptide - KLH conjugated
Immunogen:	CANX / Calnexin antibody was raised against synthetic peptide corresponding to aa (C-EAAEERPWLWVYILTVAL) of human Calnexin, conjugated to KLH. Percent identity by BLAST analysis: Human, Gorilla, Orangutan, Gibbon, Monkey, Marmoset, Mouse, Rat, Hamster, Panda, Bovine, Horse, Rabbit, Pig (100%); Elephant, Bat, Dog, Lizard (95%); Platypus, Xenopus (89%); Turkey, Chicken, Stickleback, Zebrafish, Trichoplax (84%).
Specificity:	Human CANX
Reactivity:	Human, Gorilla, Orangutan, Gibbon, Monkey, Mouse, Rat, Bovine, Hamster, Horse, Pig, Rabbit
Predicted Reactivity:	Bat, Dog
Purification:	Ascites
Presentation:	Ascites fluid, 0.03% sodium azide
Recommended Storage:	Long term: -20°C; Short term: +4°C. Avoid repeat freeze-thaw cycles.
Usage Summary:	Immunohistochemistry: LS-B3886 was validated for use in immunohistochemistry on a panel of 21 formalin-fixed, paraffin-embedded (FFPE) human tissues after heat induced antigen retrieval in pH 6.0 citrate buffer. After incubation with the primary antibody, slides were incubated with biotinylated secondary antibody, followed by alkaline phosphatase-streptavidin and chromogen. The stained slides were evaluated by a pathologist to confirm staining specificity. The optimal working dilution for LS-B3886 was determined to be 1:200.
Uses:	IHC - Paraffin (1:200 - 1:400), Immunofluorescence (1:200 - 1:1000), Western blot (1:500 - 1:2000), ELISA (1:10000) (Optimal dilution to be determined by the researcher)
Size:	50 µl

Immunohistochemistry Image:



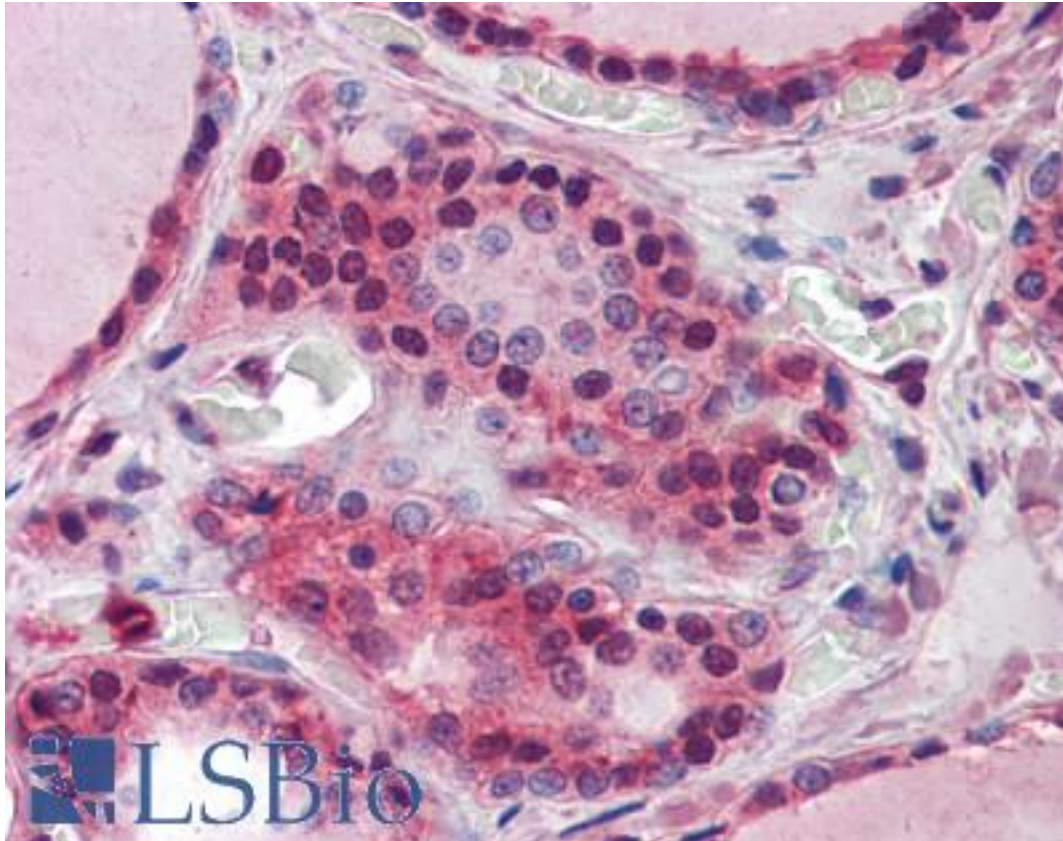
Anti-Calnexin antibody IHC of human prostate. Immunohistochemistry of formalin-fixed, paraffin-embedded tissue after heat-induced antigen retrieval. Antibody LS-B3886 dilution 1:200.

Immunohistochemistry Image:



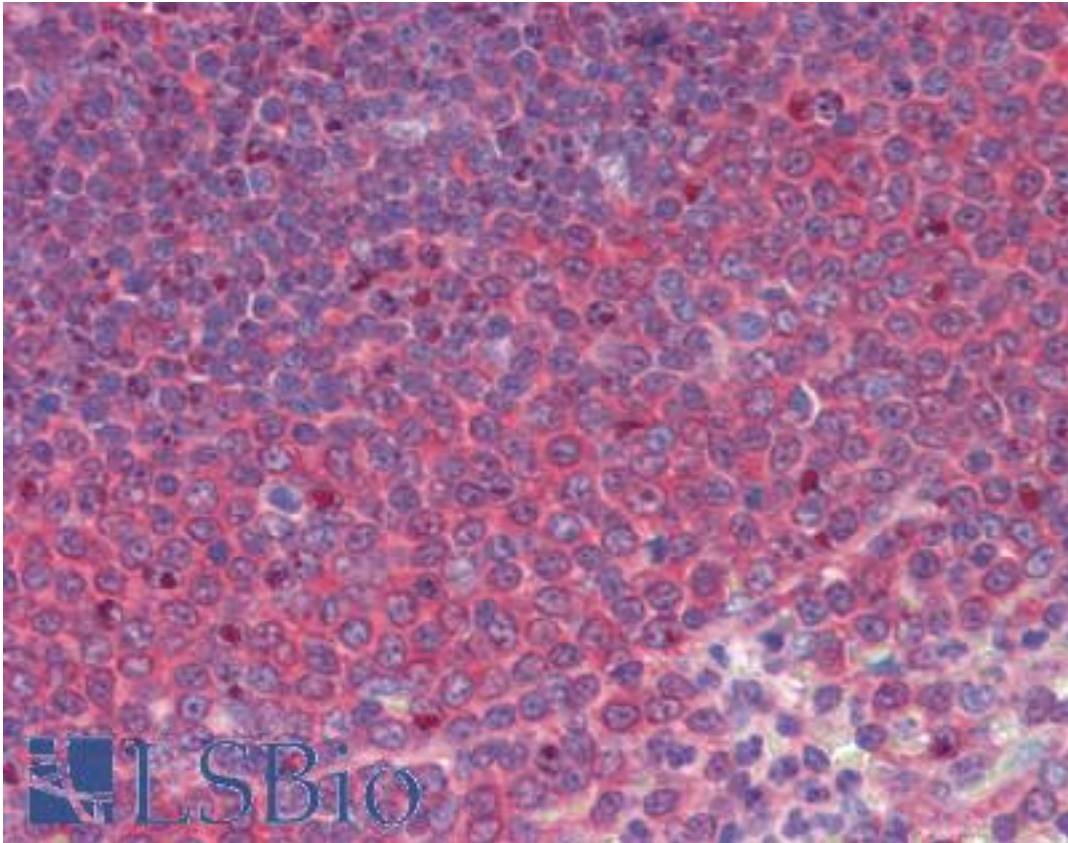
Anti-Calnexin antibody IHC of human placenta. Immunohistochemistry of formalin-fixed, paraffin-embedded tissue after heat-induced antigen retrieval. Antibody LS-B3886 dilution 1:200.

Immunohistochemistry Image:



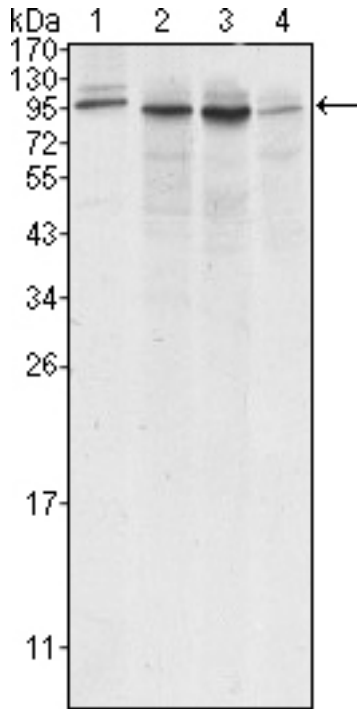
Anti-Calnexin antibody IHC of human thyroid. Immunohistochemistry of formalin-fixed, paraffin-embedded tissue after heat-induced antigen retrieval. Antibody LS-B3886 dilution 1:200.

Immunohistochemistry Image:



Anti-Calnexin antibody IHC of human spleen. Immunohistochemistry of formalin-fixed, paraffin-embedded tissue after heat-induced antigen retrieval. Antibody LS-B3886 dilution 1:200.

Western Blot Image:



Western blot of anti-Calnexin monoclonal antibody against A431 (1), HeLa (2), MCF-7 (3) and A549 (4) cell lysate.

Requested From:

Japan

Laboratory Reagent For In Vitro Research Use Only

Not for resale without prior written consent from LifeSpan BioSciences, Inc.

Created on 9/23/2014

© 2014 LifeSpan BioSciences