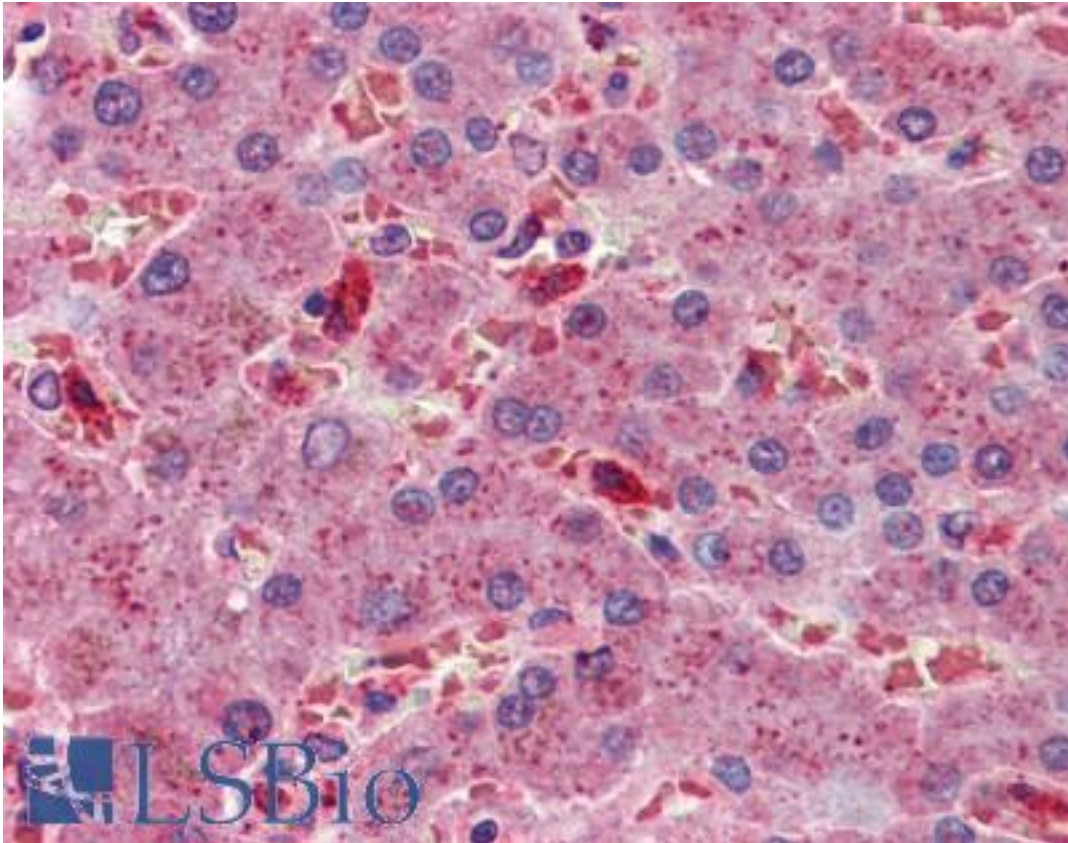


ALCAM / CD166 Mouse anti-Human Monoclonal (3F8B12) Antibody - LS-B3882 - LSBio

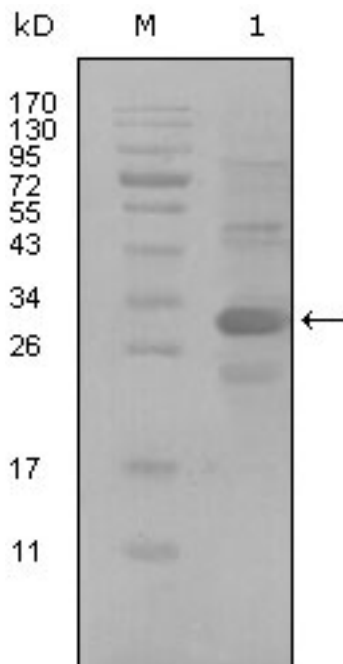
CatalogID:	LS-B3882
Validation:	This antibody replaces catalog number LS-C108764. It has been validated for use in the following assays: IHC-P.
Target:	activated leukocyte cell adhesion molecule (ALCAM)
Synonyms:	ALCAM Antibody, CD166 antigen Antibody, MEMD Antibody, CD166 Antibody
Host	ALCAM antibody was produced in Mouse
Clonality:	Monoclonal
Isotype:	IgG2a
Clone Name:	3F8B12
Immunogen Species:	ALCAM / CD166 antibody was raised against Human
Antigen Type:	Recombinant protein
Immunogen:	ALCAM / CD166 antibody was raised against purified recombinant fragment of ALCAM(aa405-524) expressed in E. Coli.
Specificity:	Human ALCAM
Reactivity:	Human
Purification:	Ascites
Presentation:	Ascites fluid, 0.03% sodium azide
Recommended Storage:	Long term: -20°C; Short term: +4°C. Avoid repeat freeze-thaw cycles.
Usage Summary:	Immunohistochemistry: LS-B3882 was validated for use in immunohistochemistry on a panel of 21 formalin-fixed, paraffin-embedded (FFPE) human tissues after heat induced antigen retrieval in pH 6.0 citrate buffer. After incubation with the primary antibody, slides were incubated with biotinylated secondary antibody, followed by alkaline phosphatase-streptavidin and chromogen. The stained slides were evaluated by a pathologist to confirm staining specificity. The optimal working dilution for LS-B3882 was determined to be 1:200.
Uses:	IHC - Paraffin (1:200 - 1:400), Western blot (1:500 - 1:2000), ELISA (1:10000) (Optimal dilution to be determined by the researcher)
Size:	50 µl

Immunohistochemistry Image:



Anti-ALCAM / CD166 antibody IHC of human liver. Immunohistochemistry of formalin-fixed, paraffin-embedded tissue after heat-induced antigen retrieval. Antibody LS-B3882 dilution 1:200.

Western Blot Image:



Western blot of anti-ALCAM monoclonal antibody against truncated Trx-ALCAM recombinant protein(1).

Requested From:

Japan

Laboratory Reagent For In Vitro Research Use Only

Not for resale without prior written consent from LifeSpan BioSciences, Inc.

Created on 9/23/2014

© 2014 LifeSpan BioSciences