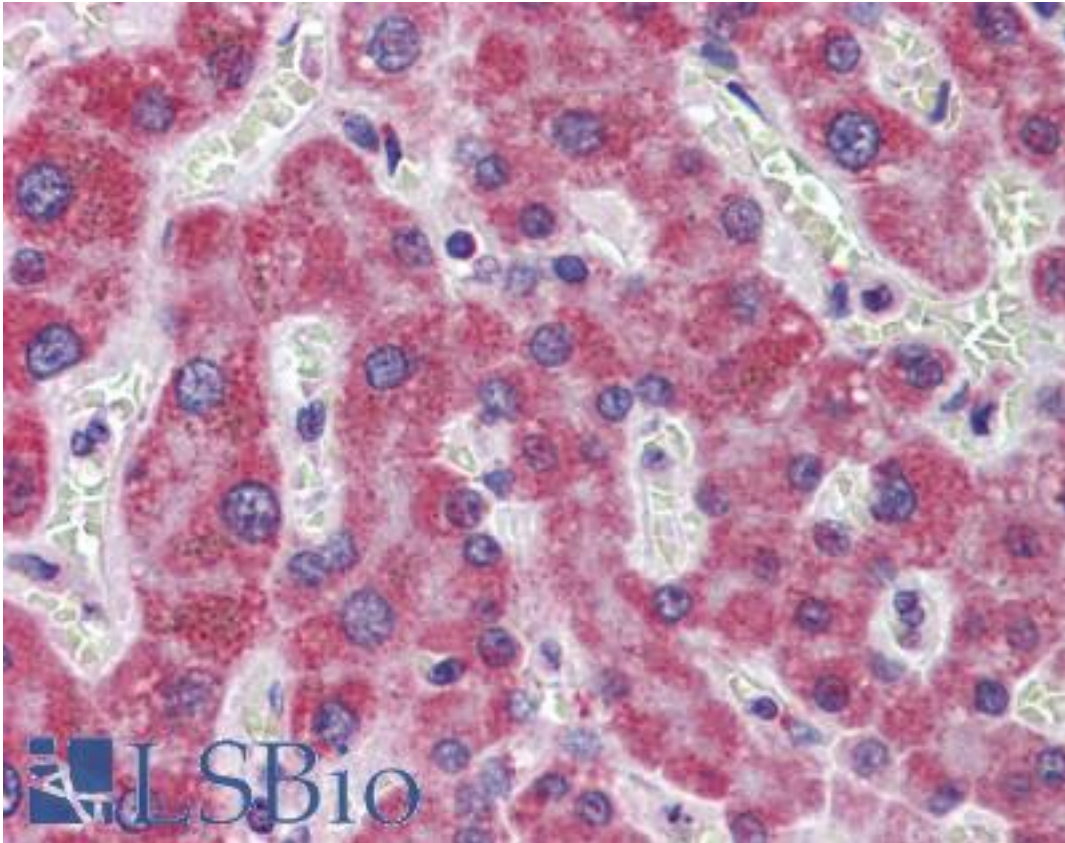


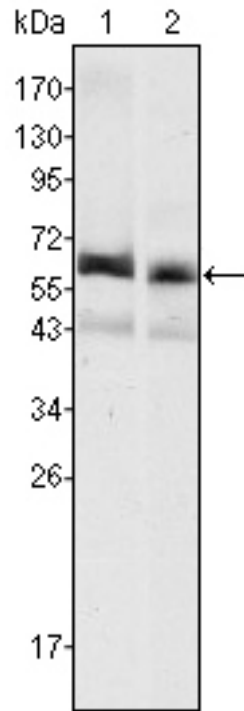
AFP / Alpha Fetoprotein Mouse anti-Human Monoclonal (6E6) Antibody - LS-B3881 - LSBio	
CatalogID:	LS-B3881
Validation:	This antibody replaces catalog number LS-C108761. It has been validated for use in the following assays: IHC-P.
Target:	alpha-fetoprotein (AFP)
Synonyms:	AFP Antibody, Alpha-1-fetoprotein Antibody, Alpha-fetoprotein Antibody, HPAFP Antibody, Alpha-fetoglobulin Antibody, FETA Antibody
Host	AFP antibody was produced in Mouse
Clonality:	Monoclonal
Isotype:	IgG2b
Clone Name:	6E6
Immunogen Species:	AFP / Alpha Fetoprotein antibody was raised against Human
Immunogen:	AFP / Alpha Fetoprotein antibody was raised against purified recombinant fragment of human AFP expressed in E. coli.
Specificity:	Human AFP
Reactivity:	Human
Purification:	Protein G purified
Presentation:	Liquid in PBS, 50% glycerol, 0.03% sodium azide
Recommended Storage:	Long term: -20°C; Short term: +4°C. Avoid repeat freeze-thaw cycles.
Usage Summary:	Immunohistochemistry: LS-B3881 was validated for use in immunohistochemistry on a panel of 21 formalin-fixed, paraffin-embedded (FFPE) human tissues after heat induced antigen retrieval in pH 6.0 citrate buffer. After incubation with the primary antibody, slides were incubated with biotinylated secondary antibody, followed by alkaline phosphatase-streptavidin and chromogen. The stained slides were evaluated by a pathologist to confirm staining specificity. The optimal working dilution for LS-B3881 was determined to be 1:200.
Uses:	IHC - Paraffin (1:200 - 1:400), Western blot (1:500 - 1:2000), ELISA (1:10000) (Optimal dilution to be determined by the researcher)
Size:	50 µl

Immunohistochemistry Image:



Anti-Alpha-Fetoprotein antibody IHC of human liver. human. Immunohistochemistry of formalin-fixed, paraffin-embedded tissue after heat-induced antigen retrieval. Antibody LS-B3881 dilution 1:200.

Western Blot Image:



Western blot of anti-AFP mAb against HepG2 (1) and SMMC-7721 (2) cell lysate.

Requested From:

Japan

Laboratory Reagent For In Vitro Research Use Only

Not for resale without prior written consent from LifeSpan BioSciences, Inc.

Created on 9/23/2014

© 2014 LifeSpan BioSciences