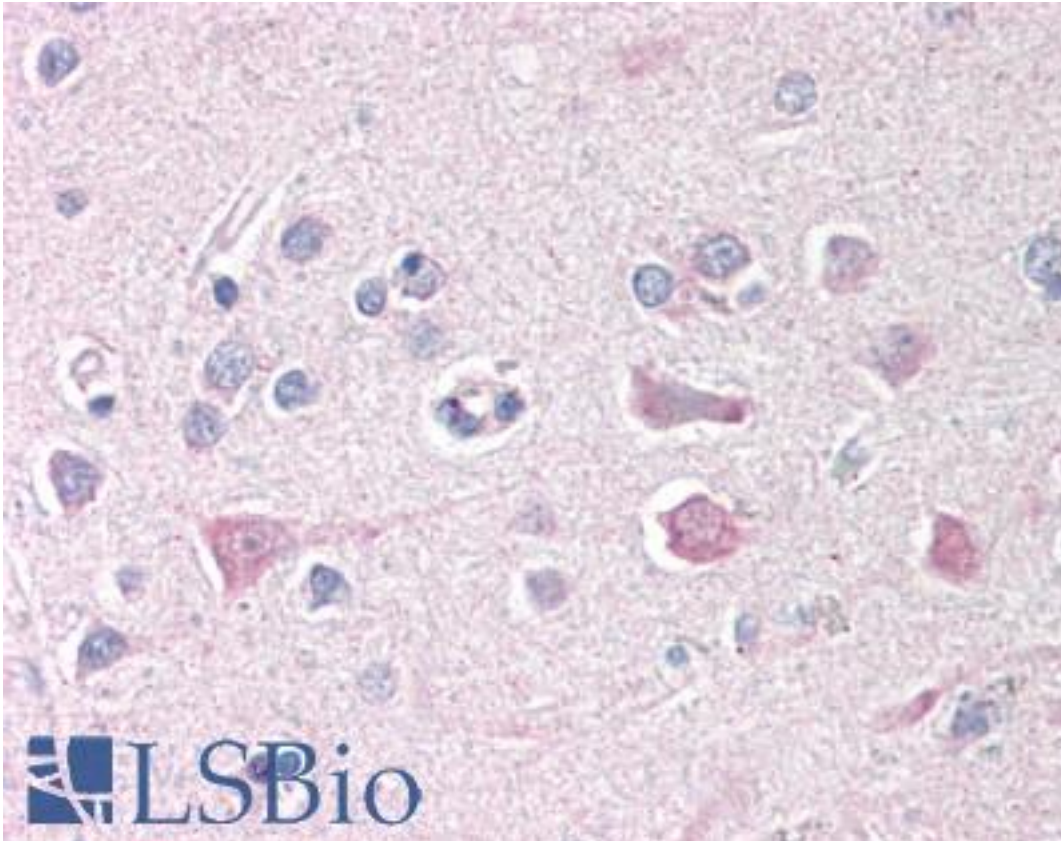


**ISG15 Rabbit anti-Human Polyclonal Antibody - LS-B388 - LSBio**

<b>CatalogID:</b>	LS-B388
<b>Validation:</b>	This antibody replaces catalog number LS-C18911. It has been validated for use in the following assays: IHC.
<b>Target:</b>	ISG15 ubiquitin-like modifier
<b>Synonyms:</b>	ISG15 Antibody, HUCRP Antibody, IF115 Antibody, ISG15 ubiquitin-like modifier Antibody, G1P2 Antibody, IP17 Antibody, Ubiquitin-like protein ISG15 Antibody, UCRP Antibody
<b>Host</b>	ISG15 antibody was produced in Rabbit
<b>Clonality:</b>	Polyclonal
<b>Immunogen Species:</b>	ISG15 antibody was raised against Human
<b>Immunogen:</b>	ISG15 antibody was raised against recombinant human ISG15.
<b>Specificity:</b>	Recombinant human ISG15 protein.
<b>Reactivity:</b>	Human
<b>Purification:</b>	Purified IgG
<b>Presentation:</b>	0.02 M potassium phosphate, 0.15 M sodium chloride, pH 7.2, 0.01% sodium azide.
<b>Recommended Storage:</b>	+4°C or -20°C, Avoid repeated freezing and thawing.
<b>Usage Summary:</b>	Immunohistochemistry: LS-B388 was validated for use in immunohistochemistry on a panel of 21 formalin-fixed, paraffin-embedded (FFPE) human tissues after heat induced antigen retrieval in pH 6.0 citrate buffer. After incubation with the primary antibody, slides were incubated with biotinylated secondary antibody, followed by alkaline phosphatase-streptavidin and chromogen. The stained slides were evaluated by a pathologist to confirm staining specificity. The optimal working concentration for LS-B388 was determined to be 20 ug/ml.
<b>Uses:</b>	IHC - Paraffin (20 µg/ml), Western blot (1:200 - 1:1000), Immunoprecipitation, ELISA (1:2000 - 1:10000) (Optimal dilution to be determined by the researcher)
<b>Size:</b>	50 µg
<b>Concentration:</b>	1 mg/ml

**Immunohistochemistry Image:**



Anti-ISG15 antibody IHC of human brain, cortex. Immunohistochemistry of formalin-fixed, paraffin-embedded tissue after heat-induced antigen retrieval. Antibody LS-B388 concentration 20 ug/ml.

**Requested From:**

Japan

Laboratory Reagent For In Vitro Research Use Only

Not for resale without prior written consent from LifeSpan BioSciences, Inc.

Created on 9/23/2014

© 2014 LifeSpan BioSciences