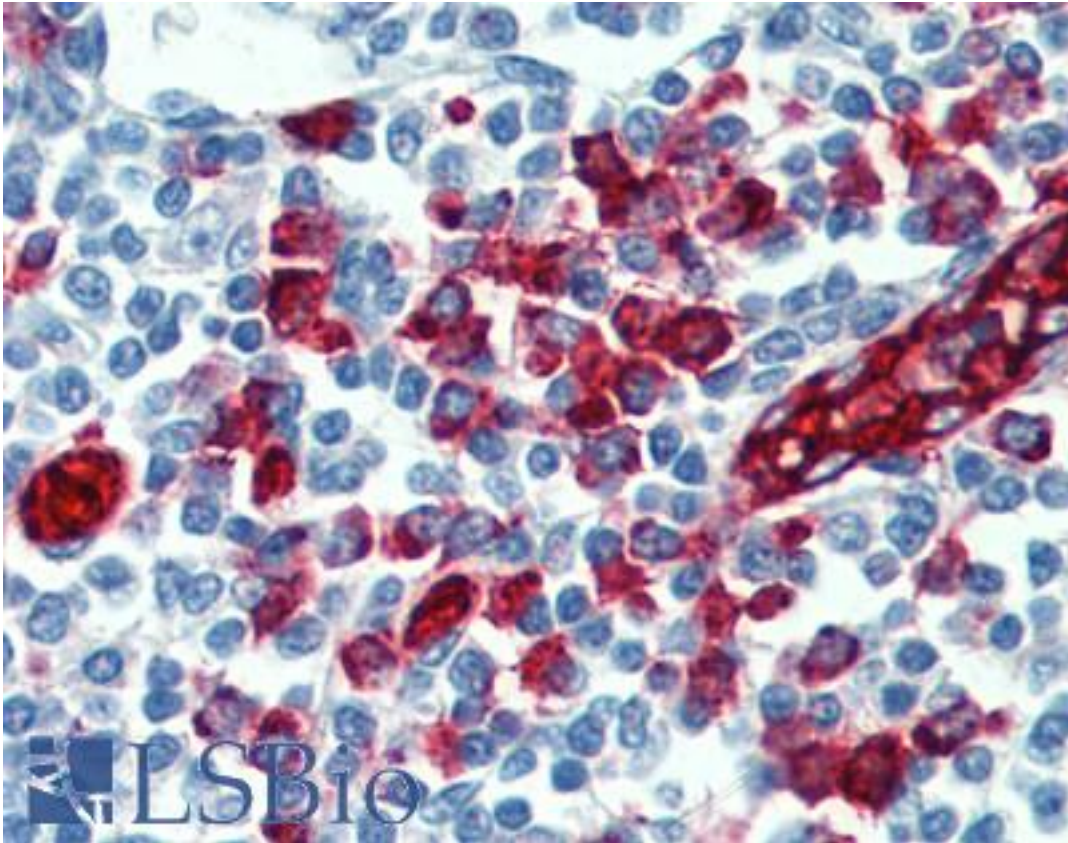


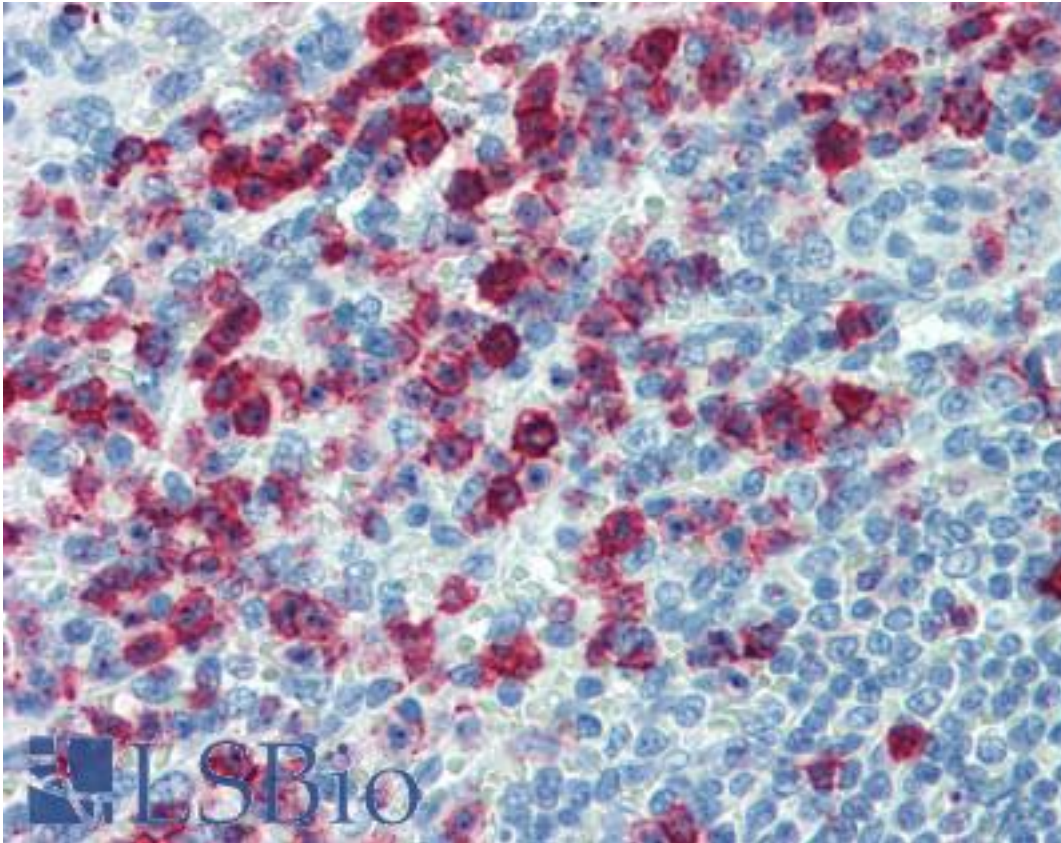
SELPLG / PSGL-1 / CD162 Rat anti-Human Monoclonal (HECA-452) Antibody - LS-B3879 - LSBio	
<b>CatalogID:</b>	LS-B3879
<b>Validation:</b>	This antibody replaces catalog number LS-C41358. It has been validated for use in the following assays: IHC-P.
<b>Target:</b>	selectin P ligand (SELPLG)
<b>Synonyms:</b>	SELPLG Antibody, CD162 antigen Antibody, CLA Antibody, CD162 Antibody, PSGL1 Antibody, PSGL-1 Antibody, Selectin P ligand Antibody
<b>Host</b>	SELPLG antibody was produced in Rat
<b>Clonality:</b>	Monoclonal
<b>Isotype:</b>	IgM
<b>Clone Name:</b>	HECA-452
<b>Immunogen Species:</b>	SELPLG / PSGL-1 / CD162 antibody was raised against Human
<b>Immunogen:</b>	SELPLG / PSGL-1 / CD162 antibody was raised against stromal preparation from human tonsils
<b>Reactivity:</b>	Human, Mouse
<b>Purification:</b>	Affinity purified
<b>Presentation:</b>	Phosphate-buffered solution, pH 7.2, 0.09% sodium azide.
<b>Recommended Storage:</b>	+4°C, avoid freezing
<b>Uses:</b>	IHC - Paraffin (10 µg/ml), Flow Cytometry (Optimal dilution to be determined by the researcher)
<b>Size:</b>	50 µg
<b>Concentration:</b>	0.5 mg/ml

**Immunohistochemistry Image:**



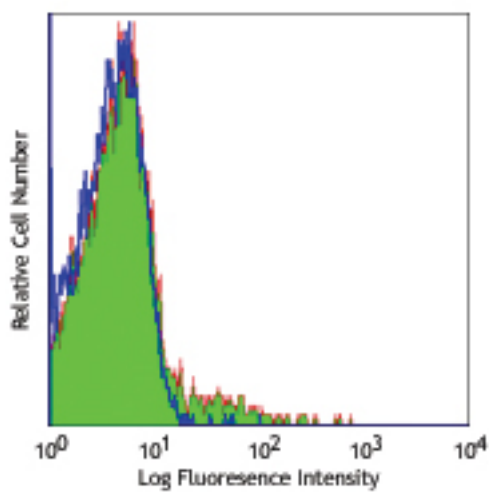
Anti-SELPLG / CD162 antibody IHC of human tonsil. Immunohistochemistry of formalin-fixed, paraffin-embedded tissue after heat-induced antigen retrieval. Antibody LS-B3879 concentration 10 ug/ml.

**Immunohistochemistry Image:**



Anti-SELPLG / CD162 antibody IHC of human spleen. Immunohistochemistry of formalin-fixed, paraffin-embedded tissue after heat-induced antigen retrieval. Antibody LS-B3879 concentration 10 ug/ml.

**Flow Cytometry Image:**



Human peripheral blood lymphocytes stained with purified HECA-452, followed by anti-mouse IgG FITC.

Requested From:

Japan

Laboratory Reagent For In Vitro Research Use Only

Not for resale without prior written consent from LifeSpan BioSciences, Inc.

Created on 9/23/2014

© 2014 LifeSpan BioSciences