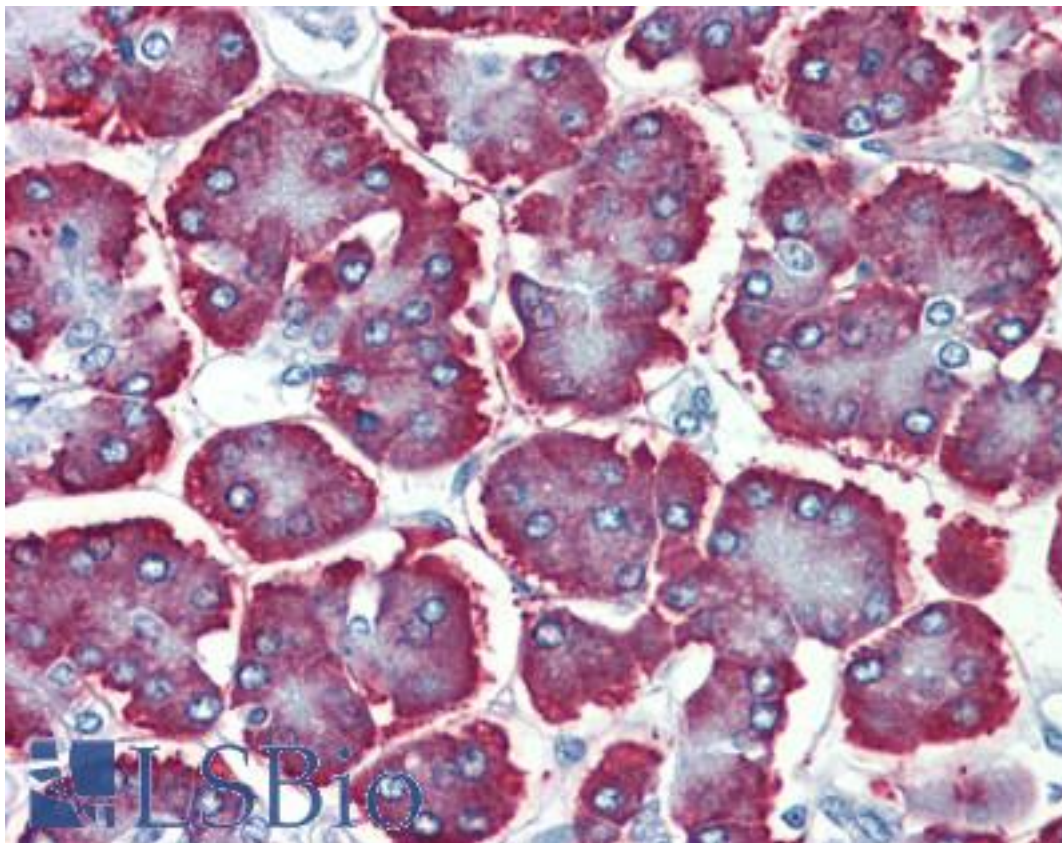


**GBAS Rabbit anti-Human Polyclonal (Internal) Antibody - LS-B3865 - LSBio**

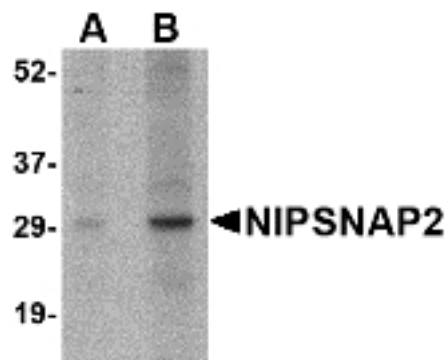
<b>CatalogID:</b>	LS-B3865
<b>Validation:</b>	This antibody replaces catalog number LS-C82896. It has been validated for use in the following assays: IHC-P.
<b>Target:</b>	glioblastoma amplified sequence (GBAS)
<b>Synonyms:</b>	GBAS Antibody, NIPSNAP2 Antibody, Protein NipSnap homolog 2 Antibody
<b>Host</b>	GBAS antibody was produced in Rabbit
<b>Clonality:</b>	Polyclonal
<b>Immunogen Species:</b>	GBAS antibody was raised against Human
<b>Antigen Type:</b>	Synthetic peptide
<b>Immunogen:</b>	GBAS antibody was raised against a 14 amino acid peptide near the center of human NIPSNAP2.
<b>Epitope:</b>	Internal
<b>Reactivity:</b>	Human, Mouse, Rat
<b>Purification:</b>	Immunoaffinity purified
<b>Presentation:</b>	PBS containing 0.02% sodium azide
<b>Recommended Storage:</b>	Short term 4°C, long term aliquot and store at -20°C, avoid freeze thaw cycles. Store undiluted.
<b>Uses:</b>	IHC - Paraffin (5 µg/ml), Western blot (1 - 2 µg/ml), ELISA (Optimal dilution to be determined by the researcher)
<b>Size:</b>	50 µg
<b>Concentration:</b>	1 mg/ml

**Immunohistochemistry Image:**



Anti-GBAS antibody IHC of human pancreas. Immunohistochemistry of formalin-fixed, paraffin-embedded tissue after heat-induced antigen retrieval. Antibody LS-B3865 concentration 5 ug/ml.

**Western Blot Image:**



Western blot of NIPSNAP2 in human skeletal muscle tissue lysate with NIPSNAP2 antibody at (A) 1 and (B) 2 ug/ml.

Requested From:

Japan

Laboratory Reagent For In Vitro Research Use Only

Not for resale without prior written consent from LifeSpan BioSciences, Inc.

Created on 9/23/2014

© 2014 LifeSpan BioSciences