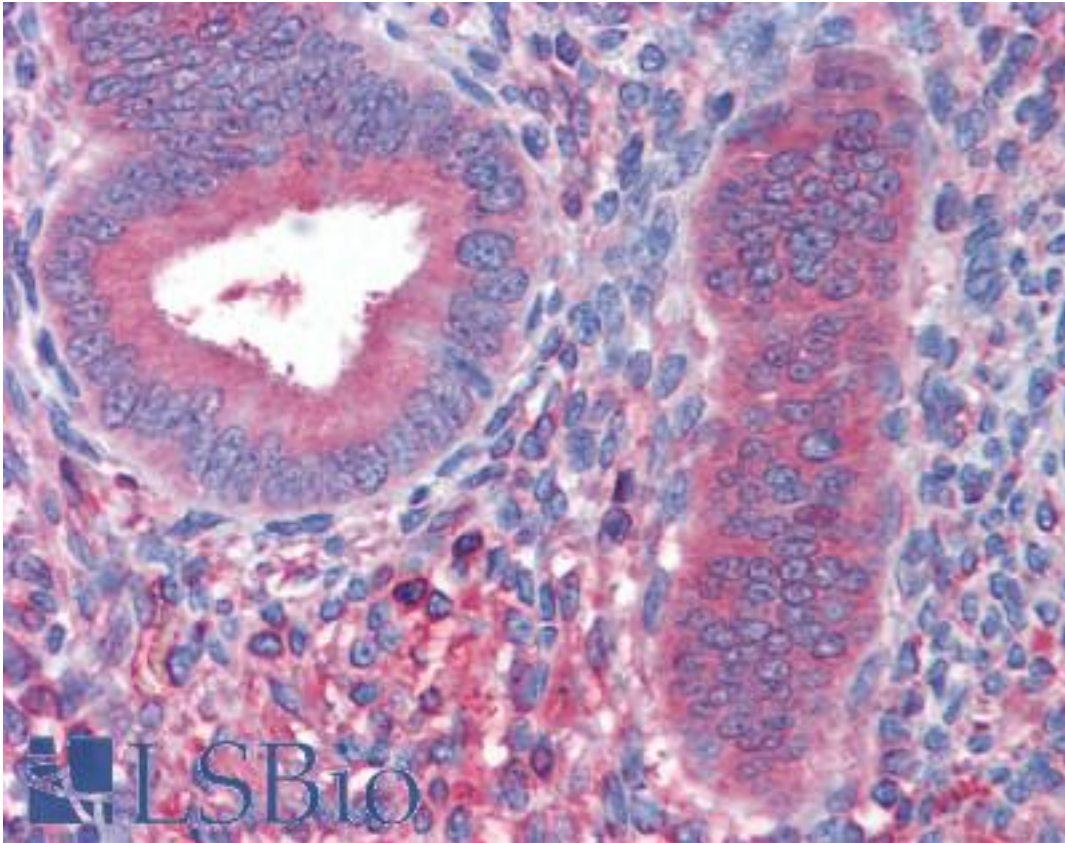


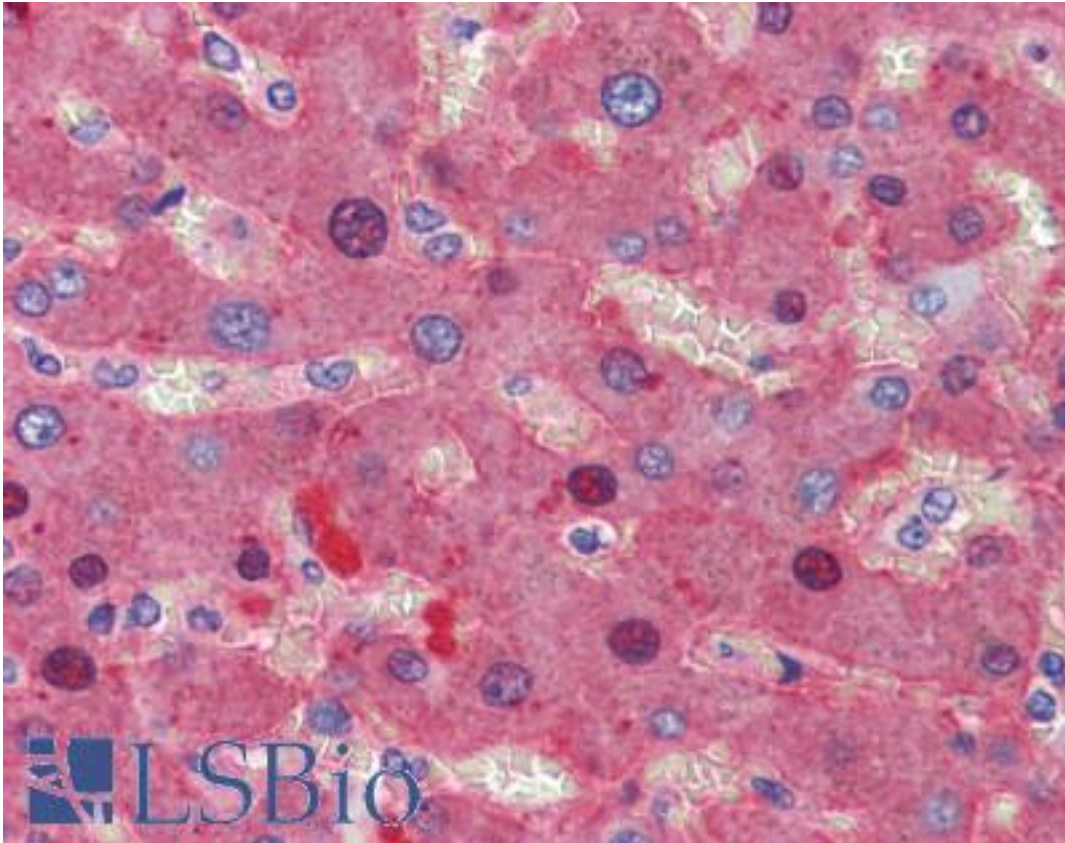
| FGB Mouse anti-Human Monoclonal (1F9) Antibody - LS-B3863 - LSBio |  |
|---|--|
| <b>CatalogID:</b>   | LS-B3863   |
| <b>Validation:</b>  | This antibody replaces catalog number LS-C108750. It has been validated for use in the following assays: IHC-P.  |
| <b>Target:</b>  | fibrinogen beta chain (FGB)  |
| <b>Synonyms:</b>  | FGB Antibody, Fibrinogen, B beta polypeptide Antibody, Fibrinogen beta chain Antibody  |
| <b>Host</b>   | FGB antibody was produced in Mouse   |
| <b>Clonality:</b>   | Monoclonal   |
| <b>Isotype:</b>   | IgG1   |
| <b>Clone Name:</b>  | 1F9  |
| <b>Immunogen Species:</b>   | FGB antibody was raised against Human  |
| <b>Immunogen:</b>   | FGB antibody was raised against purified recombinant fragment of human FGB (aa30-300) expressed in E. coli.  |
| <b>Specificity:</b>   | Human FGB  |
| <b>Reactivity:</b>  | Human  |
| <b>Purification:</b>  | Ascites  |
| <b>Presentation:</b>  | Ascites fluid, 0.03% sodium azide. Sourced in Ascites.   |
| <b>Recommended Storage:</b>                                       | Long term: -20°C; Short term: +4°C. Avoid repeat freeze-thaw cycles.   |
| <b>Usage Summary:</b>   | Immunohistochemistry: LS-B3863 was validated for use in immunohistochemistry on a panel of 21 formalin-fixed, paraffin-embedded (FFPE) human tissues after heat induced antigen retrieval in pH 6.0 citrate buffer. After incubation with the primary antibody, slides were incubated with biotinylated secondary antibody, followed by alkaline phosphatase-streptavidin and chromogen. The stained slides were evaluated by a pathologist to confirm staining specificity. The optimal working dilution for LS-B3863 was determined to be 1:200. |
| <b>Uses:</b>  | IHC - Paraffin (1:200 - 1:300), Western blot (1:500 - 1:2000), ELISA (1:10000) (Optimal dilution to be determined by the researcher)   |
| <b>Size:</b>  | 50 µl  |

**Immunohistochemistry Image:**



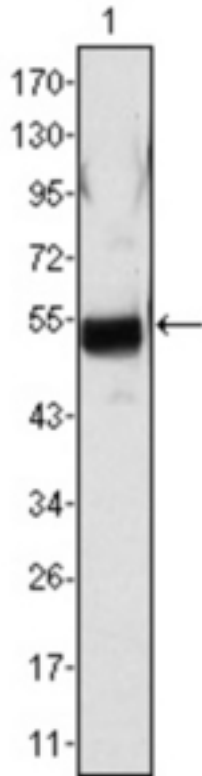
Anti-FGB / Fibrinogen Beta Chain antibody IHC of human uterus. Immunohistochemistry of formalin-fixed, paraffin-embedded tissue after heat-induced antigen retrieval. Antibody LS-B3863 dilution 1:200.

**Immunohistochemistry Image:**



Anti-FGB / Fibrinogen Beta Chain antibody IHC of human liver. Immunohistochemistry of formalin-fixed, paraffin-embedded tissue after heat-induced antigen retrieval. Antibody LS-B3863 dilution 1:200.

**Western Blot Image:**



Western blot of anti-FGB mAb against human plasma (1).

**Requested From:**

Japan

Laboratory Reagent For In Vitro Research Use Only

Not for resale without prior written consent from LifeSpan BioSciences, Inc.

Created on 9/23/2014

© 2014 LifeSpan BioSciences