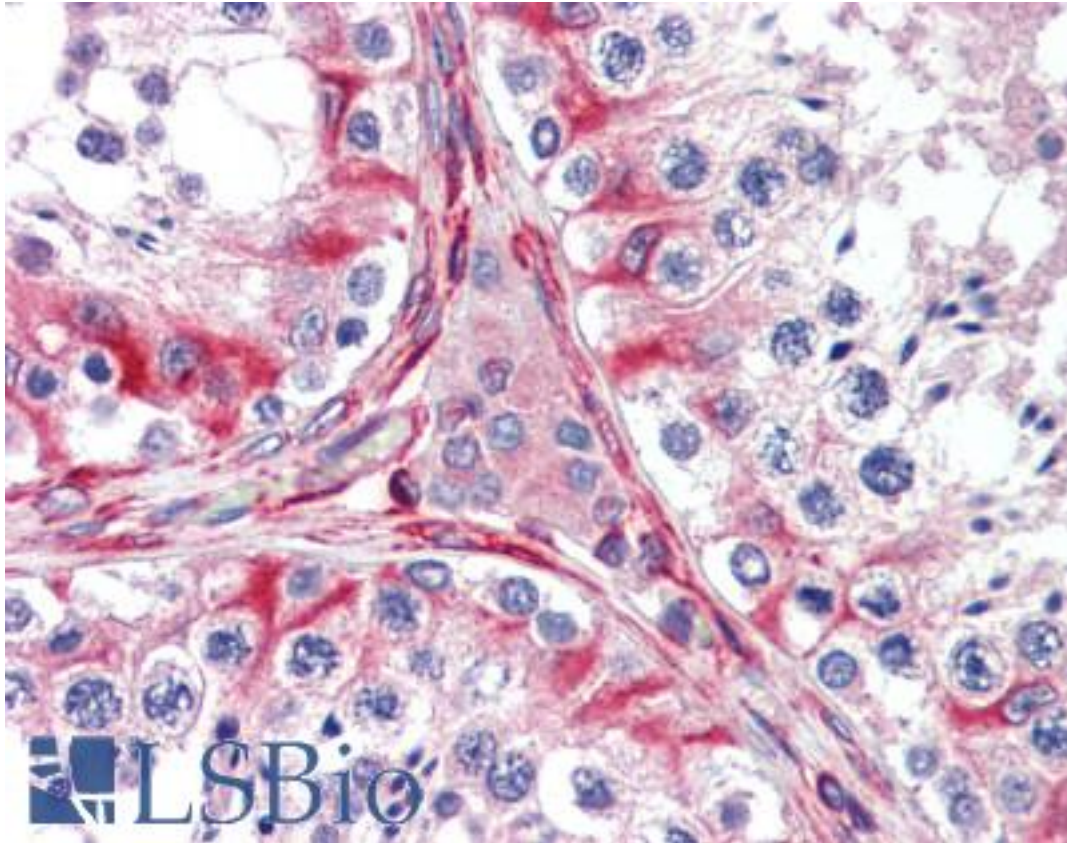


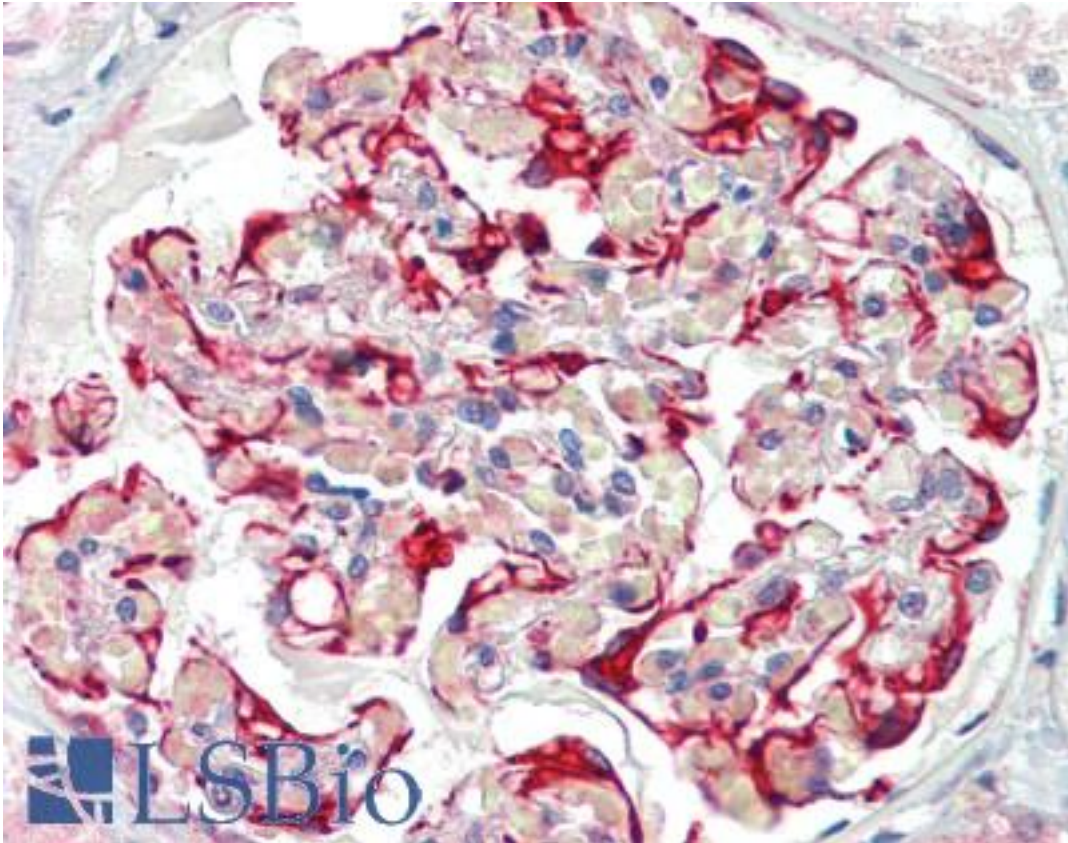
NEP / DDR1 Mouse anti-Human Monoclonal (2G4E12) Antibody - LS-B3861 - LSBio	
CatalogID:	LS-B3861
Validation:	This antibody replaces catalog number LS-C108747. It has been validated for use in the following assays: IHC-P.
Target:	discoidin domain receptor tyrosine kinase 1 (DDR1)
Synonyms:	DDR1 Antibody, Cell adhesion kinase Antibody, CD167 Antibody, CD167a antigen Antibody, EDDR1 Antibody, ENTRK4 Antibody, Mammary carcinoma kinase 10 Antibody, MCK10 Antibody, NEP Antibody, PTK3 Antibody, PTK3A Antibody, RTK6 Antibody, Tyrosine-protein kinase CAK Antibody, CAK Antibody, DDR Antibody, Discoidin domain receptor 1 Antibody, HGK2 Antibody, MCK-10 Antibody, NTRK4 Antibody, Protein-tyrosine kinase 3A Antibody, Protein-tyrosine kinase RTK-6 Antibody, TRK E Antibody, TRKE Antibody, Tyrosine kinase DDR Antibody
Family / Subfamily:	Protein Kinase / DDR/TKT
Host	DDR1 antibody was produced in Mouse
Clonality:	Monoclonal
Isotype:	IgG1
Clone Name:	2G4E12
Immunogen Species:	NEP / DDR1 antibody was raised against Human
Immunogen:	NEP / DDR1 antibody was raised against purified recombinant fragment of DDR1(aa602-681) expressed in E. coli.
Specificity:	Human DDR1
Reactivity:	Human
Purification:	Ascites
Presentation:	Ascites fluid, 0.03% sodium azide. Sourced in Ascites.
Recommended Storage:	Long term: -20°C; Short term: +4°C. Avoid repeat freeze-thaw cycles.
Usage Summary:	Immunohistochemistry: LS-B3861 was validated for use in immunohistochemistry on a panel of 21 formalin-fixed, paraffin-embedded (FFPE) human tissues after heat induced antigen retrieval in pH 6.0 citrate buffer. After incubation with the primary antibody, slides were incubated with biotinylated secondary antibody, followed by alkaline phosphatase-streptavidin and chromogen. The stained slides were evaluated by a pathologist to confirm staining specificity. The optimal working dilution for LS-B3861 was determined to be 1:200.
Uses:	IHC - Paraffin (1:200 - 1:300), Western blot (1:500 - 1:2000), ELISA (1:10000) (Optimal dilution to be determined by the researcher)
Size:	50 µl
Concentration:	1 mg/ml

Immunohistochemistry Image:



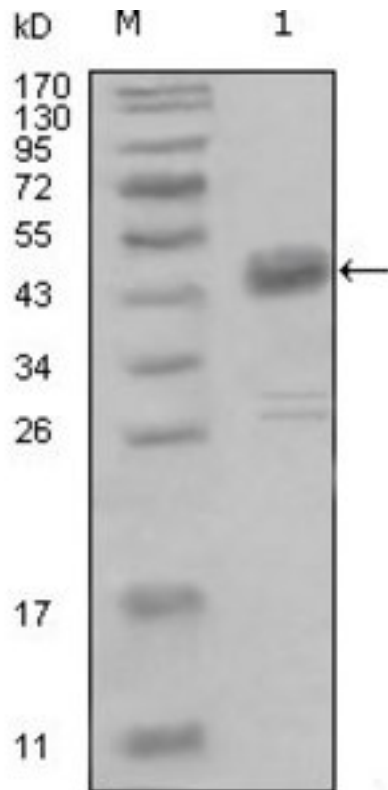
Anti-DDR1 antibody IHC of human testis. Immunohistochemistry of formalin-fixed, paraffin-embedded tissue after heat-induced antigen retrieval. Antibody LS-B3861 dilution 1:200.

Immunohistochemistry Image:



Anti-DDR1 antibody IHC of human kidney. Immunohistochemistry of formalin-fixed, paraffin-embedded tissue after heat-induced antigen retrieval. Antibody LS-B3861 dilution 1:200.

Western Blot Image:



Western blot of anti-DDR1 monoclonal antibody against truncated MBP-DDR1 recombinant protein(1).

Requested From:

Japan

Laboratory Reagent For In Vitro Research Use Only

Not for resale without prior written consent from LifeSpan BioSciences, Inc.

Created on 9/23/2014

© 2014 LifeSpan BioSciences