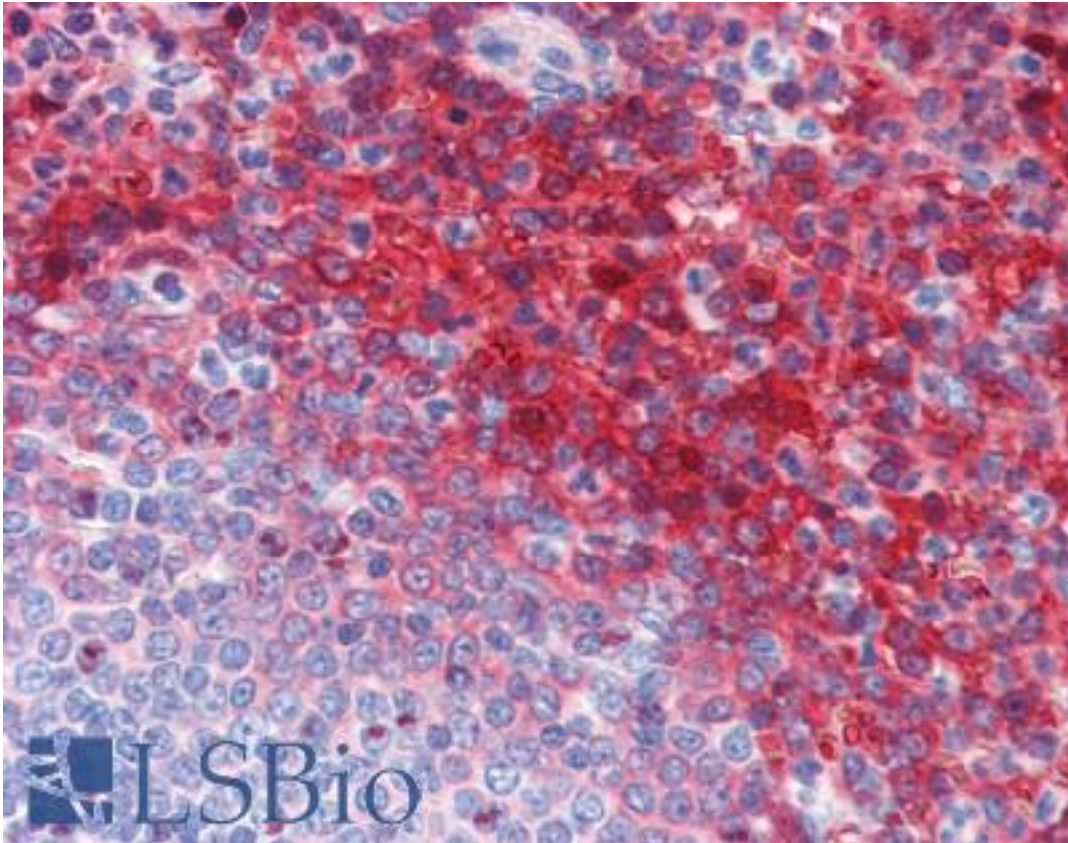


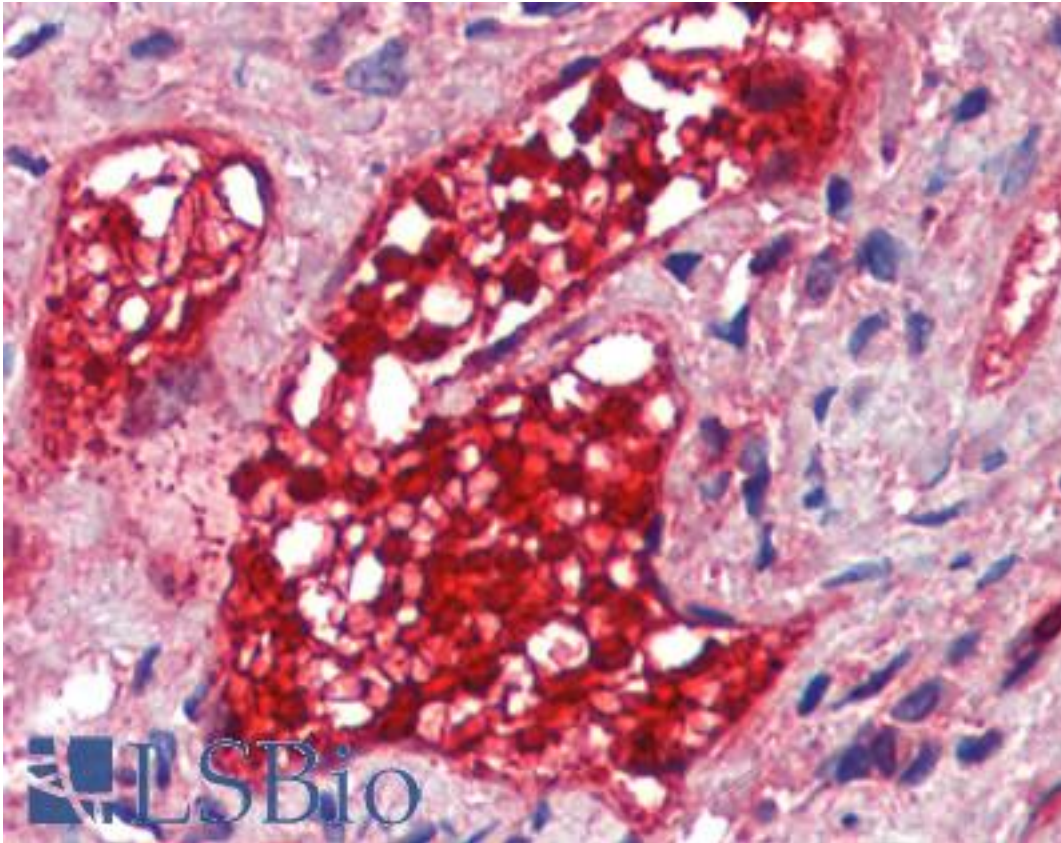
CA1 / Carbonic Anhydrase I Mouse anti-Human Monoclonal (9D6D7) Antibody - LS-B3860 - LSBio	
CatalogID:	LS-B3860
Validation:	This antibody replaces catalog number LS-C108744. It has been validated for use in the following assays: IHC-P.
Target:	carbonic anhydrase I (CA1)
Synonyms:	CA1 Antibody, CAB Antibody, Carbonic anhydrase 1 Antibody, CAR1 Antibody, Carbonate dehydratase I Antibody, Carbonic dehydratase Antibody, CA-I Antibody, Carbonic anhydrase B Antibody, Carbonic anhydrase I Antibody
Host	CA1 antibody was produced in Mouse
Clonality:	Monoclonal
Isotype:	IgG1
Clone Name:	9D6D7
Immunogen Species:	CA1 / Carbonic Anhydrase I antibody was raised against Human
Immunogen:	CA1 / Carbonic Anhydrase I antibody was raised against purified recombinant fragment of CA1(aa25-90) expressed in E. coli.
Specificity:	Human CA1
Reactivity:	Human
Purification:	Ascites
Presentation:	Ascites fluid, 0.03% sodium azide
Recommended Storage:	Long term: -20°C; Short term: +4°C. Avoid repeat freeze-thaw cycles.
Usage Summary:	Immunohistochemistry: LS-B3860 was validated for use in immunohistochemistry on a panel of 21 formalin-fixed, paraffin-embedded (FFPE) human tissues after heat induced antigen retrieval in pH 6.0 citrate buffer. After incubation with the primary antibody, slides were incubated with biotinylated secondary antibody, followed by alkaline phosphatase-streptavidin and chromogen. The stained slides were evaluated by a pathologist to confirm staining specificity. The optimal working dilution for LS-B3860 was determined to be 1:200.
Uses:	IHC - Paraffin (1:200 - 1:300), Western blot (1:500 - 1:2000), ELISA (1:10000) (Optimal dilution to be determined by the researcher)
Size:	50 µl

Immunohistochemistry Image:



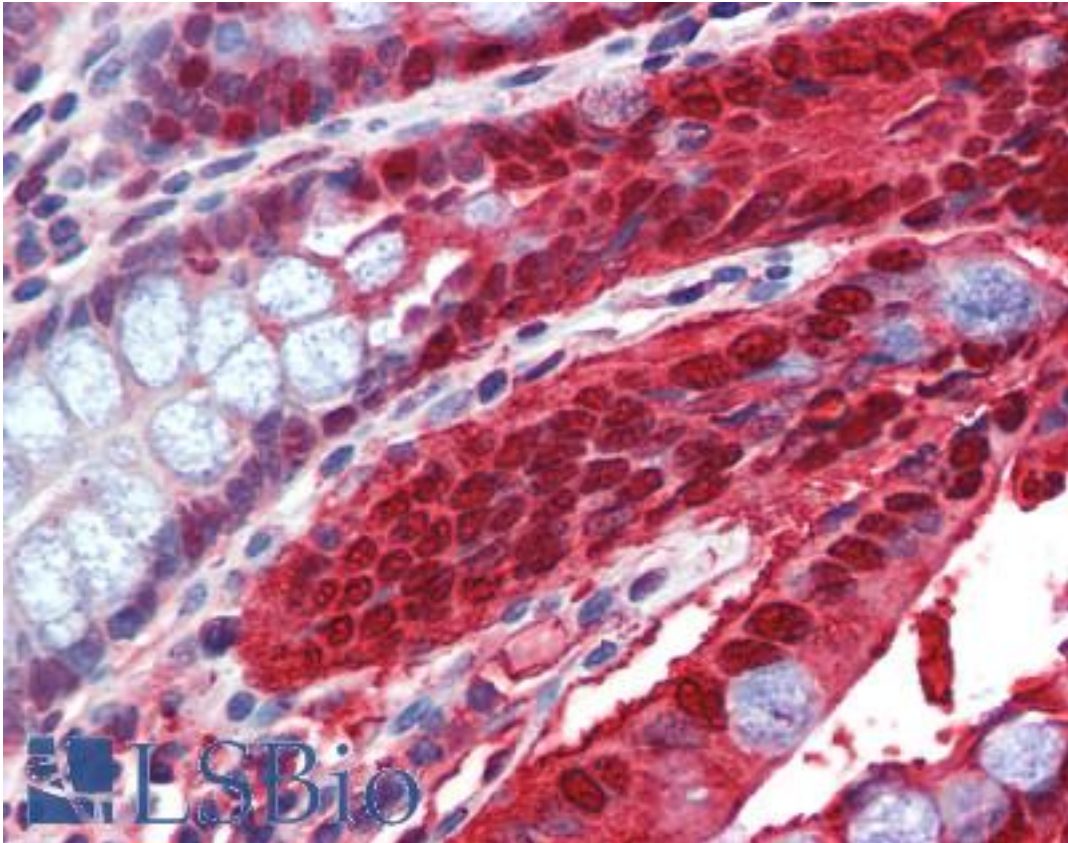
Anti-CA1 / Carbonic Anhydrase I antibody IHC of human spleen. Immunohistochemistry of formalin-fixed, paraffin-embedded tissue after heat-induced antigen retrieval. Antibody LS-B3860 dilution 1:200.

Immunohistochemistry Image:



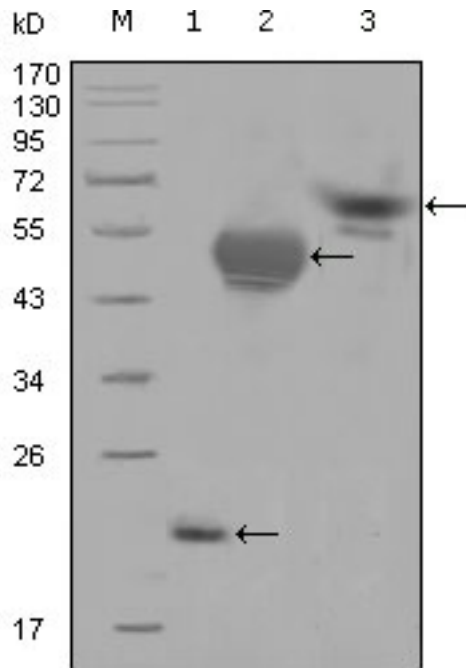
Anti-CA1 / Carbonic Anhydrase I antibody IHC of human vessel, red blood cells.
Immunohistochemistry of formalin-fixed, paraffin-embedded tissue after heat-induced antigen retrieval. Antibody LS-B3860 dilution 1:200.

Immunohistochemistry Image:



Anti-CA1 / Carbonic Anhydrase I antibody IHC of human colon. Immunohistochemistry of formalin-fixed, paraffin-embedded tissue after heat-induced antigen retrieval. Antibody LS-B3860 dilution 1:200.

Western Blot Image:



Western blot of anti-CA1 monoclonal antibody against truncated Trx-CA1 recombinant protein, MBP-CA1(aa25-90) recombinant protein and full length CA1(aa1-261)-hlgGFc transfected CHO-K1 cell lysate(3).

Requested From:

Japan

Laboratory Reagent For In Vitro Research Use Only

Not for resale without prior written consent from LifeSpan BioSciences, Inc.

Created on 9/23/2014

© 2014 LifeSpan BioSciences