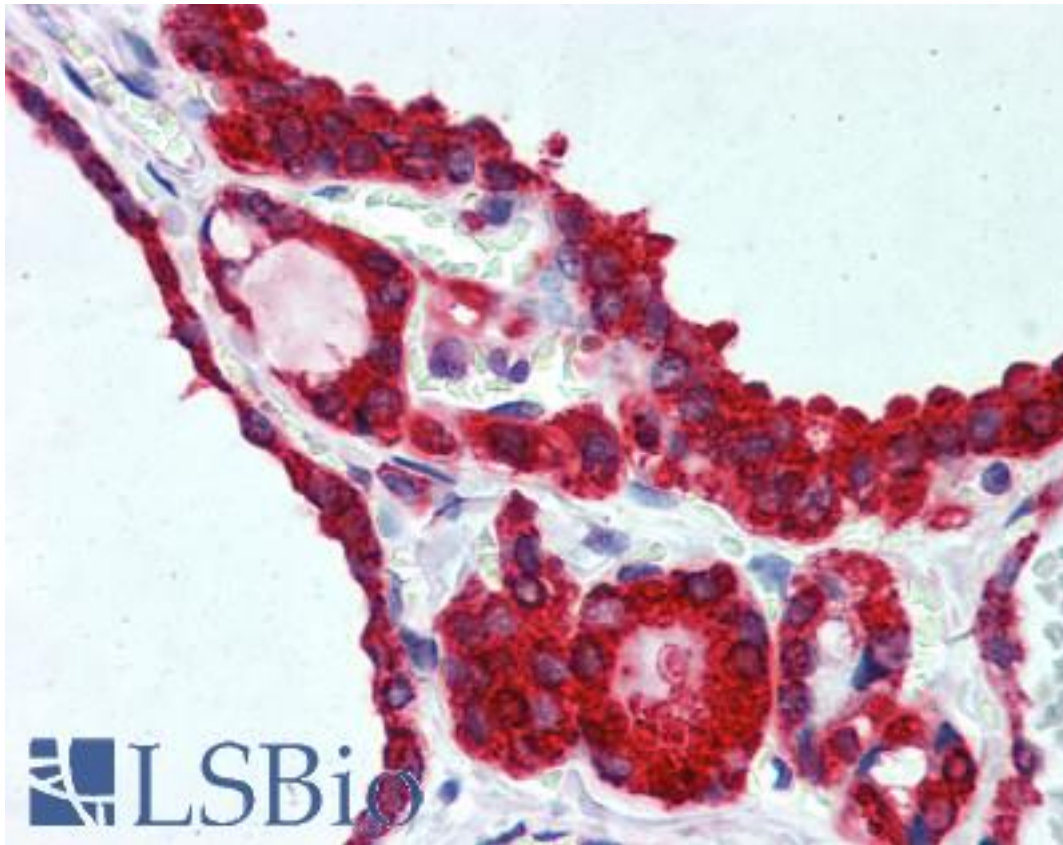


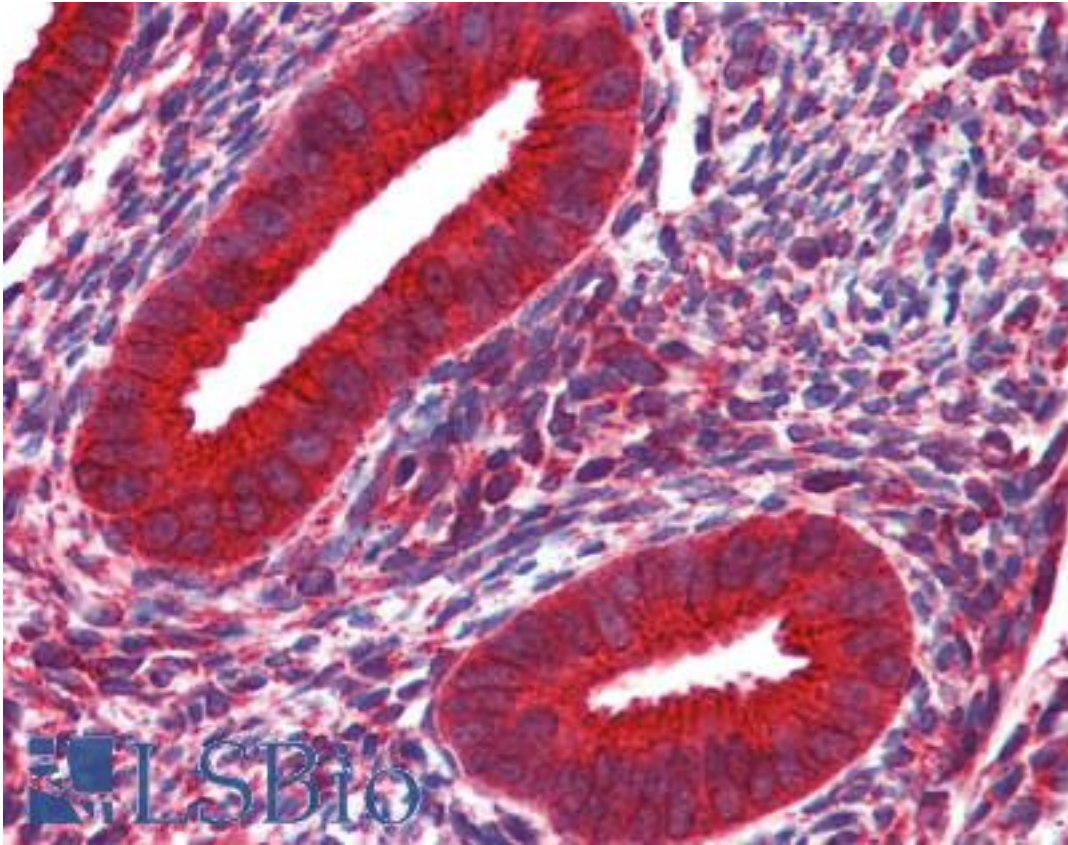
WNT5A Mouse anti-Human Monoclonal (6F2) Antibody - LS-B3859 - LSBio	
<b>CatalogID:</b>	LS-B3859
<b>Validation:</b>	This antibody replaces catalog number LS-C108740. It has been validated for use in the following assays: IHC-P.
<b>Target:</b>	wingless-type MMTV integration site family, member 5A (WNT5A)
<b>Synonyms:</b>	WNT5A Antibody, HWNT5A Antibody, Protein Wnt-5a Antibody, WNT-5A protein Antibody
<b>Family / Subfamily:</b>	WNT / not assigned-WNT
<b>Host</b>	WNT5A antibody was produced in Mouse
<b>Clonality:</b>	Monoclonal
<b>Isotype:</b>	IgG1
<b>Clone Name:</b>	6F2
<b>Immunogen Species:</b>	WNT5A antibody was raised against Human
<b>Immunogen:</b>	WNT5A antibody was raised against purified recombinant fragment of WNT5A expressed in E. coli.
<b>Specificity:</b>	Human WNT5A
<b>Reactivity:</b>	Human
<b>Purification:</b>	Ascites
<b>Presentation:</b>	Ascites fluid, 0.03% sodium azide. Sourced in Ascites.
<b>Recommended Storage:</b>	Long term: -20°C; Short term: +4°C. Avoid repeat freeze-thaw cycles.
<b>Usage Summary:</b>	Immunohistochemistry: LS-B3859 was validated for use in immunohistochemistry on a panel of 21 formalin-fixed, paraffin-embedded (FFPE) human tissues after heat induced antigen retrieval in pH 6.0 citrate buffer. After incubation with the primary antibody, slides were incubated with biotinylated secondary antibody, followed by alkaline phosphatase-streptavidin and chromogen. The stained slides were evaluated by a pathologist to confirm staining specificity. The optimal working dilution for LS-B3859 was determined to be 1:200.
<b>Uses:</b>	IHC - Paraffin (1:200 - 1:400), Immunofluorescence (1:200 - 1:1000), Western blot (1:500 - 1:2000), ELISA (1:10000) (Optimal dilution to be determined by the researcher)
<b>Size:</b>	50 µl

**Immunohistochemistry Image:**



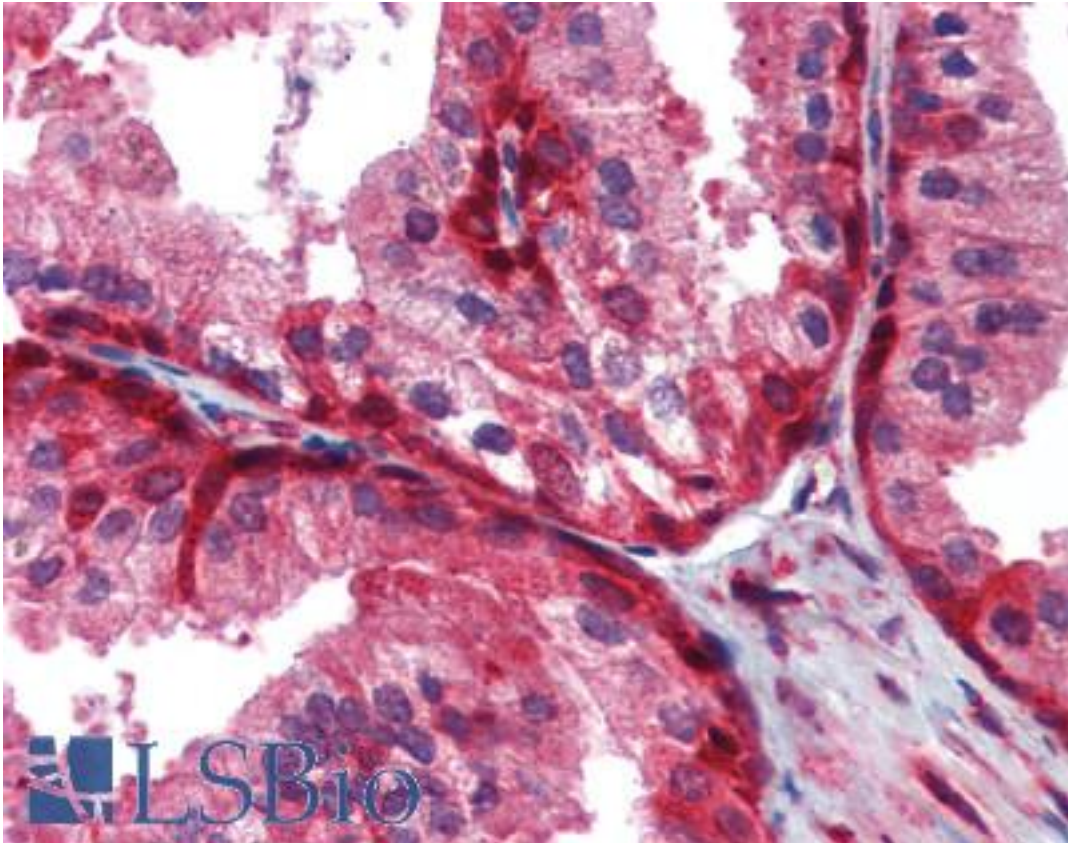
Anti-WNT5A antibody IHC of human thyroid. Immunohistochemistry of formalin-fixed, paraffin-embedded tissue after heat-induced antigen retrieval. Antibody LS-B3859 dilution 1:200.

**Immunohistochemistry Image:**



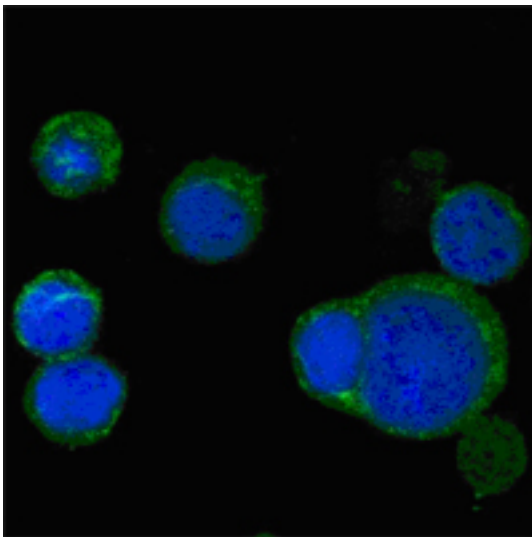
Anti-WNT5A antibody IHC of human uterus. Immunohistochemistry of formalin-fixed, paraffin-embedded tissue after heat-induced antigen retrieval. Antibody LS-B3859 dilution 1:200.

**Immunohistochemistry Image:**



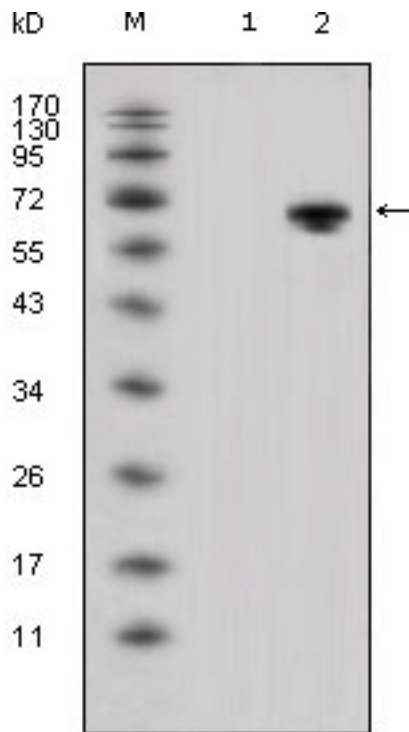
Anti-WNT5A antibody IHC of human prostate. Immunohistochemistry of formalin-fixed, paraffin-embedded tissue after heat-induced antigen retrieval. Antibody LS-B3859 dilution 1:200.

**Immunocytochemistry Image:**



Confocal immunofluorescence of PC-12 cells using anti-WNT5A monoclonal antibody(green), showing cytoplasmic localization. Blue: DRAQ5 fluorescent DNA dye.

**Western Blot Image:**



Western blot of anti-WNT5A monoclonal antibody against HEK293 (1) and WNT5A-hlgGfc transfected HEK293 cell lysate(2).

**Requested From:**

Japan

Laboratory Reagent For In Vitro Research Use Only

Not for resale without prior written consent from LifeSpan BioSciences, Inc.

Created on 9/23/2014

© 2014 LifeSpan BioSciences