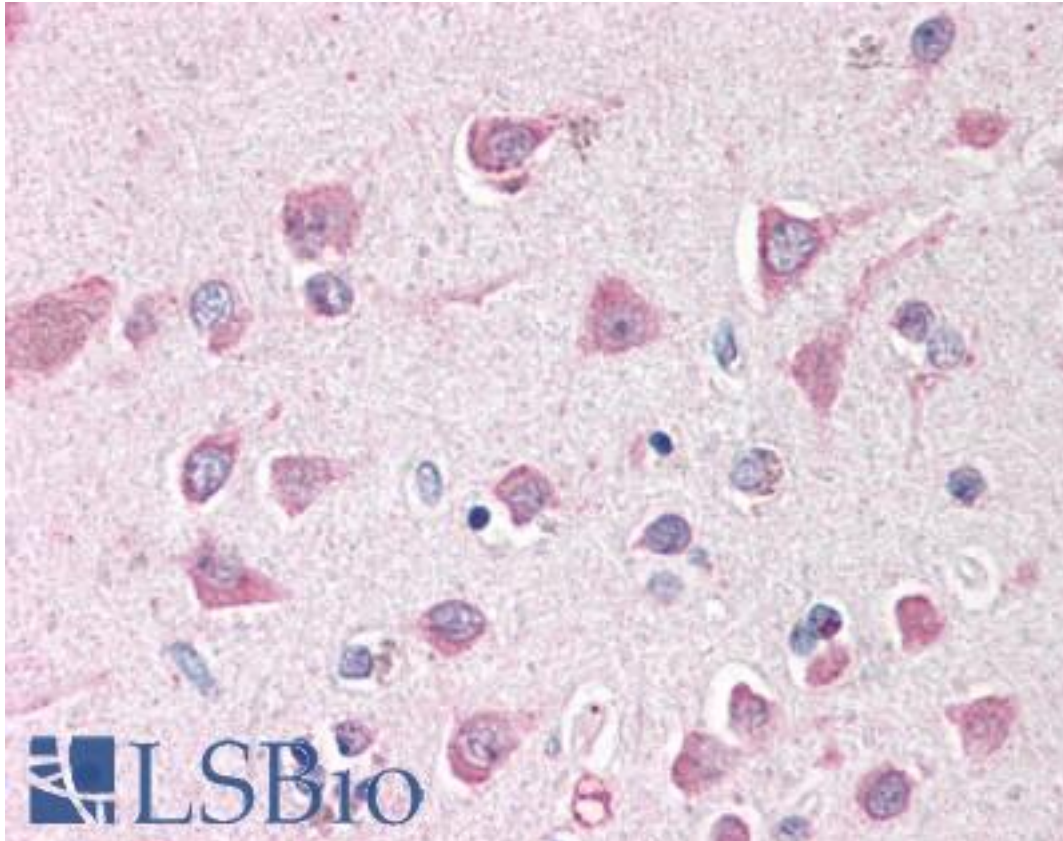


**ING3 Goat anti-Human Polyclonal (aa294-304) Antibody - LS-B385 - LSBio**

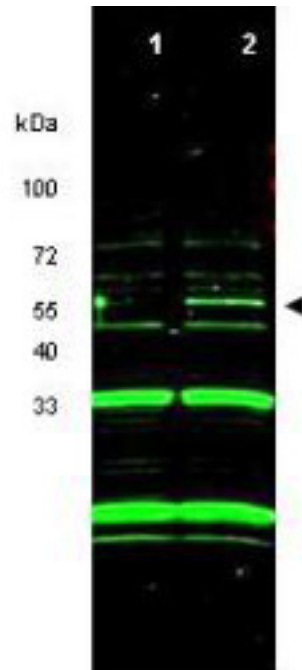
<b>CatalogID:</b>	LS-B385
<b>Validation:</b>	This antibody replaces catalog number LS-C19037. It has been validated for use in the following assays: IHC.
<b>Target:</b>	inhibitor of growth family, member 3 (ING3)
<b>Synonyms:</b>	ING3 Antibody, p47ING3 Antibody, Inhibitor of growth protein 3 Antibody, MEAF4 Antibody, Eaf4 Antibody, p47 Antibody
<b>Host</b>	ING3 antibody was produced in Goat
<b>Clonality:</b>	Polyclonal
<b>Immunogen Species:</b>	ING3 antibody was raised against Human
<b>Antigen Type:</b>	Synthetic peptide
<b>Immunogen:</b>	ING3 antibody was raised against synthetic peptide from human ING3.
<b>Specificity:</b>	aa 294-304 of Human ING3 protein (Inhibitor of growth family, member 3). This sequence only shows homology to isoform 1 for ING3.
<b>Epitope:</b>	aa294-304
<b>Reactivity:</b>	Human
<b>Purification:</b>	Immunoaffinity purified
<b>Presentation:</b>	0.02 M potassium phosphate, 0.15 M sodium chloride, pH 7.2, 0.01% sodium azide.
<b>Recommended Storage:</b>	+4°C or -20°C, Avoid repeated freezing and thawing.
<b>Usage Summary:</b>	Immunohistochemistry: LS-B385 was validated for use in immunohistochemistry on a panel of 21 formalin-fixed, paraffin-embedded (FFPE) human tissues after heat induced antigen retrieval in pH 6.0 citrate buffer. After incubation with the primary antibody, slides were incubated with biotinylated secondary antibody, followed by alkaline phosphatase-streptavidin and chromogen. The stained slides were evaluated by a pathologist to confirm staining specificity. The optimal working concentration for LS-B385 was determined to be 2.5 ug/ml.
<b>Uses:</b>	IHC - Paraffin (2.5 µg/ml), Immunofluorescence, Western blot (1:200 - 1:2000), ELISA (1:10000 - 1:40000) (Optimal dilution to be determined by the researcher)
<b>Size:</b>	50 µg
<b>Concentration:</b>	1 mg/ml

**Immunohistochemistry Image:**



Anti-ING3 antibody IHC of human brain, cortex. Immunohistochemistry of formalin-fixed, paraffin-embedded tissue after heat-induced antigen retrieval. Antibody LS-B385 concentration 5 ug/ml.

**Western Blot Image:**



Anti-ING3 Antibody - Western Blot. Western blot of purified anti-ING3 antibody shows detection of a band at ~55 kD corresponding to ING3 in RKO cells transfected with ING3 (lane 2). Control RKO cells do not show detection of this specific band (lane 1). The identity of the non-specific bands at 33 kD and 20 kD has not been determined. Each lane contains approximately 10 ug of RKO whole cell lysate (ATCC# CRL-2577 - human colon cancer) separated on a 4-20% Tris-Glycine gel by SDS-PAGE and transferred to nitrocellulose. After blocking with 5% NF dry milk, the membrane was probed with the primary antibody diluted to 1:1000. Incubation was at 4C overnight followed by washes and reaction with a 1:20000 dilution of IRDye800 conjugated Rb-a-Goat IgG [H&L] MXHu ( for 45 min at room temperature. IRDye800 fluorescence image was captured using the Odyssey Infrared Imaging System developed by LI-COR. IRDye is a trademark of LI-COR, Inc. Other detection systems will yield similar results.

**Requested From:**

Japan

Laboratory Reagent For In Vitro Research Use Only

Not for resale without prior written consent from LifeSpan BioSciences, Inc.

Created on 9/23/2014

© 2014 LifeSpan BioSciences