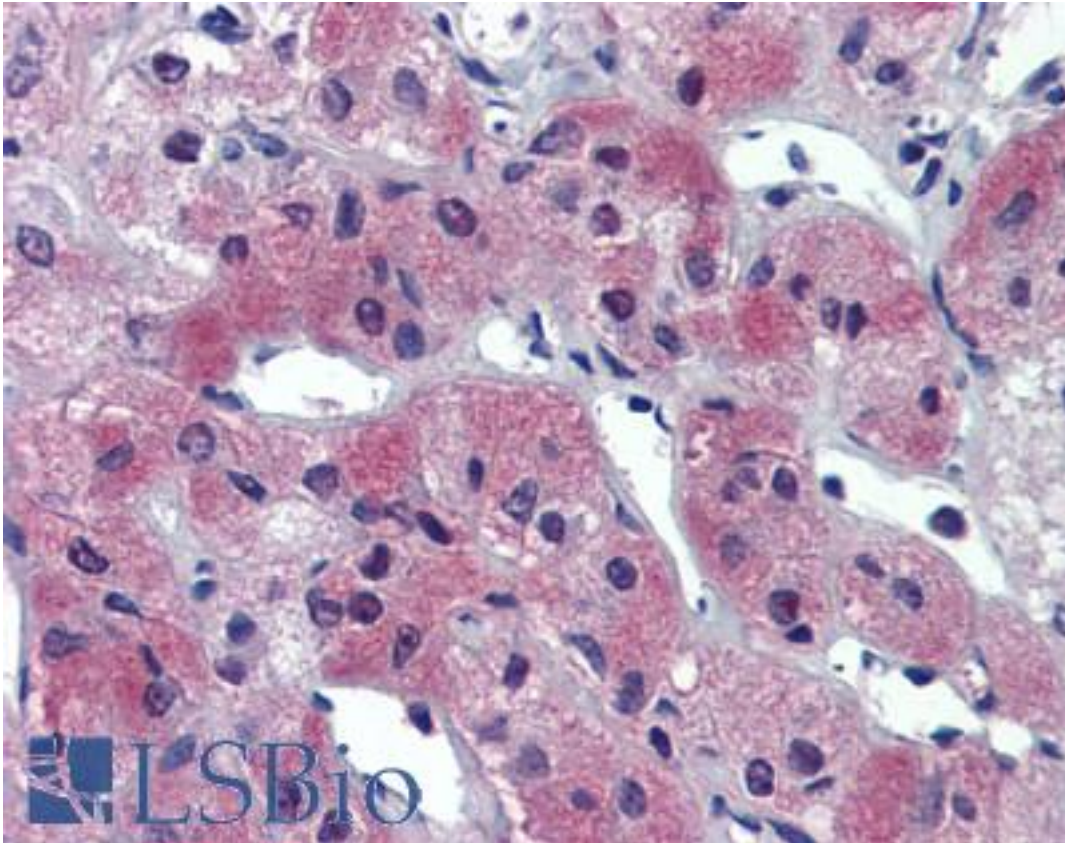


AIPL1 Rabbit anti-Human Polyclonal (C-Terminus) Antibody - LS-B3848 - LSBio

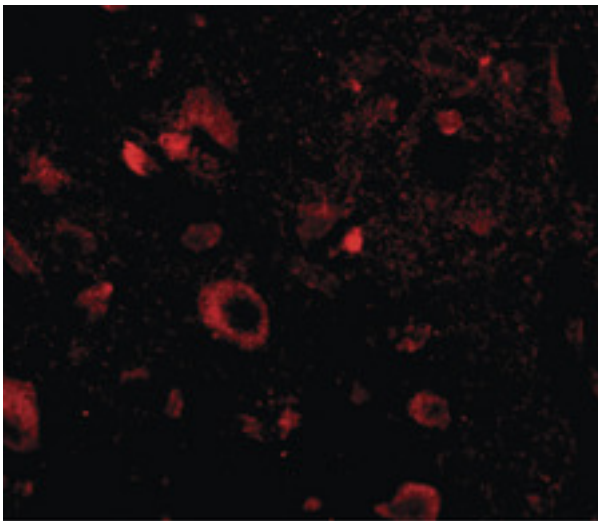
CatalogID:	LS-B3848
Validation:	This antibody replaces catalog number LS-C82866. It has been validated for use in the following assays: IHC-P.
Target:	aryl hydrocarbon receptor interacting protein-like 1 (AIPL1)
Synonyms:	AIPL1 Antibody, AIPL2 Antibody, LCA4 Antibody
Host	AIPL1 antibody was produced in Rabbit
Clonality:	Polyclonal
Immunogen Species:	AIPL1 antibody was raised against Human
Antigen Type:	Synthetic peptide
Immunogen:	AIPL1 antibody was raised against a 17 amino acid peptide near the carboxy terminus of human Aipl1.
Epitope:	C-Terminus
Reactivity:	Human, Mouse
Purification:	Immunoaffinity purified
Presentation:	PBS containing 0.02% sodium azide
Recommended Storage:	Short term 4°C, long term aliquot and store at -20°C, avoid freeze thaw cycles. Store undiluted.
Uses:	IHC - Paraffin (5 µg/ml), Western blot (1 - 2 µg/ml), ELISA (Optimal dilution to be determined by the researcher)
Size:	50 µg
Concentration:	1 mg/ml

Immunohistochemistry Image:



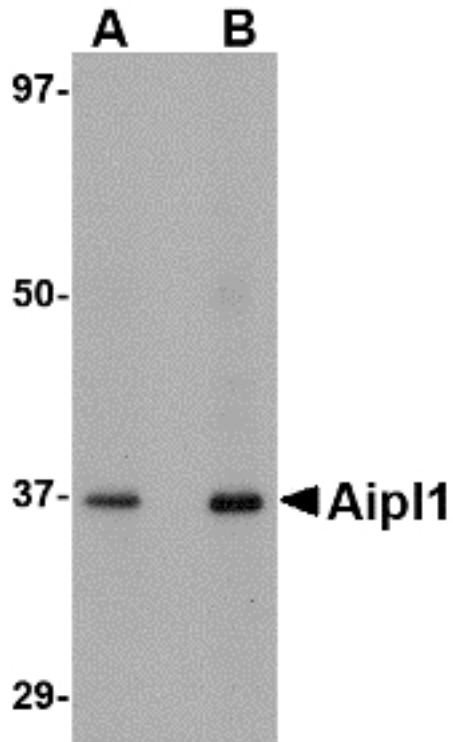
Anti-AIPL1 antibody IHC of human adrenal. Immunohistochemistry of formalin-fixed, paraffin-embedded tissue after heat-induced antigen retrieval. Antibody LS-B3848 concentration 5 ug/ml.

Immunofluorescence Image:



Immunofluorescence of aipl1 in human brain tissue with aipl1 antibody at 20 ug/ml.

Western Blot Image:



Western blot of Aipl1 in human brain tissue lysate with Aipl1 antibody at (A) 1 and (B) 2 ug/ml.

Requested From:

Japan

Laboratory Reagent For In Vitro Research Use Only

Not for resale without prior written consent from LifeSpan BioSciences, Inc.

Created on 9/23/2014

© 2014 LifeSpan BioSciences