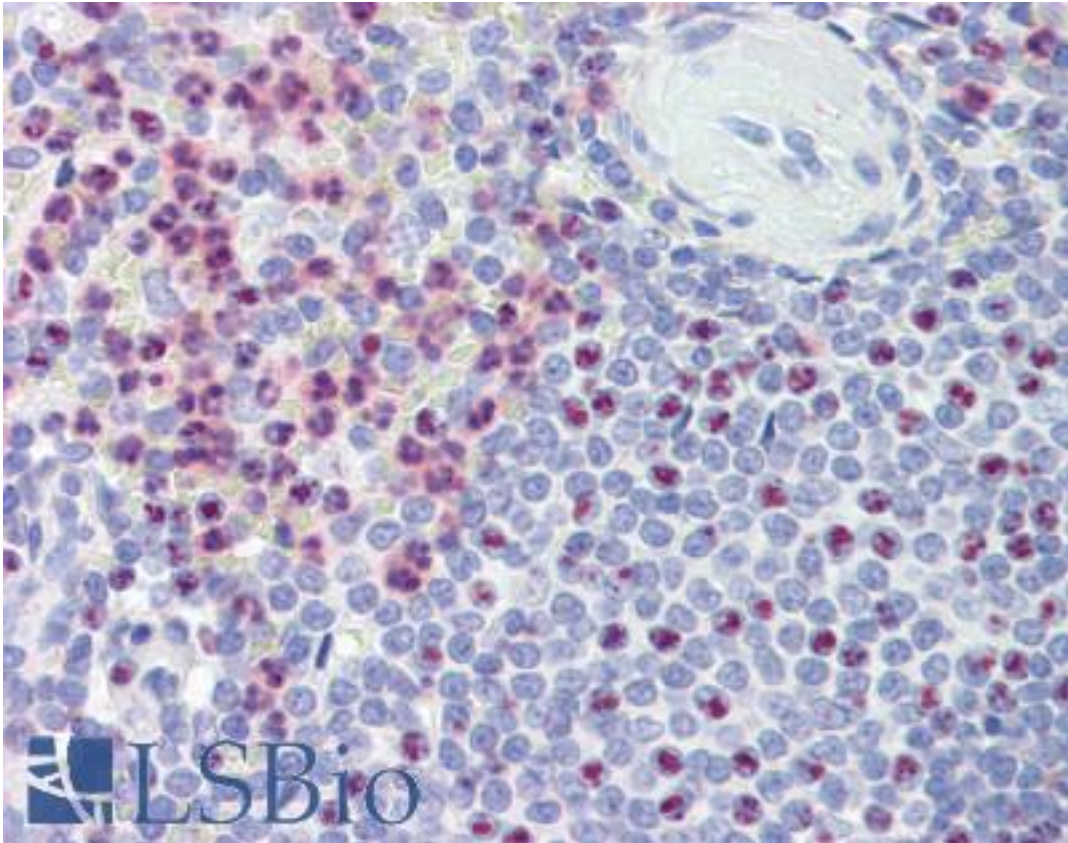


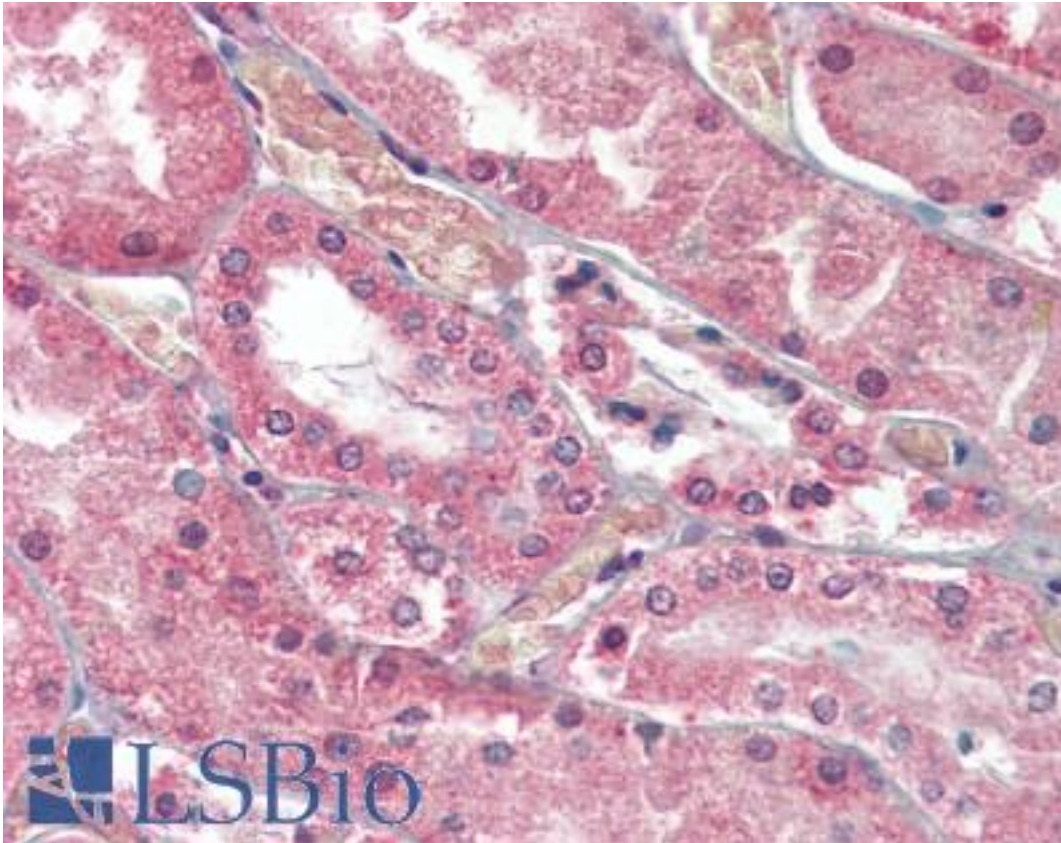
PKD1 / Polycystin Goat anti-Human Polyclonal Antibody - LS-B3847 - LSBio	
<b>CatalogID:</b>	LS-B3847
<b>Validation:</b>	This antibody replaces catalog number LS-C108265. It has been validated for use in the following assays: IHC-P.
<b>Target:</b>	polycystic kidney disease 1 (autosomal dominant) (PKD1)
<b>Synonyms:</b>	PKD1 Antibody, PBP Antibody, Polycystin Antibody, TRPP1 Antibody, Pc-1 Antibody, Polycystin 1 Antibody, Polycystin-1 Antibody
<b>Host</b>	PKD1 antibody was produced in Goat
<b>Clonality:</b>	Polyclonal
<b>Immunogen Species:</b>	PKD1 / Polycystin antibody was raised against Human
<b>Antigen Type:</b>	Synthetic peptide
<b>Immunogen:</b>	PKD1 / Polycystin antibody was raised against synthetic peptide C-RTPLRAKNKVHP from the C-terminus of human PKD1 (NP_001009944.1; NP_000287.2). Percent identity by BLAST analysis: Human, Gorilla, Gibbon (100%); Marmoset, Panda, Cat, Dog, Horse (83%).
<b>Specificity:</b>	Human PKD1. This antibody is expected to recognize both reported isoforms (NP_001009944.1 and NP_000287.2).
<b>Reactivity:</b>	Human, Gorilla, Gibbon
<b>Purification:</b>	Immunoaffinity purified
<b>Presentation:</b>	Tris-buffered saline, pH 7.3, 0.5% BSA, 0.02% sodium azide
<b>Recommended Storage:</b>	Store at -20°C. Minimize freezing and thawing.
<b>Usage Summary:</b>	Immunohistochemistry: LS-B3847 was validated for use in immunohistochemistry on a panel of 21 formalin-fixed, paraffin-embedded (FFPE) human tissues after heat induced antigen retrieval in pH 6.0 citrate buffer. After incubation with the primary antibody, slides were incubated with biotinylated secondary antibody, followed by alkaline phosphatase-streptavidin and chromogen. The stained slides were evaluated by a pathologist to confirm staining specificity. The optimal working concentration for LS-B3847 was determined to be 3.75ug/ml.
<b>Uses:</b>	IHC - Paraffin (3.75 µg/ml) (Optimal dilution to be determined by the researcher)
<b>Size:</b>	50 µg
<b>Concentration:</b>	0.5 mg/ml

**Immunohistochemistry Image:**



Anti-PKD1 antibody IHC of human spleen. Immunohistochemistry of formalin-fixed, paraffin-embedded tissue after heat-induced antigen retrieval. Antibody LS-B3847 concentration 3.75 ug/ml.

**Immunohistochemistry Image:**



Anti-PKD1 antibody IHC of human kidney. Immunohistochemistry of formalin-fixed, paraffin-embedded tissue after heat-induced antigen retrieval. Antibody LS-B3847 concentration 3.75 ug/ml.

**Requested From:**

Japan

Laboratory Reagent For In Vitro Research Use Only

Not for resale without prior written consent from LifeSpan BioSciences, Inc.

Created on 9/23/2014

© 2014 LifeSpan BioSciences