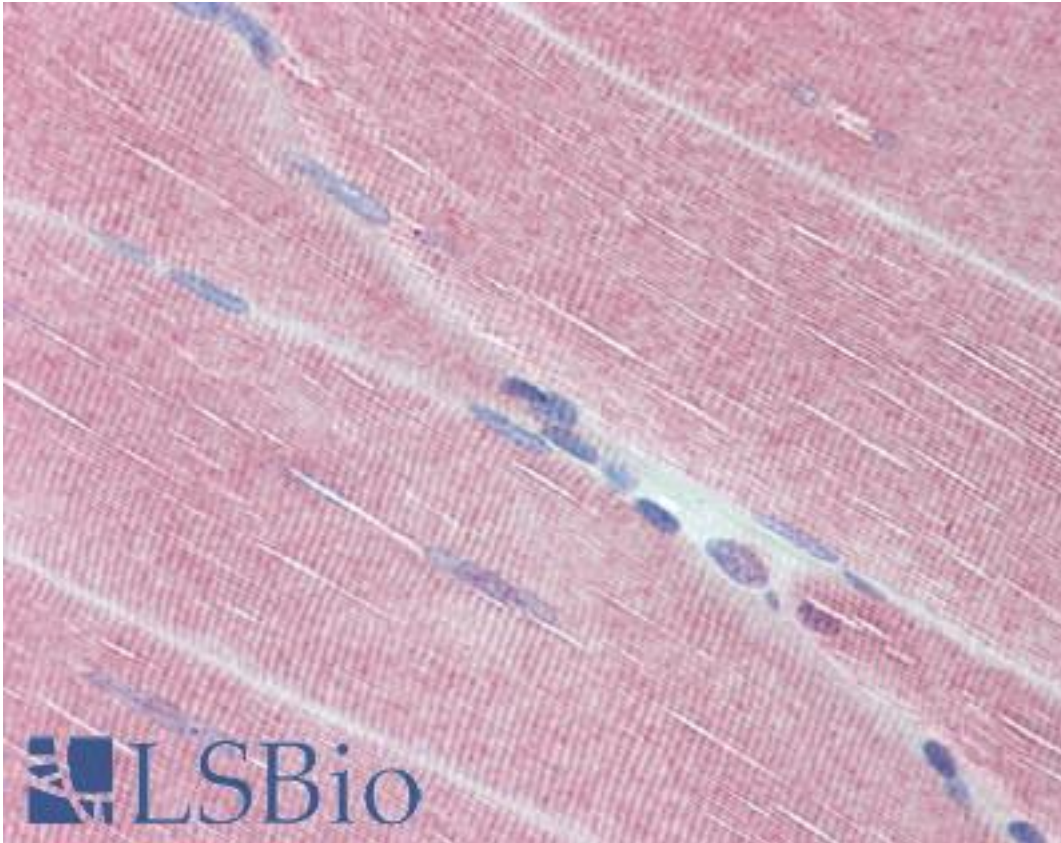


PPP1R12A / MYPT1 Goat anti-Human Polyclonal Antibody - LS-B3836 - LSBio	
CatalogID:	LS-B3836
Validation:	This antibody replaces catalog number LS-C108241. It has been validated for use in the following assays: IHC-P.
Target:	protein phosphatase 1, regulatory subunit 12A (PPP1R12A)
Synonyms:	PPP1R12A Antibody, M130 Antibody, MYPT1 Antibody, MBS Antibody, Myosin binding subunit Antibody
Host	PPP1R12A antibody was produced in Goat
Clonality:	Polyclonal
Immunogen Species:	PPP1R12A / MYPT1 antibody was raised against Human
Immunogen:	PPP1R12A / MYPT1 antibody was raised against synthetic peptide from human PPP1R12A / MYPT1. Percent identity by BLAST analysis: Human, Gorilla, Orangutan, Gibbon, Monkey, Marmoset, Mouse, Rat, Elephant, Panda, Bovine, Dog, Bat, Horse, Opossum, Platypus (100%); Hamster (93%); Rabbit (86%).
Specificity:	Human PPP1R12A / MYPT1.
Reactivity:	Human, Gorilla, Orangutan, Gibbon, Monkey, Mouse, Rat, Bat, Bovine, Dog, Horse
Predicted Reactivity:	Hamster
Purification:	Immunoaffinity purified
Presentation:	Tris-buffered saline, pH 7.3, 0.5% BSA, 0.02% sodium azide
Recommended Storage:	Store at -20°C. Minimize freezing and thawing.
Usage Summary:	Immunohistochemistry: LS-B3836 was validated for use in immunohistochemistry on a panel of 21 formalin-fixed, paraffin-embedded (FFPE) human tissues after heat induced antigen retrieval in pH 6.0 citrate buffer. After incubation with the primary antibody, slides were incubated with biotinylated secondary antibody, followed by alkaline phosphatase-streptavidin and chromogen. The stained slides were evaluated by a pathologist to confirm staining specificity. The optimal working concentration for LS-B3836 was determined to be 3.75ug/ml.
Uses:	IHC - Paraffin (3.75 µg/ml) (Optimal dilution to be determined by the researcher)
Size:	50 µg
Concentration:	0.5 mg/ml

Immunohistochemistry Image:



Anti-PPP1R12A / MYPT1 antibody IHC of human skeletal muscle. Immunohistochemistry of formalin-fixed, paraffin-embedded tissue after heat-induced antigen retrieval. Antibody LS-B3836 concentration 3.75 ug/ml.

Requested From:

Japan

Laboratory Reagent For In Vitro Research Use Only

Not for resale without prior written consent from LifeSpan BioSciences, Inc.

Created on 9/23/2014

© 2014 LifeSpan BioSciences