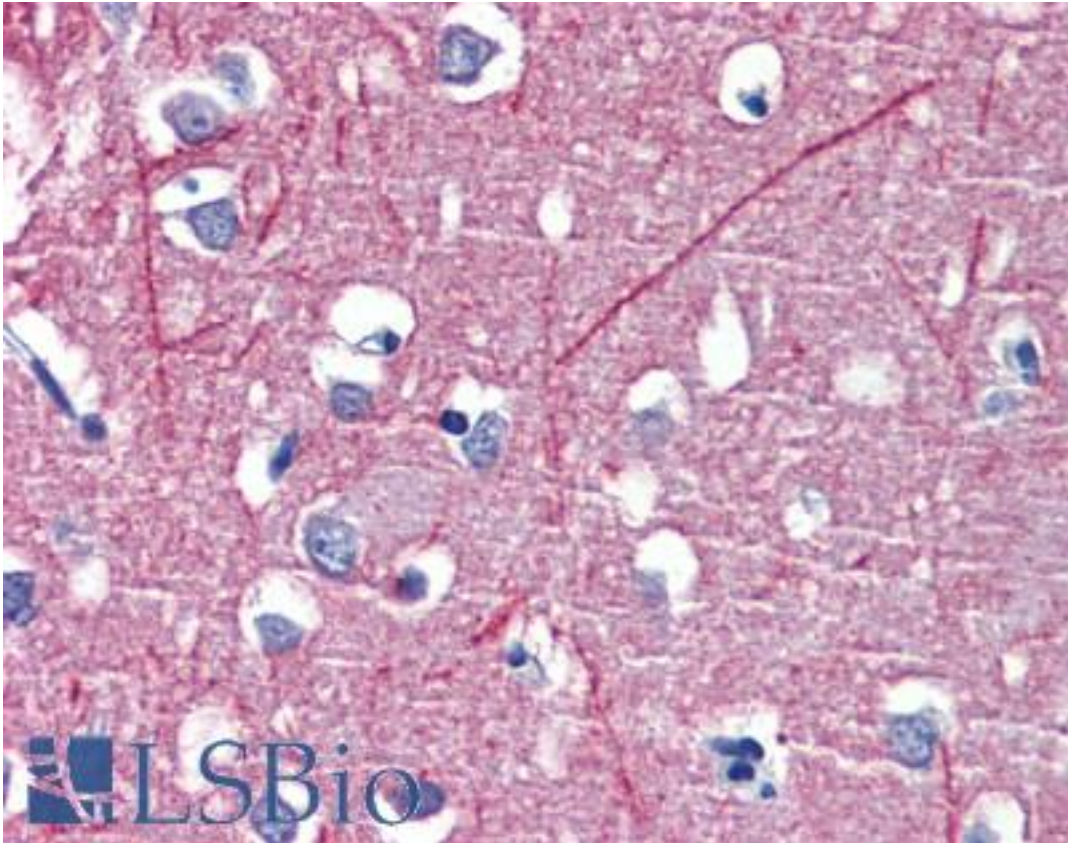


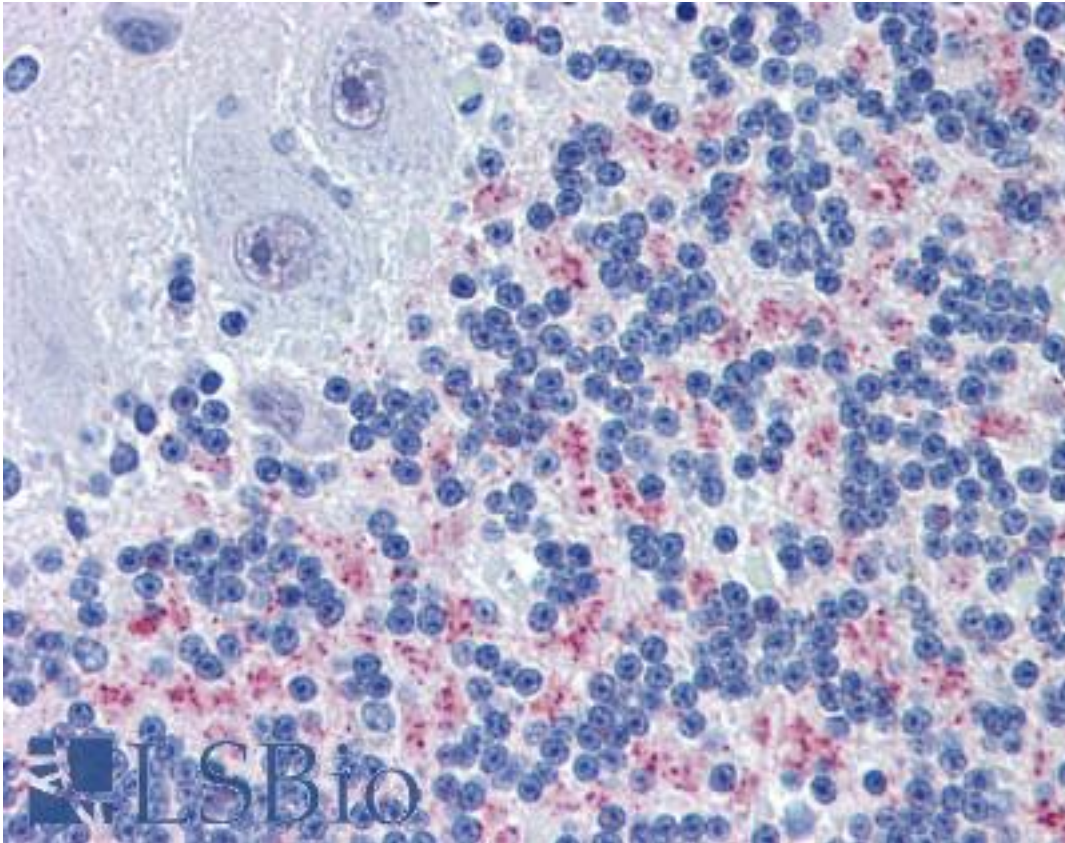
PSMB5 / MB1 Goat anti-Human Polyclonal Antibody - LS-B3830 - LSBio	
<b>CatalogID:</b>	LS-B3830
<b>Validation:</b>	This antibody replaces catalog number LS-C108235. It has been validated for use in the following assays: IHC-P.
<b>Target:</b>	proteasome (prosome, macropain) subunit, beta type, 5 (PSMB5)
<b>Synonyms:</b>	PSMB5 Antibody, Proteasome chain 6 Antibody, Proteasome subunit MB1 Antibody, Proteasome subunit X Antibody, Proteasome catalytic subunit 3 Antibody, Macropain epsilon chain Antibody, MB1 Antibody, LMPX Antibody, Proteasome beta 5 subunit Antibody, Proteasome epsilon chain Antibody, Proteasome subunit beta type-5 Antibody
<b>Family / Subfamily:</b>	Protease / Threonine T1
<b>Host</b>	PSMB5 antibody was produced in Goat
<b>Clonality:</b>	Polyclonal
<b>Immunogen Species:</b>	PSMB5 / MB1 antibody was raised against Human
<b>Immunogen:</b>	PSMB5 / MB1 antibody was raised against synthetic peptide from human PSMB5 / MB1. Percent identity by BLAST analysis: Human, Gorilla, Orangutan, Gibbon, Monkey, Marmoset, Mouse, Rat, Hamster, Panda, Dog, Bat, Bovine, Horse, Rabbit, Pig, Opossum, Platypus, Xenopus, Catfish, Smelt, Stickleback, Pufferfish, Zebrafish, Sea anemone (100%); Salmon, Seq squirt, Mosquito, Water flea, Capsaspora (92%); Chicken, Trout, Ant, Beetle, Trichoplax, Tick, Tunicate (83%).
<b>Specificity:</b>	Human PSMB5.
<b>Reactivity:</b>	Human, Gorilla, Orangutan, Gibbon, Monkey, Mouse, Rat, Bat, Bovine, Dog, Hamster, Horse, Pig, Rabbit, Xenopus, Zebrafish
<b>Predicted Reactivity:</b>	Insect
<b>Purification:</b>	Immunoaffinity purified
<b>Presentation:</b>	Tris-buffered saline, pH 7.3, 0.5% BSA, 0.02% sodium azide
<b>Recommended Storage:</b>	Store at -20°C. Minimize freezing and thawing.
<b>Usage Summary:</b>	Immunohistochemistry: LS-B3830 was validated for use in immunohistochemistry on a panel of 21 formalin-fixed, paraffin-embedded (FFPE) human tissues after heat induced antigen retrieval in pH 6.0 citrate buffer. After incubation with the primary antibody, slides were incubated with biotinylated secondary antibody, followed by alkaline phosphatase-streptavidin and chromogen. The stained slides were evaluated by a pathologist to confirm staining specificity. The optimal working concentration for LS-B3830 was determined to be 3.75ug/ml.
<b>Uses:</b>	IHC - Paraffin (3.75 µg/ml) (Optimal dilution to be determined by the researcher)
<b>Size:</b>	50 µg
<b>Concentration:</b>	0.5 mg/ml

**Immunohistochemistry Image:**



Anti-PSMB5 antibody IHC of human brain, cortex. Immunohistochemistry of formalin-fixed, paraffin-embedded tissue after heat-induced antigen retrieval. Antibody LS-B3830 concentration 3.75 ug/ml.

**Immunohistochemistry Image:**



Anti-PSMB5 antibody IHC of human brain, cerebellum. Immunohistochemistry of formalin-fixed, paraffin-embedded tissue after heat-induced antigen retrieval. Antibody LS-B3830 concentration 3.75 ug/ml.

**Requested From:**

Japan

Laboratory Reagent For In Vitro Research Use Only

Not for resale without prior written consent from LifeSpan BioSciences, Inc.

Created on 9/23/2014

© 2014 LifeSpan BioSciences