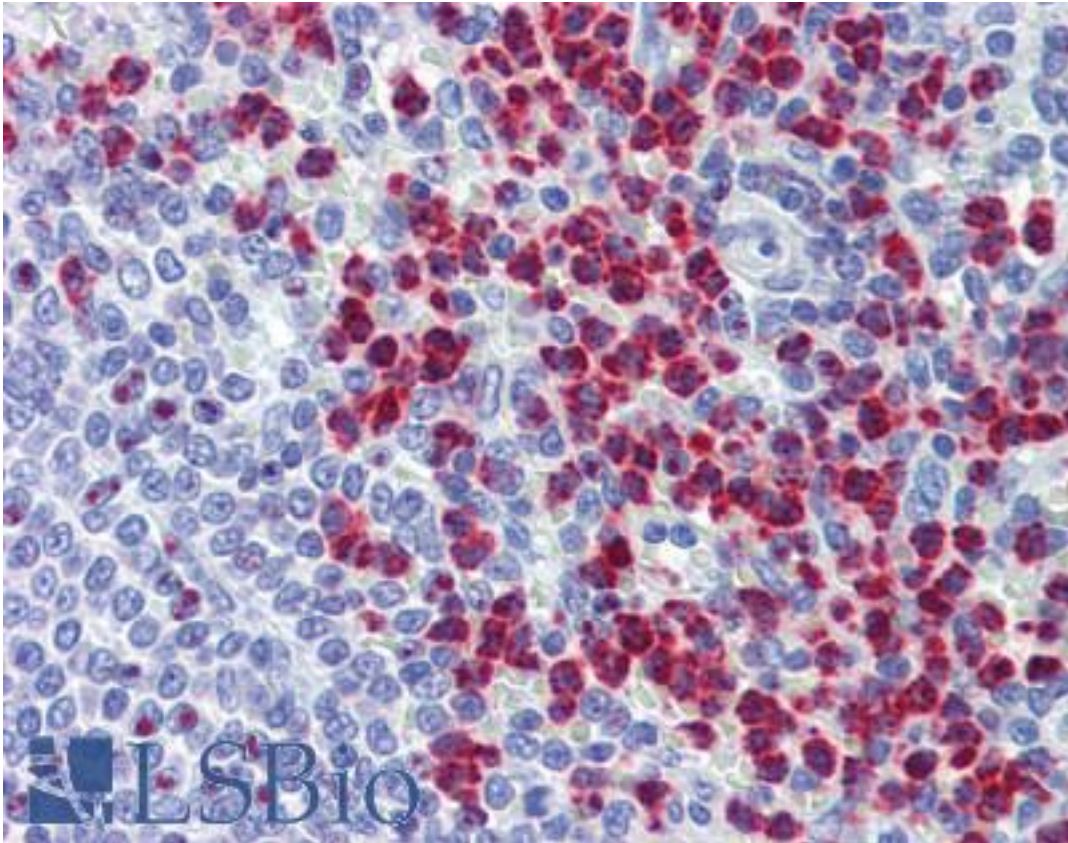


RASSF2 Goat anti-Human Polyclonal Antibody - LS-B3828 - LSBio

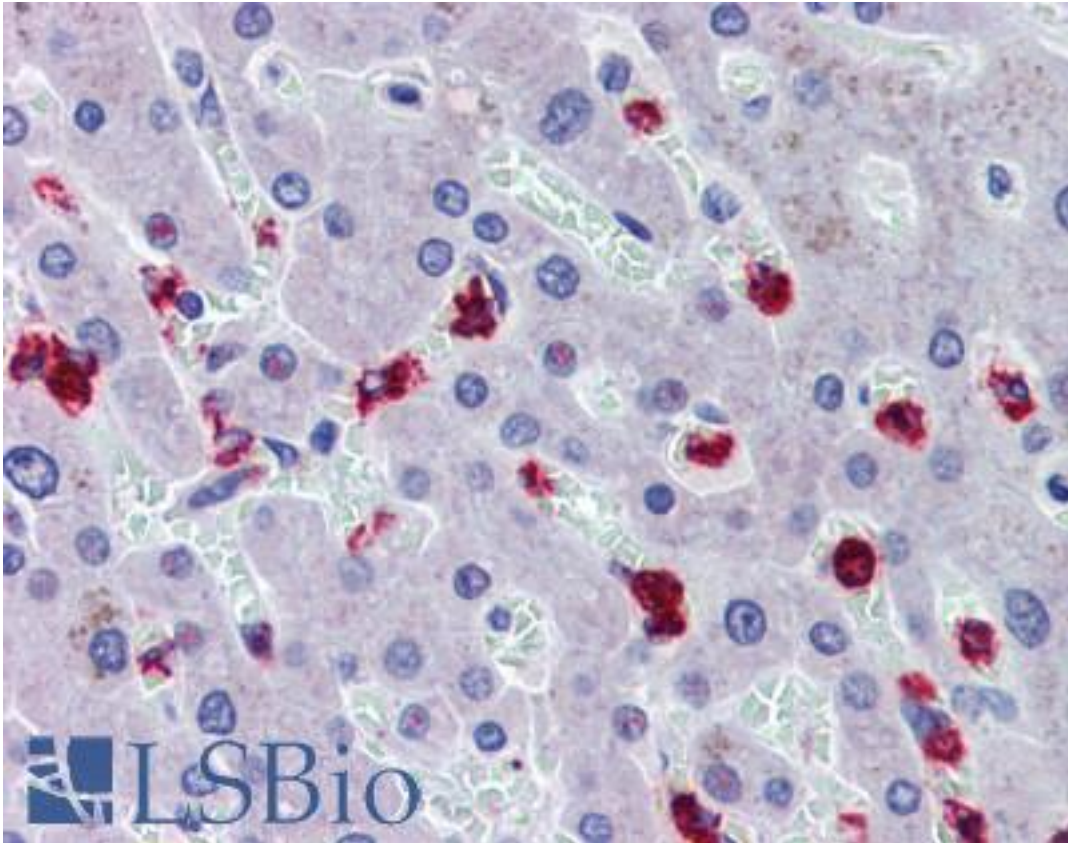
CatalogID:	LS-B3828
Validation:	This antibody replaces catalog number LS-C108230. It has been validated for use in the following assays: IHC-P.
Target:	Ras association (RalGDS/AF-6) domain family member 2 (RASSF2)
Synonyms:	RASSF2 Antibody, CENP-34 Antibody, KIAA0168 Antibody, RASFADIN Antibody, Centromere protein 34 Antibody
Host	RASSF2 antibody was produced in Goat
Clonality:	Polyclonal
Immunogen Species:	RASSF2 antibody was raised against Human
Antigen Type:	Synthetic peptide
Immunogen:	RASSF2 antibody was raised against synthetic peptide PCGQDKYISKNE from the N-terminus of human RASSF2 (NP_055552.1; NP_739580.1). Percent identity by BLAST analysis: Human, Gorilla, Gibbon, Marmoset, Elephant, Panda, Dog, Bovine, Horse, Rabbit, Pig, Opossum (100%); Bat, Xenopus (92%); Chicken, Frog (83%).
Specificity:	Human RASSF2. Reported variants represent identical protein: NP_055552.1; NP_739580.1.
Reactivity:	Human, Gorilla, Gibbon, Monkey, Bovine, Dog, Horse, Pig, Rabbit
Predicted Reactivity:	Bat, Xenopus
Purification:	Immunoaffinity purified
Presentation:	Tris-buffered saline, pH 7.3, 0.5% BSA, 0.02% sodium azide
Recommended Storage:	Store at -20°C. Minimize freezing and thawing.
Usage Summary:	Immunohistochemistry: LS-B3828 was validated for use in immunohistochemistry on a panel of 21 formalin-fixed, paraffin-embedded (FFPE) human tissues after heat induced antigen retrieval in pH 6.0 citrate buffer. After incubation with the primary antibody, slides were incubated with biotinylated secondary antibody, followed by alkaline phosphatase-streptavidin and chromogen. The stained slides were evaluated by a pathologist to confirm staining specificity. The optimal working concentration for LS-B3828 was determined to be 3.75ug/ml.
Uses:	IHC - Paraffin (3.75 µg/ml) (Optimal dilution to be determined by the researcher)
Size:	50 µg
Concentration:	0.5 mg/ml

Immunohistochemistry Image:



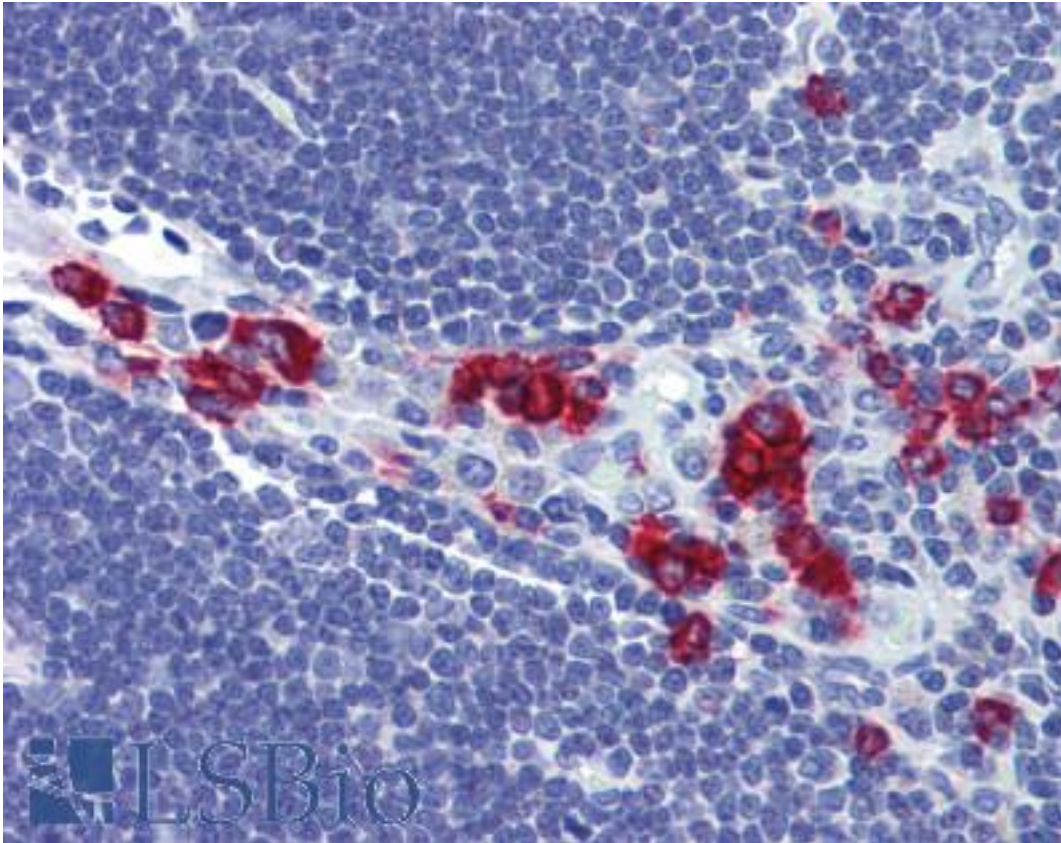
Anti-RASSF2 antibody IHC of human spleen. Immunohistochemistry of formalin-fixed, paraffin-embedded tissue after heat-induced antigen retrieval. Antibody LS-B3828 concentration 3.75 ug/ml.

Immunohistochemistry Image:



Anti-RASSF2 antibody IHC of human liver. Immunohistochemistry of formalin-fixed, paraffin-embedded tissue after heat-induced antigen retrieval. Antibody LS-B3828 concentration 3.75 ug/ml.

Immunohistochemistry Image:



Anti-RASSF2 antibody IHC of human thymus. Immunohistochemistry of formalin-fixed, paraffin-embedded tissue after heat-induced antigen retrieval. Antibody LS-B3828 concentration 3.75 ug/ml.

Requested From:

Japan

Laboratory Reagent For In Vitro Research Use Only

Not for resale without prior written consent from LifeSpan BioSciences, Inc.

Created on 9/23/2014

© 2014 LifeSpan BioSciences