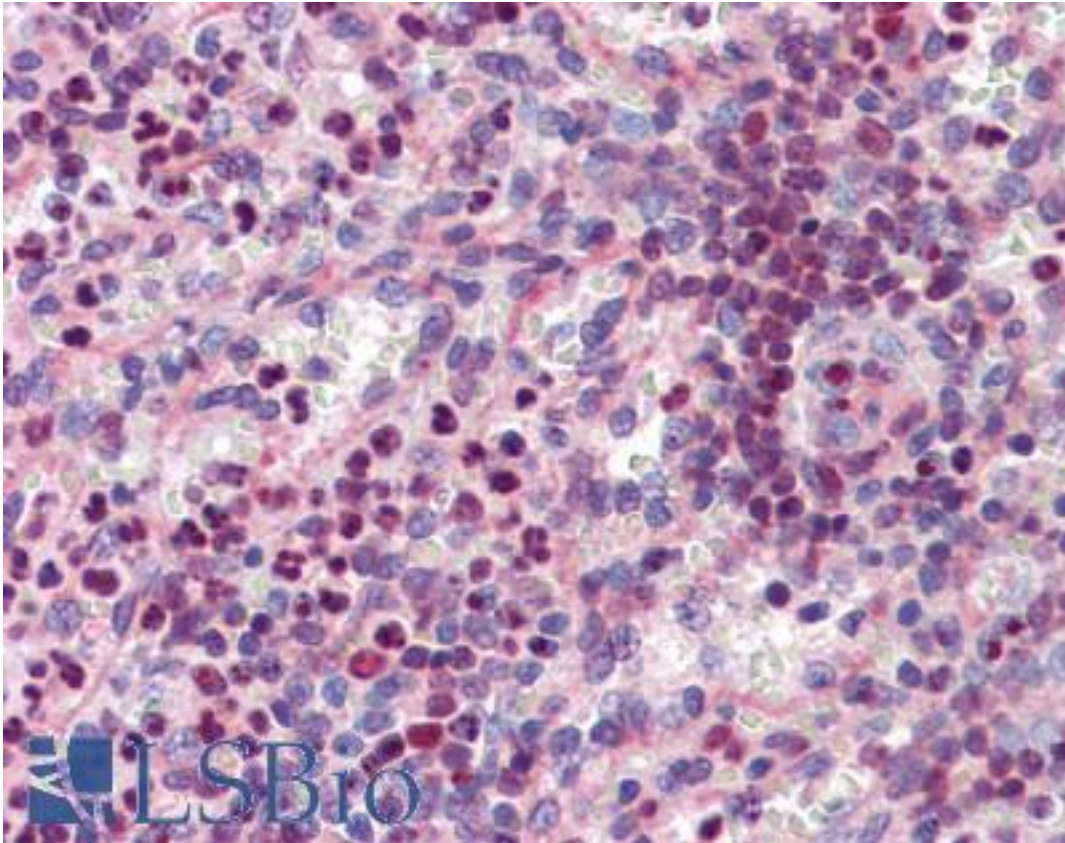


SPI1 / PU.1 Goat anti-Human Polyclonal Antibody - LS-B3822 - LSBio

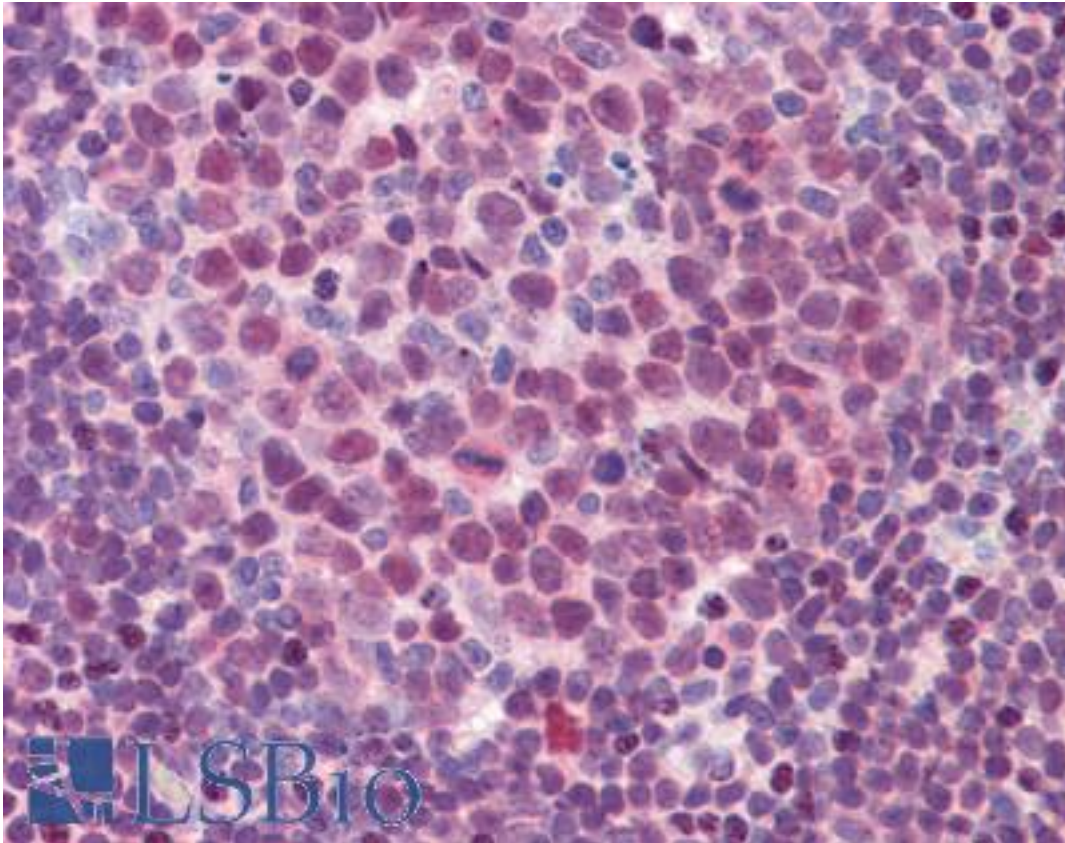
<b>CatalogID:</b>	LS-B3822
<b>Validation:</b>	This antibody replaces catalog number LS-C108209. It has been validated for use in the following assays: IHC-P.
<b>Target:</b>	spleen focus forming virus (SFFV) proviral integration oncogene (SPI1)
<b>Synonyms:</b>	SPI1 Antibody, 31 kDa-transforming protein Antibody, 31 kDa transforming protein Antibody, PU.1 Antibody, SFPI1 Antibody, SPI-1 Antibody, SPI-1 proto-oncogene Antibody, SPI-A Antibody, Transcription factor PU.1 Antibody
<b>Host</b>	SPI1 antibody was produced in Goat
<b>Clonality:</b>	Polyclonal
<b>Immunogen Species:</b>	SPI1 / PU.1 antibody was raised against Human
<b>Antigen Type:</b>	Synthetic peptide
<b>Immunogen:</b>	SPI1 / PU.1 antibody was raised against synthetic peptide C-DLYQRQTHEYY from an internal region of human SPI1 / PU.1 (NP_001074016.1; NP_003111.2). Percent identity by BLAST analysis: Human, Gorilla, Gibbon, Monkey, Panda, Bovine, Dog, Horse, Rabbit, Pig (100%); Marmoset, Opossum (91%); Rat, Platypus (82%).
<b>Specificity:</b>	Human SPI1 / PU.1. This antibody is expected to recognise both reported isoforms (NP_001074016.1; NP_003111.2).
<b>Reactivity:</b>	Human, Gorilla, Gibbon, Bovine, Dog, Horse, Pig, Rabbit
<b>Predicted Reactivity:</b>	Monkey
<b>Purification:</b>	Immunoaffinity purified
<b>Presentation:</b>	Tris-buffered saline, pH 7.3, 0.5% BSA, 0.02% sodium azide
<b>Recommended Storage:</b>	Store at -20°C. Minimize freezing and thawing.
<b>Usage Summary:</b>	Immunohistochemistry: LS-B3822 was validated for use in immunohistochemistry on a panel of 21 formalin-fixed, paraffin-embedded (FFPE) human tissues after heat induced antigen retrieval in pH 6.0 citrate buffer. After incubation with the primary antibody, slides were incubated with biotinylated secondary antibody, followed by alkaline phosphatase-streptavidin and chromogen. The stained slides were evaluated by a pathologist to confirm staining specificity. The optimal working concentration for LS-B3822 was determined to be 3.75ug/ml.
<b>Uses:</b>	IHC - Paraffin (3.75 µg/ml) (Optimal dilution to be determined by the researcher)
<b>Size:</b>	50 µg
<b>Concentration:</b>	0.5 mg/ml

**Immunohistochemistry Image:**



Anti-SPI1 / PU.1 antibody IHC of human spleen. Immunohistochemistry of formalin-fixed, paraffin-embedded tissue after heat-induced antigen retrieval. Antibody LS-B3822 concentration 3.75 ug/ml.

**Immunohistochemistry Image:**



Anti-SPI1 / PU.1 antibody IHC of human colon, lymphoid aggregate. Immunohistochemistry of formalin-fixed, paraffin-embedded tissue after heat-induced antigen retrieval. Antibody LS-B3822 concentration 3.75 ug/ml.

**Requested From:**

Japan

Laboratory Reagent For In Vitro Research Use Only

Not for resale without prior written consent from LifeSpan BioSciences, Inc.

Created on 9/23/2014

© 2014 LifeSpan BioSciences