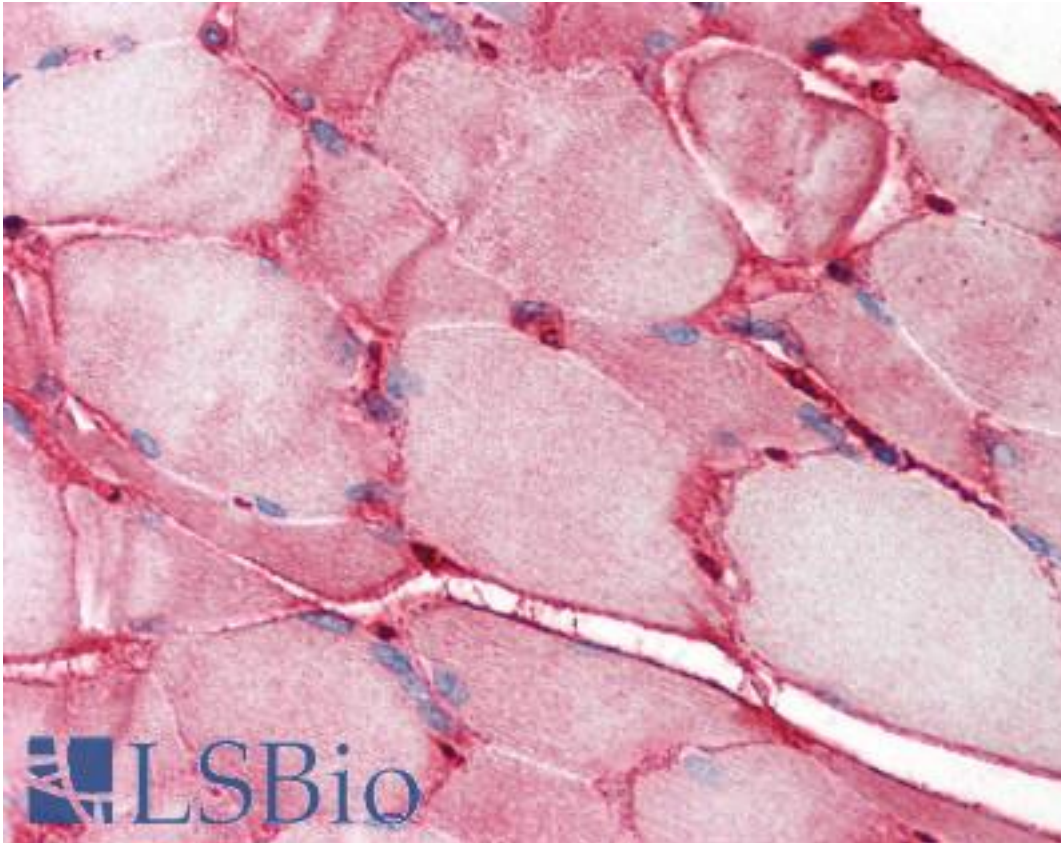


FN1 / Fibronectin Rabbit anti-Human Polyclonal Antibody - LS-B382 - LSBio	
CatalogID:	LS-B382
Validation:	This antibody replaces catalog number LS-C18962. It has been validated for use in the following assays: IHC.
Target:	fibronectin 1 (FN1)
Synonyms:	FN1 Antibody, CIG Antibody, Cold-insoluble globulin Antibody, Fibronectin 1 Antibody, FINC Antibody, LETS Antibody, GFND Antibody, ED-B Antibody, Fibronectin Antibody, FN Antibody, FNZ Antibody, GFND2 Antibody, Migration-stimulating factor Antibody, MSF Antibody
Host	FN1 antibody was produced in Rabbit
Clonality:	Polyclonal
Immunogen Species:	FN1 / Fibronectin antibody was raised against Human
Specificity:	Fibronectin was purified from Human plasma by binding to a denatured gelatin column followed by elution with high concentrations of arginine. The eluted material was further purified by gel filtration. Immunization occurred after single-band purity was assessed by SDS-PAGE.
Reactivity:	Human
Purification:	Immunoaffinity purified
Presentation:	0.02 M K phosphate, 0.15 M sodium chloride, pH 7.2, 0.01% sodium azide.
Recommended Storage:	Store vial at 4 C prior to opening. This product is stable at 4 C as an undiluted liquid. Dilute only prior to immediate use. For extended storage mix with an equal volume of glycerol, aliquot contents and freeze at -20 C or below.
Usage Summary:	Immunohistochemistry: LS-B382 was validated for use in immunohistochemistry on a panel of 21 formalin-fixed, paraffin-embedded (FFPE) human tissues after heat induced antigen retrieval in pH 6.0 citrate buffer. After incubation with the primary antibody, slides were incubated with biotinylated secondary antibody, followed by alkaline phosphatase-streptavidin and chromogen. The stained slides were evaluated by a pathologist to confirm staining specificity. The optimal working concentration for LS-B382 was determined to be 1.25 ug/ml.
Uses:	IHC - Paraffin (1.25 µg/ml), Western blot (1:5000 - 1:10000), Immunoprecipitation (1:100), ELISA (1:5000 - 1:10000) (Optimal dilution to be determined by the researcher)
Size:	50 µg

Immunohistochemistry Image:



Anti-FN1 / Fibronectin antibody IHC of human skeletal muscle. Immunohistochemistry of formalin-fixed, paraffin-embedded tissue after heat-induced antigen retrieval. Antibody LS-B382 concentration 25 ug/ml.

Requested From:

Japan

Laboratory Reagent For In Vitro Research Use Only

Not for resale without prior written consent from LifeSpan BioSciences, Inc.

Created on 9/23/2014

© 2014 LifeSpan BioSciences