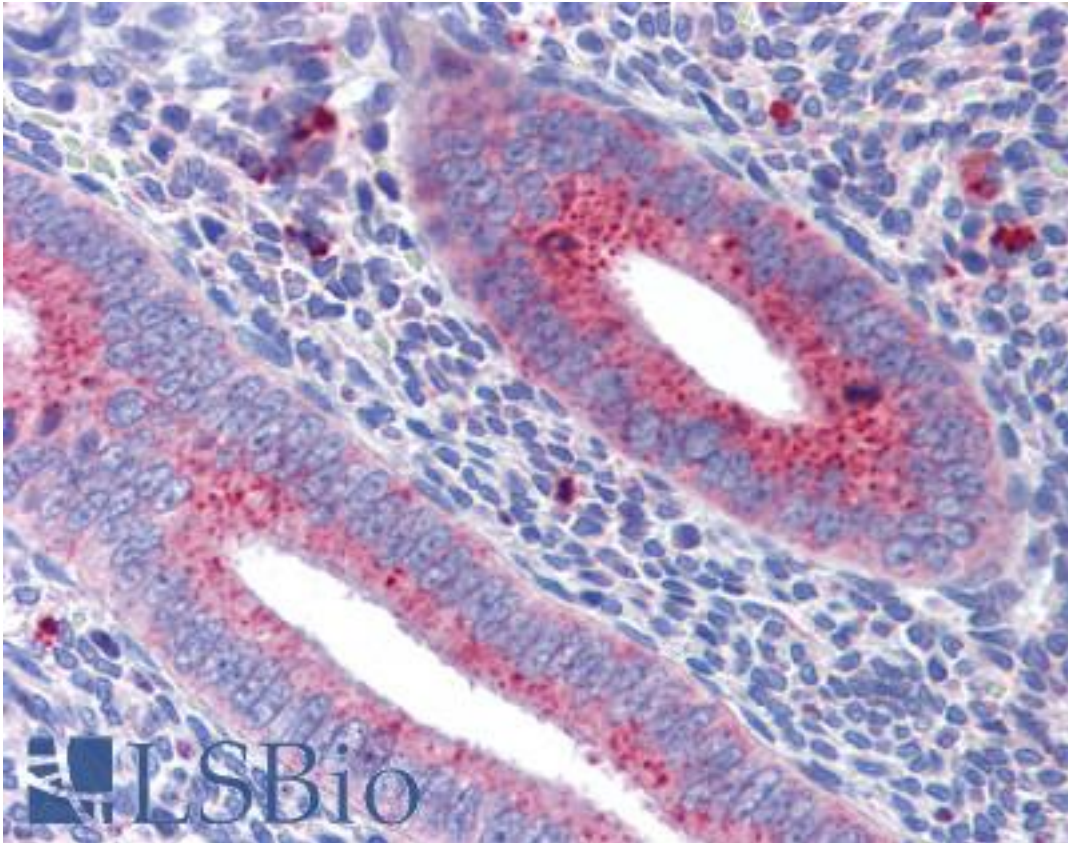


MFN1 Goat anti-Human Polyclonal Antibody - LS-B3816 - LSBio

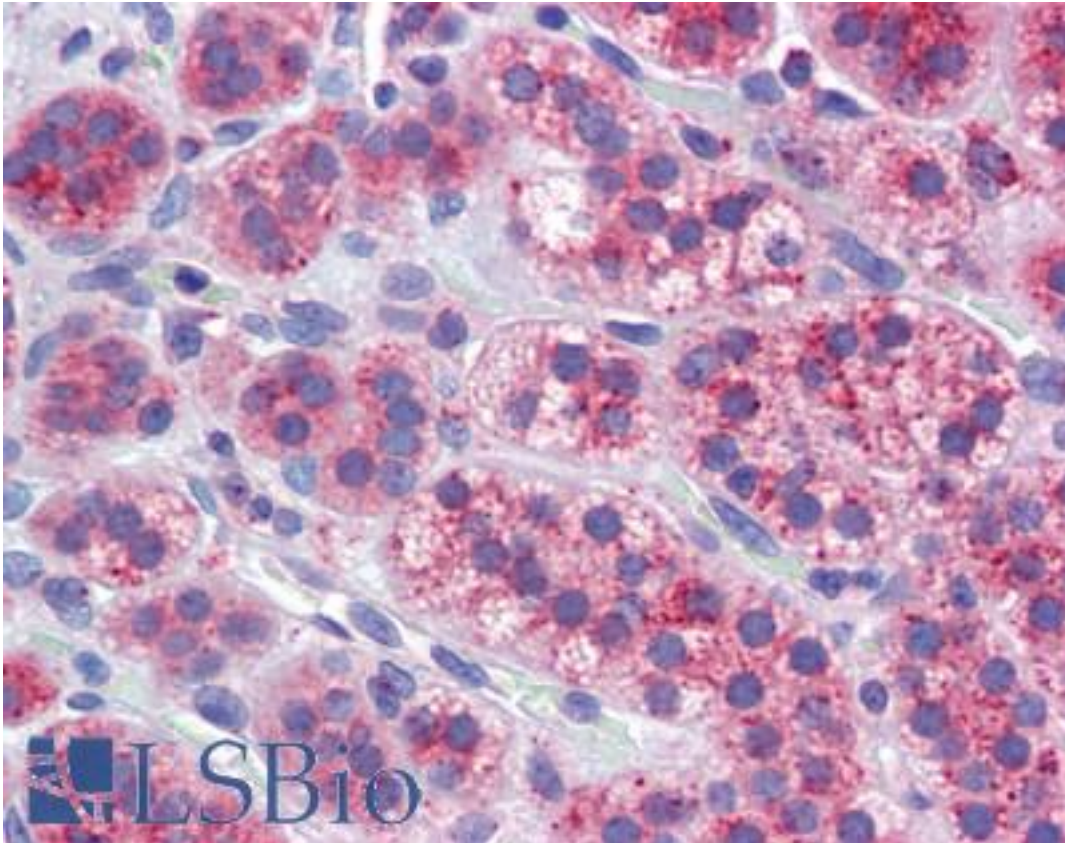
CatalogID:	LS-B3816
Validation:	This antibody replaces catalog number LS-C108175. It has been validated for use in the following assays: IHC-P.
Target:	mitofusin 1 (MFN1)
Synonyms:	MFN1 Antibody, Fzo homolog Antibody, Hfzo2 Antibody, Mitofusin-1 Antibody, Hfzo1 Antibody, Mitofusin 1 Antibody, Putative transmembrane GTPase Antibody, Transmembrane GTPase MFN1 Antibody
Host	MFN1 antibody was produced in Goat
Clonality:	Polyclonal
Immunogen Species:	MFN1 antibody was raised against Human
Antigen Type:	Synthetic peptide
Immunogen:	MFN1 antibody was raised against synthetic peptide C-NKAVQLENELEN from an internal region of human MFN1 (NP_284941.2). Percent identity by BLAST analysis: Human, Gibbon, Monkey, Marmoset, Elephant, Dog, Horse, Rabbit (100%); Gorilla, Mouse, Rat, Bovine (92%); Bat, Platypus (83%).
Specificity:	Human MFN1.
Reactivity:	Human, Gibbon, Monkey, Dog, Horse, Rabbit
Predicted Reactivity:	Gorilla, Mouse, Rat, Bovine
Purification:	Immunoaffinity purified
Presentation:	Tris-buffered saline, pH 7.3, 0.5% BSA, 0.02% sodium azide
Recommended Storage:	Store at -20°C. Minimize freezing and thawing.
Usage Summary:	Immunohistochemistry: LS-B3816 was validated for use in immunohistochemistry on a panel of 21 formalin-fixed, paraffin-embedded (FFPE) human tissues after heat induced antigen retrieval in pH 6.0 citrate buffer. After incubation with the primary antibody, slides were incubated with biotinylated secondary antibody, followed by alkaline phosphatase-streptavidin and chromogen. The stained slides were evaluated by a pathologist to confirm staining specificity. The optimal working concentration for LS-B3816 was determined to be 3.75ug/ml.
Uses:	IHC - Paraffin (3.75 µg/ml) (Optimal dilution to be determined by the researcher)
Size:	50 µg
Concentration:	0.5 mg/ml

Immunohistochemistry Image:



Anti-MFN1 antibody IHC of human uterus. Immunohistochemistry of formalin-fixed, paraffin-embedded tissue after heat-induced antigen retrieval. Antibody LS-B3816 concentration 3.75 ug/ml.

Immunohistochemistry Image:



Anti-MFN1 antibody IHC of human adrenal. Immunohistochemistry of formalin-fixed, paraffin-embedded tissue after heat-induced antigen retrieval. Antibody LS-B3816 concentration 3.75 ug/ml.

Requested From:

Japan

Laboratory Reagent For In Vitro Research Use Only

Not for resale without prior written consent from LifeSpan BioSciences, Inc.

Created on 9/23/2014

© 2014 LifeSpan BioSciences