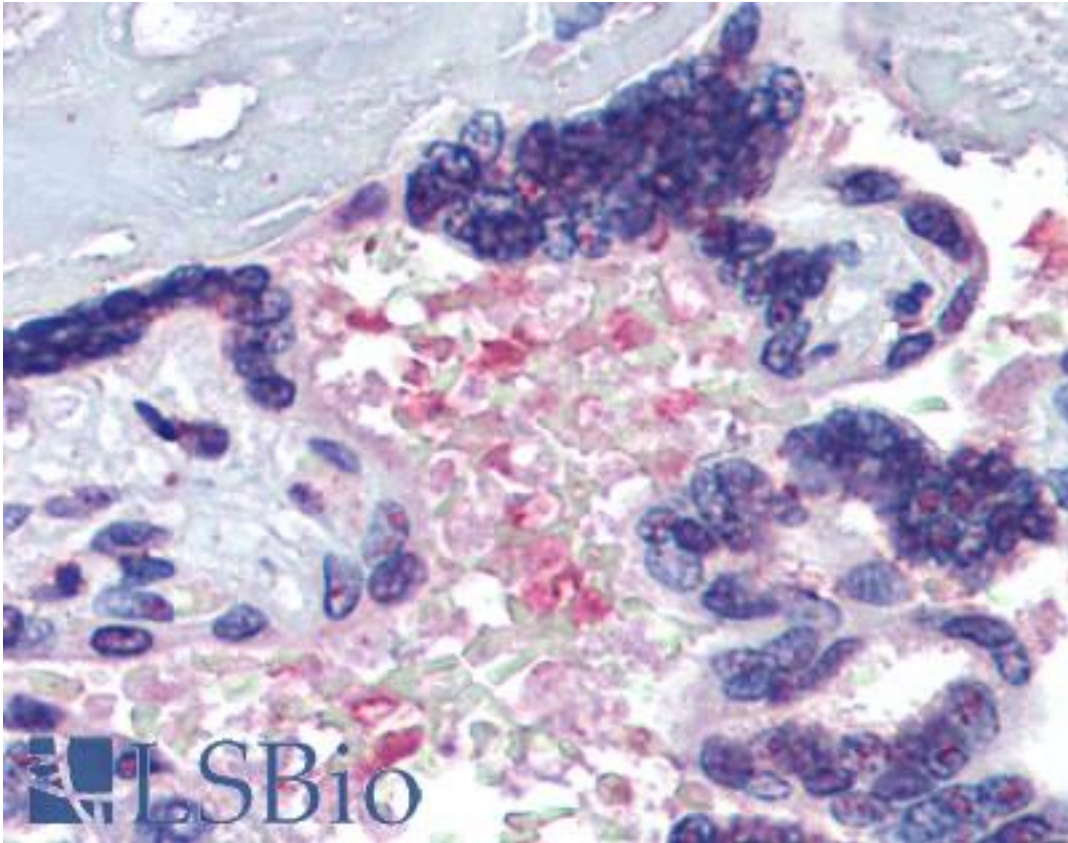


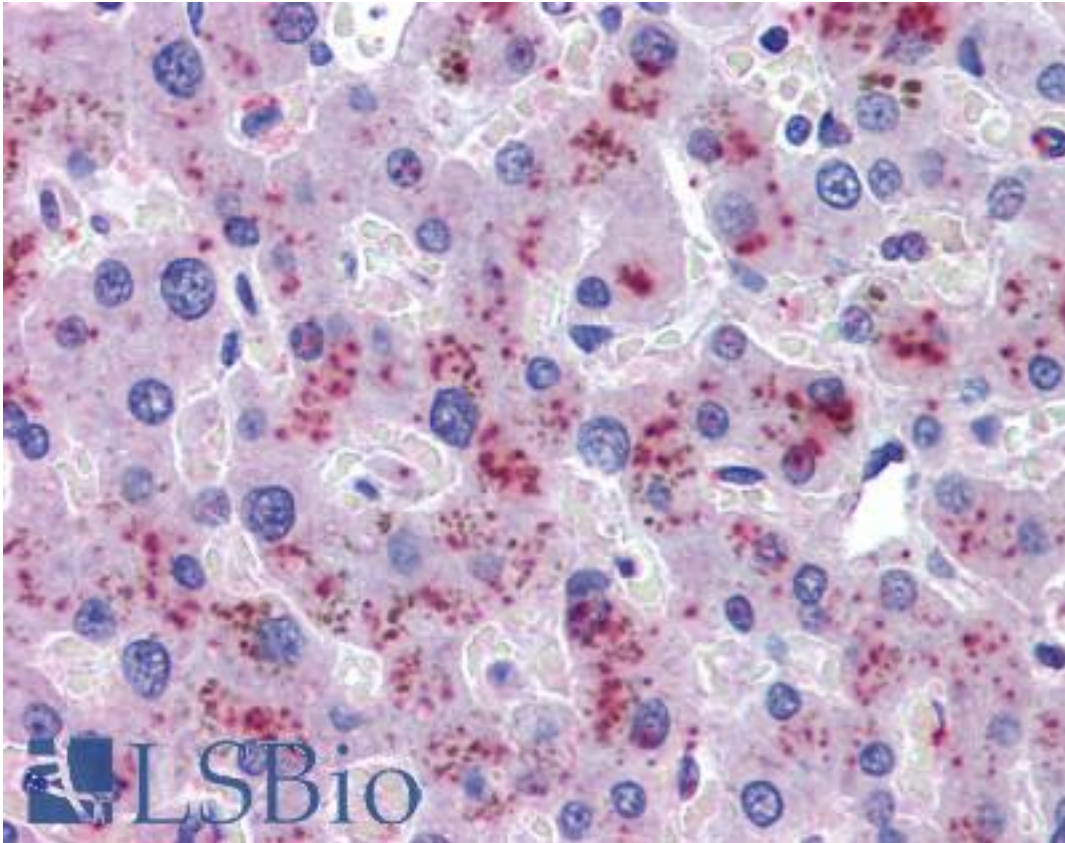
HPX / Hemopexin Goat anti-Human Polyclonal Antibody - LS-B3811 - LSBio	
<b>CatalogID:</b>	LS-B3811
<b>Validation:</b>	This antibody replaces catalog number LS-C108163. It has been validated for use in the following assays: IHC-P.
<b>Target:</b>	hemopexin (HPX)
<b>Synonyms:</b>	HPX Antibody, Hemopexin Antibody, HX Antibody, Beta-1B-glycoprotein Antibody
<b>Host</b>	HPX antibody was produced in Goat
<b>Clonality:</b>	Polyclonal
<b>Immunogen Species:</b>	HPX / Hemopexin antibody was raised against Human
<b>Antigen Type:</b>	Synthetic peptide
<b>Immunogen:</b>	HPX / Hemopexin antibody was raised against synthetic peptide C-HGNVAEGETKPDPD from an internal region of human HPX / Hemopexin (NP_000604.1). Percent identity by BLAST analysis: Human, Gorilla, Orangutan, Monkey (100%); Marmoset (86%).
<b>Specificity:</b>	Human HPX / Hemopexin.
<b>Reactivity:</b>	Human, Gorilla, Orangutan, Monkey
<b>Purification:</b>	Immunoaffinity purified
<b>Presentation:</b>	Tris-buffered saline, pH 7.3, 0.5% BSA, 0.02% sodium azide
<b>Recommended Storage:</b>	Store at -20°C. Minimize freezing and thawing.
<b>Usage Summary:</b>	Immunohistochemistry: LS-B3811 was validated for use in immunohistochemistry on a panel of 21 formalin-fixed, paraffin-embedded (FFPE) human tissues after heat induced antigen retrieval in pH 6.0 citrate buffer. After incubation with the primary antibody, slides were incubated with biotinylated secondary antibody, followed by alkaline phosphatase-streptavidin and chromogen. The stained slides were evaluated by a pathologist to confirm staining specificity. The optimal working concentration for LS-B3811 was determined to be 3.75ug/ml.
<b>Uses:</b>	IHC - Paraffin (3.75 µg/ml) (Optimal dilution to be determined by the researcher)
<b>Size:</b>	50 µg
<b>Concentration:</b>	0.5 mg/ml

**Immunohistochemistry Image:**



Anti-Hemopexin antibody IHC of human placenta, serum. Immunohistochemistry of formalin-fixed, paraffin-embedded tissue after heat-induced antigen retrieval. Antibody LS-B3811 concentration 3.75 ug/ml.

**Immunohistochemistry Image:**



Anti-Hemopexin antibody IHC of human liver. Immunohistochemistry of formalin-fixed, paraffin-embedded tissue after heat-induced antigen retrieval. Antibody LS-B3811 concentration 3.75 ug/ml.

**Requested From:**

Japan

Laboratory Reagent For In Vitro Research Use Only

Not for resale without prior written consent from LifeSpan BioSciences, Inc.

Created on 9/23/2014

© 2014 LifeSpan BioSciences