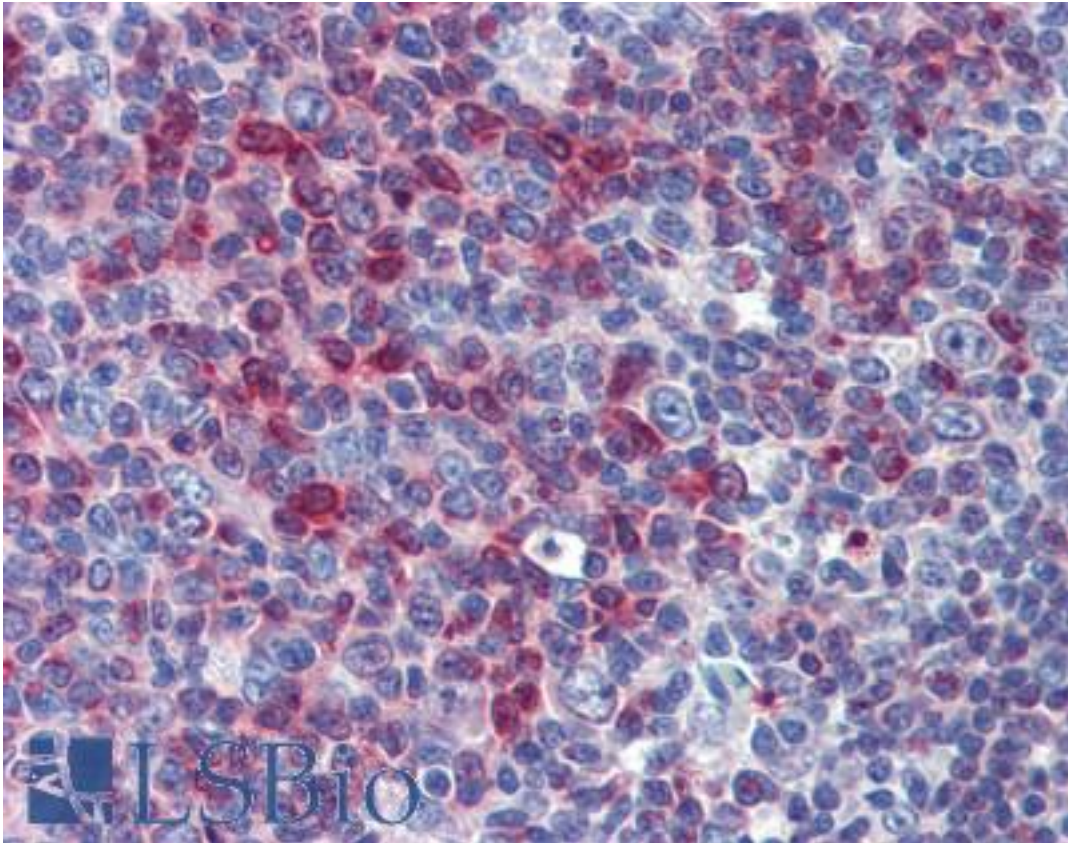


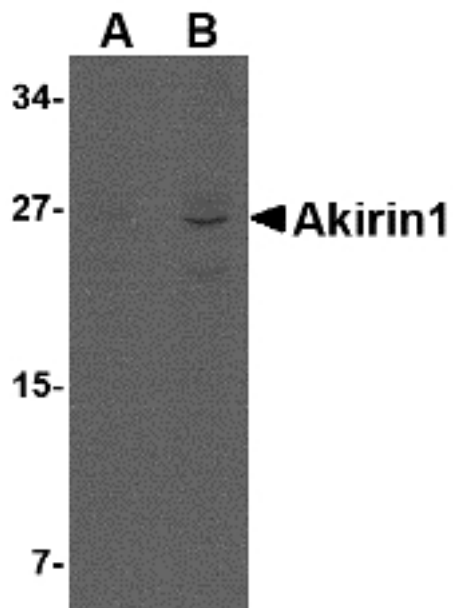
AKIRIN1 Rabbit anti-Human Polyclonal (Internal) Antibody - LS-B3810 - LSBio	
<b>CatalogID:</b>	LS-B3810
<b>Validation:</b>	This antibody replaces catalog number LS-C83924. It has been validated for use in the following assays: IHC-P.
<b>Target:</b>	akirin 1 (AKIRIN1)
<b>Synonyms:</b>	AKIRIN1 Antibody, Akirin 1 Antibody, Akirin-1 Antibody, RP11-781D11.2 Antibody, STRF2 Antibody, C1orf108 Antibody
<b>Host</b>	AKIRIN1 antibody was produced in Rabbit
<b>Clonality:</b>	Polyclonal
<b>Immunogen Species:</b>	AKIRIN1 antibody was raised against Human
<b>Antigen Type:</b>	Synthetic peptide
<b>Immunogen:</b>	AKIRIN1 antibody was raised against a 14 amino acid peptide near the center of human Akirin1.
<b>Epitope:</b>	Internal
<b>Reactivity:</b>	Human, Mouse, Rat
<b>Purification:</b>	Immunoaffinity purified
<b>Presentation:</b>	PBS, 0.02% sodium azide
<b>Recommended Storage:</b>	Short term 4°C, long term aliquot and store at -20°C, avoid freeze thaw cycles. Store undiluted.
<b>Usage Summary:</b>	Akirin1 antibody can be used for detection of Akirin1 by Western blot at 1-2 ug/ml
<b>Uses:</b>	IHC - Paraffin (5 µg/ml), Western blot (1 - 2 µg/ml) (Optimal dilution to be determined by the researcher)
<b>Size:</b>	50 µg
<b>Concentration:</b>	1 mg/ml

**Immunohistochemistry Image:**



Anti-AKIRIN1 antibody IHC of human tonsil. Immunohistochemistry of formalin-fixed, paraffin-embedded tissue after heat-induced antigen retrieval. Antibody LS-B3810 concentration 5 ug/ml.

**Western Blot Image:**



Western blot of Akirin1 in rat liver lysate with Akirin1 antibody at (A) 1 and (B) 2 ug/ml.

<b>Requested From:</b>	Japan
Laboratory Reagent For In Vitro Research Use Only	
Not for resale without prior written consent from LifeSpan BioSciences, Inc.	
Created on 9/23/2014	
© 2014 LifeSpan BioSciences	