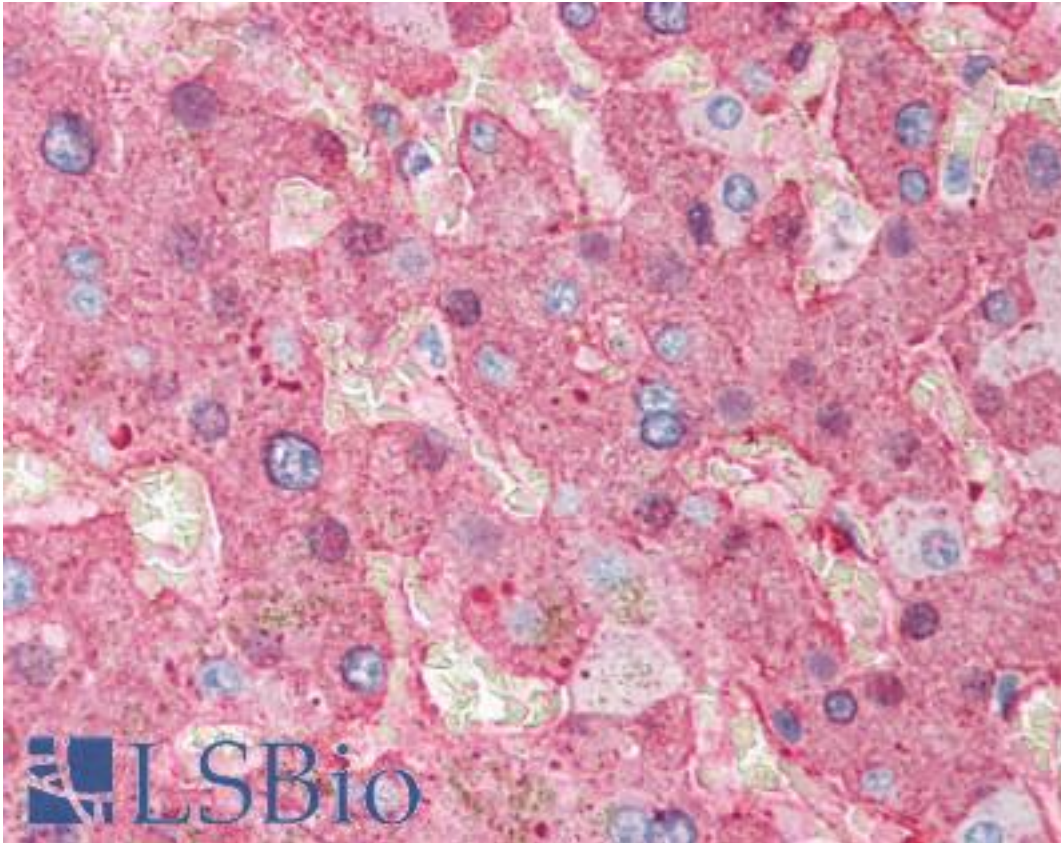


Fibrinogen Goat anti-Human Polyclonal Antibody - LS-B381 - LSBio	
<b>CatalogID:</b>	LS-B381
<b>Validation:</b>	This antibody replaces catalog number LS-C18802. It has been validated for use in the following assays: IHC.
<b>Target:</b>	Fibrinogen
<b>Host</b>	Fibrinogen antibody was produced in Goat
<b>Clonality:</b>	Polyclonal
<b>Immunogen Species:</b>	Fibrinogen antibody was raised against Human
<b>Immunogen:</b>	Fibrinogen antibody was raised against purified fibrinogen from human plasma.
<b>Specificity:</b>	Fibrinogen [Human Plasma].
<b>Reactivity:</b>	Human
<b>Purification:</b>	Delipidated and defibrinated
<b>Presentation:</b>	0.02 M Potassium Phosphate, 0.15 M Sodium Chloride, pH 7.2 with 0.01% (w/v) Sodium Azide
<b>Recommended Storage:</b>	+4°C or -20°C, Avoid repeated freezing and thawing.
<b>Usage Summary:</b>	Immunohistochemistry: LS-B381 was validated for use in immunohistochemistry on a panel of 21 formalin-fixed, paraffin-embedded (FFPE) human tissues after heat induced antigen retrieval in pH 6.0 citrate buffer. After incubation with the primary antibody, slides were incubated with biotinylated secondary antibody, followed by alkaline phosphatase-streptavidin and chromogen. The stained slides were evaluated by a pathologist to confirm staining specificity. The optimal working concentration for LS-B381 was determined to be 1:500.
<b>Uses:</b>	IHC - Paraffin (1:500), Immunofluorescence, Western blot, Immunoprecipitation, ELISA (Optimal dilution to be determined by the researcher)
<b>Size:</b>	50 µl
<b>Concentration:</b>	90 mg/ml

**Immunohistochemistry Image:**



Anti-Fibrinogen antibody IHC of human liver. Immunohistochemistry of formalin-fixed, paraffin-embedded tissue after heat-induced antigen retrieval. Antibody LS-B381 dilution 1:500.

**Requested From:**

Japan

Laboratory Reagent For In Vitro Research Use Only

Not for resale without prior written consent from LifeSpan BioSciences, Inc.

Created on 9/23/2014

© 2014 LifeSpan BioSciences