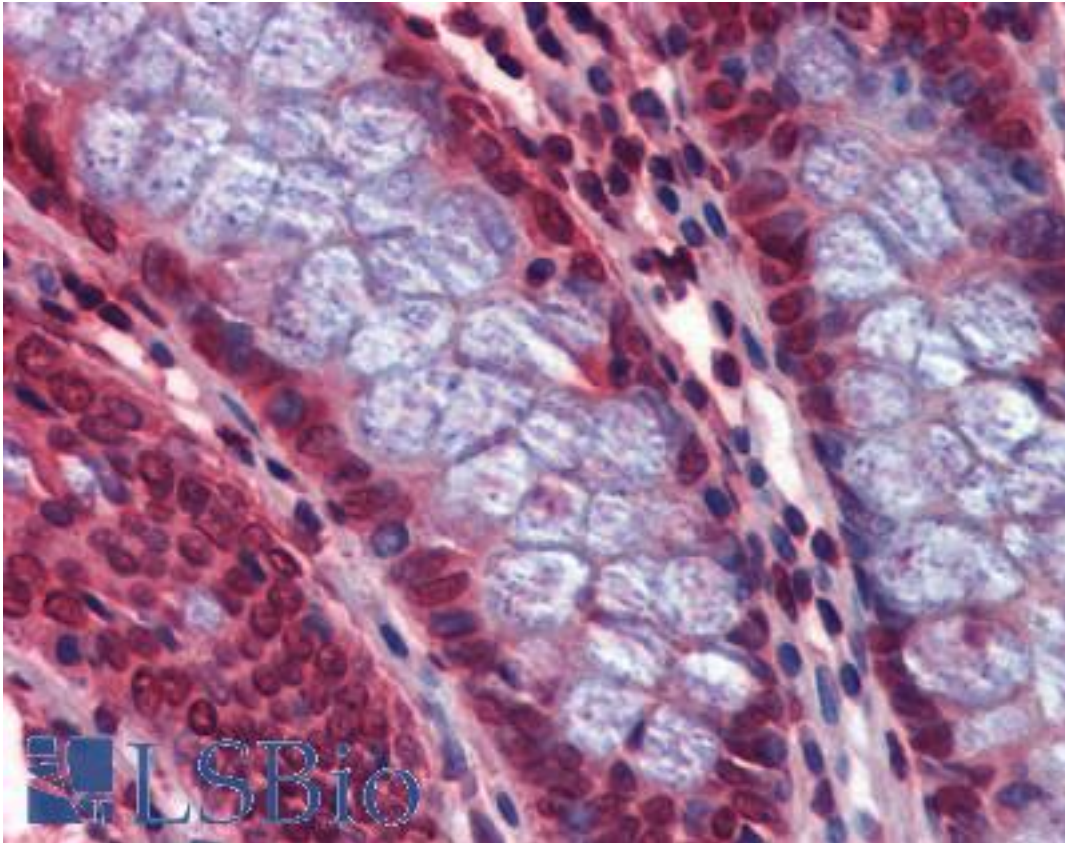


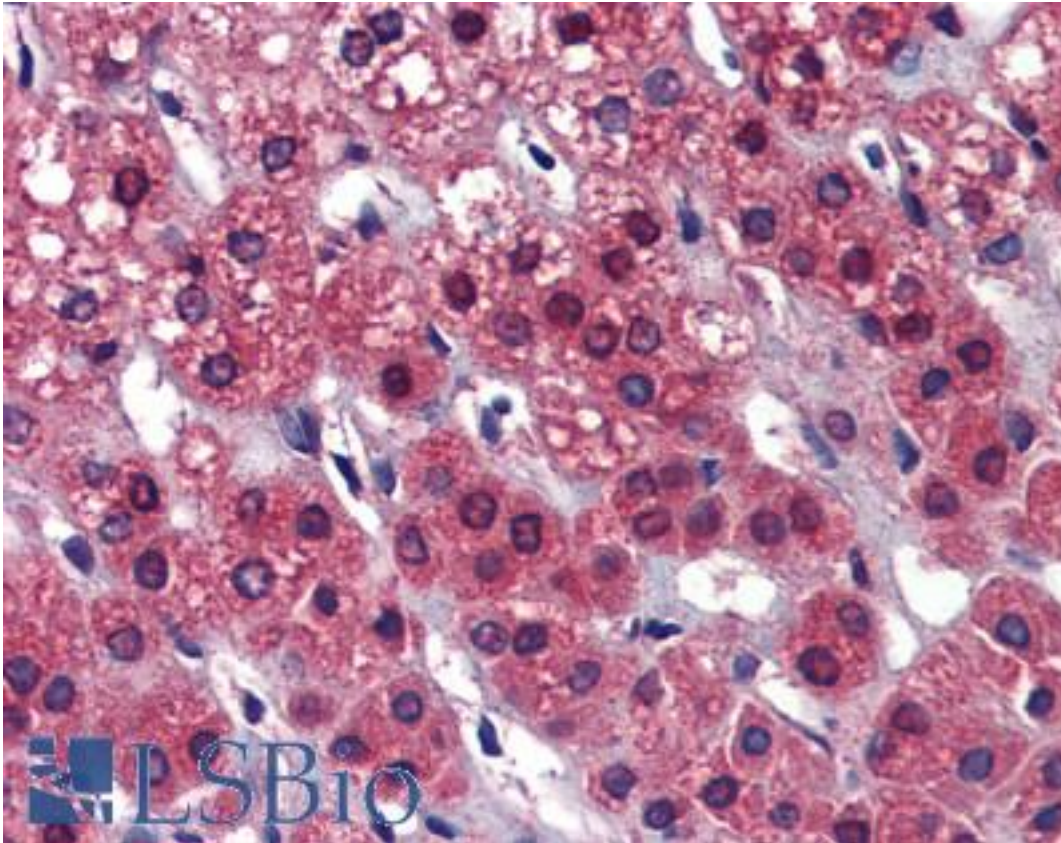
CAPS2 Rabbit anti-Human Polyclonal (Internal) Antibody - LS-B3803 - LSBio	
CatalogID:	LS-B3803
Validation:	This antibody replaces catalog number LS-C53289. It has been validated for use in the following assays: IHC-P.
Target:	calcyphosine 2 (CAPS2)
Synonyms:	CAPS2 Antibody, Calcyphosine 2 Antibody, Calcyphosin-2 Antibody, Calcyphosphine 2 Antibody, UG0636c06 Antibody, Calcyphosine-2 Antibody
Host	CAPS2 antibody was produced in Rabbit
Clonality:	Polyclonal
Immunogen Species:	CAPS2 antibody was raised against Human
Immunogen:	CAPS2 antibody was raised against 19 amino acid peptide near the center of the human CAPS2.
Epitope:	Internal
Reactivity:	Human, Mouse, Rat
Purification:	Immunoaffinity purified
Presentation:	PBS, 0.02% sodium azide.
Recommended Storage:	Short term 4°C, long term aliquot and store at -20°C, avoid freeze thaw cycles. Store undiluted.
Uses:	IHC - Paraffin (5 µg/ml), Western blot (0.5 - 1 µg/ml) (Optimal dilution to be determined by the researcher)
Size:	50 µg
Concentration:	1 mg/ml

Immunohistochemistry Image:



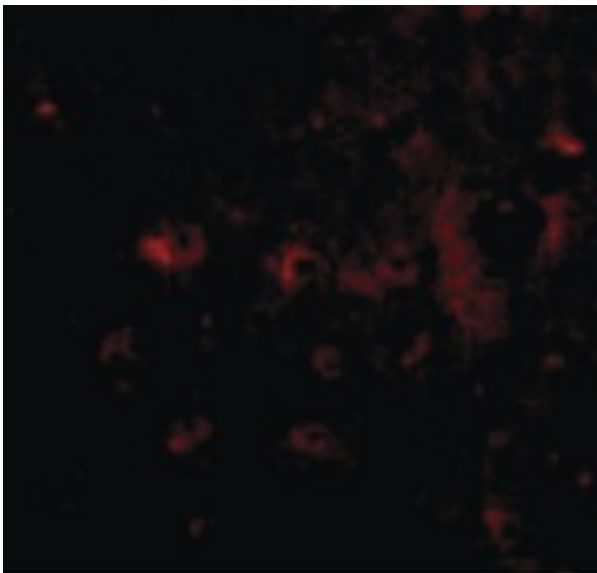
Anti-CAPS2 antibody IHC of human colon. Immunohistochemistry of formalin-fixed, paraffin-embedded tissue after heat-induced antigen retrieval. Antibody LS-B3803 concentration 5 ug/ml.

Immunohistochemistry Image:



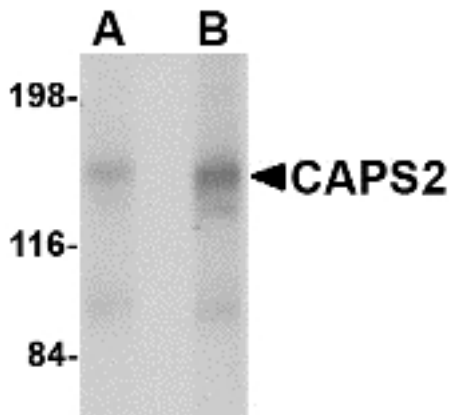
Anti-CAPS2 antibody IHC of human adrenal. Immunohistochemistry of formalin-fixed, paraffin-embedded tissue after heat-induced antigen retrieval. Antibody LS-B3803 concentration 5 ug/ml.

Immunofluorescence Image:



Immunofluorescence of CAPS2 in Human Brain cells with CAPS2 antibody at 20 ug/ml.

Western Blot Image:



Western blot of CAPS2 in human brain tissue lysate with CAPS2 antibody at (A) 0.5 and (B) 1 ug/ml.

Requested From:

Japan

Laboratory Reagent For In Vitro Research Use Only

Not for resale without prior written consent from LifeSpan BioSciences, Inc.

Created on 9/23/2014

© 2014 LifeSpan BioSciences