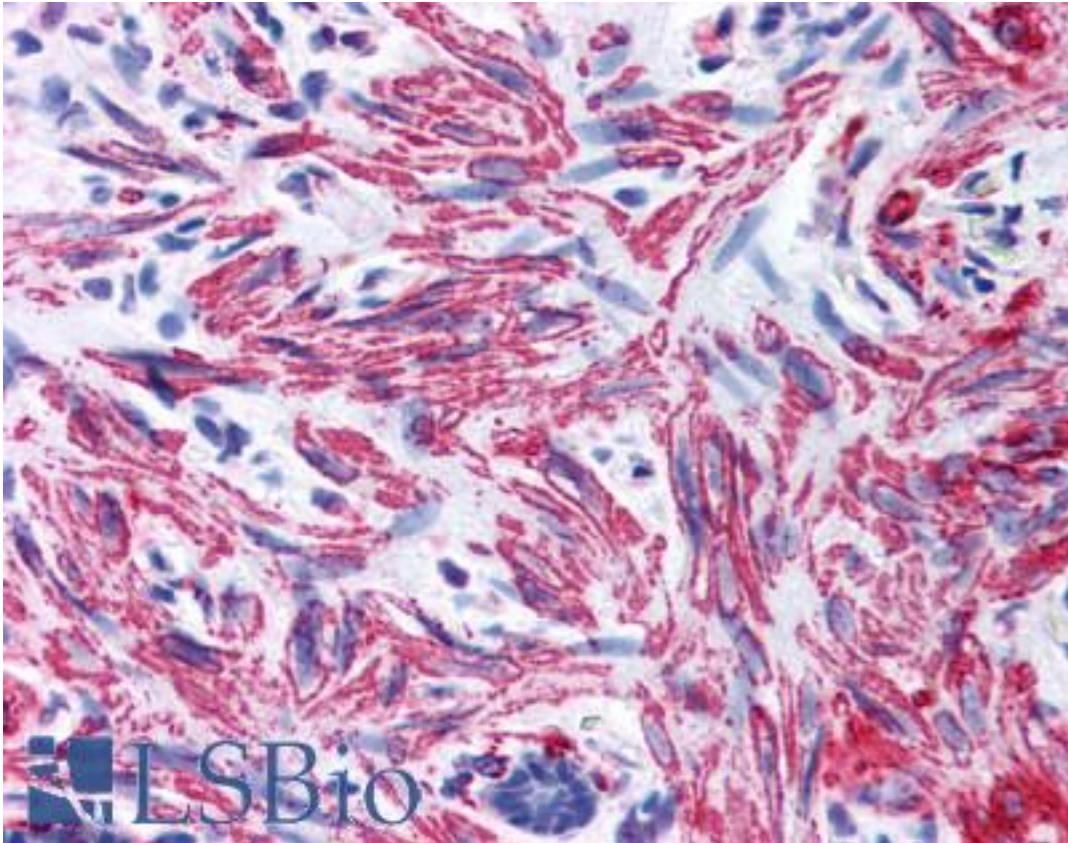


MLC2 / MYL9 Rabbit anti-Human Polyclonal (aa12-27) Antibody - LS-B38 - LSBio

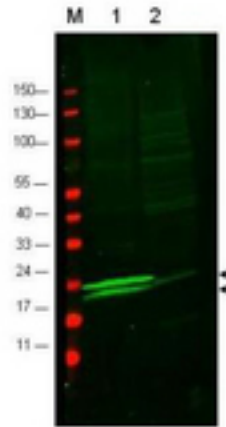
CatalogID:	LS-B38
Validation:	This antibody replaces catalog number LS-C18825. It has been validated for use in the following assays: IHC.
Target:	myosin, light chain 9, regulatory (MYL9)
Synonyms:	MYL9 Antibody, 20 kDa myosin light chain Antibody, LC20 Antibody, MLC-2C Antibody, MLC2 Antibody, Myosin RLC Antibody, MRLC1 Antibody, MYRL2 Antibody
Family / Subfamily:	Protein Kinase Non Catalytic / not assigned-Protein Kinase Non Catalytic
Host	MYL9 antibody was produced in Rabbit
Clonality:	Polyclonal
Immunogen Species:	MLC2 / MYL9 antibody was raised against Human
Antigen Type:	Synthetic peptide
Immunogen:	MLC2 / MYL9 antibody was raised against synthetic peptide from human MYL9.
Specificity:	Amino acids 12-27 of human myosin light chain protein.
Epitope:	aa12-27
Reactivity:	Human, Mouse, Rat
Purification:	Immunoaffinity purified
Presentation:	0.02 M potassium phosphate, 0.15 M sodium chloride, pH 7.2, 0.01% sodium azide.
Recommended Storage:	Long term: -20°C; Short term: +4°C. Avoid repeat freeze-thaw cycles.
Usage Summary:	Immunohistochemistry: LS-B38 was validated for use in immunohistochemistry on a panel of 21 formalin-fixed, paraffin-embedded (FFPE) human tissues after heat induced antigen retrieval in pH 6.0 citrate buffer. After incubation with the primary antibody, slides were incubated with biotinylated secondary antibody, followed by alkaline phosphatase-streptavidin and chromogen. The stained slides were evaluated by a pathologist to confirm staining specificity. The optimal working concentration for LS-B38 was determined to be 2.5 ug/ml.
Uses:	IHC - Paraffin (2.5 µg/ml), Western blot (1:500 - 1:2000), Immunoprecipitation, ELISA (1:5000 - 1:20000) (Optimal dilution to be determined by the researcher)
Size:	50 µg
Concentration:	0.71 mg/ml

Immunohistochemistry Image:



Anti-MYL9 antibody IHC of human smooth muscle. Immunohistochemistry of formalin-fixed, paraffin-embedded tissue after heat-induced antigen retrieval. Antibody LS-B38 concentration 2.5 ug/ml.

Western Blot Image:



Anti-Myosin Antibody - Western Blot. Western blot of anti-RLC of Smooth and Non-muscle Myosin antibody to detect vascular myosin (rat aorta, lane 1) but not cardiac myosin (mouse heart, lane2). Each lane was loaded with 35 ug of lysate. Arrowheads indicate the detection of both mono-phosphorylated (upper) and unphosphorylated (lower) forms of the protein. After blocking with 5% NGS and 0.5% BLOTTO in PBS, the membrane was probed with the primary antibody diluted in blocking buffer to 1:600 for 2 h at room temperature. The membrane was washed and reacted with a 1:10000 dilution of IRDye800 conjugated Gt-a-Rabbit IgG [H&L] MX (for 45 min at room temperature (800 nm channel, green). Molecular weight estimation was made by comparison to prestained MW markers in lane M (700 nm channel, red). IRDye800 fluorescence image was captured using the Odyssey Infrared Imaging System developed by LI-COR. IRDye is a trademark of LI-COR, Inc. Other detection systems will yield similar results.

Requested From:

Japan

Laboratory Reagent For In Vitro Research Use Only

Not for resale without prior written consent from LifeSpan BioSciences, Inc.

Created on 9/23/2014

© 2014 LifeSpan BioSciences