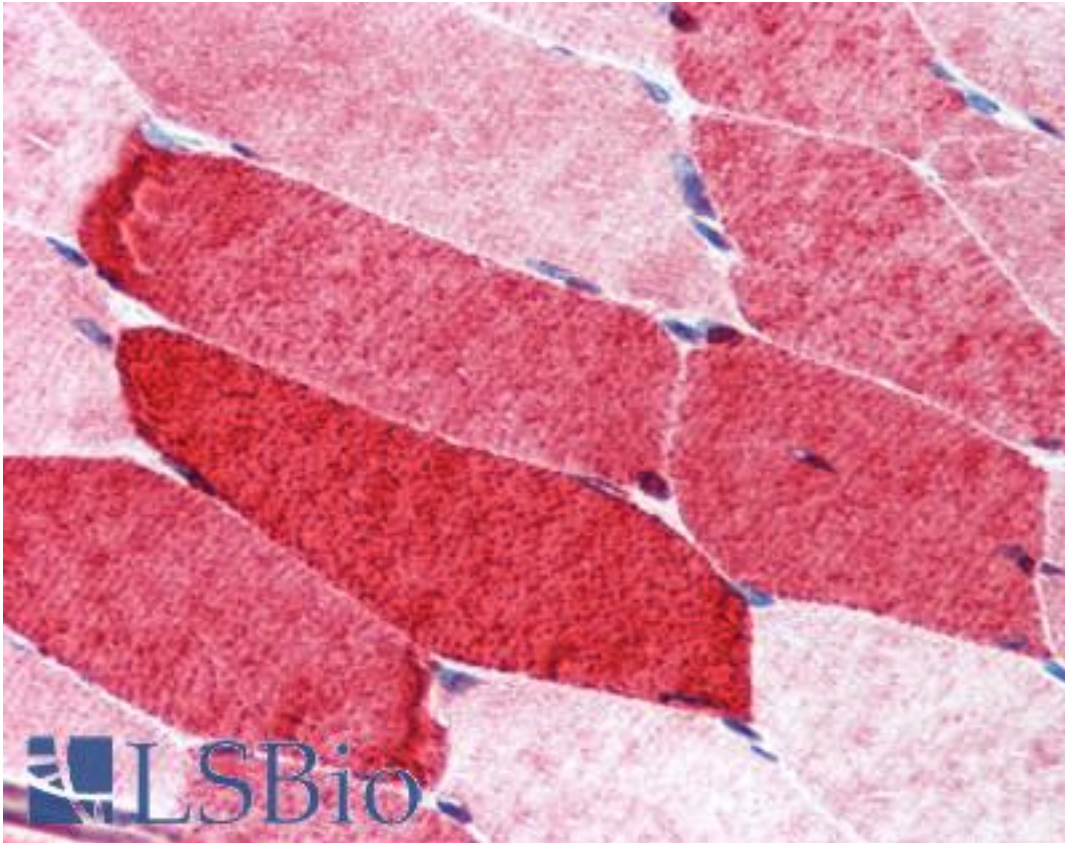


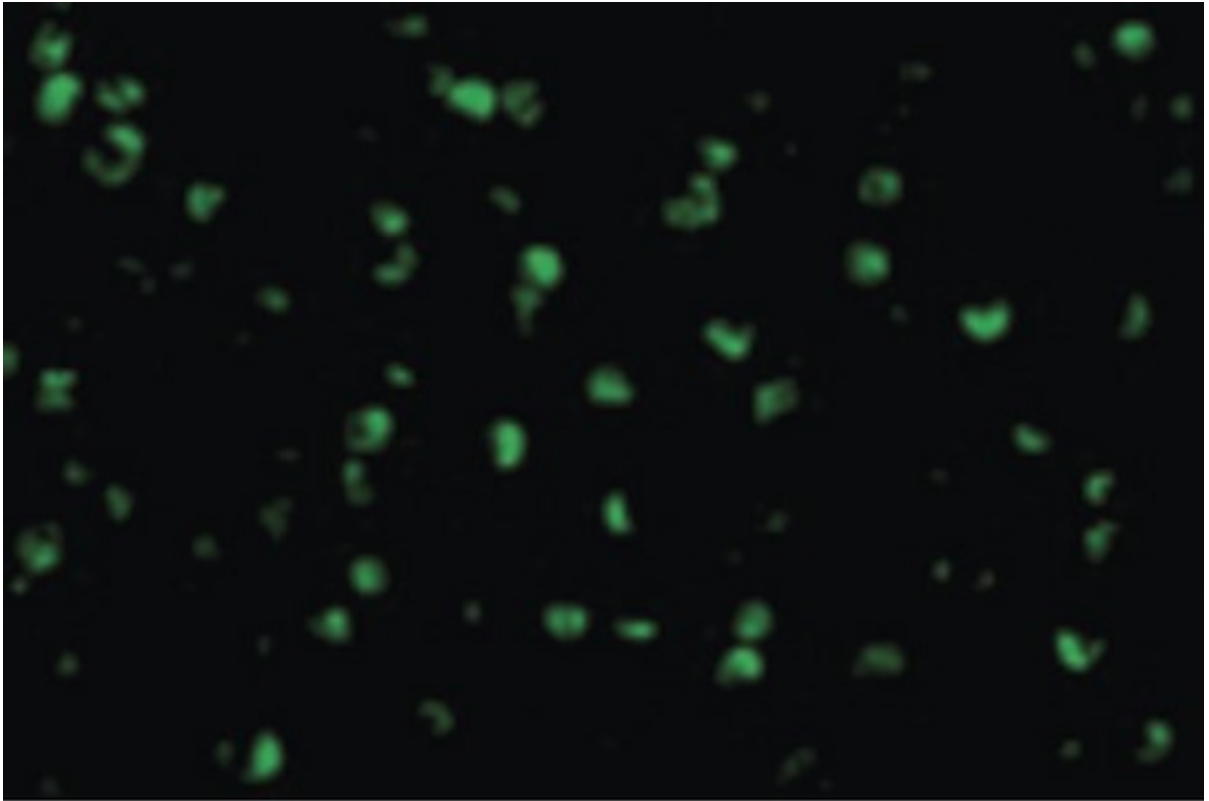
Raptor / Mip1 Rabbit anti-Human Polyclonal (N-Terminus) Antibody - LS-B3798 - LSBio	
CatalogID:	LS-B3798
Validation:	This antibody replaces catalog number LS-C19501. It has been validated for use in the following assays: IHC-P.
Target:	regulatory associated protein of MTOR, complex 1 (RPTOR)
Synonyms:	RPTOR Antibody, KOG1 Antibody, KIAA1303 Antibody, RAPTOR Antibody, Mip1 Antibody
Host	RPTOR antibody was produced in Rabbit
Clonality:	Polyclonal
Immunogen Species:	Raptor / Mip1 antibody was raised against Human
Antigen Type:	Synthetic peptide
Immunogen:	Raptor / Mip1 antibody was raised against synthetic peptide from human RPTOR / Raptor.
Specificity:	13 amino acid peptide from near the amino-terminus of human Raptor
Epitope:	N-Terminus
Reactivity:	Human, Mouse
Purification:	Immunoaffinity purified
Presentation:	PBS, 0.02% sodium azide.
Recommended Storage:	Short term 4°C, long term aliquot and store at -20°C, avoid freeze thaw cycles. Store undiluted.
Uses:	IHC - Paraffin (5 µg/ml), ICC, Western blot (2 µg/ml) (Optimal dilution to be determined by the researcher)
Size:	50 µg
Concentration:	1 mg/ml

Immunohistochemistry Image:



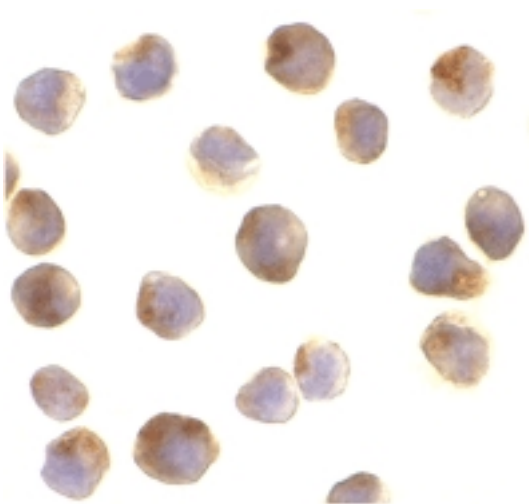
Anti-RPTOR / Raptor antibody IHC of human skeletal muscle. Immunohistochemistry of formalin-fixed, paraffin-embedded tissue after heat-induced antigen retrieval. Antibody LS-B3798 concentration 5 ug/ml.

Immunofluorescence Image:



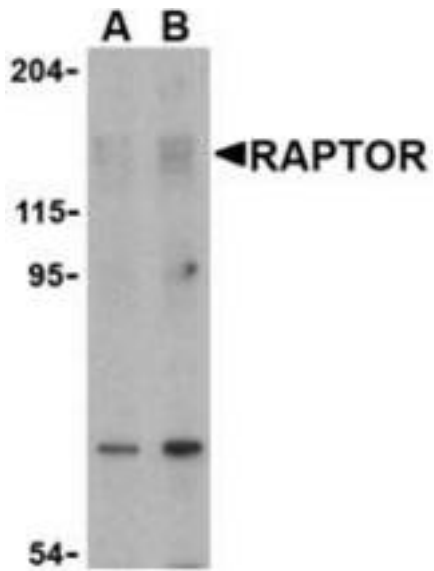
Immunofluorescence of Raptor in L1210 cells with Raptor antibody at 10 ug/ml.

Immunocytochemistry Image:



Immunocytochemistry in L1210 cells with Raptor antibody at 10 μ g/ml.

Western Blot Image:



Western blot of Raptor in L1210 cell lysate with Raptor antibody at (A) 2 and (B) 4 ug/ml.

Requested From:

Japan

Laboratory Reagent For In Vitro Research Use Only

Not for resale without prior written consent from LifeSpan BioSciences, Inc.

Created on 9/23/2014

© 2014 LifeSpan BioSciences