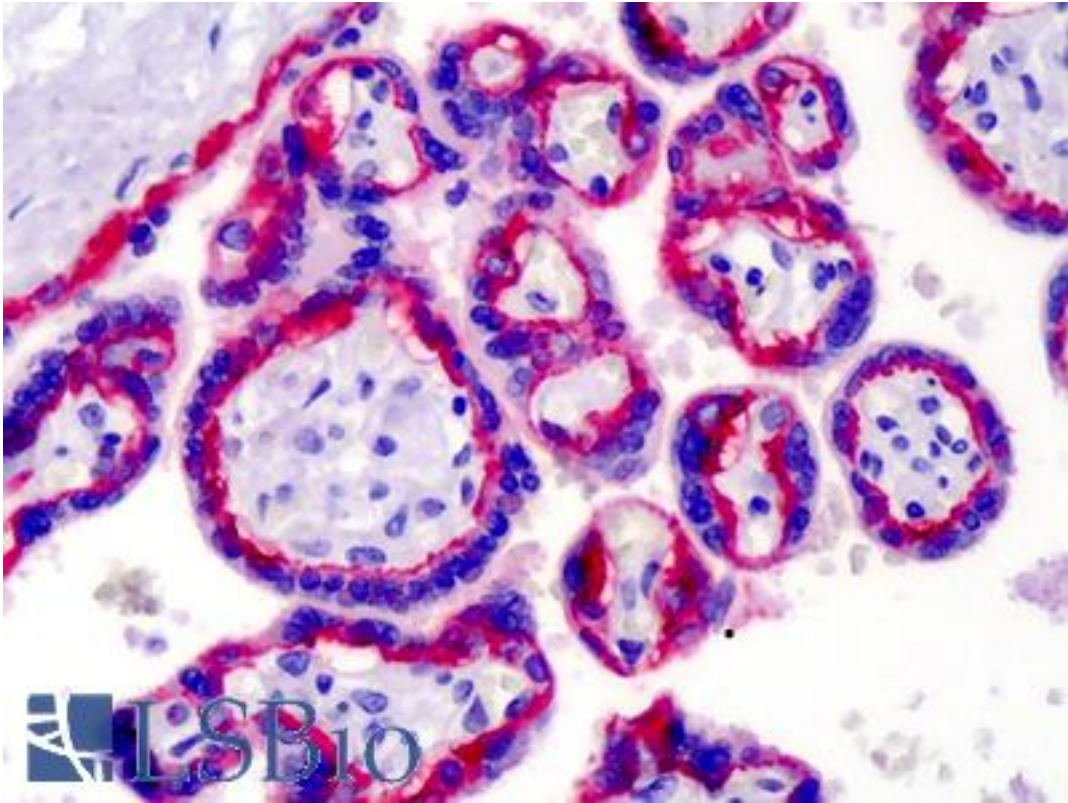


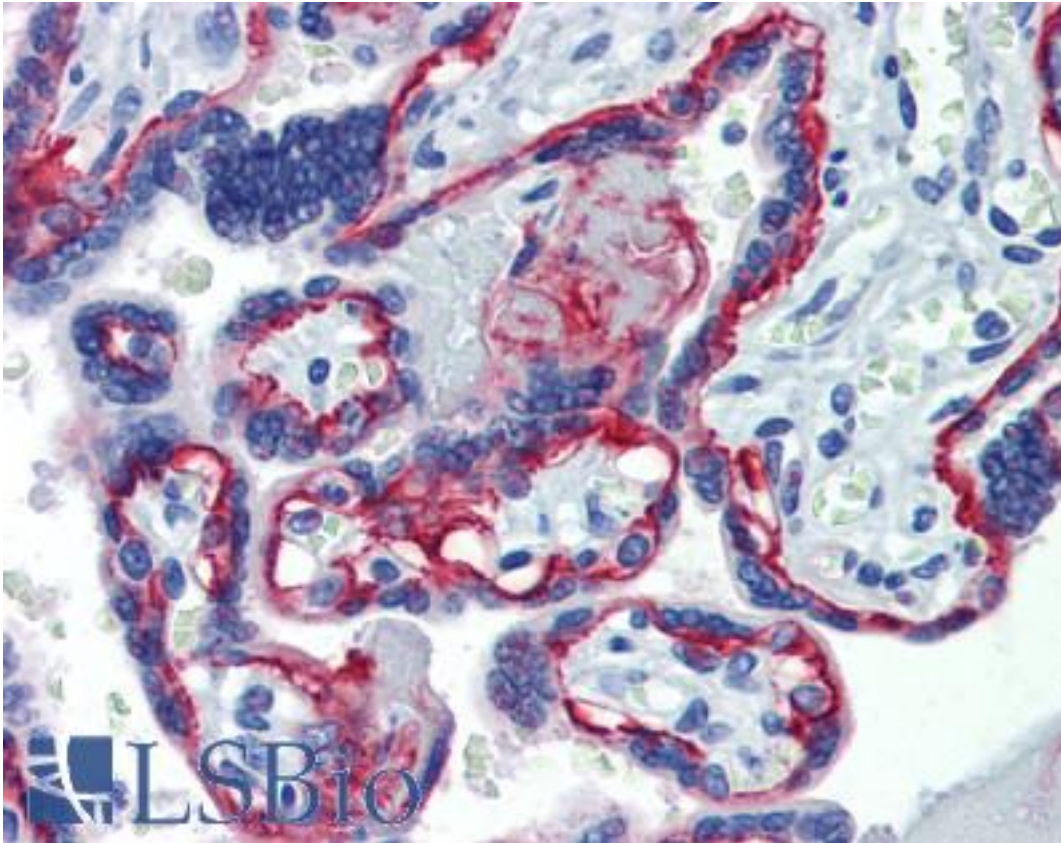
ITGB4 / Integrin Beta 4 Rat anti-Human Monoclonal (439-9B) Antibody - LS-B3778 - LSBio	
CatalogID:	LS-B3778
Validation:	This antibody replaces catalog number LS-C106888. It has been validated for use in the following assays: IHC-P.
Target:	integrin, beta 4 (ITGB4)
Synonyms:	ITGB4 Antibody, CD104 Antibody, Integrin beta-4 Antibody, Integrin Beta 4 Antibody, gp150 Antibody, CD104 antigen Antibody, Integrin beta-4 subunit Antibody, Integrin, beta 4 Antibody
Family / Subfamily:	Integrin / not assigned-Integrin
Host	ITGB4 antibody was produced in Rat
Clonality:	Monoclonal
Isotype:	IgG2b
Clone Name:	439-9B
Immunogen Species:	ITGB4 / Integrin Beta 4 antibody was raised against Human
Immunogen:	ITGB4 / Integrin Beta 4 antibody was raised against human ITGB4
Reactivity:	Human
Purification:	Affinity purified
Presentation:	aqueous buffer, 0.09% sodium azide, may contain carrier protein/stabilizer
Recommended Storage:	Store at 4°C, avoid repeated freeze thaw cycles.
Usage Summary:	Immunohistochemistry: LS-B3778 was validated for use in immunohistochemistry on a panel of 21 formalin-fixed, paraffin-embedded (FFPE) human tissues after heat induced antigen retrieval in pH 6.0 citrate buffer. After incubation with the primary antibody, slides were incubated with biotinylated secondary antibody, followed by alkaline phosphatase-streptavidin and chromogen. The stained slides were evaluated by a pathologist to confirm staining specificity. The optimal working concentration for LS-B3778 was determined to be 20 ug/ml. Tested by flow cytometric analysis of A549 cell line. Antibody can be used at less than or equal to 1 ug per test. A test is defined as the amount (ug) of antibody that will stain a cell sample in a final volume of 100 ul. Cell number should be determined empirically but can range from 10 ⁵ to 10 ⁸ cells/test.
Uses:	IHC - Paraffin (20 µg/ml), IHC - Frozen, Western blot, Flow Cytometry (Optimal dilution to be determined by the researcher)
Size:	100 µg
Concentration:	0.5 mg/ml

Immunohistochemistry Image:



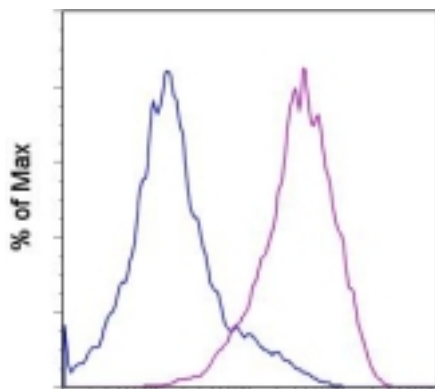
Anti-Integrin Beta 4 antibody IHC of human placenta. Immunohistochemistry of formalin-fixed, paraffin-embedded tissue after heat-induced antigen retrieval. Antibody LS-B3778 concentration 20 ug/ml.

Immunohistochemistry Image:



Anti-Integrin Beta 4 antibody IHC of human placenta. Immunohistochemistry of formalin-fixed, paraffin-embedded tissue after heat-induced antigen retrieval. Antibody LS-B3778 concentration 20 ug/ml.

Flow Cytometry Image:



CD104-Purified/SAV-PE
Staining of the A549 cell line with 0.5 ug of Purified Rat IgG2b Isotype Control (open histogram) or 0.5 ug of Purified anti-human CD104 (439-9B) (colored histogram) followed by Biotin Anti-Rat IgG and Sav-PE. Total viable cells were used for analysis.

Requested From:

Japan

Laboratory Reagent For In Vitro Research Use Only

Not for resale without prior written consent from LifeSpan BioSciences, Inc.

Created on 9/23/2014

© 2014 LifeSpan BioSciences